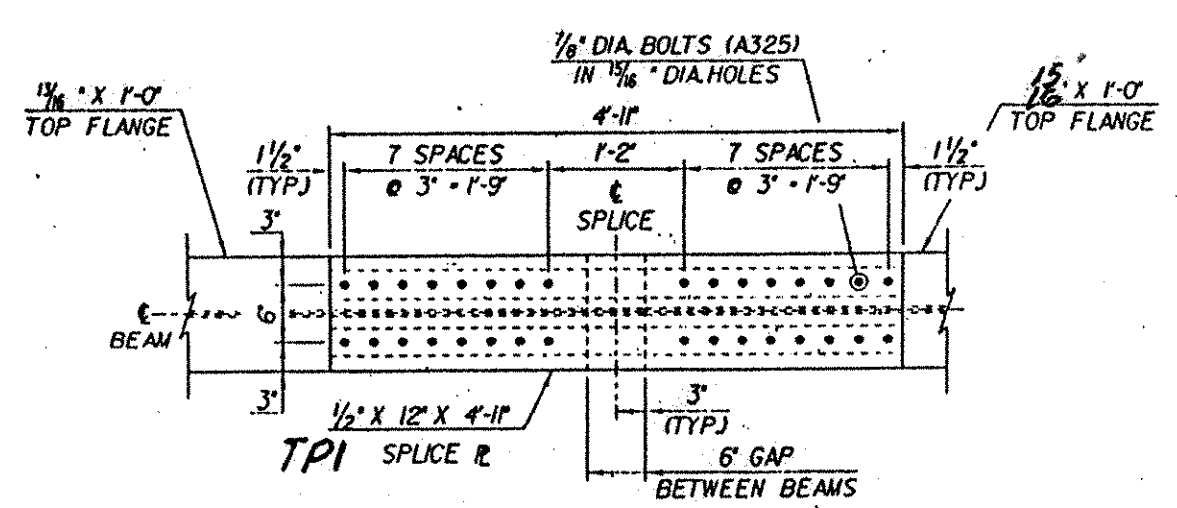
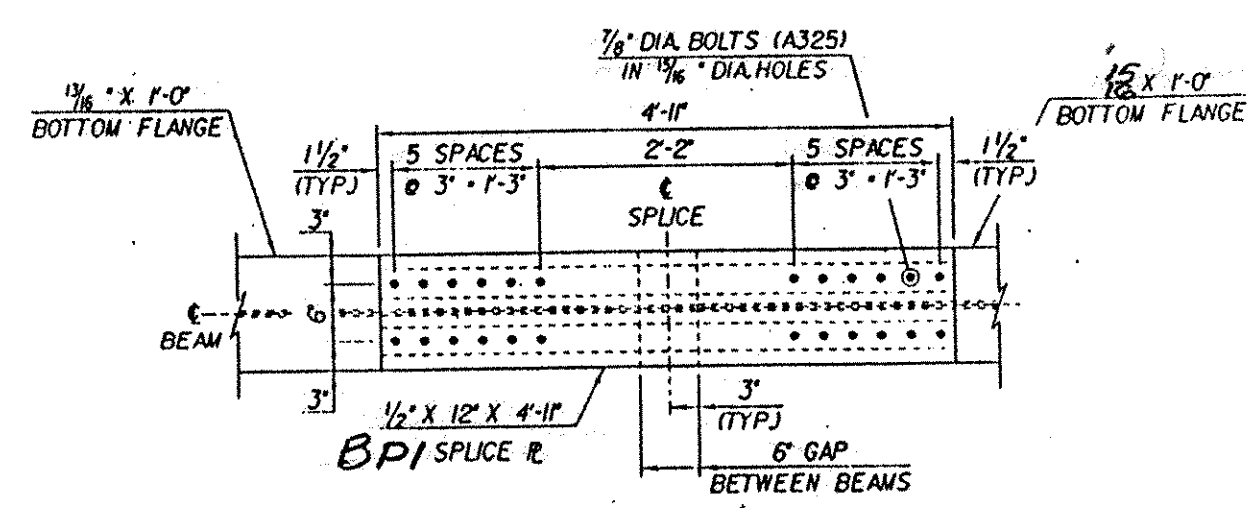


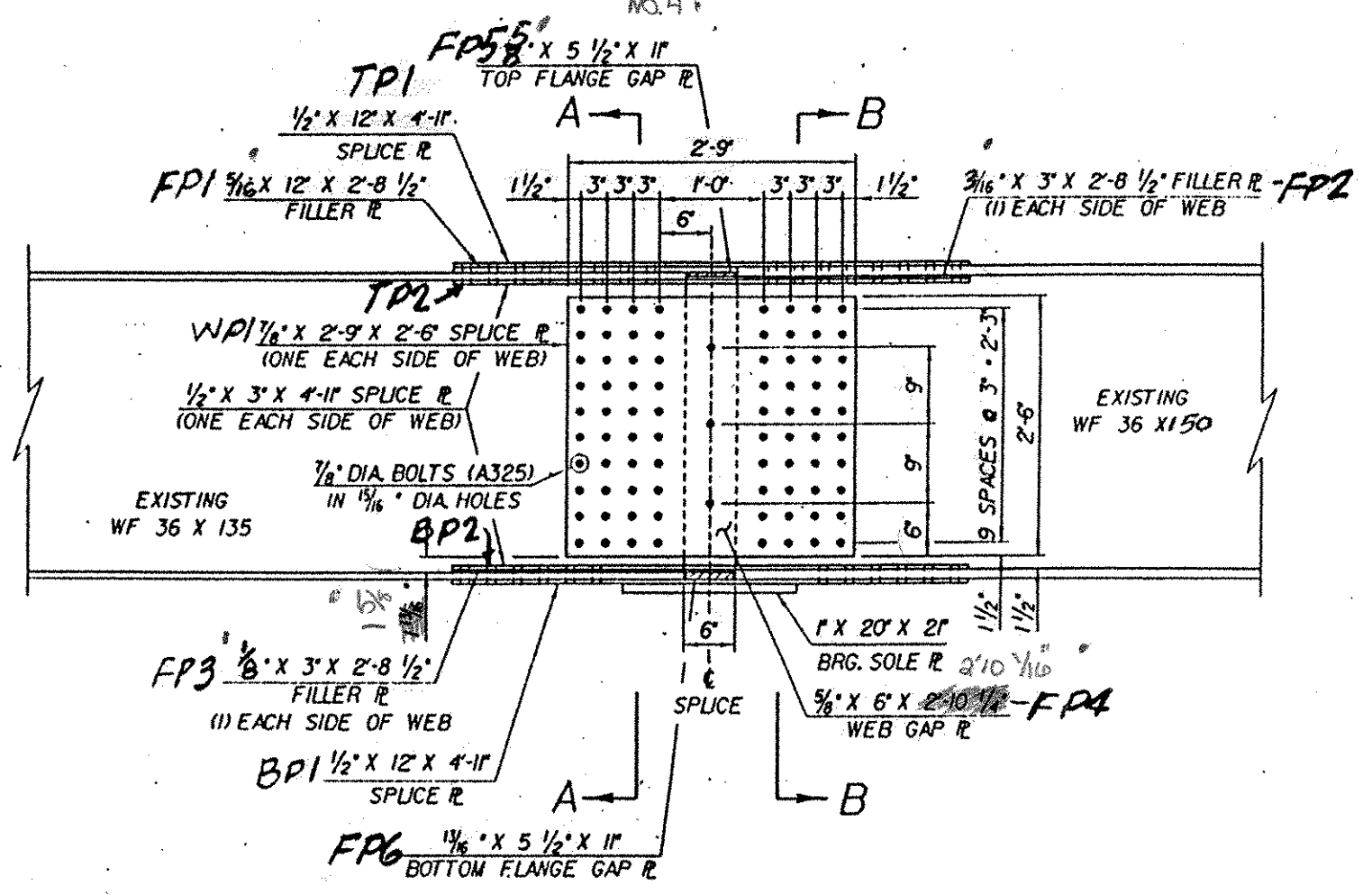
ABM INFO		SHOP BILL				JOB NO.	DRG. NO.
PAGE	LINE	NO.	DESCRIPTION	FT	IN	REMARKS	WEIGHT
	28		R 3/8 x 30	2	9	WPI CVN	
	14		R 1/2 x 12	4	11	TP1 CVN	
	14		DO	4	11	BPI CVN	
	28		R 1/2 x 3	4	11	TP2 CVN	
	28		DO	4	11	BP2 CVN	
	14		R 5/8 x 12	2	8 1/2	FP1	
	28		R 7/8 x 3	2	8 1/2	FP2	
	28		R 8 x 3	2	8 1/2	FP3	
	14		R 5/8 x 6	2	10 1/2	FP4	
	14		R 5/8 x 5 1/2	11		FP5 No FAB	
	14		R 1 1/8 x 5 1/2	11		FP6 No FAB	
		FIELD BOLTS (M16-TYPE 1-GALV.)				W/ NUT & WASH	
			120 B 1/4" H.S. BOLTS		3 3/4	FIELD WEB	
			336 DO		3 3/4	DO BOT. FLG.	
			448 DO		3 3/4	DO TOP FLG.	



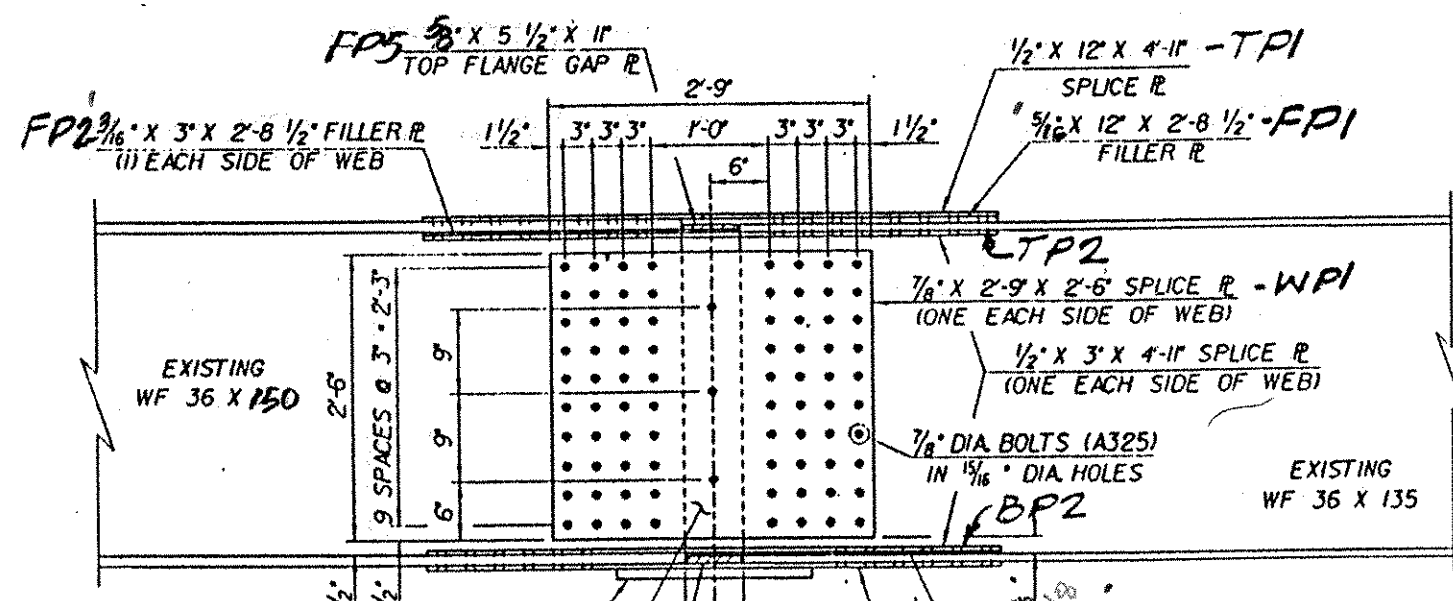
PLAN TOP FLANGE @ PIER NO.3
(PIER NO.2 REVERSE IMAGE)



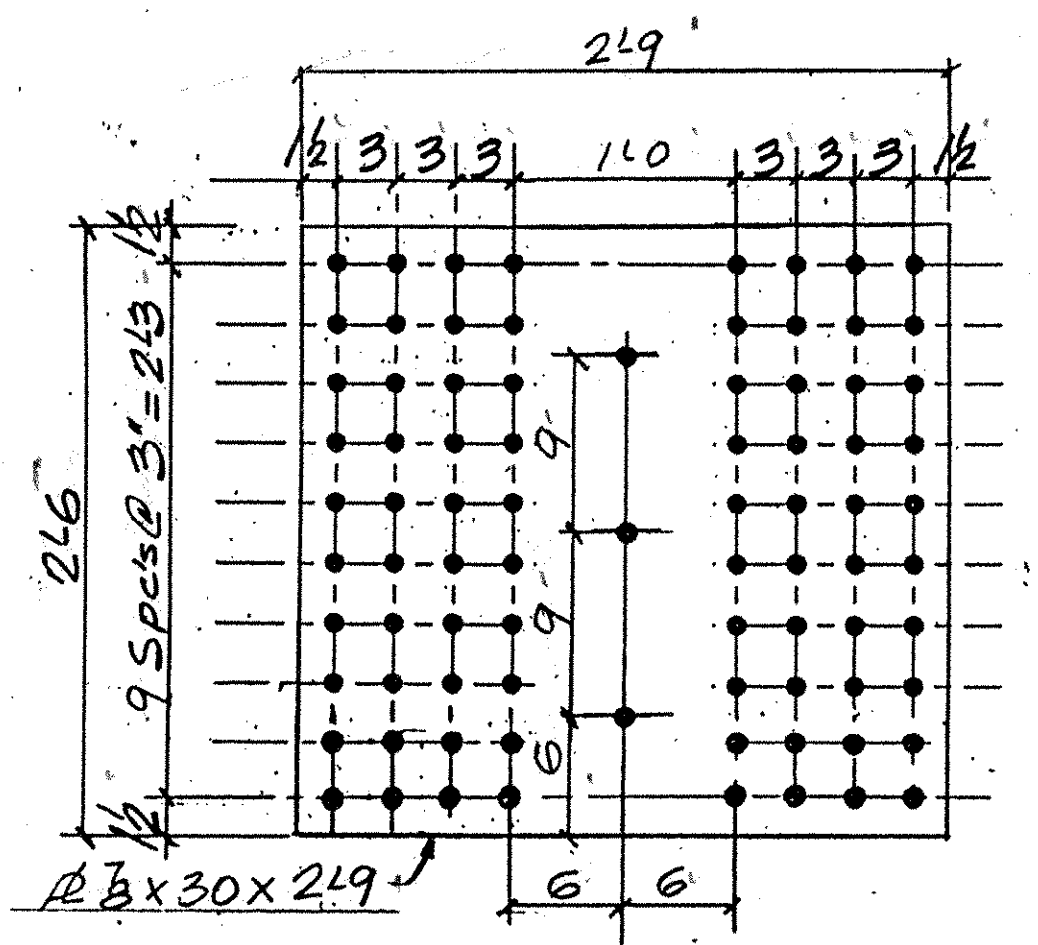
PLAN BOTTOM FLANGE @ PIER NO.3
(PIER NO.2 REVERSE IMAGE)



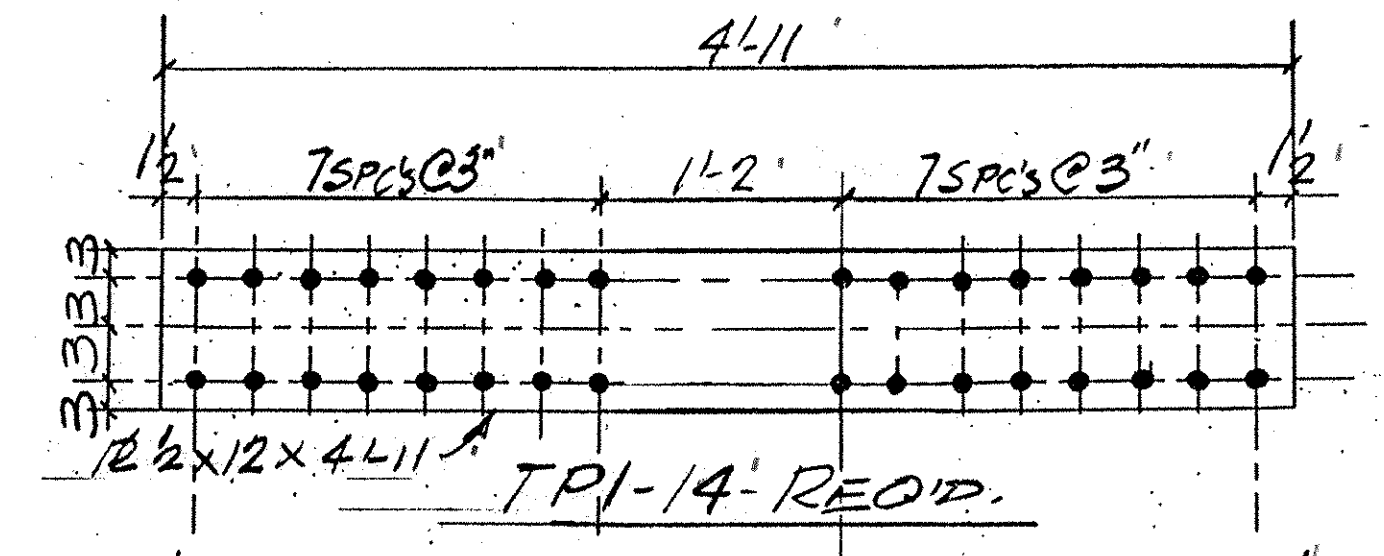
BEAM ELEVATION @ PIER NO.3
SOLE PLATES BY OTHERS



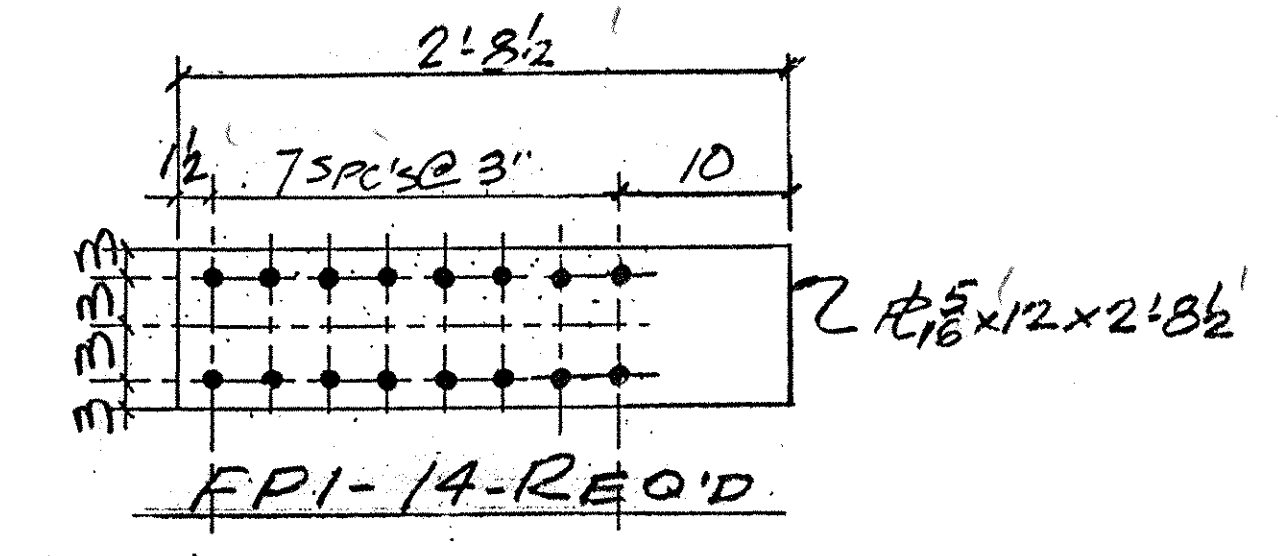
BEAM ELEVATION @ PIER NO.4
SOLE PLATES BY OTHERS



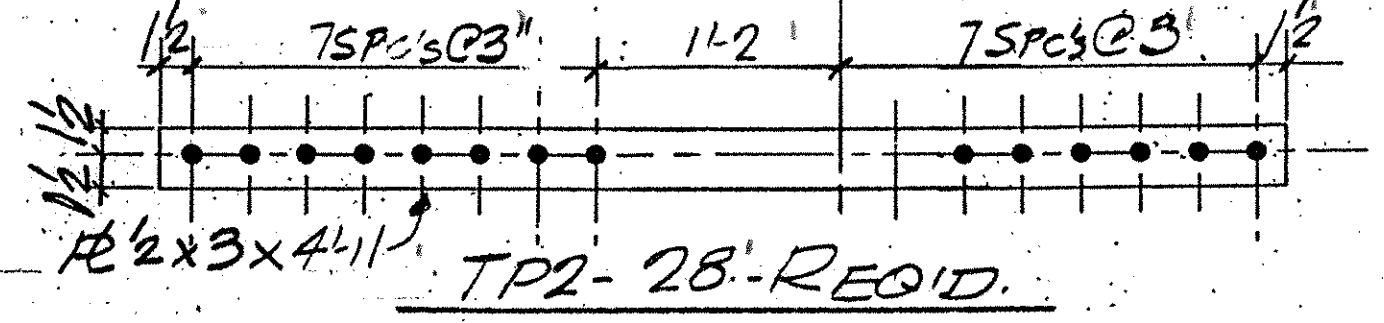
WPI-28-REQ'D.



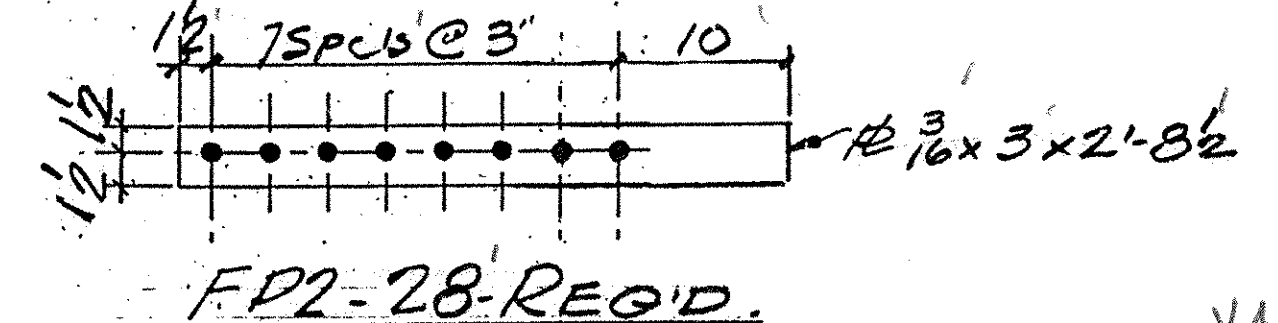
TP1-14-REQ'D.



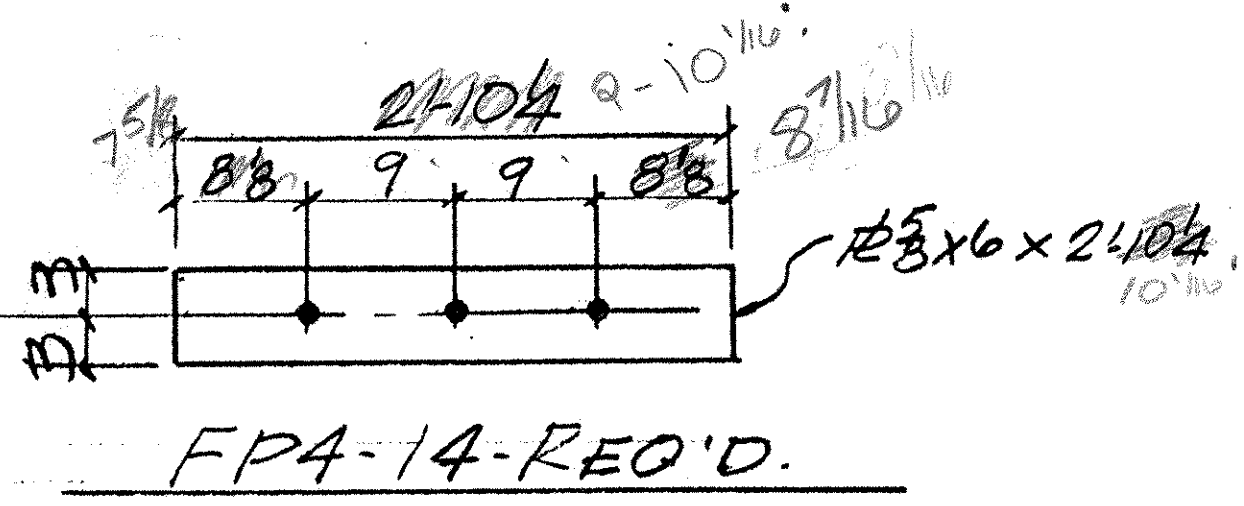
FPI-14-REQ'D.



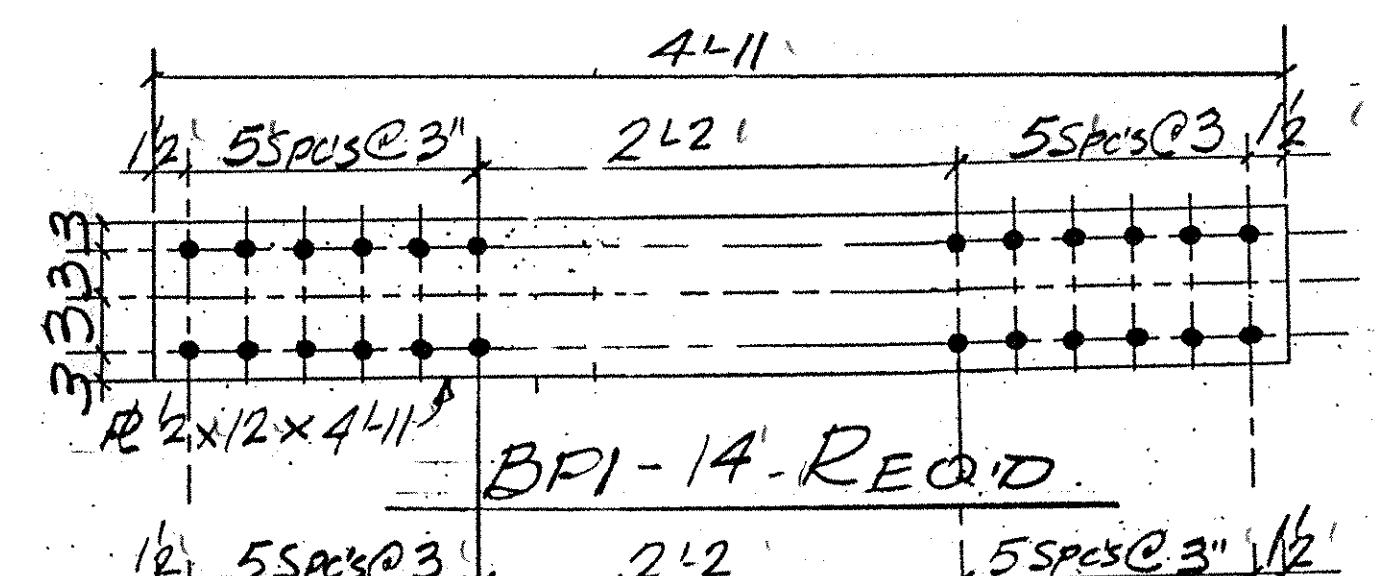
TP2-28-REQ'D.



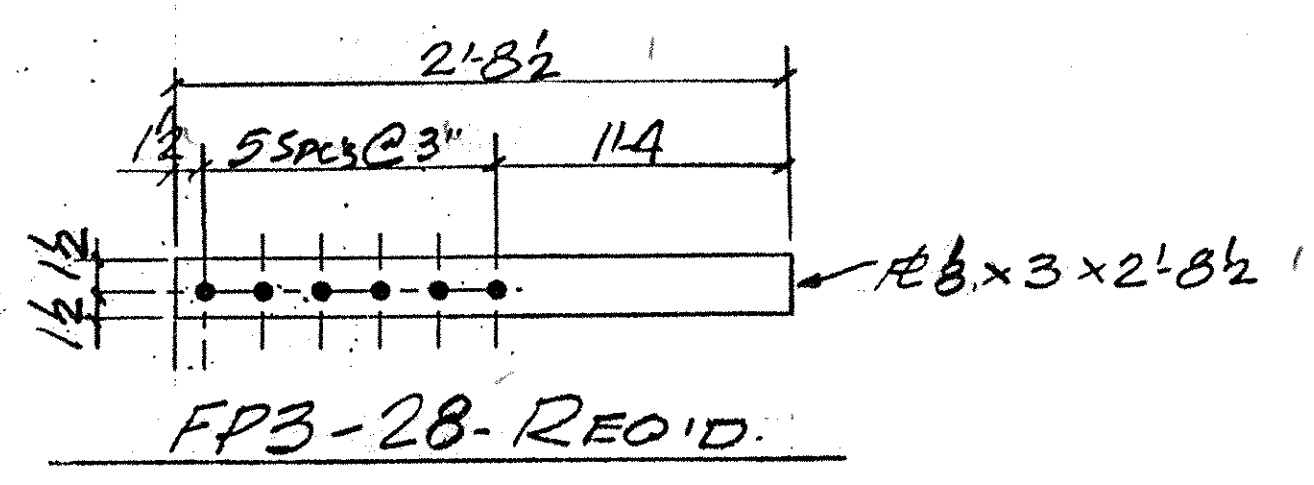
FP2-28-REQ'D.



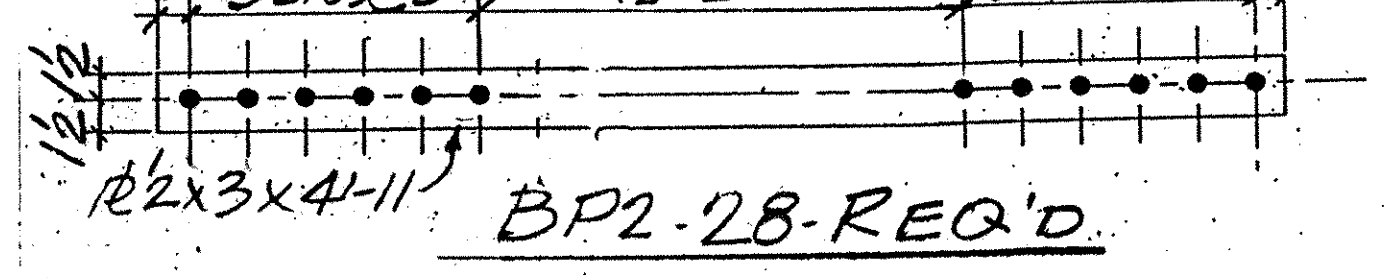
FPA-14-REQ'D.



BPI-14-REQ'D.



FP3-28-REQ'D.



BP2-28-REQ'D.

- 14 FP5 R 5/8 x 5 1/2 x 0-11
- 14 FP6 R 1 1/8 x 5 1/2 x 0-11

No FAB.

SHOP NOTE: SPLICE PLATES PRIME ONLY

V.A.O.T. RECEIVED
 OK'D BY JEL OK'D BY G. Boy
 3.7.01 3.8.01
 MAR 02 2001
 RESUBMIT APPROVED / AS NOTED
 BY mgl DATE 3.22.01

DAY ITEM 506.60

OUT FOR APPROVAL	3.26.01								
OUT FOR APPROVAL									
ISSUED TO SHOP									
FIELD & OFFICE									

REV	REMARKS	DATE	DNW	CHK	APP	Q.A.	NO.	DIA.	LGT	TYPE	WASHER
	PROJECT NO. I-89-3(27) STATE BRIDGE NO. 88N										
	MATERIAL: A572-50 ELECTRODES: - HOLES: 1/8" Φ SHOP BOLTS: -										
	SURFACE PREP. & PAINT: PREP: SSPC-SP10 PRIMER - WATER MC-ZINC										

DESCRIPTION: SPLICE PLATES PIER 234	DRAWN BY	DATE
JOB: BRIDGE 88N	JPF	2-01
I-89 OVER ST. ALBANS SO. STATE HIGHWAY	CHKD BY	EJ
FAIRFAX - FAIRFIELD - ST. ALBANS, VT.	APPROV BY	
	Q.A.	
CUSTOMER: J.A. McDONALD		
CASCO BAY STEEL STRUCTURES, INC.	JOB NO.	DRG. NO.
75 SPRING HILL ROAD SACO, MAINE 04072	132	54
PHONE (207) 282-7360 FAX: (207) 282-1179	435	REV. Δ