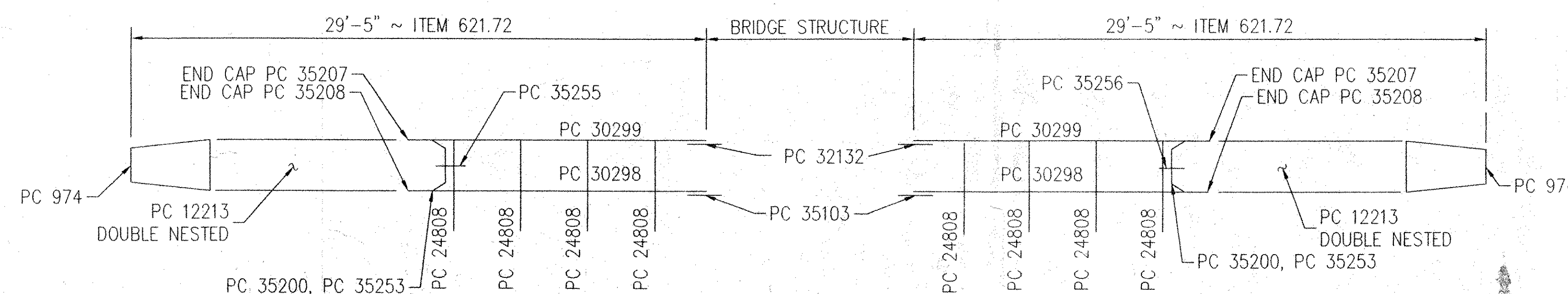


12 GA. T GR 12'-6" C/C
PC 12213 ~ THREE BEAM (M-180)

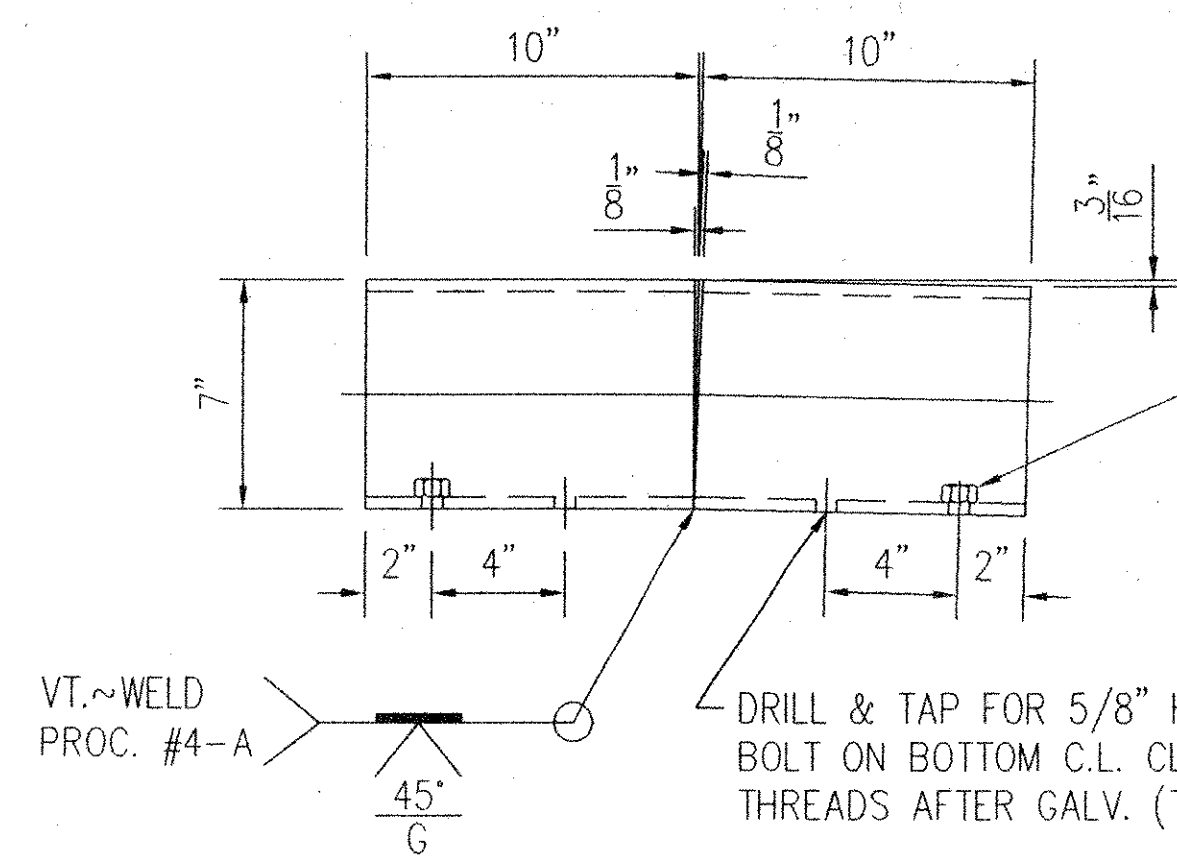
BILL OF MATERIAL				
PRODUCT CODE	QTY	DESCRIPTION	WT. EACH	REMARKS
30299G	16	T.S. 8" x 4" x 5/16" x 9'-8 15/16"	241#	
30298G	16	T.S. 4" x 4" x 1/4" x 9'-8 15/16"	119#	
12213G	32	T12/12'-6/6@1'-6.75:3'-1.5/S	97.4#	
32132A	16	T.S. 7 x 3 x 3/8 x 1'-8"	39#	

NOTES

- All work and materials shall conform to the provisions of Section 525 - Railings of the Standard Specifications for Construction.
- Rail posts shall be set normal to grade.
- Sections of rail bar shall be attached to a minimum of two [2] rail posts and preferably to at least four [4] posts.
- Rail bar expansion joints shall be provided in any rail bay spanning a superstructure expansion joint. Expansion joint width shall be 50mm at C and will be adjusted in the field by the Engineer.
- All parts shall be galvanized after fabrication in accordance with AASHTO M111, except that hardware shall meet the requirements of AASHTO M232. Prior to galvanizing, all corners and edges of steel plates, shapes, etc., shall be ground to a 1.6 mm radius.
- Rail posts anchoring nuts shall be tightened to a snug fit and given an additional 45 degree turn.
- Any bending of rail shall be by shop procedure only.
- Holes in rails for rail bar attachment may be field drilled. Holes shall be coated with an approved zinc-rich paint prior to erection.
- Shop inspection is required.



KEY LAYOUT (VIEWING TRAFFIC FACE) NORTH SIDE
KEY LAYOUT (VIEWING NON TRAFFIC FACE) SOUTH SIDE
BRIDGE NO. 87/88 N. & S.



PC#32132 ~ SPLICE (T.S. 7 x 3 x 3/8" x 1'-8") (A500 GR B)

TACK WELD A GALVANIZED LOCK NUT PC# 3352G AFTER GALVANIZING AT BOTH ENDS OF SPLICE. REPAIR GALV. AS NECESSARY. FOR PROPER ALIGNMENT OF THE LOCK NUT, A BOLT MUST BE PLACED THRU. THE TAPPED HOLE THEN APPLY NUT AND TACK WELD IN PLACE.

NOTE: FIELD DRILL BOTTOM RAIL CONNECTION HOLES IN POSTS. REPAIR GALVANIZING AS NECESSARY.

NOTE: ALL WOOD COMPONENTS, NOT BY TRINITY

V.A.D.T. RECEIVED
C'D BY SEL OK'D BY G.Roy
5-30-01 6.4.01
MAY 24 2001
RESUBMIT APPROVED AS NOTED
BY G.Roy DATE 6.4.01

This drawing and the information shown thereon is the sole property of TRINITY INDUSTRIES, INC. Neither the drawing nor such information is to be used for any purpose other than that for which it was specifically furnished by TRINITY INDUSTRIES, INC., nor is any reproduction authorized without written permission.

GIRARD ENGINEERING DEPT. ISSUED
MAY 17 2001
TRINITY INDUSTRIES, INC.
1170 N. STATE STREET
GIRARD, OHIO 44420

APPROVAL DRAWING

FOR DETAILS SEE 30-102392-D2

REV.	CHK'D	BY	DATE	REMARKS

PAY ITEM 621.72 BRIDGE APPROACH RAIL T2

STATE OF VERMONT AGENCY OF TRANSPORTATION INTERSTATE 89	DRAWN SAR
TOWNS OF FAIRFAX, FAIRLAND & ST. ALBANS COUNTY OF FRANKLIN	CHECKED S.H.
STATE PROJECT NO. M 089-3 (27) BRIDGE NO. 87/88	SCALE N.T.S.
CUSTOMER NORTHLAND SPECIALTIES P.O. No. VERBAL	DATE 4/27/01
TRINITY INDUSTRIES, INC. HIGHWAY SAFETY PRODUCTS 2525 STEMMONS FREEWAY, DALLAS, TX 75207	
ENG. FILE # 30-102392-D1	REV. 0