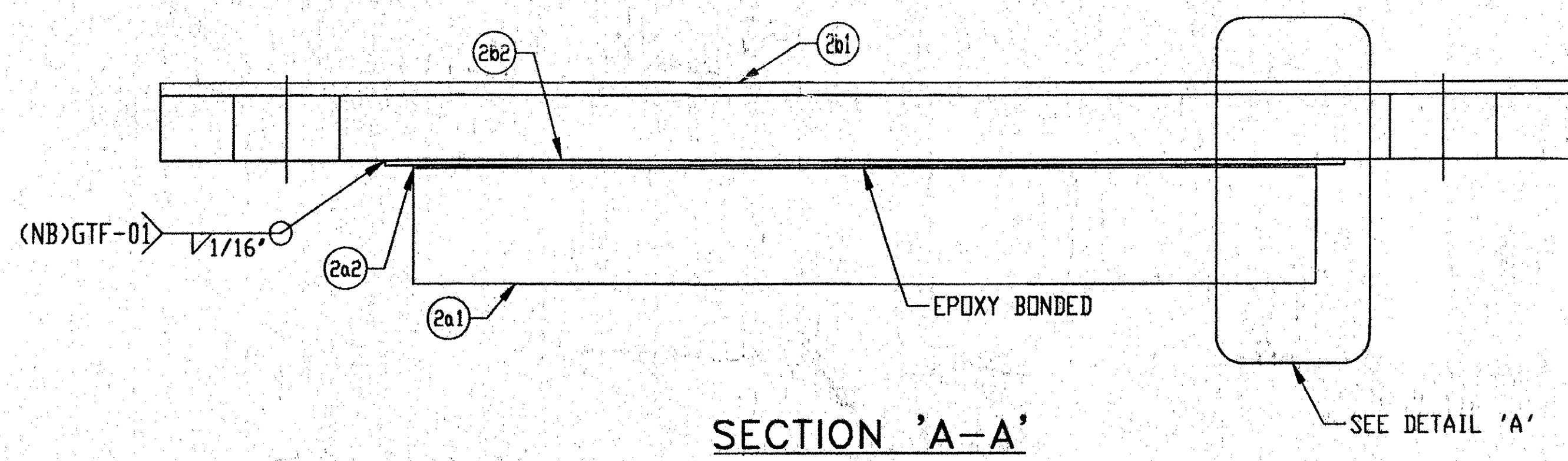
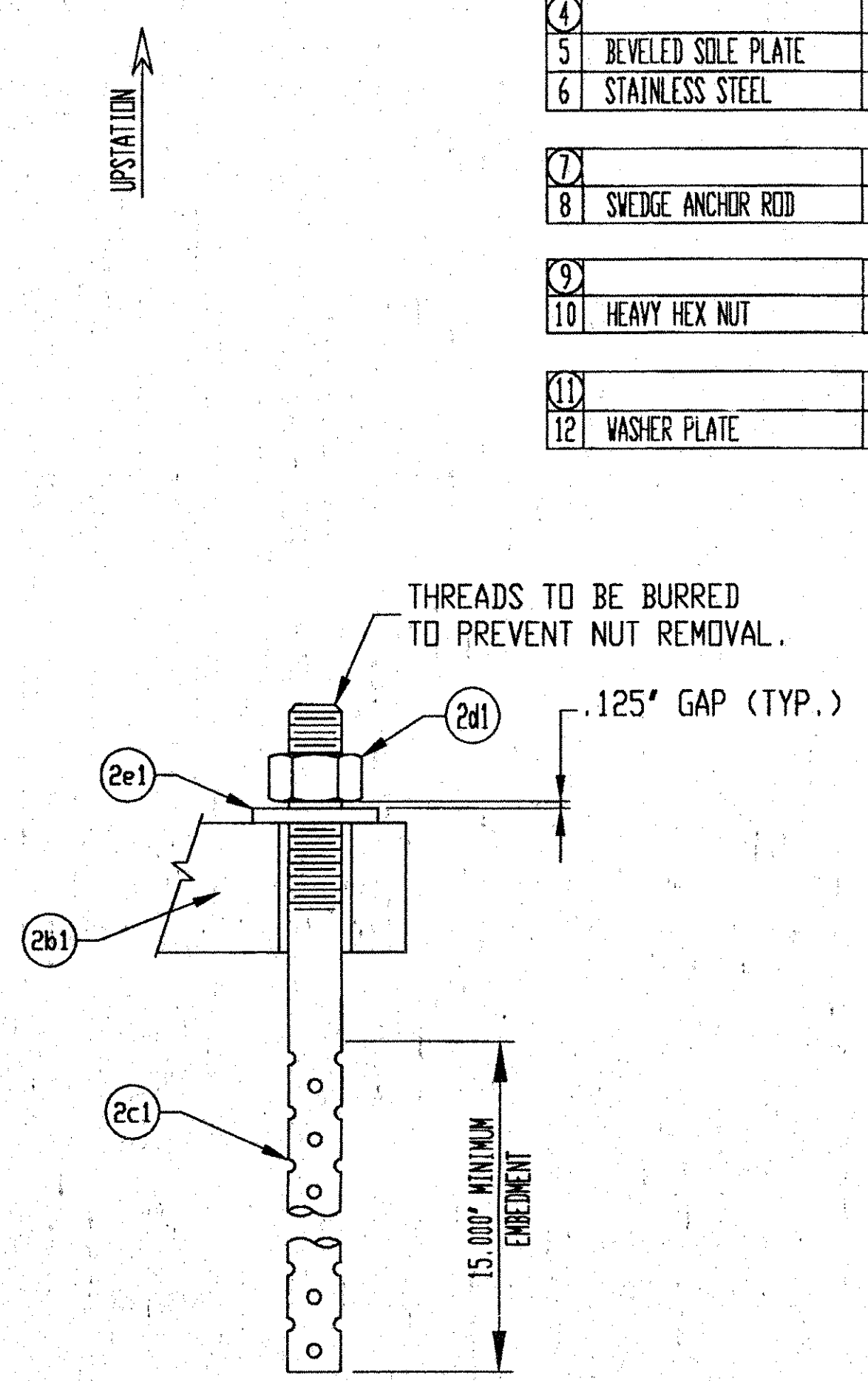


**PLAN VIEW**

MARK: 2201-1104-B  
 (5) REQ'D @ ABUT. 2  
 (5) REQ'D @ ABUT. 4  
 (10) TOTAL REQ'D

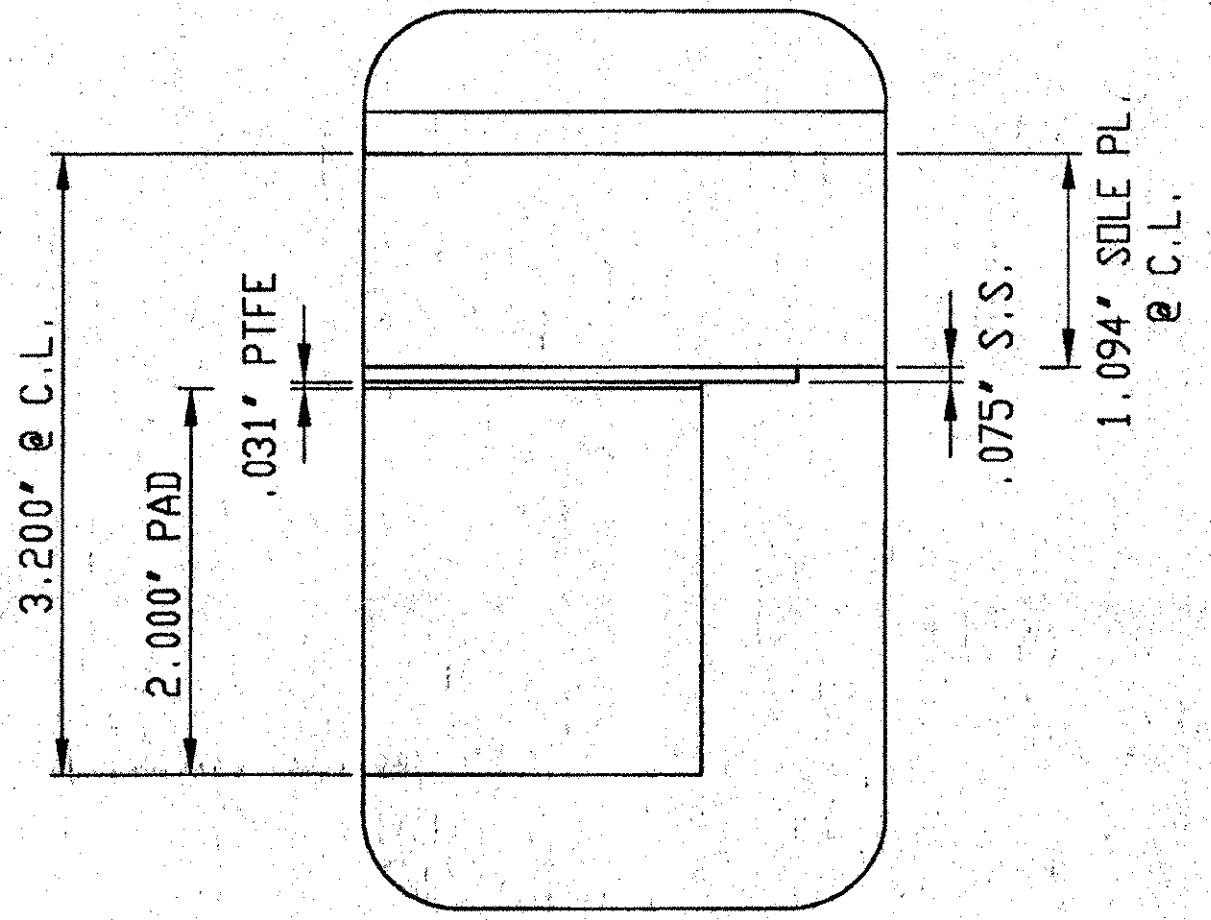


**SECTION 'A-A'**



**ANCHOR ASSEMBLY DETAIL**

ALL MATERIALS AND CONSTRUCTION SHALL CONFORM TO STATE OF VERMONT AGENCY OF TRANSPORTATION STANDARD SPECIFICATIONS FOR CONSTRUCTION DATED 1990, AND ITS LATEST REVISIONS, AND THE AASHTO STANDARD SPECIFICATIONS FOR HIGHWAY BRIDGES, DATED 1996, AND ITS LATEST REVISIONS.



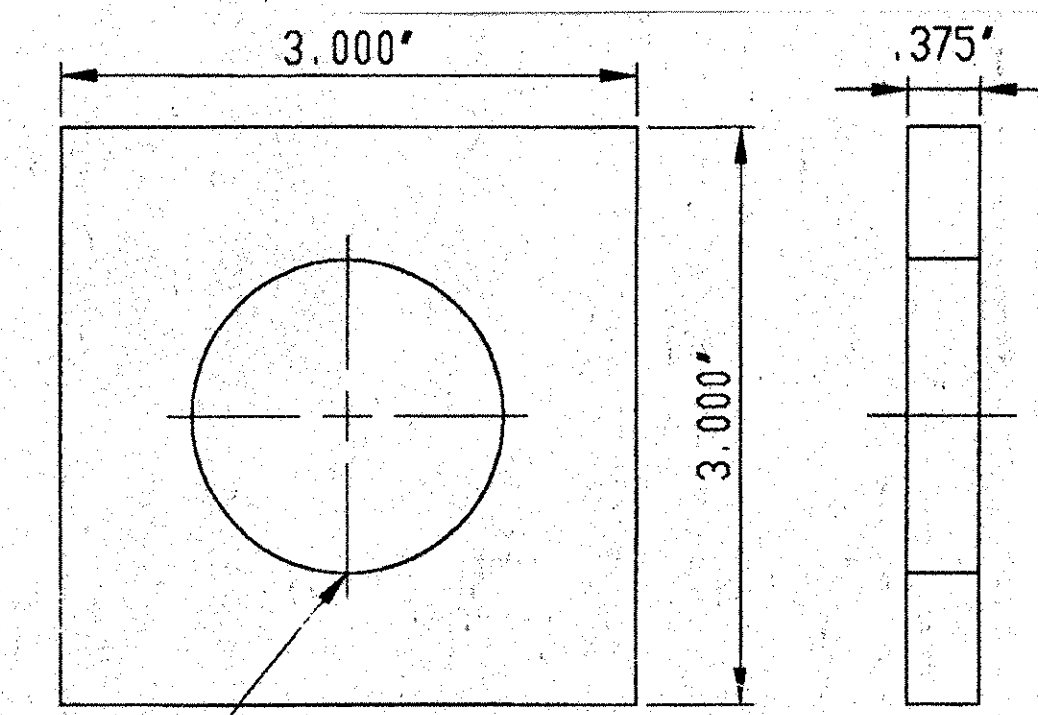
**DETAIL 'A'**

LINE	PART	MARK	NO. REQ'D	DESCRIPTION	REMARKS
1		2A	10	PREFORMED FABRIC PAD	
2	FABRIC PAD	2a1	10	2.000" X 10.000" X 16.000"	VERMONT SPEC. 731.01, AASHTO 18.4.10.1
3	PTFE	2a2	10	.0312" X 10.000" X 16.000"	ASTM D1457, EPOXY BONDED
4		2B	10	SOLE PLATE	
5	BEVELED SOLE PLATE	2b1	10	1.188" X 1.000" X 14.000" X 25.000"	ASTM A709 GR. 36, GALVANIZED A123
6	STAINLESS STEEL	2b2	10	14 GA X 13.500" X 17.00"	ASTM A240, TYPE 304 #8 MIRROR FINISH
7		2C	20	SWEDGE ANCHOR ROD	
8	SWEDGE ANCHOR ROD	2c1	20	1.50" X 21.000" MIN. #14" THREADED, 15" MIN. SWEDGED	ASTM A36 GALVANIZED A153
9		2D	20	HEAVY HEX NUT	
10	HEAVY HEX NUT	2d1	20	1.50"	ASTM A307 GR. DH, GALVANIZED A153
11		2E	20	WASHER PLATE	
12	WASHER PLATE	2e1	20	.375" X 3.000" X 3.000" #1.625" HOLE	ASTM A36, GALVANIZED A123

**GENERAL NOTES:**

- PAD AND MATERIALS SHALL CONFORM TO VERMONT DEPARTMENT OF TRANSPORTATION - DIVISION OF HIGHWAYS - SPECIFICATIONS FOR 531 & 731. *AG 6-2-01*
- THESE SHOP DRAWINGS WERE PREPARED IN ACCORDANCE WITH THE CONTRACT PLANS AND SPECIFICATIONS. THE D.S. BROWN COMPANY DOES NOT ACCEPT LIABILITY FOR THE DESIGN OF THE PRODUCTS DETAILED IN THESE SHOP DRAWINGS.
- THE BEARINGS SHALL BE SUBJECTED TO RANDOM IN-HOUSE ELASTOMER TESTING AND RANDOM IN-HOUSE PROOF LOAD TESTING IN ACCORDANCE WITH AASHTO DIVISION I, SECTION 14 (METHOD "A") AND AASHTO DIVISION II, SECTION 18.
- THE D.S. BROWN COMPANY IS TO ONLY SUPPLY THE PARTS SHOWN ON THIS DRAWING.
- STAINLESS STEEL SHEET TO BE BONDED AND THEN WELDED. STAINLESS STEEL SLIDING SURFACE IN CONTACT WITH PTFE SHALL HAVE A NO. 8 MIRROR FINISH AND ALL OTHERS SHALL HAVE A 2B FINISH.

SURFACES TO BE GALVANIZED OR METALIZED. PRIOR TO GALVANIZING OR METALIZING, ALL CORNERS AND EDGES OF STEEL PLATES, SHAPES, ETC., SHALL BE GROUNDED TO A 1/16 INCH RADIUS.



**WASHER PLATE DETAIL**

V.A.O.T. RECEIVED  
 OK'D BY *myl* OK'D BY *myl*  
 2.26.01  
 FEB 26 2001  
 RESUBMIT APPROVED *VASANT*  
 BY *myl* DATE 3-2-01

D.S. BROWN 2201-1106-2, 10 OF 10 SHEET 2 OF 7

**D.S. BROWN**

F.A.P. NO.: -  
 STATE PROJ. NO.: IM-089-3(27)  
 BRIDGE NO.: 87 N & S  
 DESIGNER: VT AGENCY OF TRANSPORTATION  
 CONTRACTOR: J.A. MCDONALD

THE D.S. BROWN COMPANY, INC.  
 NORTH BALTIMORE, OHIO 45872-0158 U.S.A.

SCALE: N/A  
 DATE: 1/19/01  
 1-89 OVER VT 104  
 FRANKLIN COUNTY  
 PREFORMED FABRIC BEARING

DATE SYM REVISION DR CK

419 VERMONT  
 DRAWING NUMBER 2201-1106-02