

PROPERTY LINE FENCE W/STEEL POSTS, MOD. Item 583-II  
S.B. 3332+00-3348+00 Lt.  
N.B. 3332+00-3348+00 Rt.

\*THREE CABLE GUARD RAIL W/STEEL POSTS, ITEM 542  
N.B. 3332+00-3348+00 Lt.  
S.D. 3332+00-3348+00 Lt.

\*STD STEEL BEAM GUARD RAIL W/LIGHT STEEL POSTS, ITEM 545-AE (12'6" dk)  
S.D. 3333+36-3335+40 Rt.  
N.B. 3333+36-3335+40 Lt.

STONE FILL FOR SLOPE PROTECTION ITEM 512  
S.B. 3334+16-3334+36 Rt.  
S.D. 3334+44-3334+64 Rt.  
N.B. 3335+20-3335+50 Lt.

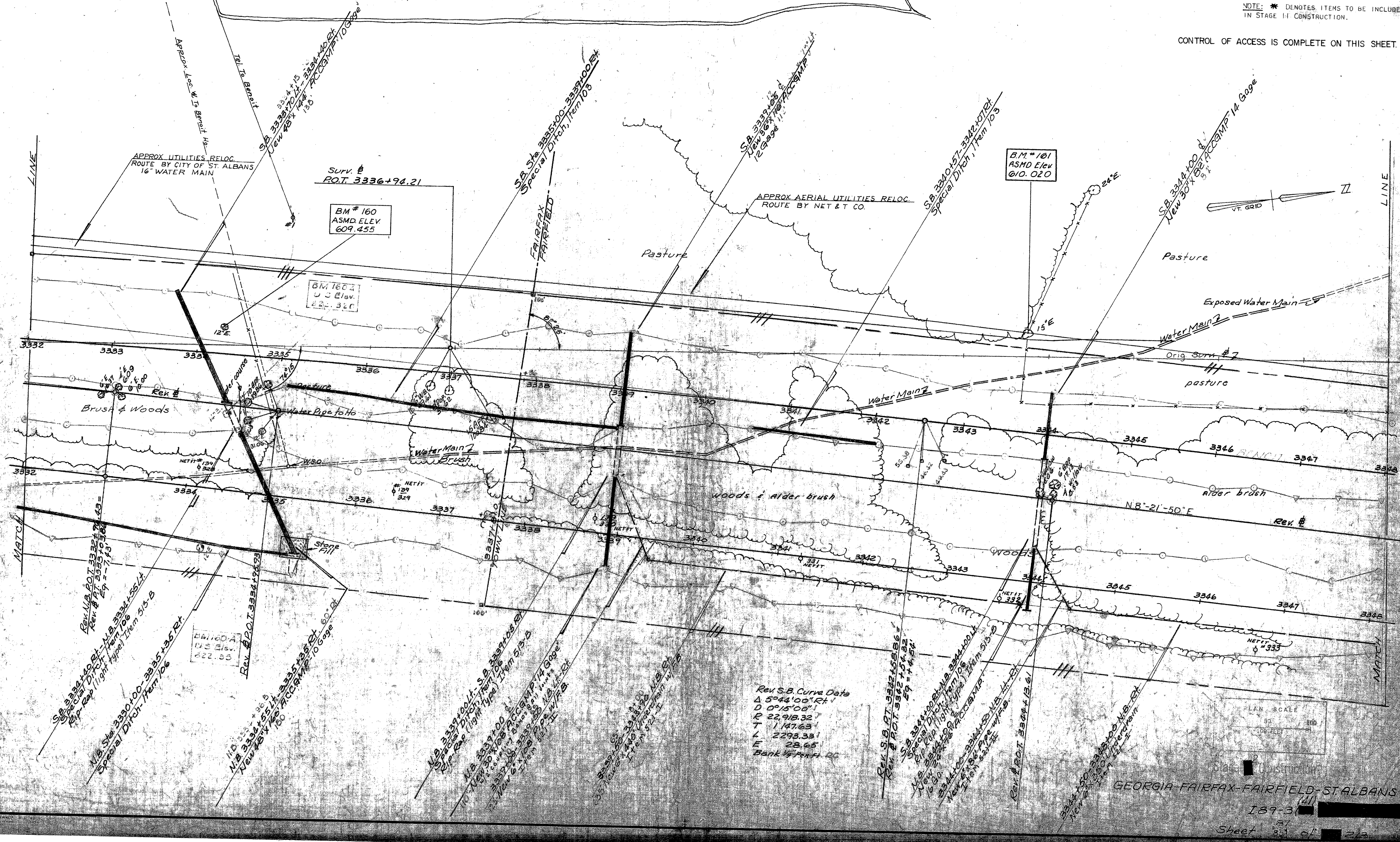
RIPRAP (light type) Item 513-B  
S.B. 3334+36-3334+44 Rt.  
S.D. 3339+00-3339+10 Rt.

INDIVIDUAL WATER SOURCES  
BEAVER & FARM POND S.B.L. 3334 - 375± LT  
BEAVER & FARM POND S.B.L. 3337 - 410± LT  
BEAVER & FARM POND S.B.L. 3340 - 440± LT

NOTE: \* DENOTES ITEMS TO BE INCLUDED IN STAGE II CONSTRUCTION.

CONTROL OF ACCESS IS COMPLETE ON THIS SHEET.

Beaver & Farm Pond (Approx. 300'x600')



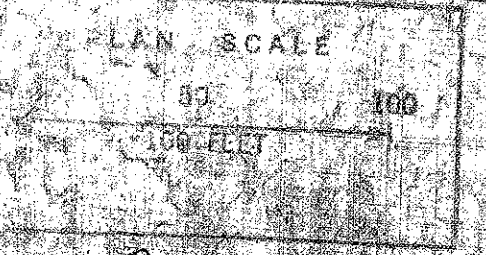
B.M. # 161  
ASMD Elev  
610.020

BM # 160  
ASMD ELEV  
609.455

BM # 162  
U.S. Elev.  
222.318

B.M. # 160-A  
U.S. Elev.  
222.33

Rev S.B. Curve Data  
Δ 5°44'00" Rt.  
D 0°15'00" L  
R 22918.32  
T 1147.63  
L 2292.33  
E 28.65  
Bank V.P. 11.00



GEORGIA-FAIRFAX-FAIRFIELD-STALBANS

189-31

Sheet 35 of 213

S7A 3352 = MM 11,99