

DIPRAP (light type) Item 513-B
S.B. 3329+51 - 3329+59 Rt.

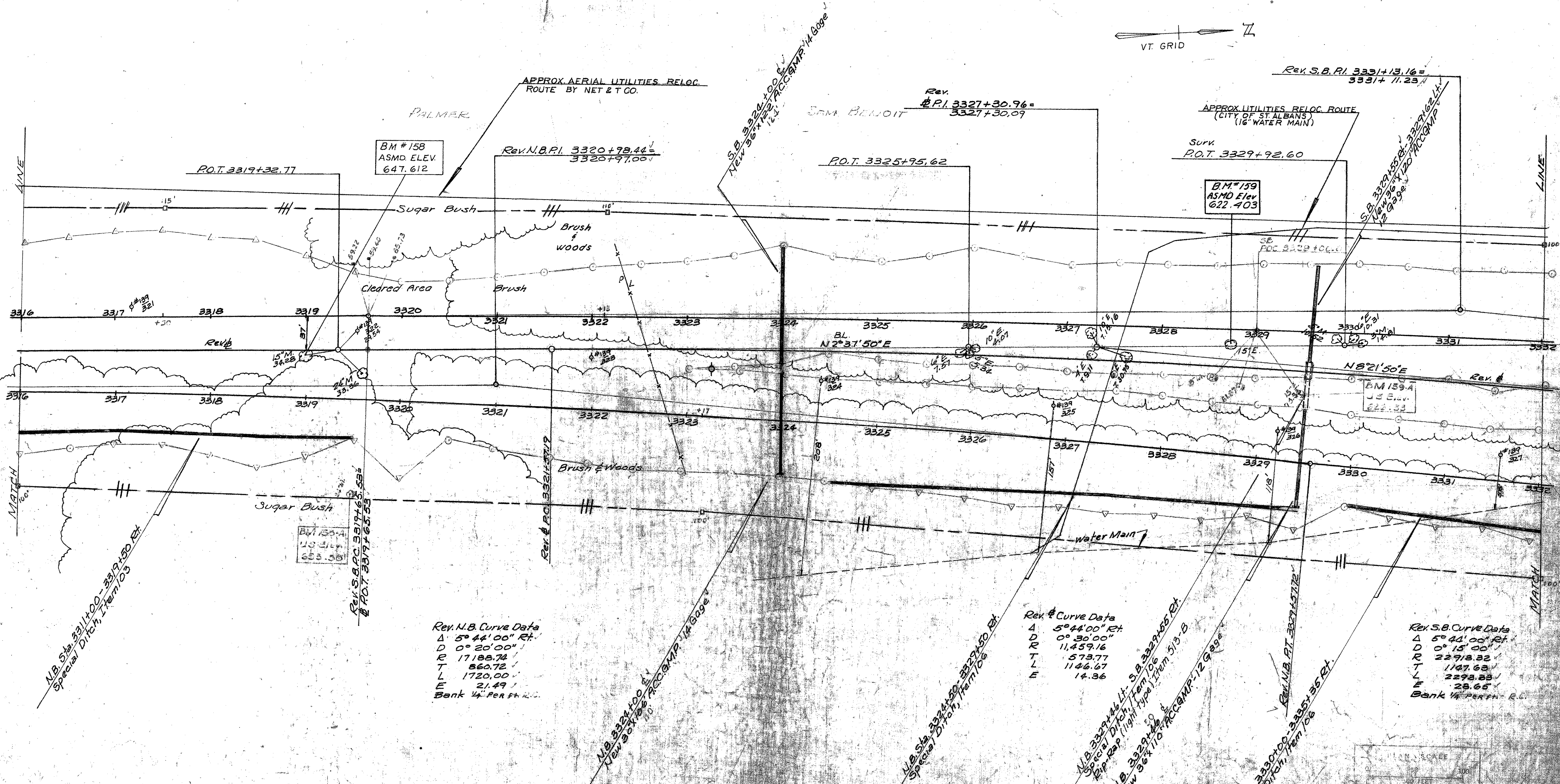
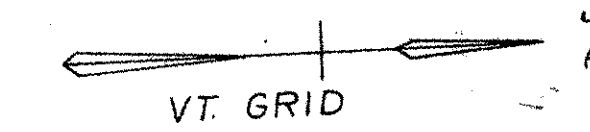
* THREE CABLE GUARD RAIL
W/STEEL POSTS, ITEM 542
N.B. 3321+02 - 3332+00 Lt.
S.D. 3325+05 - 3332+00 Lt.

PROPERTY LINE FENCE W/STEEL POSTS,
MOD. Item 583 II
S.B. 3316+00 - 3332+00 Lt.
N.B. 3316+00 - 3332+00 Rt.

INDIVIDUAL WATER SOURCES
POND S.B.L. 3317± - 1100'± Lt.

NOTE: * DENOTES ITEMS TO BE INCLUDED
IN STAGE II CONSTRUCTION.

CONTROL OF ACCESS IS COMPLETE ON THIS SHEET.

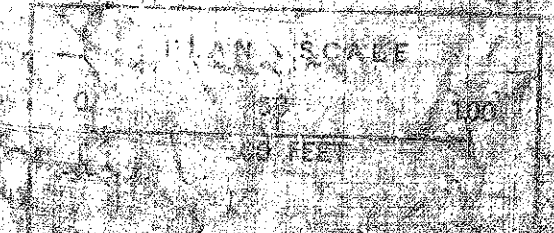


DATE	1/16/69
BY	Spaulding
REVISION	
NO.	1
DESCRIPTION	AS BUILT
NO.	1
DESCRIPTION	AS BUILT
NO.	1
DESCRIPTION	AS BUILT

Rev. N.B. Curve Data
 Δ 5° 44' 00" Rt.
 D 0° 20' 00"
 R 17188.74
 T 860.72
 L 1720.00
 E 21.49
 Bank 1/4" Per ft. R.L.

Rev. S.B. Curve Data
 Δ 5° 44' 00" Rt.
 D 0° 15' 00"
 R 22918.82
 T 1147.62
 L 2298.23
 E 28.65
 Bank 1/4" Per ft. R.L.

Rev. S.B. Curve Data
 Δ 5° 44' 00" Rt.
 D 0° 15' 00"
 R 22918.82
 T 1147.62
 L 2298.23
 E 28.65
 Bank 1/4" Per ft. R.L.



GEORGIA-FAIRFAX-FAIRFIELD-ST. ALBANS

189-3 (4)
Sheet 86 of 213

STA. 3316 = MM 111.69