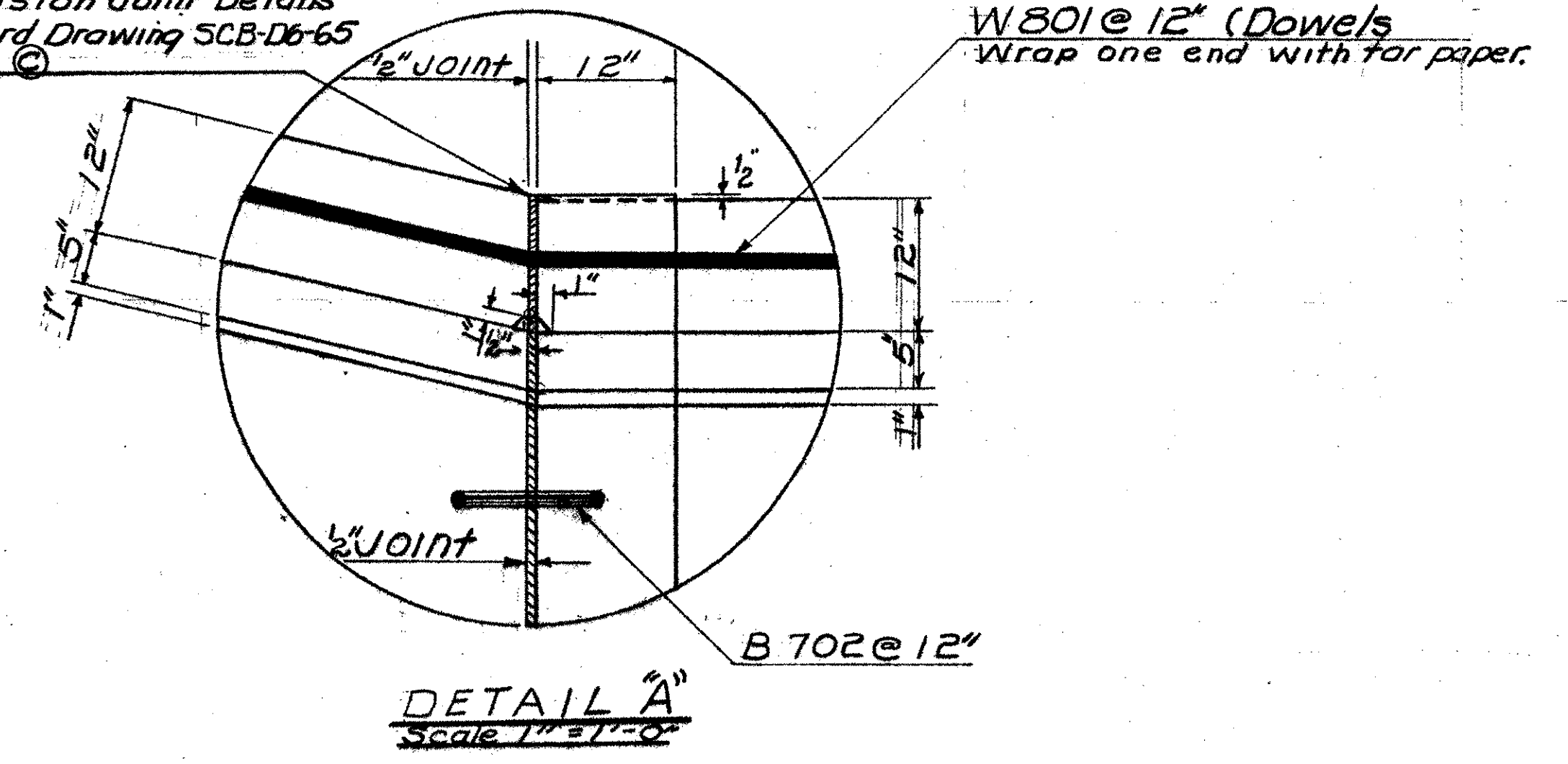


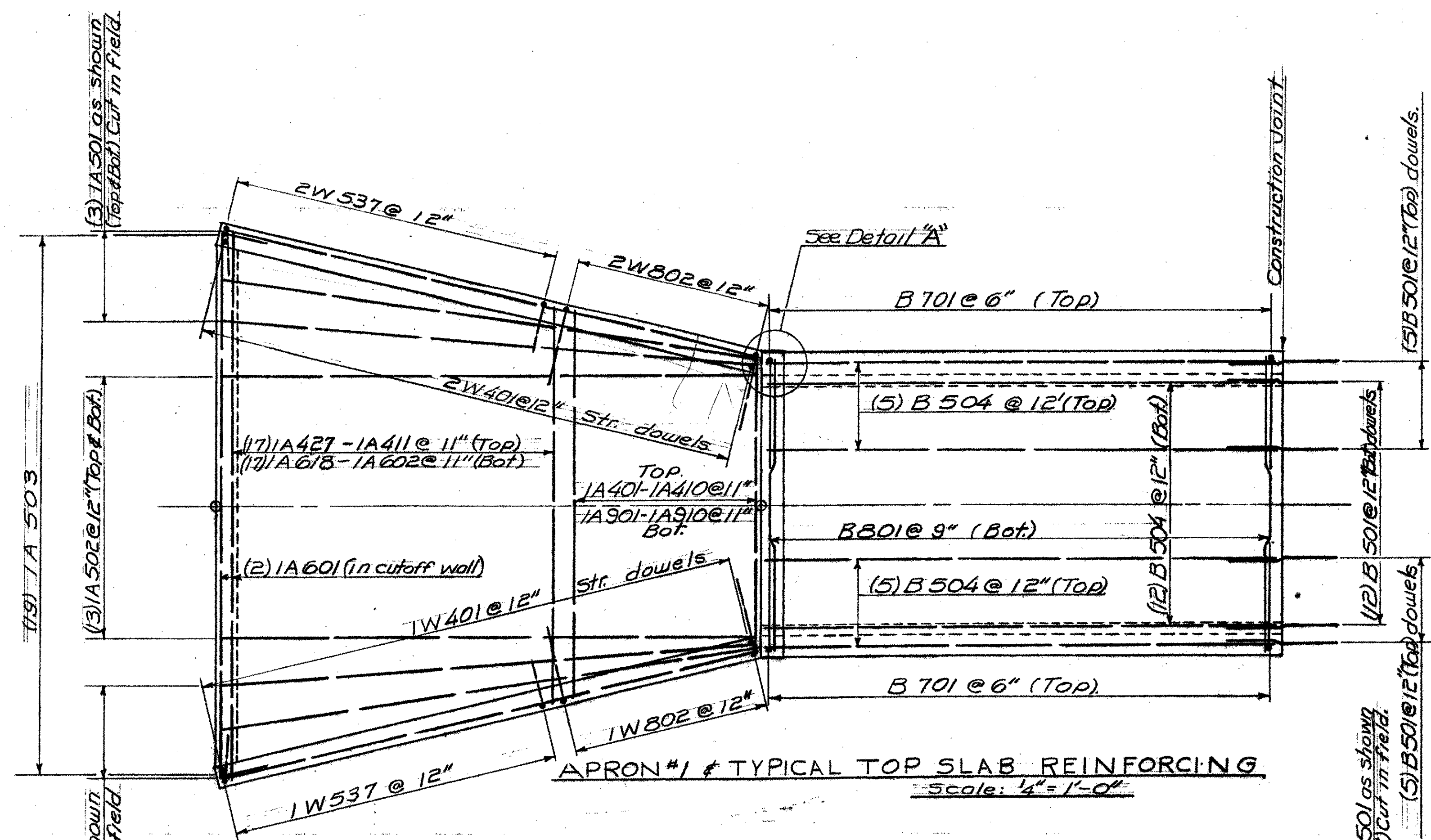
For Expansion Joint Details
See Standard Drawing SCB-D6-65
Detail (B) & (C)



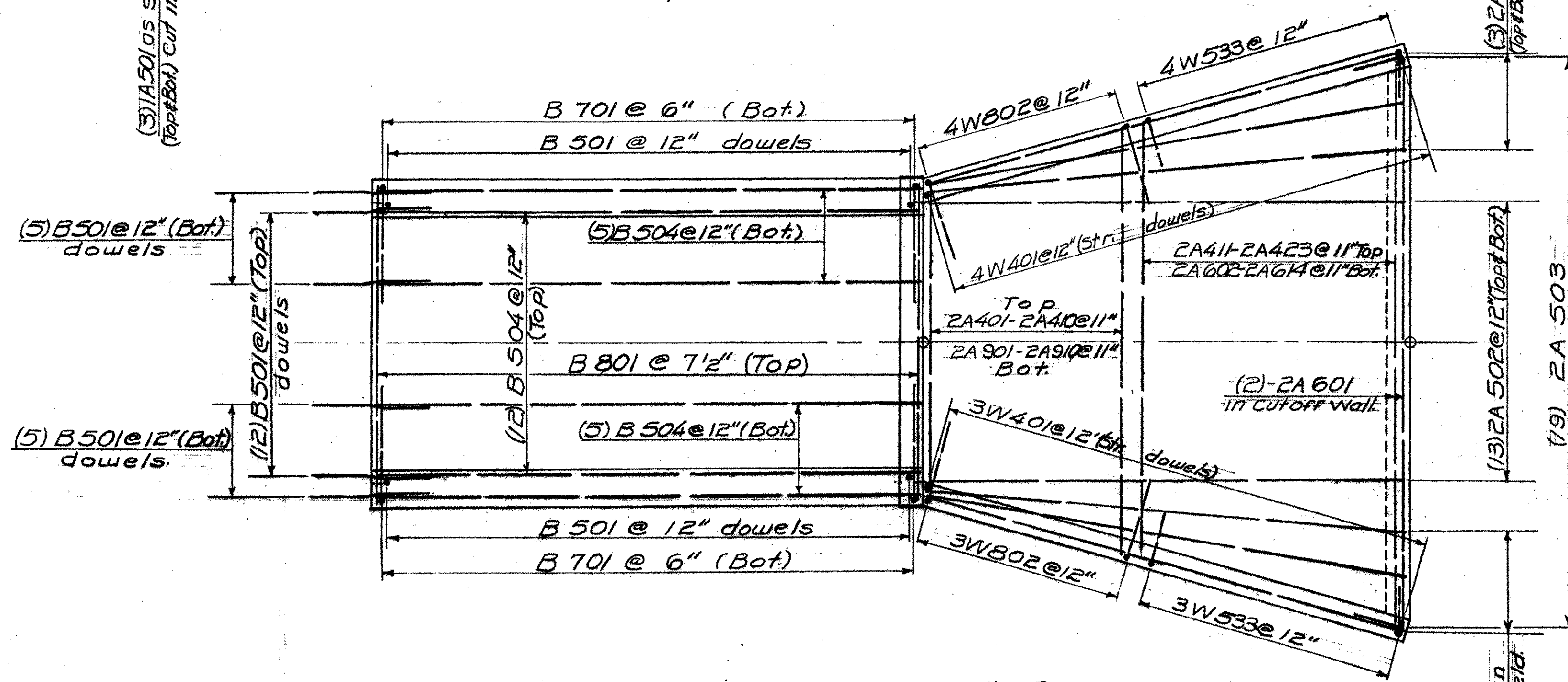
GENERAL NOTES:

- ① For general notes see Standard Drawing SCB-D1-65
- ② Barrel is to be constructed in alternate segments with limits being the joints as indicated.
- ③ Roadway surface is to be screeded, floated, and broomed.
- ④ All reinforcing steel is to have a clear cover of 2" unless otherwise noted.
- ⑤ All exposed edges of concrete shall be chamfered 1"x1" unless otherwise noted.
- ⑥ For Expansion Joint Details see sheets BR301 & BR302 & Standard Drawing SB-21-56 Detail (C).
- ⑦ For typical section of farmpass roadway see x-section sheet NP, BR-304.
- ⑧ Maintain a minimum of 1'-6" of cover over the 18" ACCGMP @ Stations 3+60 & 5+90.
- ⑨ All quantities from Fin. Grade to a depth of 4'-0" below Fin. Grade on the Interstate are Roadway Quantities.

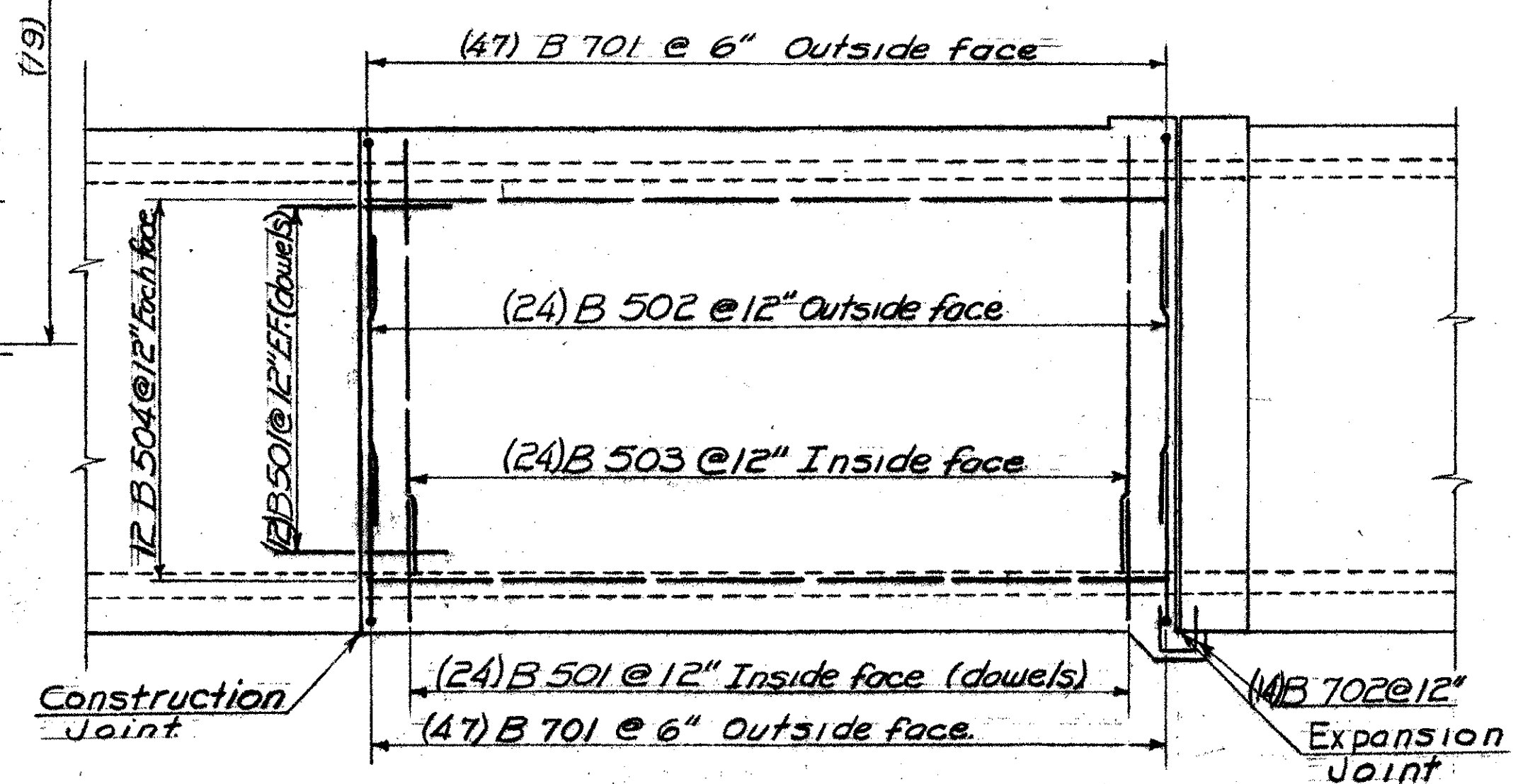
BRIDGE SHEET BR507
REFERENCE SHEET 2 OF 3
SHEET 251 OF 370



APRON #1 & TYPICAL TOP SLAB REINFORCING
Scale: 1/4" = 1'-0"



TYPICAL BOTTOM SLAB & APRON #2 REINFORCING
Scale: 1/4" = 1'-0"



TYPICAL WALL REINFORCING
Scale: 1/4" = 1'-0"

Stage 1 Construction
CONTRACT 2

STATE OF VERMONT
DEPARTMENT OF HIGHWAYS

GEORGIA - FAIRFAX
TOWN OF FAIRFIELD - ST ALBANS

ROUTE No. I 89 LOG STA.

APRON & BARREL DETAILS

SCALE AS NOTED

SURVEYED BY Gamsby, Millette & Spaulding
DRAWN BY G.E.H. CHECKED BY R.P.G.

S4: B6 PROJECT No. I 89-3(35) Cont # 2
SHEET 216 OF 467