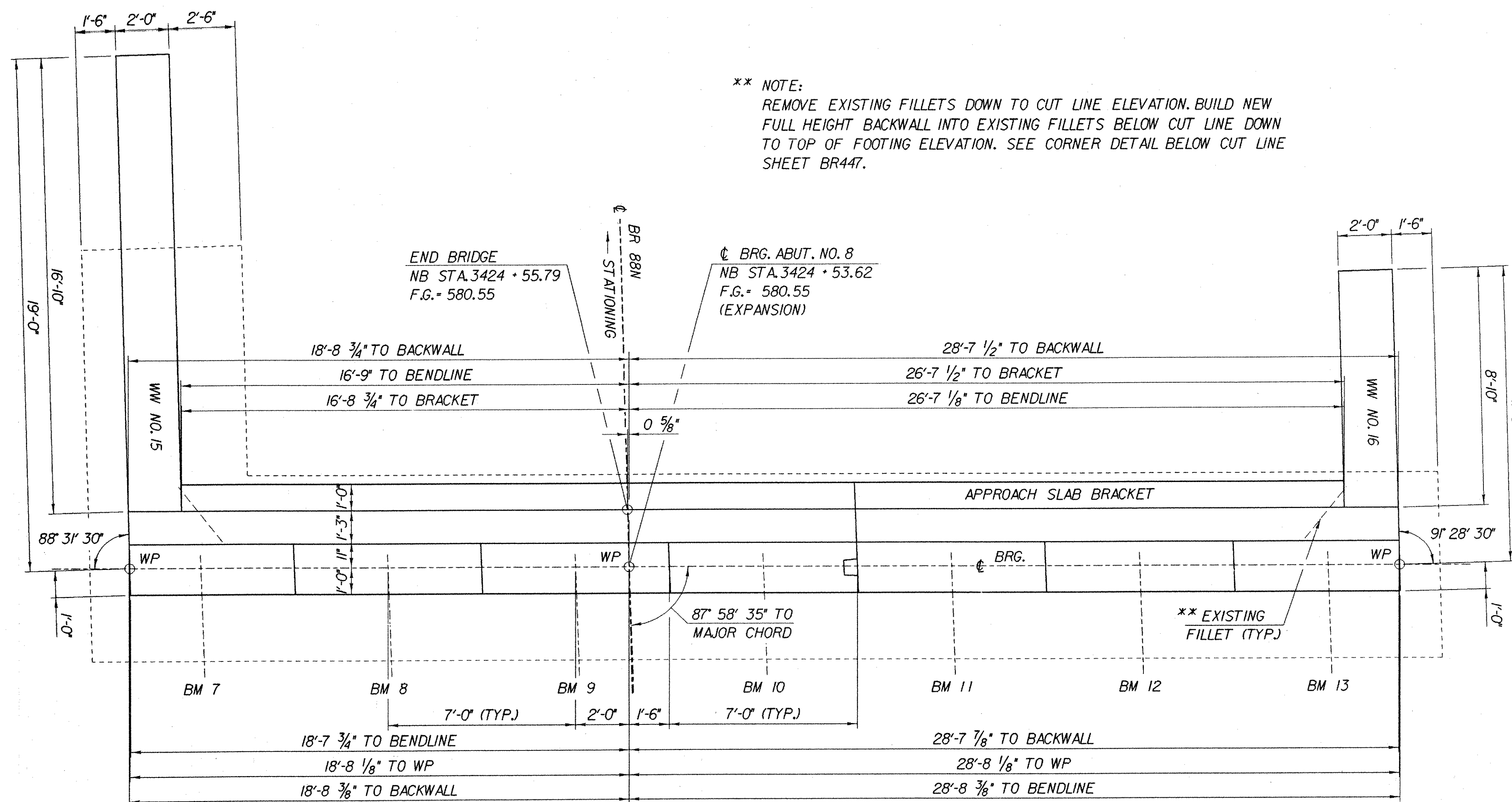


**** NOTE:**
 REMOVE EXISTING FILLETS DOWN TO CUT LINE ELEVATION. BUILD NEW FULL HEIGHT BACKWALL INTO EXISTING FILLETS BELOW CUT LINE DOWN TO TOP OF FOOTING ELEVATION. SEE CORNER DETAIL BELOW CUT LINE SHEET BR447.



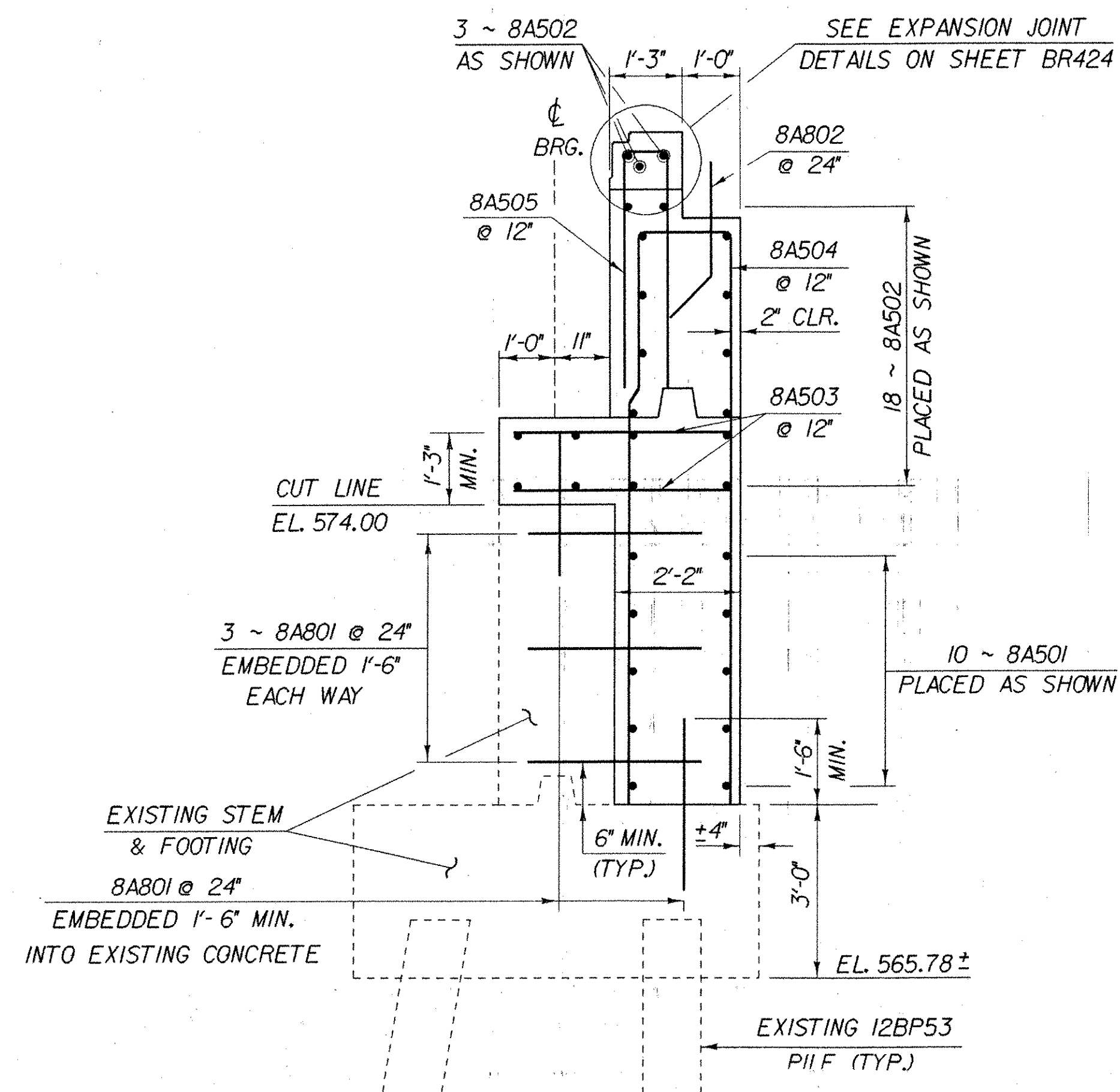
ABUTMENT NO. 8 PLAN

SCALE: 3/8" = 1'-0"

48 ~ 8A505 @ 12"

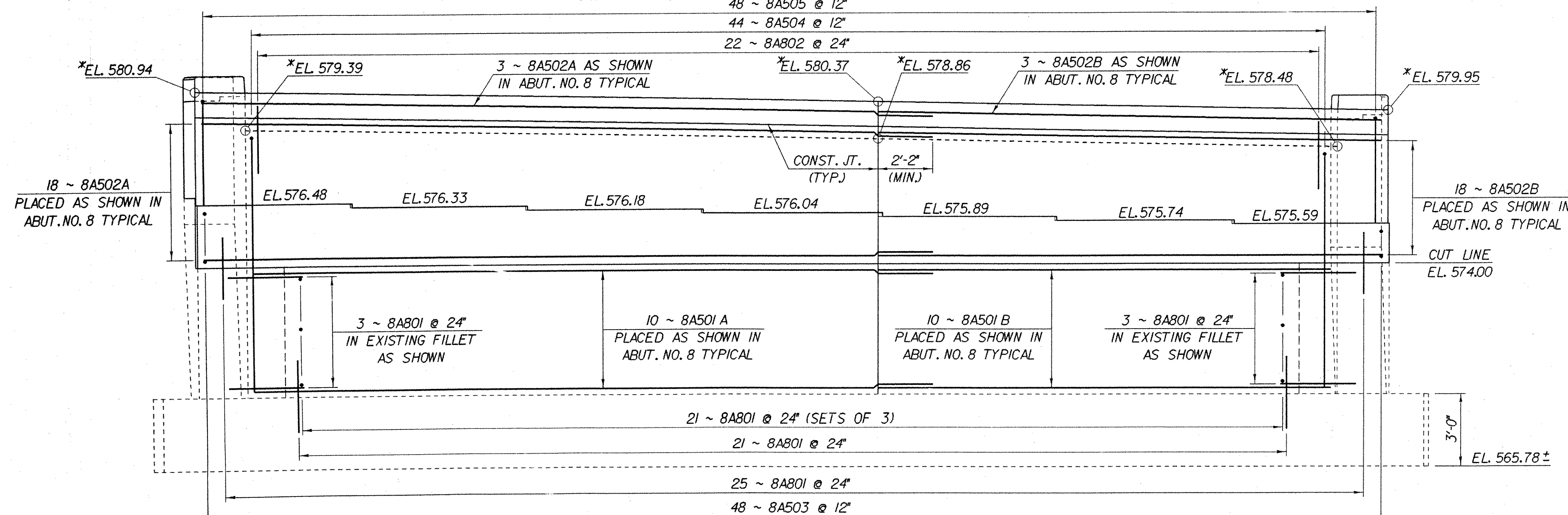
44 ~ 8A504 @ 12"

22 ~ 8A802 @ 24"



ABUTMENT NO. 8 TYPICAL

SCALE: 1/2" = 1'-0"



ABUTMENT NO. 8 ELEVATION

SCALE: 3/8" = 1'-0"

*** NOTE:**
 ELEVATIONS AT TOP OF BACKWALL AND APPROACH SLAB BRACKET TO BE VERIFIED BY THE RESIDENT ENGINEER AFTER STRUCTURAL STEEL IS ERECTED.

IMPORTANT NOTE: BRIDGE FINISHED GRADES ARE CENTERLINE GRADES.

NOTE:

NF = NEAR FACE
 FF = FAR FACE
 EF = EACH FACE
 ▲ = CUT TO FIT IN FIELD
 3" CLR. UNLESS OTHERWISE SPECIFIED ON THE PLANS.

STATE OF VERMONT AGENCY OF TRANSPORTATION	
Town Of FAIRFAX-FAIRFIELD-ST. ALBANS	Bridge No. 88N
Highway No. 1-89	Log Sta. Surv. Sta.
1-89 OVER ST. ALBANS SOUTH STATE HIGHWAY (EXIT 19) ABUTMENT NO. 8 DETAILS	
Designed By M. LOZIER	Drawn By K. CHISHOLM
Checked By M. LOZIER	Bridge Design Supervisor R.R. WHITCOMB
Date 2/00	Date 2/00
PROJECT FAIRFAX-FAIRFIELD-ST. ALBANS	PROJECT NO. 1M 089 - 3 (27)
I.G.C. Info. 96a056\Structures\sa056ab3.dgn	sa056ab3J
Bridge Sheet No. BR448	Sheet 206 of 370