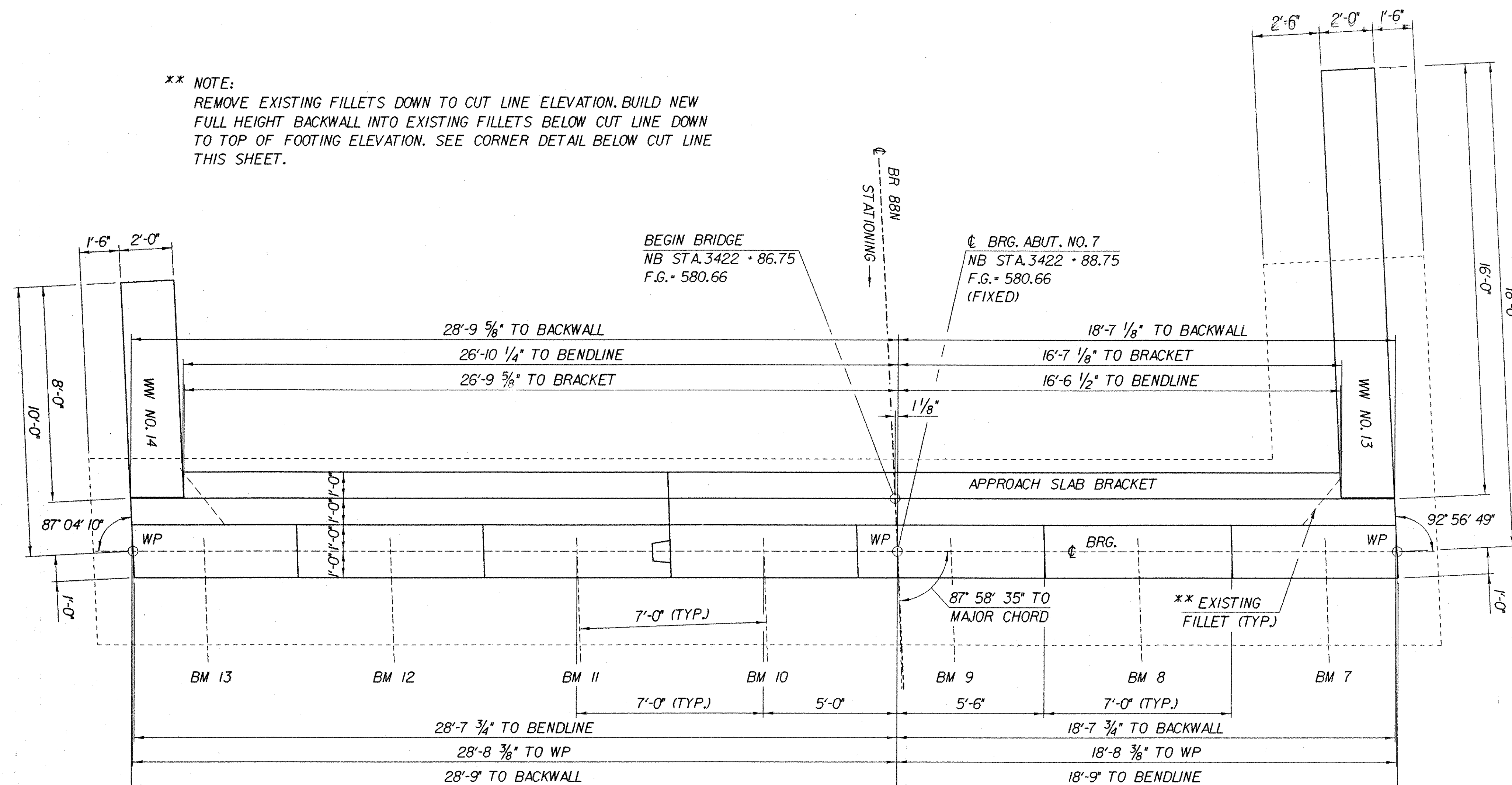
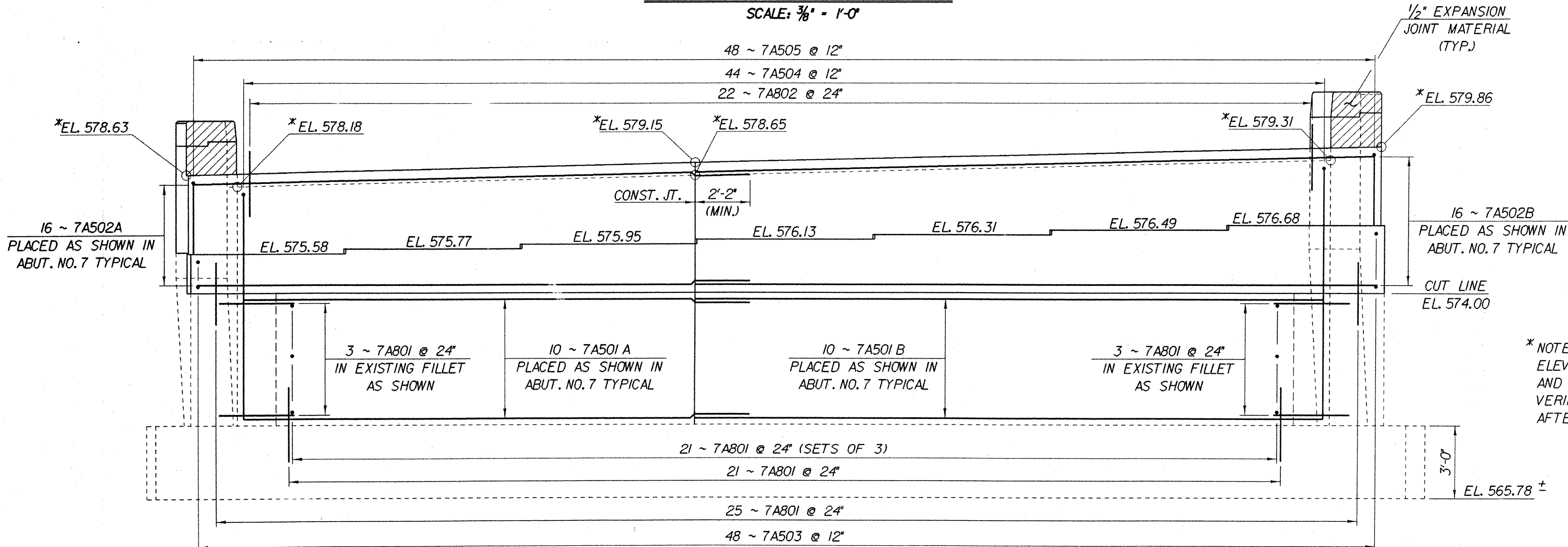


**** NOTE:**
REMOVE EXISTING FILLETS DOWN TO CUT LINE ELEVATION. BUILD NEW FULL HEIGHT BACKWALL INTO EXISTING FILLETS BELOW CUT LINE DOWN TO TOP OF FOOTING ELEVATION. SEE CORNER DETAIL BELOW CUT LINE THIS SHEET.

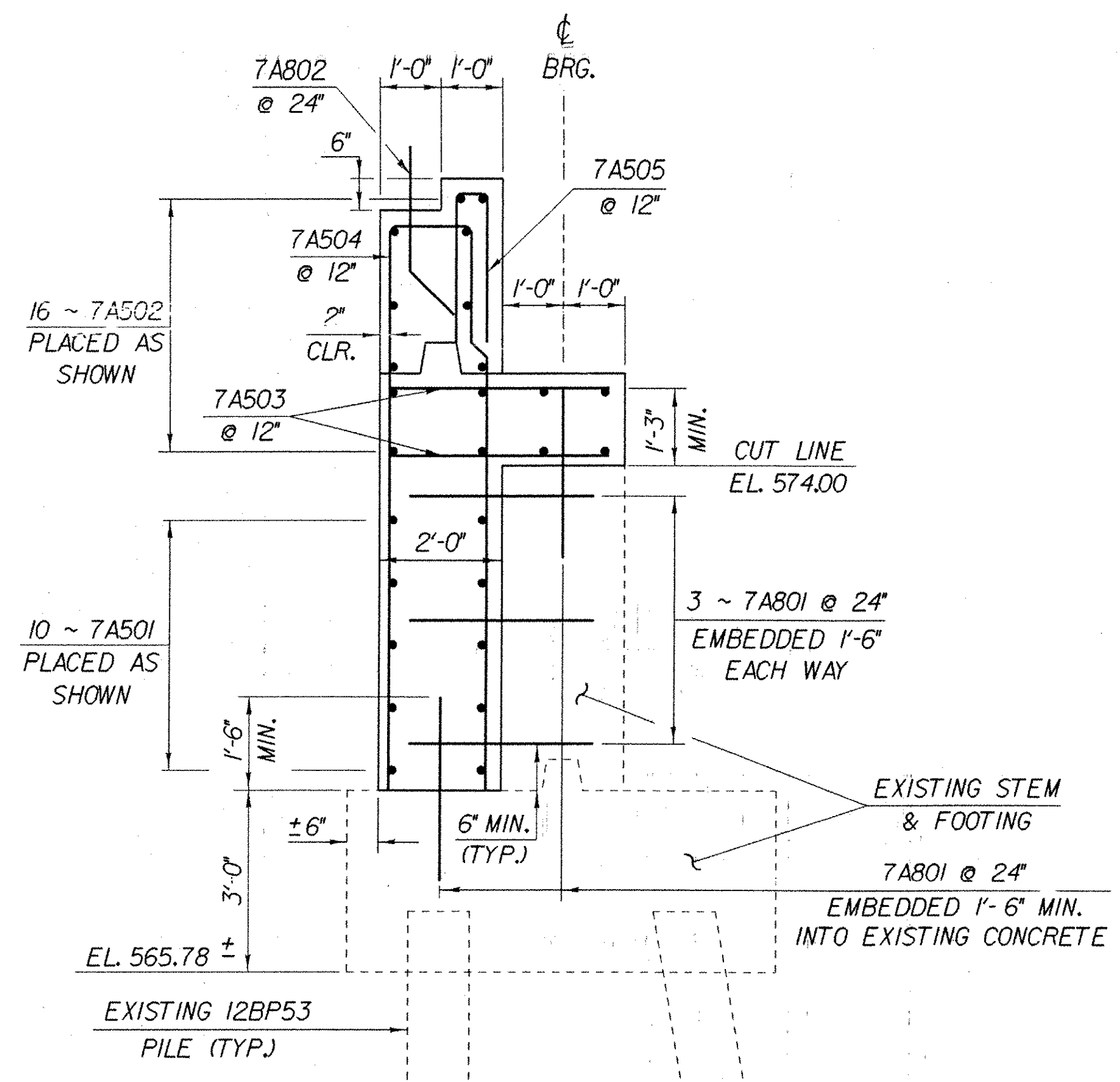


ABUTMENT NO. 7 PLAN
SCALE: 3/8" = 1'-0"

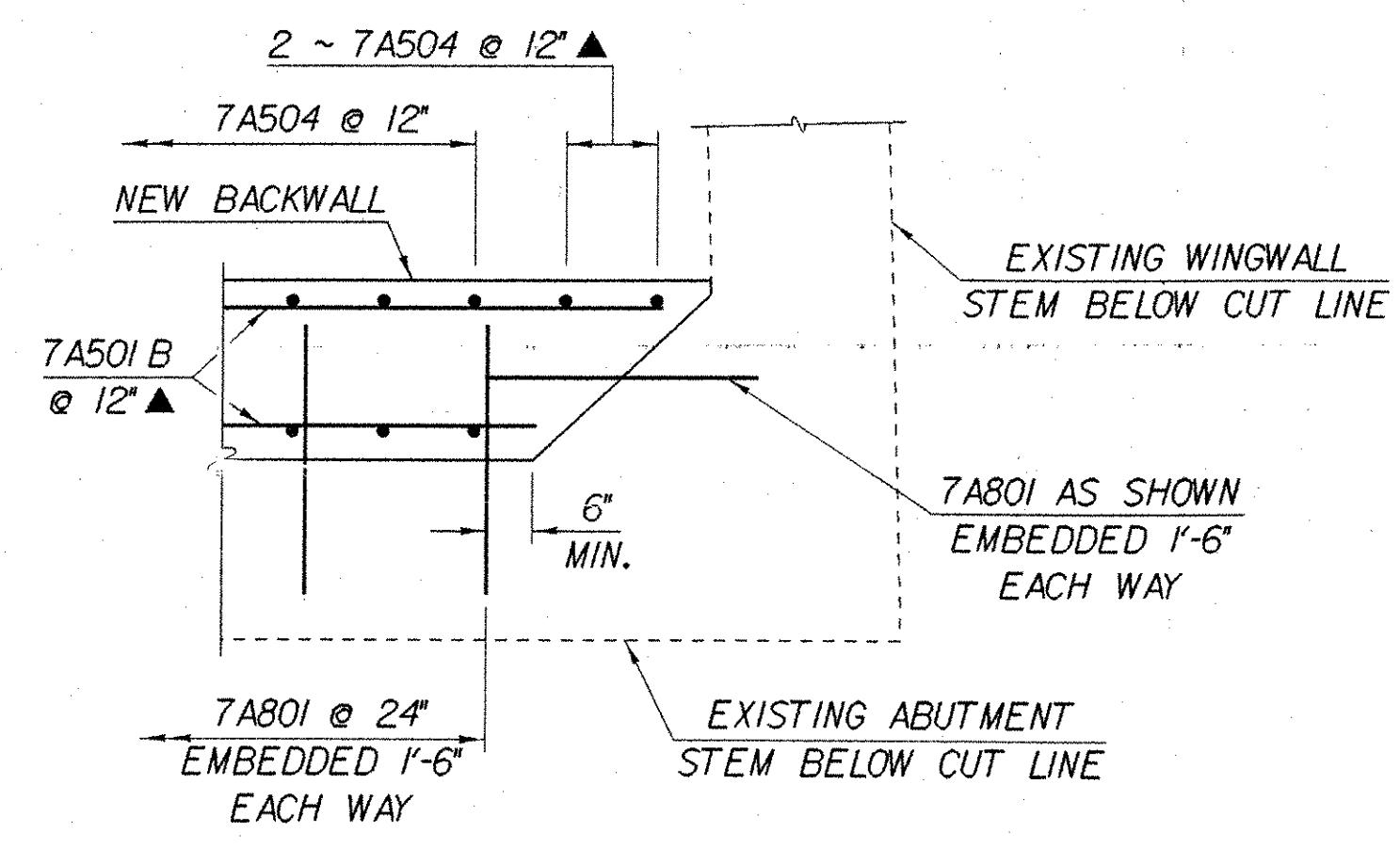


ABUTMENT NO. 7 ELEVATION
SCALE: 3/8" = 1'-0"

IMPORTANT NOTE: BRIDGE FINISHED GRADES ARE CENTERLINE GRADES.



ABUTMENT NO. 7 TYPICAL
SCALE: 1/2" = 1'-0"



CORNER DETAIL BELOW CUT LINE
(ALL OTHER WINGWALL CORNERS SIMILAR)
SCALE: 1/2" = 1'-0"

*** NOTE:**
ELEVATIONS AT TOP OF BACKWALL AND APPROACH SLAB BRACKET TO BE VERIFIED BY THE RESIDENT ENGINEER AFTER STRUCTURAL STEEL IS ERECTED.

NOTE:
NF - NEAR FACE
FF - FAR FACE
EF - EACH FACE
▲ - CUT TO FIT IN FIELD
3' CLR. UNLESS OTHERWISE SPECIFIED ON THE PLANS.

STATE OF VERMONT AGENCY OF TRANSPORTATION	
Town of FAIRFAX-FAIRFIELD-ST. ALBANS	Bridge No. 88N
Highway No. 1-89	Log Sta. Surv. Sta.
1-89 OVER ST. ALBANS SOUTH STATE HIGHWAY (EXIT 19)	
ABUTMENT NO. 7 DETAILS	
Designed By M. LOZIER	Drawn By K. CHISHOLM
Checked By M. LOZIER Date 2/00	Bridge Design Supervisor R. R. WHITCOMB Date 2/00
PROJECT FAIRFAX-FAIRFIELD-ST. ALBANS	
PROJECT NO. 1M 089 - 3 (27)	
I.G.C. Info. 96a056Structures\sa056ab3.dgn sa056ab7.j	
Bridge Sheet No. BR447	Sheet 199 of 370