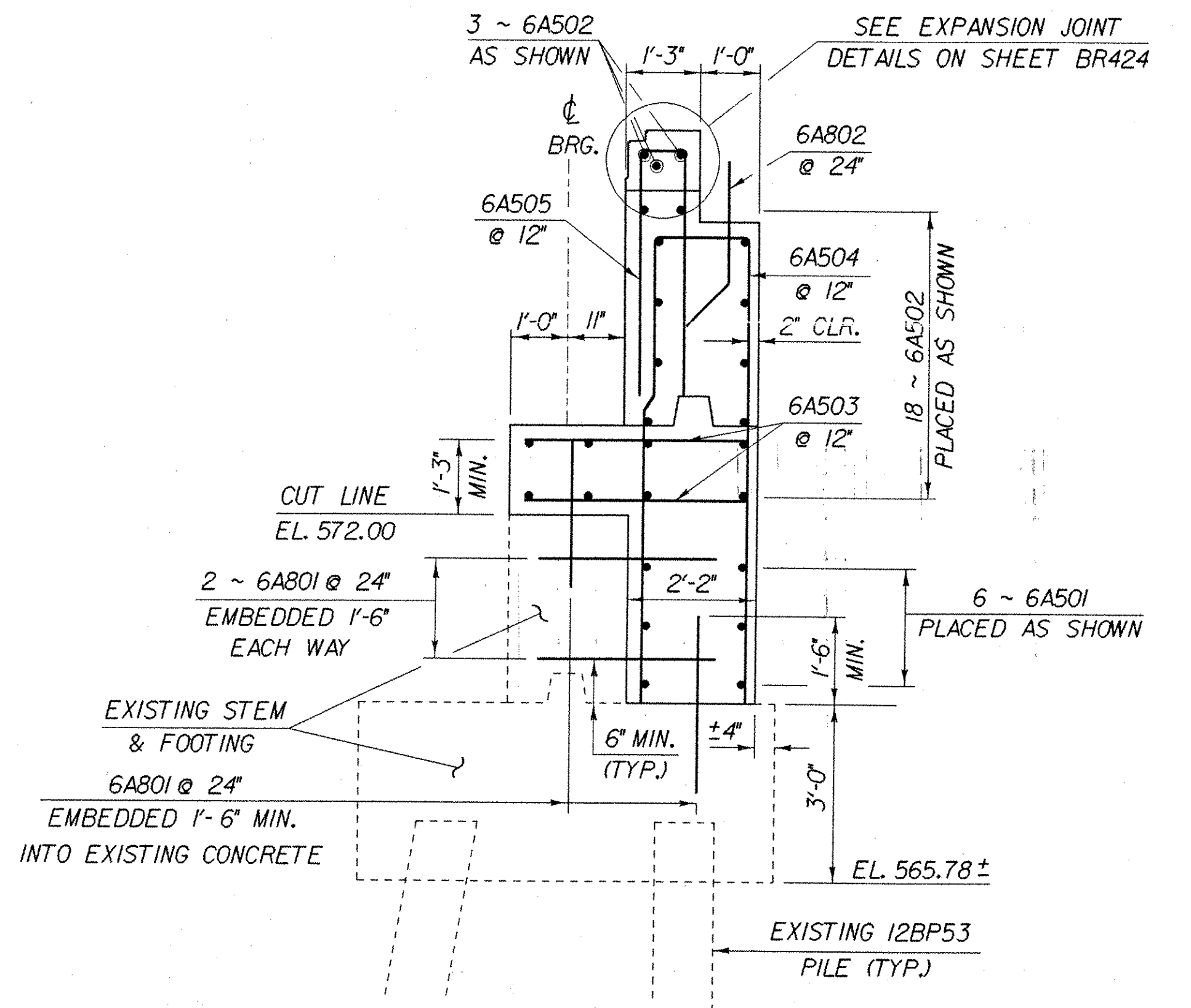


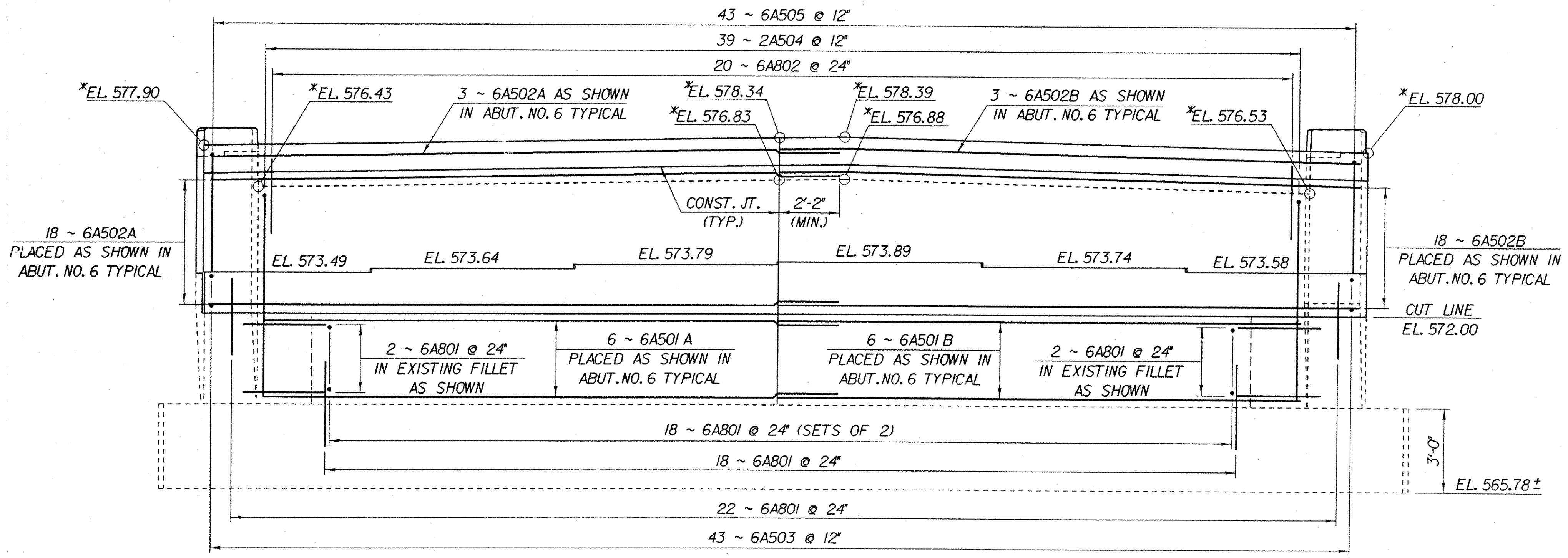
ABUTMENT NO. 6 PLAN
SCALE: 3/8" = 1'-0"

** NOTE:
REMOVE EXISTING FILLETS DOWN TO CUT LINE ELEVATION. BUILD NEW FULL HEIGHT BACKWALL INTO EXISTING FILLETS BELOW CUT LINE DOWN TO TOP OF FOOTING ELEVATION. SEE CORNER DETAIL BELOW CUT LINE SHEET BR439.



ABUTMENT NO. 6 TYPICAL
SCALE: 1/2" = 1'-0"

* NOTE:
ELEVATIONS AT TOP OF BACKWALL AND APPROACH SLAB BRACKET TO BE VERIFIED BY THE RESIDENT ENGINEER AFTER STRUCTURAL STEEL IS ERECTED.



ABUTMENT NO. 6 ELEVATION
SCALE: 3/8" = 1'-0"

IMPORTANT NOTE: BRIDGE FINISHED GRADES ARE CENTERLINE GRADES.

NOTE:
NF = NEAR FACE
FF = FAR FACE
EF = EACH FACE
▲ = CUT TO FIT IN FIELD
3" CLR. UNLESS OTHERWISE SPECIFIED ON THE PLANS.

| | |
|---|---|
| STATE OF VERMONT AGENCY OF TRANSPORTATION | |
| Town Of FAIRFAX-FAIRFIELD- ST. ALBANS | Bridge No. 885 |
| Highway No. 1-89 | Log Sta. Surv. Sta. |
| 1-89 OVER ST. ALBANS SOUTH STATE HIGHWAY (EXIT 19) | |
| ABUTMENT NO. 6 DETAILS | |
| Designed By M. LOZIER | Drawn By K. CHISHOLM |
| Checked By M. LOZIER | Bridge Design Supervisor R. R. WHITCOMB |
| Date 2/00 | Date 2/00 |
| PROJECT FAIRFAX-FAIRFIELD-ST. ALBANS | PROJECT NO. 1M 089 - 3 (27) |
| I.G.C. Info. 96a056Structures\sd056a2.dgn | Sheet 192 of 370 |
| Bridge Sheet No. BR440 | |