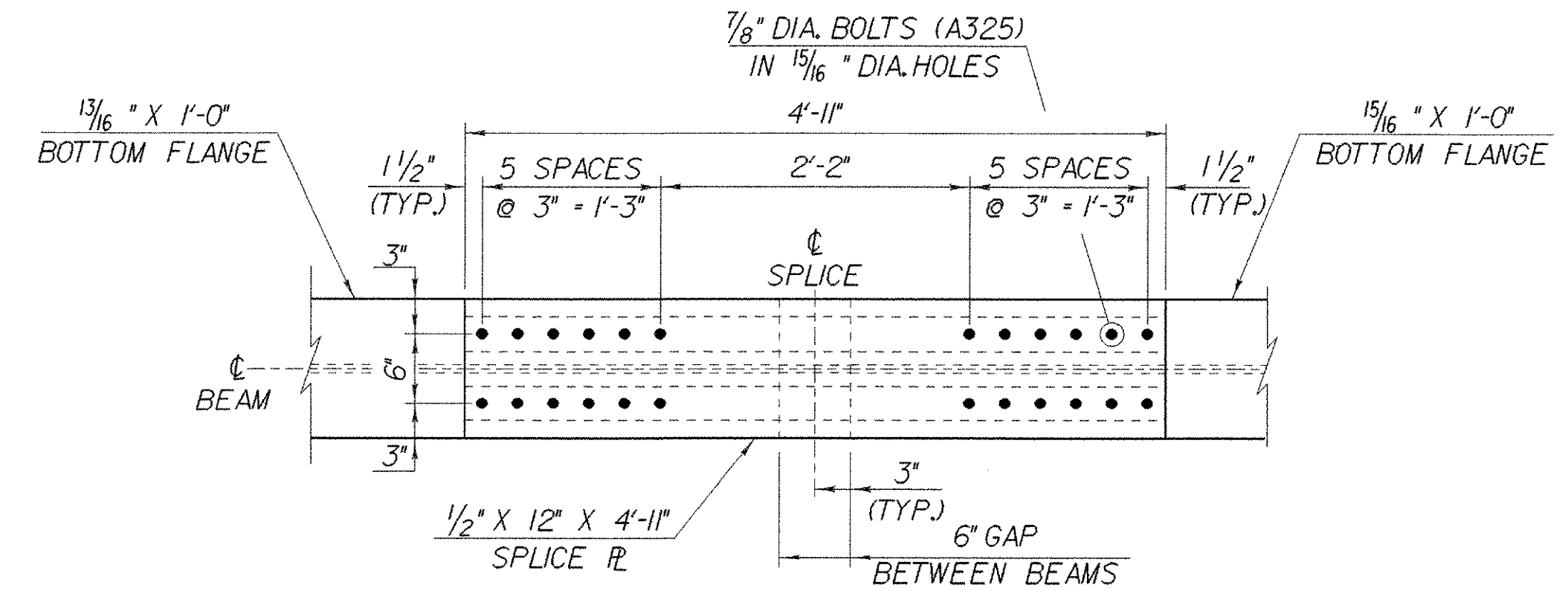


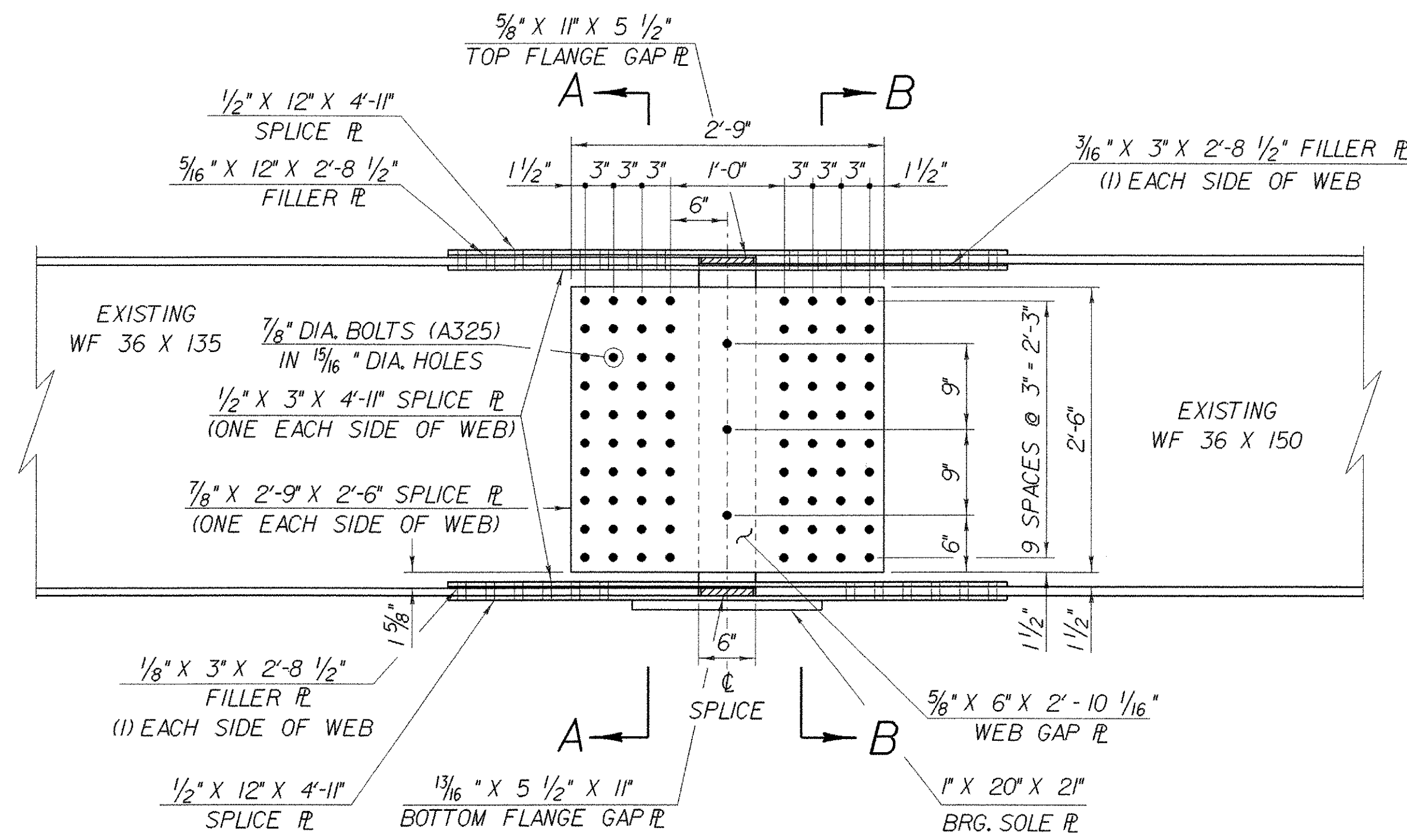
PLAN TOP FLANGE @ PIER NO. 3

(PIER NO. 4 REVERSE IMAGE)
SCALE: 1" = 1'-0"



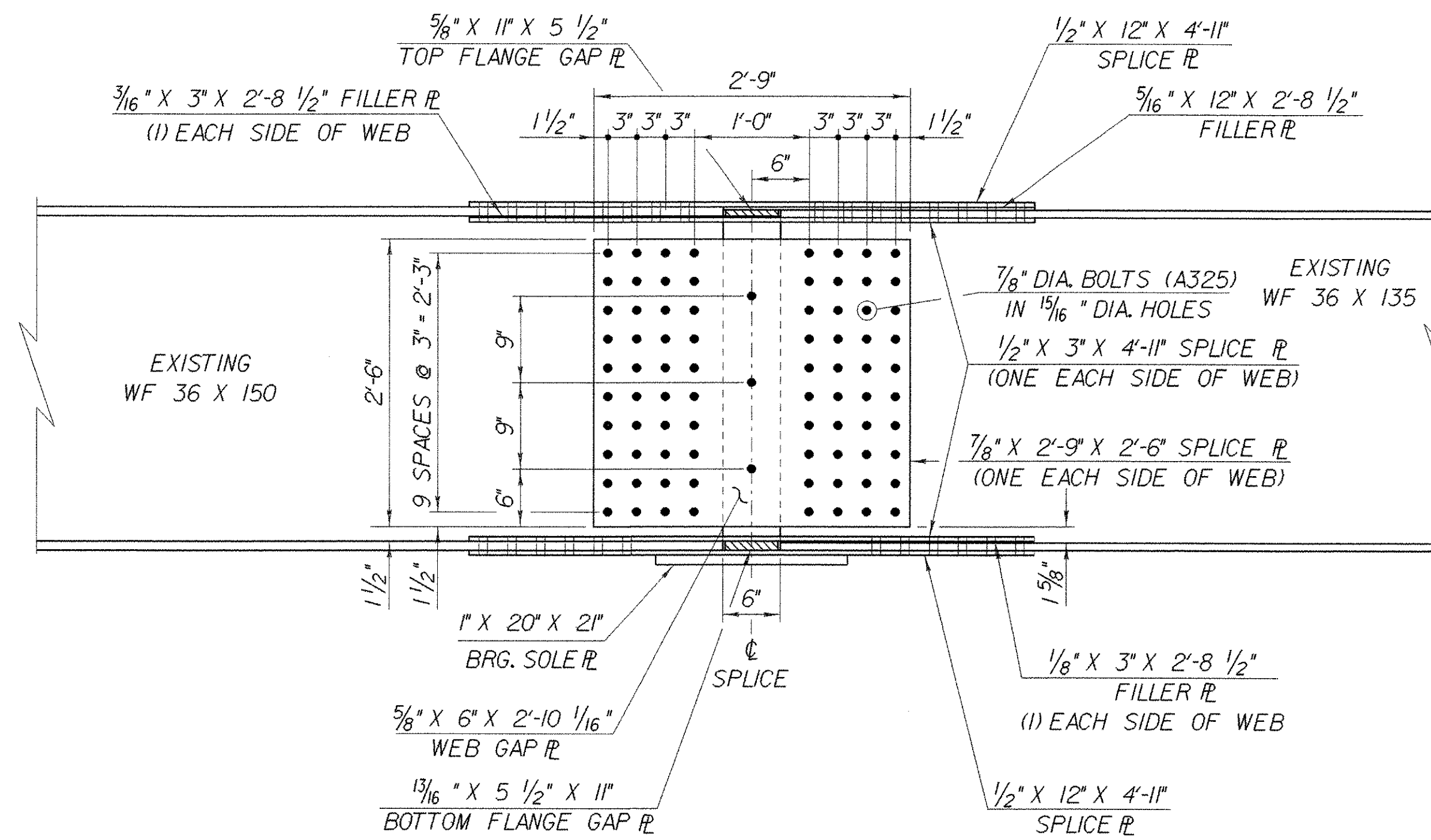
PLAN BOTTOM FLANGE @ PIER NO. 3

(PIER NO. 4 REVERSE IMAGE)
SCALE: 1" = 1'-0"



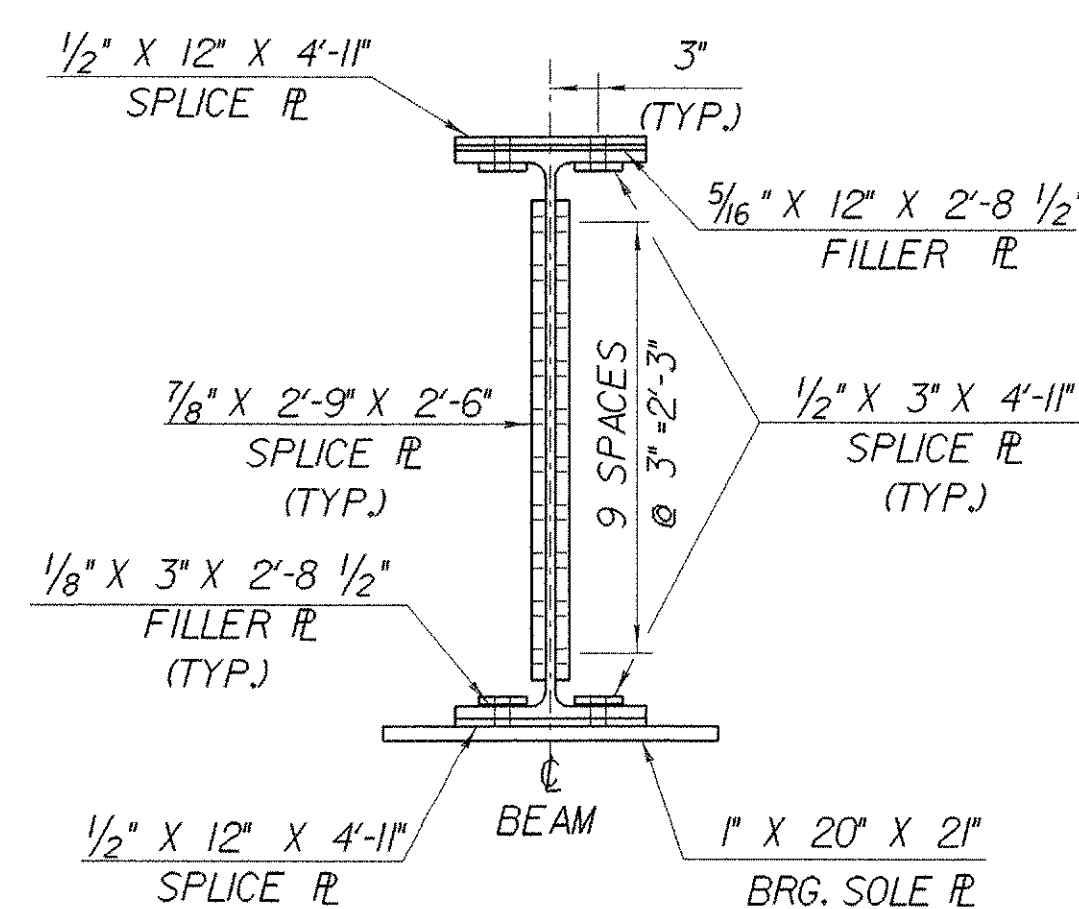
BEAM ELEVATION @ PIER NO. 3

SCALE: 1" = 1'-0"



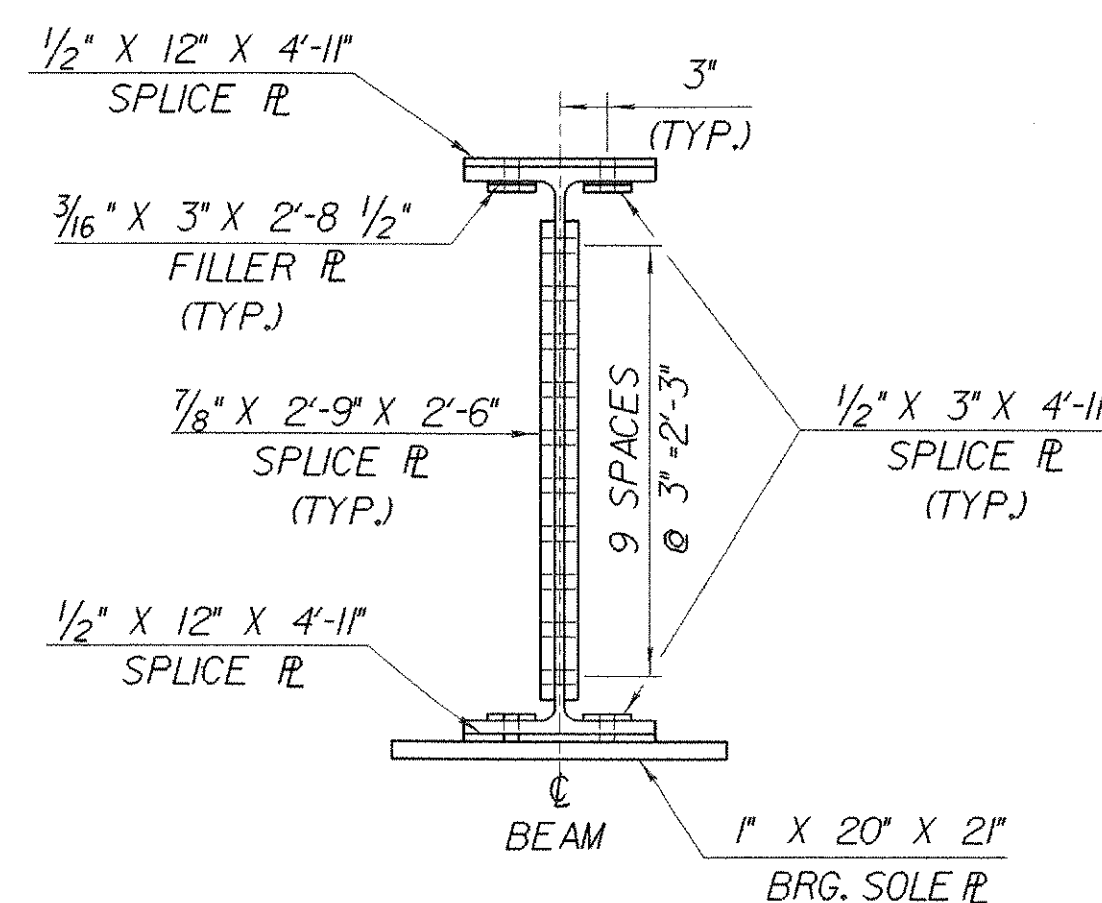
BEAM ELEVATION @ PIER NO. 4

SCALE: 1" = 1'-0"



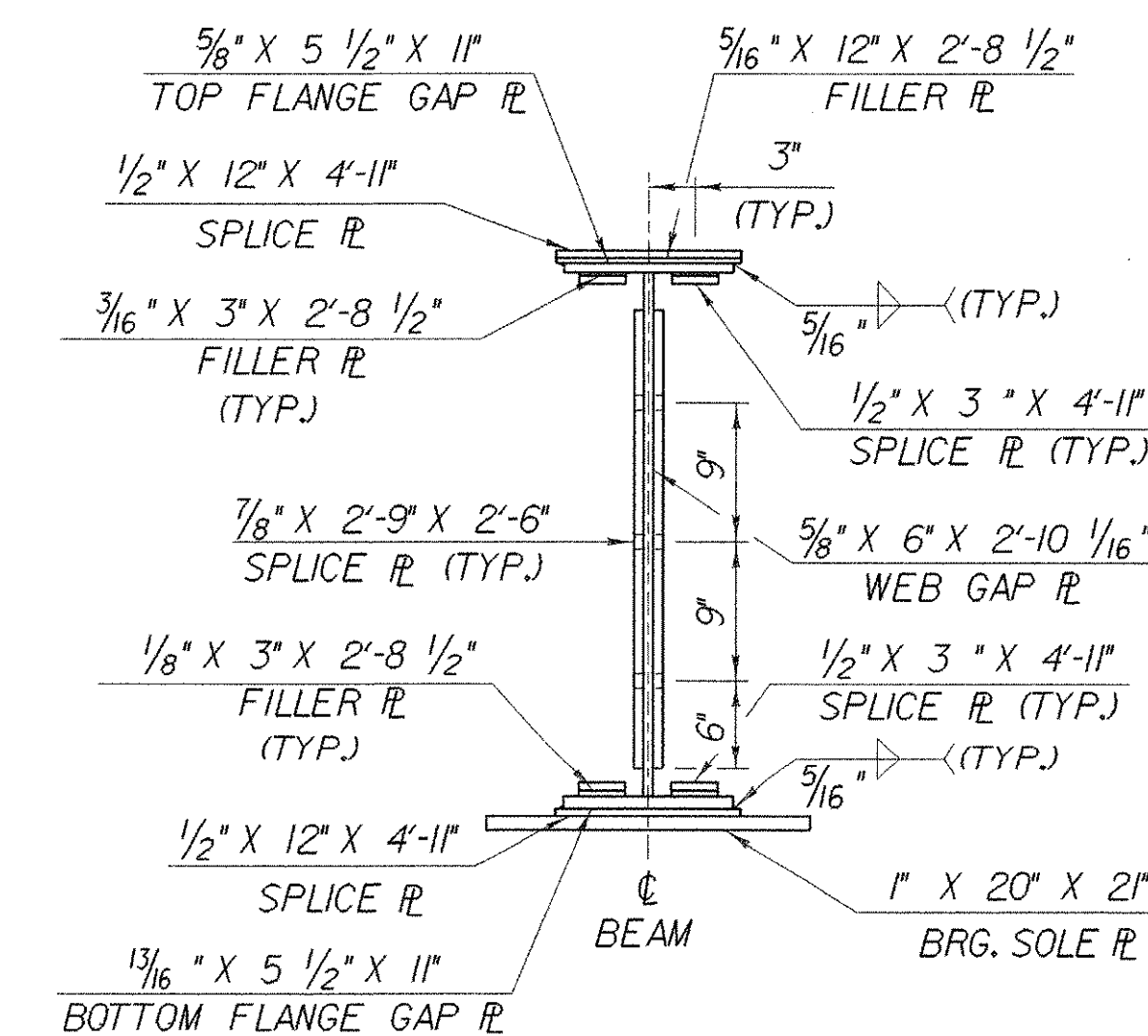
SECTION A-A

SCALE: 1" = 1'-0"



SECTION B-B

SCALE: 1" = 1'-0"



SECTION @ C SPLICER

SCALE: 1" = 1'-0"

NOTES:

1. ALL NEW STEEL FOR SPLICE ASSEMBLY SHALL CONFORM TO AASHTO M270 GR 50 PAINTED.
2. ALL NEW STEEL FOR SPLICE PLATES, EXCLUDING FILLER PLATES, SHALL BE CHARPY V-NOTCH TESTED.

**STATE OF VERMONT
AGENCY OF TRANSPORTATION**

Town of FAIRFAX-FAIRFIELD-ST. ALBANS	Bridge No. 88N
Highway No. 1-89	Log Sta. Surv. Sta.
1-89 OVER ST. ALBANS SOUTH STATE HIGHWAY (EXIT 19)	
88N STRUCTURAL STEEL SPLICE DETAILS	
Designed By J. ARMSTRONG	Drawn By K. CHISHOLM
Checked By M. LOZIER	Date 2/00
Bridge Design Supervisor R.R. WHITCOMB	Date 2/00
PROJECT FAIRFAX-FAIRFIELD-ST. ALBANS	PROJECT NO. 1M 089 - 3 (27)
I.G.C. Info. 96a056Structures\sa056fr3.dgn	sa056gd4j
Bridge Sheet No. BR417	Sheet 169 of 370