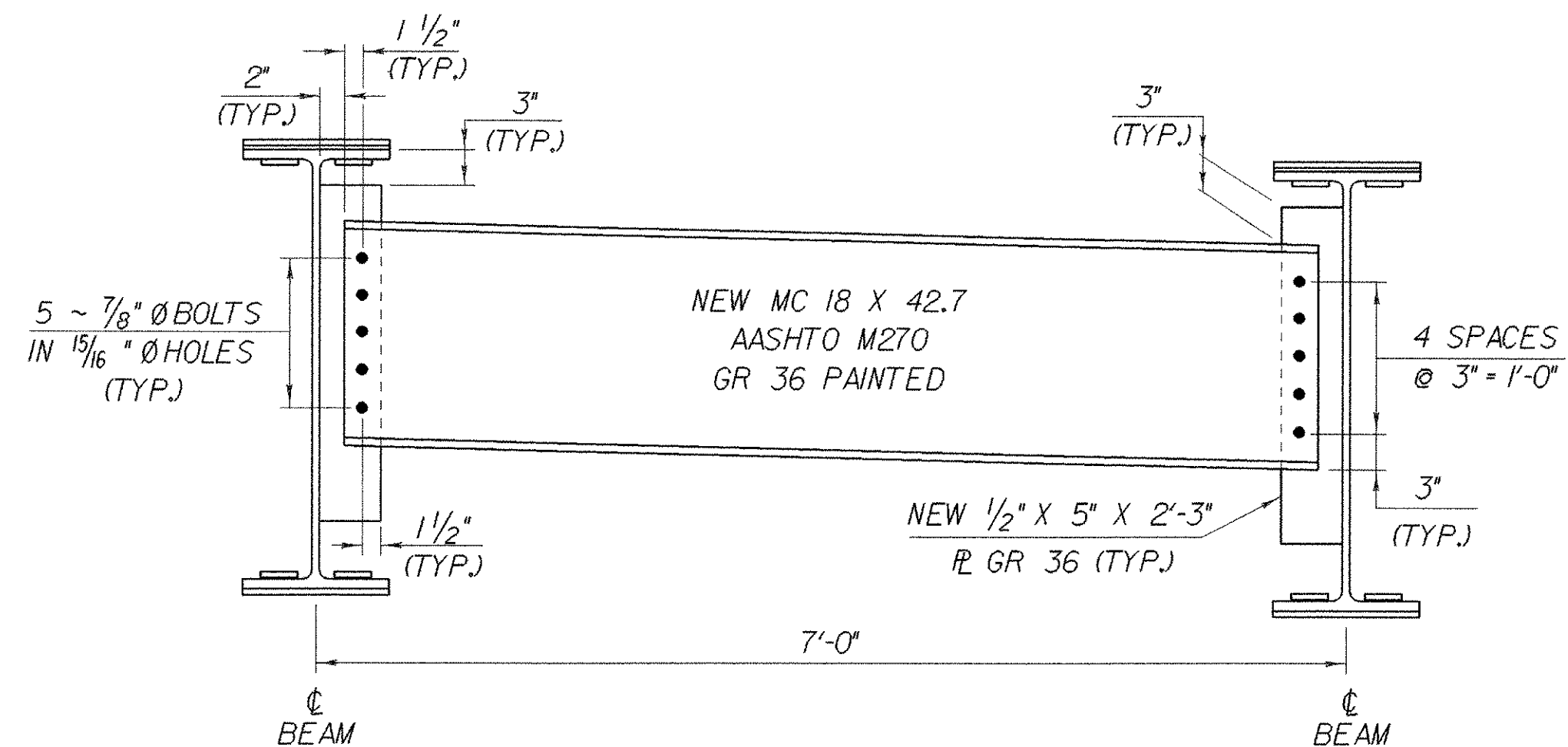
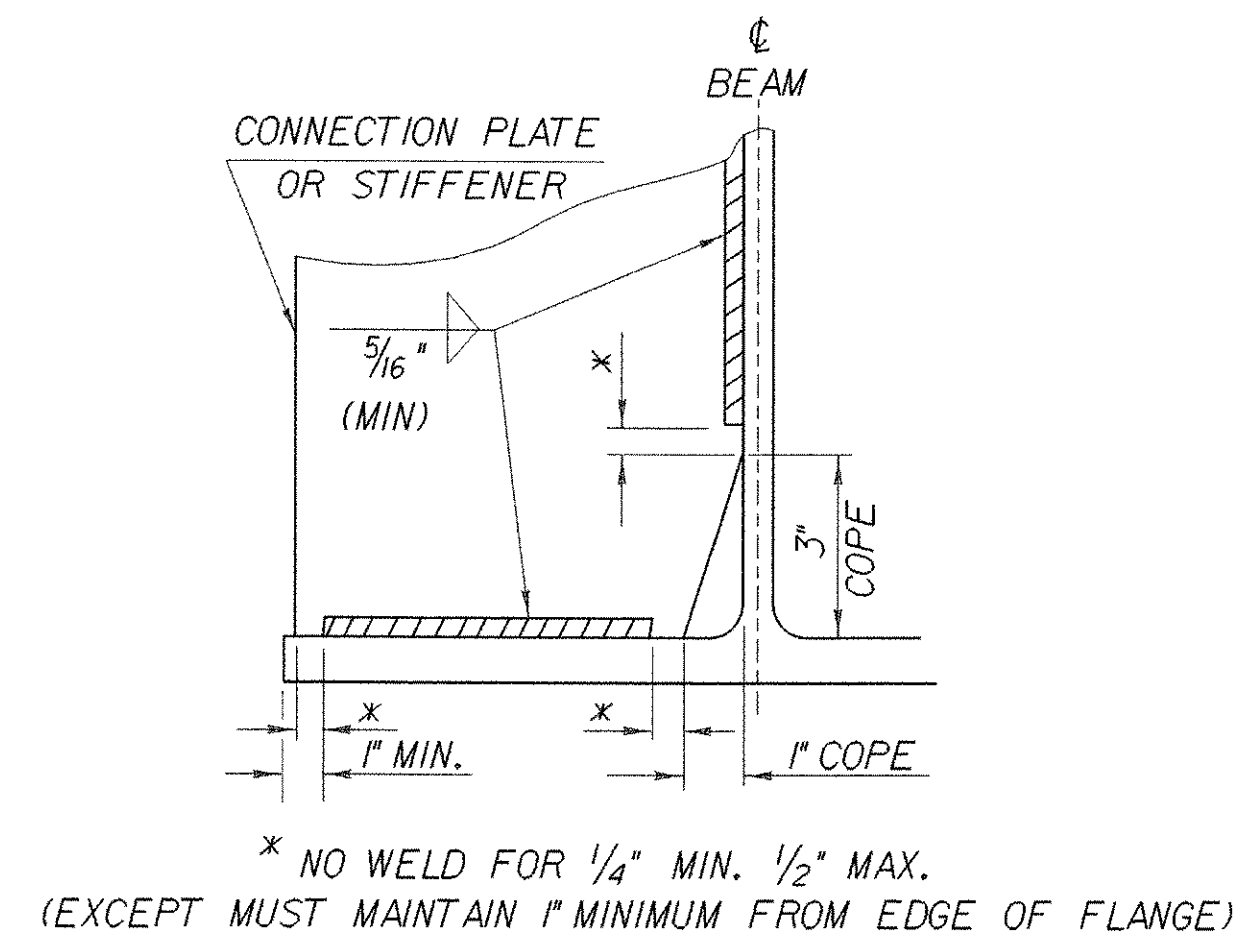


**ABUTMENT DIAPHRAGM**  
SCALE 1" = 1'-0"



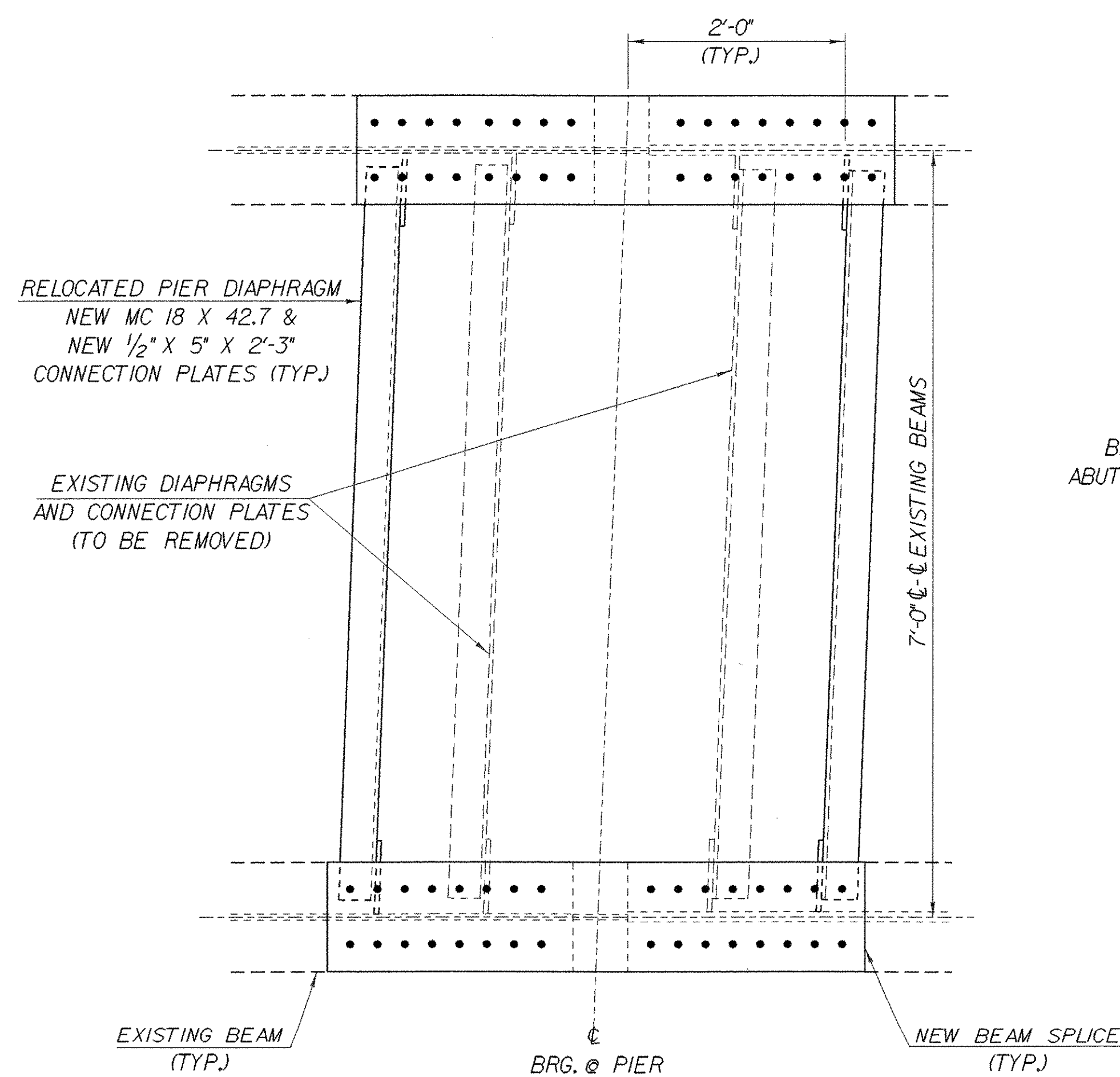
**PIER DIAPHRAGM**  
SCALE 1" = 1'-0"



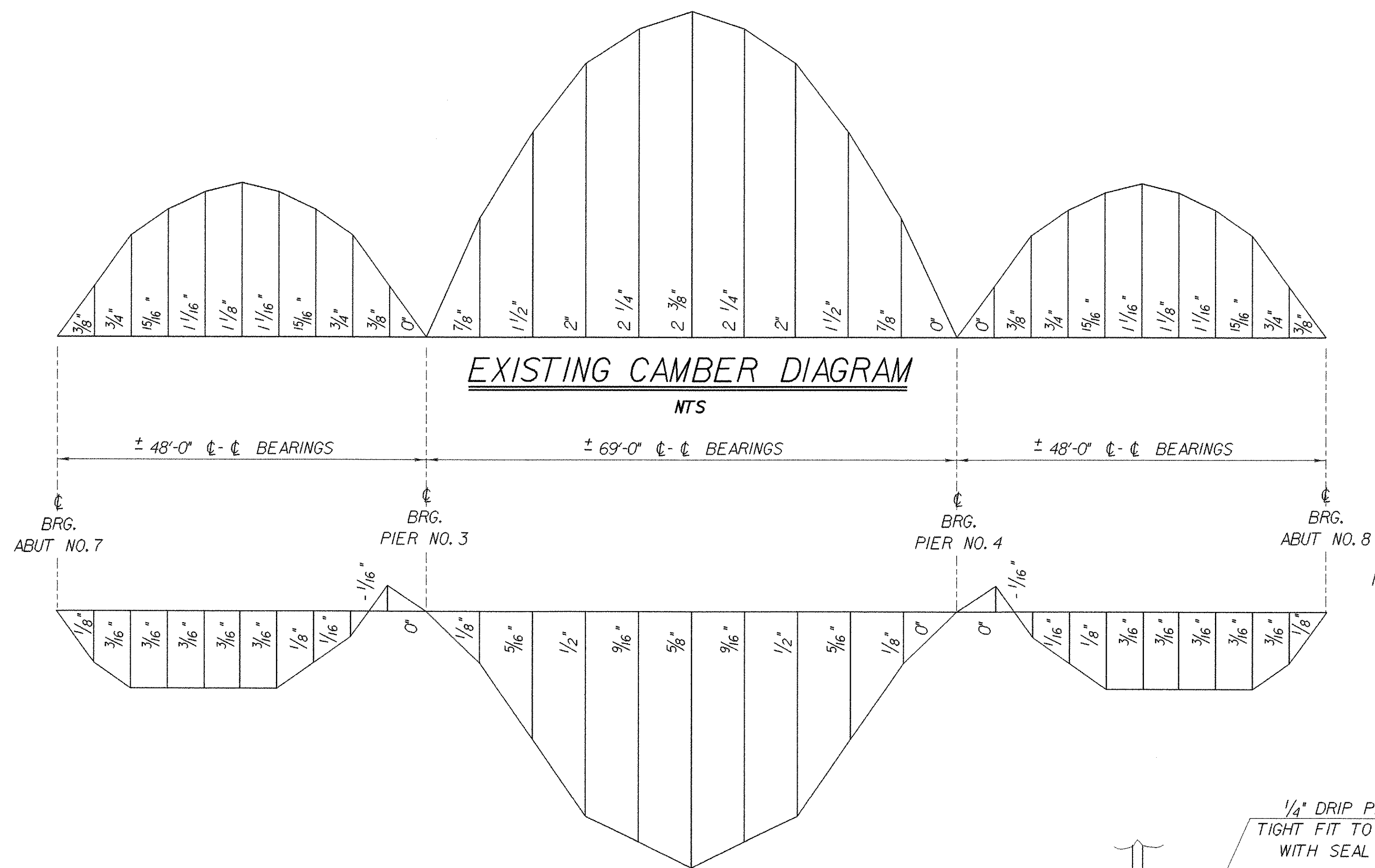
\* NO WELD FOR 1/4" MIN. 1/2" MAX.  
(EXCEPT MUST MAINTAIN 1" MINIMUM FROM EDGE OF FLANGE)

**WELD TERMINATION AND COPING  
DETAILS FOR STEEL MEMBERS**

NTS



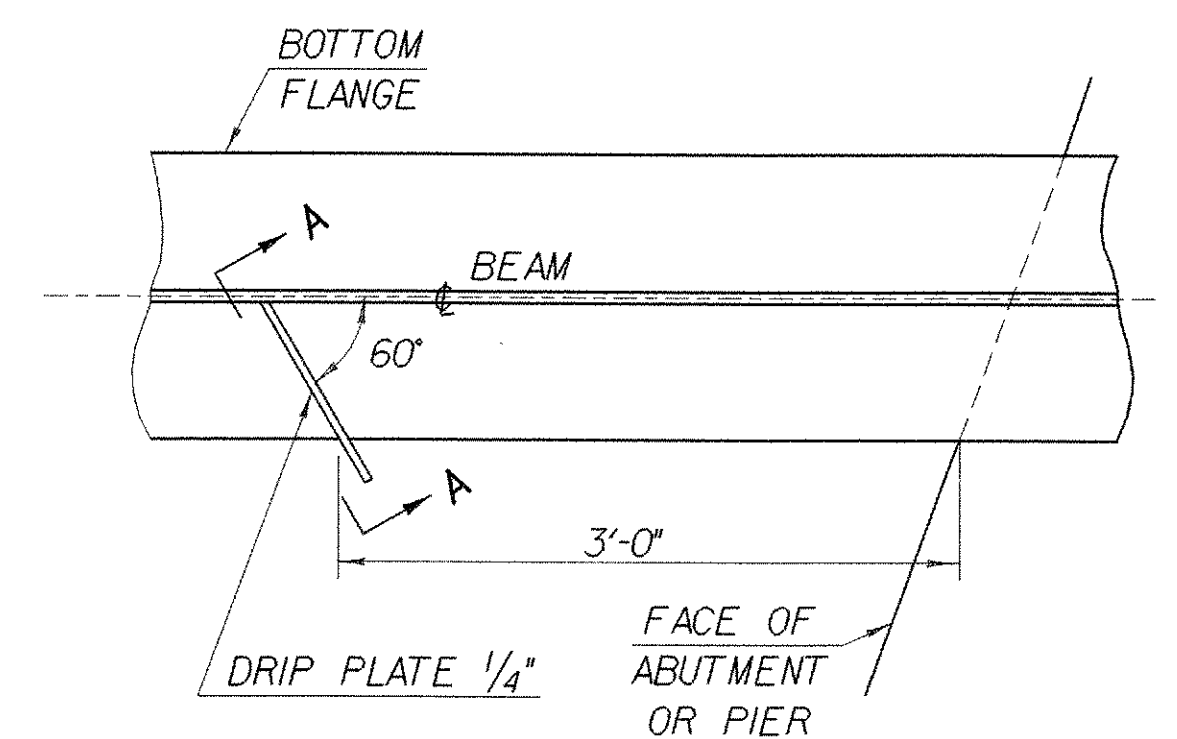
**PIER DIAPHRAGM PLAN**  
SCALE 1" = 1'-0"



**EXISTING CAMBER DIAGRAM**  
NTS

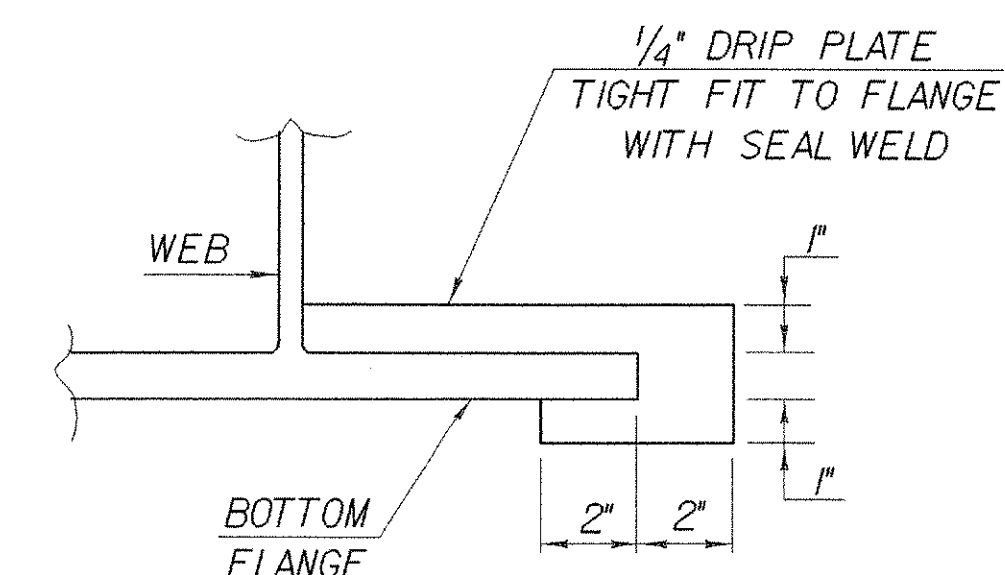
**DEAD LOAD DEFLECTION DIAGRAM**  
NTS

NOTE:  
EXISTING CAMBER AND DEFLECTION MEASUREMENTS  
ARE GIVEN IN INCHES @ TENTH POINTS.



**PLAN DRIP PLATE**  
NTS

NOTE: DRIP PLATES SHALL BE PLACED ON OUTSIDE EDGE OF FASCIA BEAMS ON THE HIGH SIDE OF ALL PIERS AND ABUTMENTS OR AS INDICATED ON PROJECT PLANS.



**SECTION A - A**  
NTS

<b>STATE OF VERMONT AGENCY OF TRANSPORTATION</b>			
Town of <b>FAIRFAX-FAIRFIELD-ST. ALBANS</b>	Bridge No. <b>88N</b>		
Highway No. <b>I-89</b>	Log Sta.		
<b>1-89 OVER ST. ALBANS SOUTH STATE HIGHWAY (EXIT 19)</b>			
<b>88N STRUCTURAL STEEL CONNECTION DETAILS</b>			
Designed By <b>J. ARMSTRONG</b>	Drawn By <b>K. CHISHOLM</b>		
Checked By <b>M. LOZIER</b>	Date <b>2/00</b>	Bridge Design Supervisor <b>R.R. WHITCOMB</b>	Date <b>2/00</b>
PROJECT <b>FAIRFAX-FAIRFIELD-ST. ALBANS</b>		PROJECT NO. <b>1M 089 - 3 (27)</b>	
I.G.C. Info. <b>96a056Structures\sa056fr3.dgn</b>		sa056gd5J	
Bridge Sheet No. <b>BR416</b>		Sheet <b>168</b> of <b>370</b>	