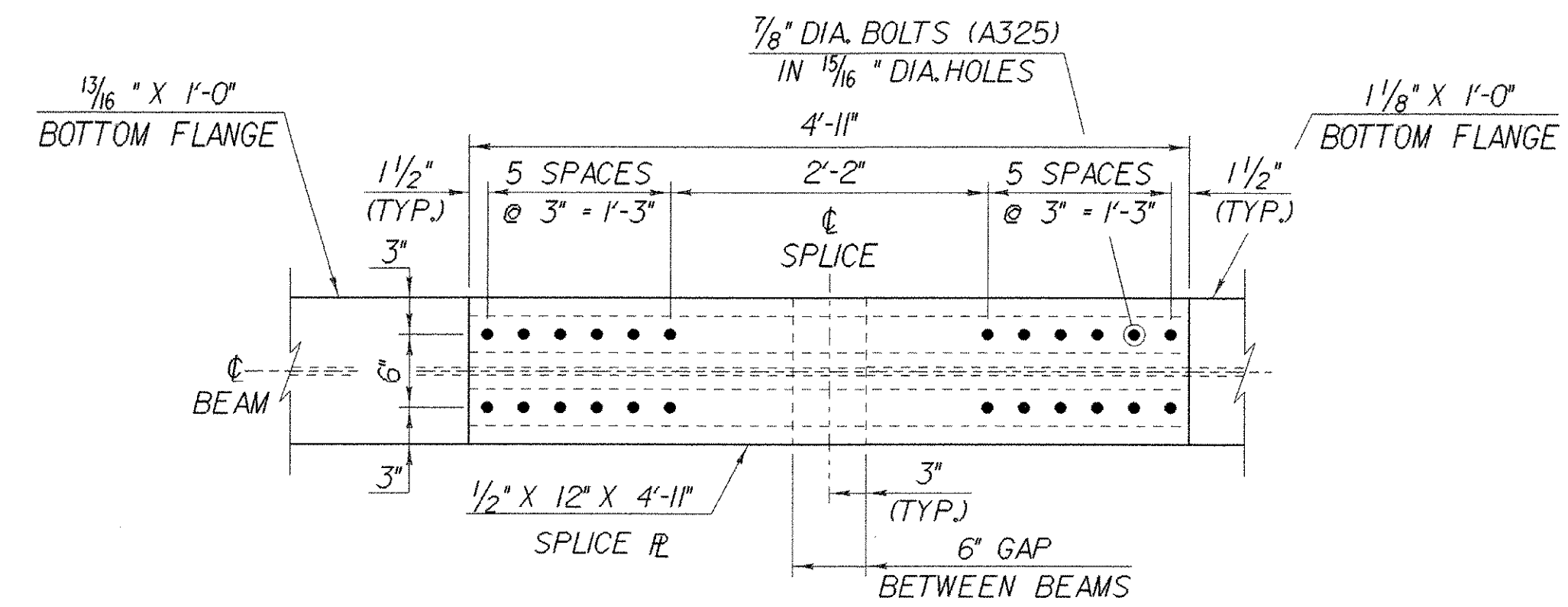
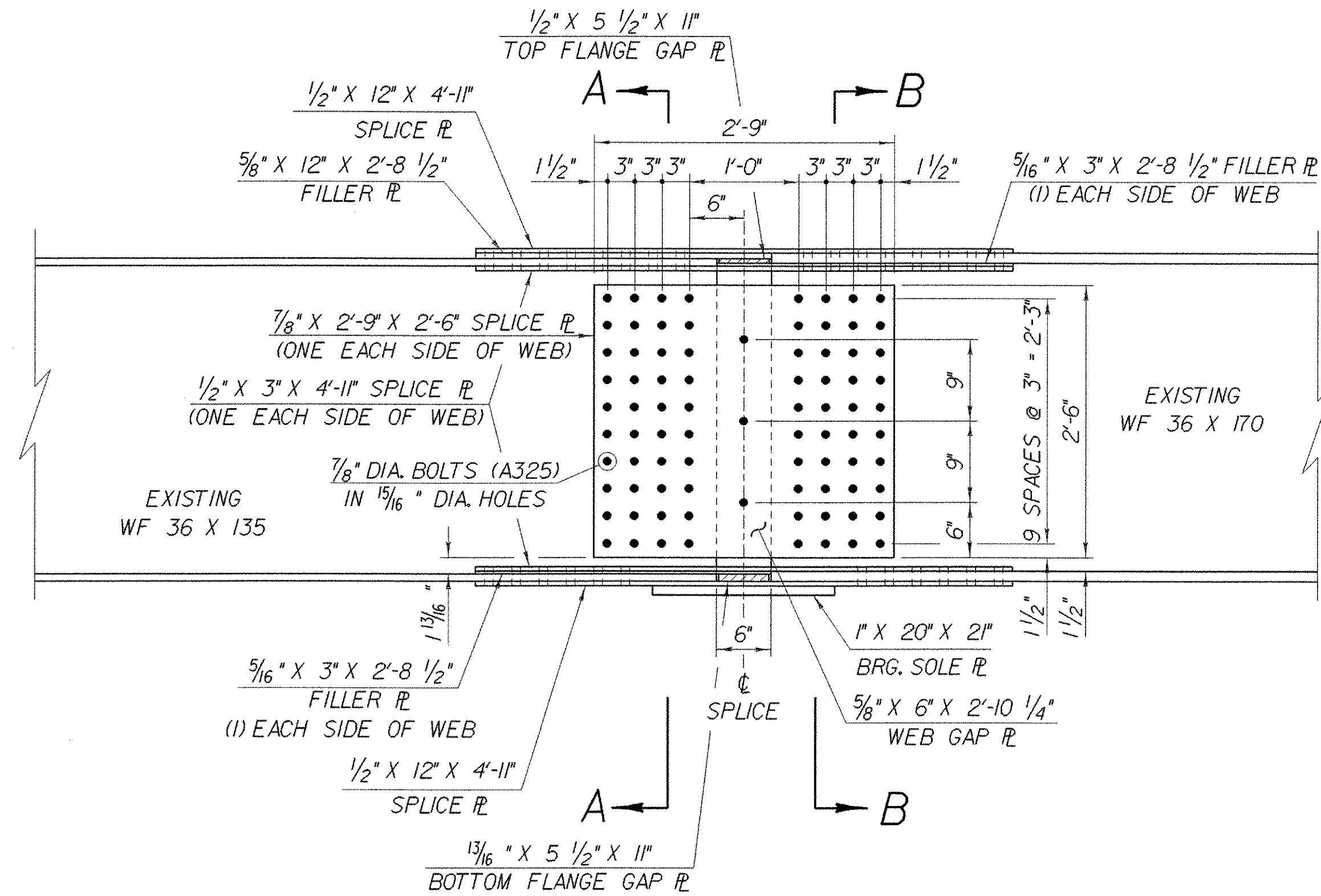


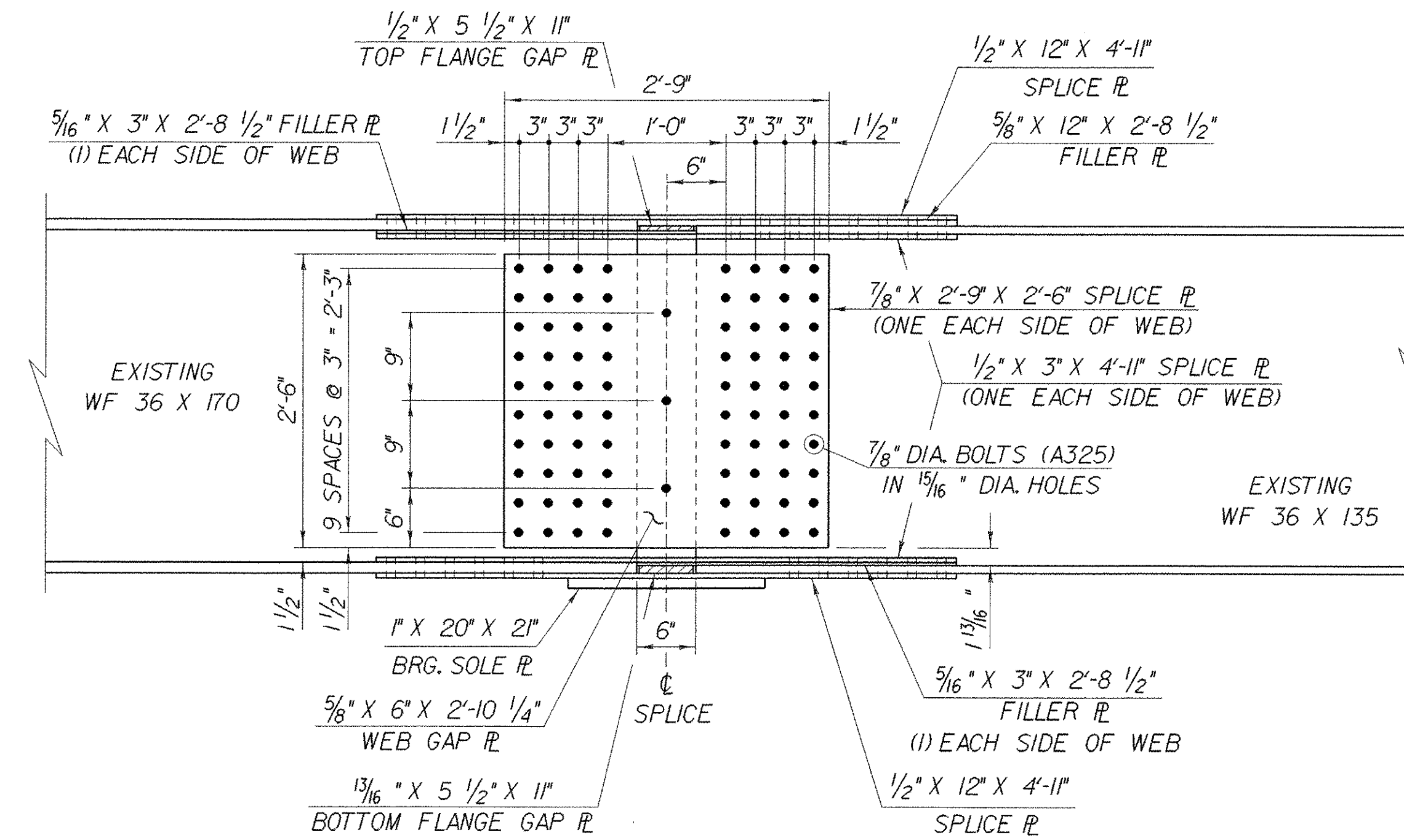
**PLAN TOP FLANGE @ PIER NO. 1**  
 (PIER NO. 2 REVERSE IMAGE)  
 SCALE: 1" = 1'-0"



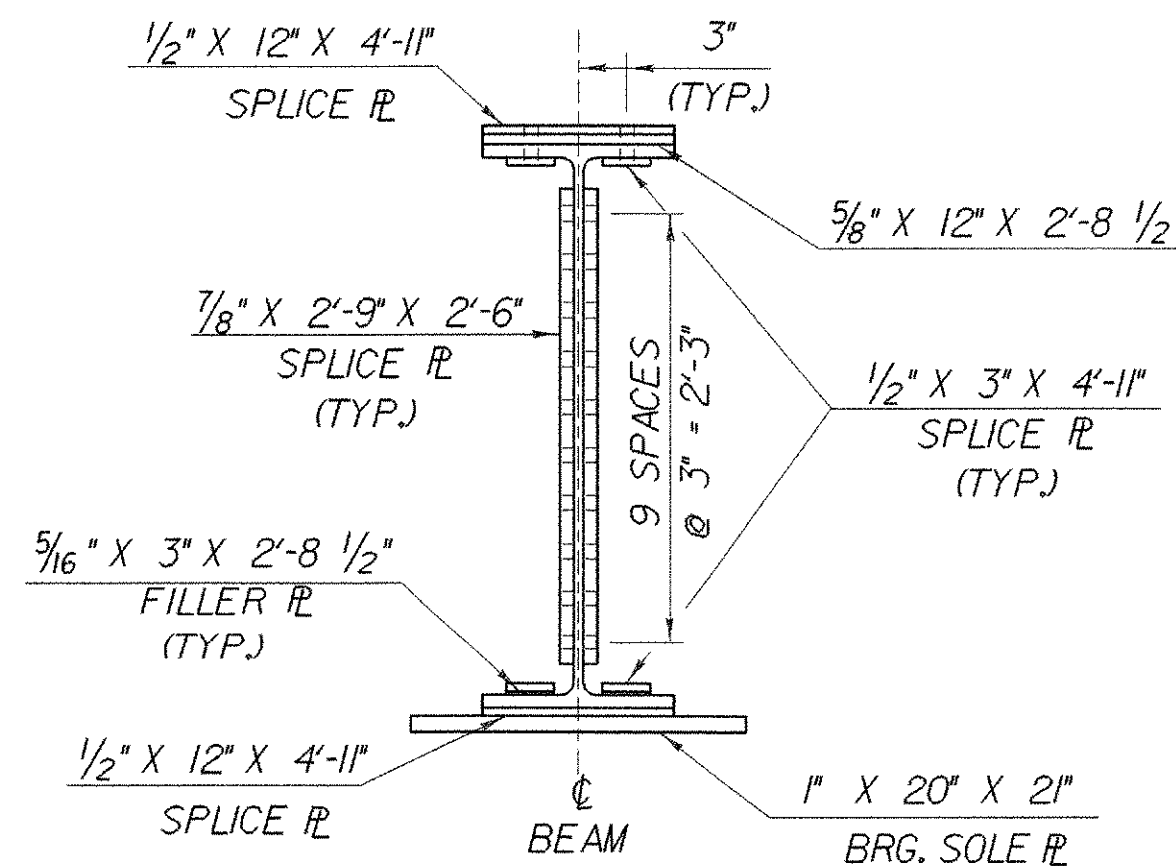
**PLAN BOTTOM FLANGE @ PIER NO. 1**  
 (PIER NO. 2 REVERSE IMAGE)  
 SCALE: 1" = 1'-0"



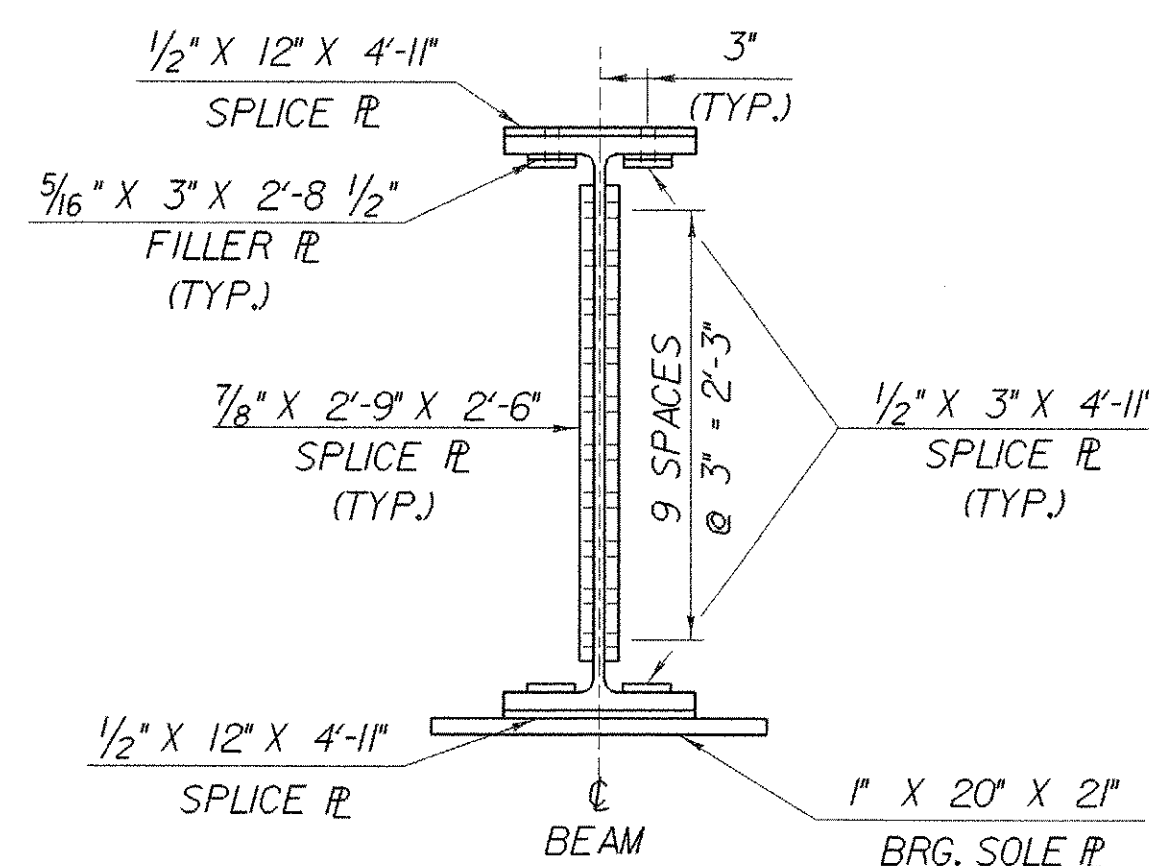
**BEAM ELEVATION @ PIER NO. 1**  
 SCALE: 1" = 1'-0"



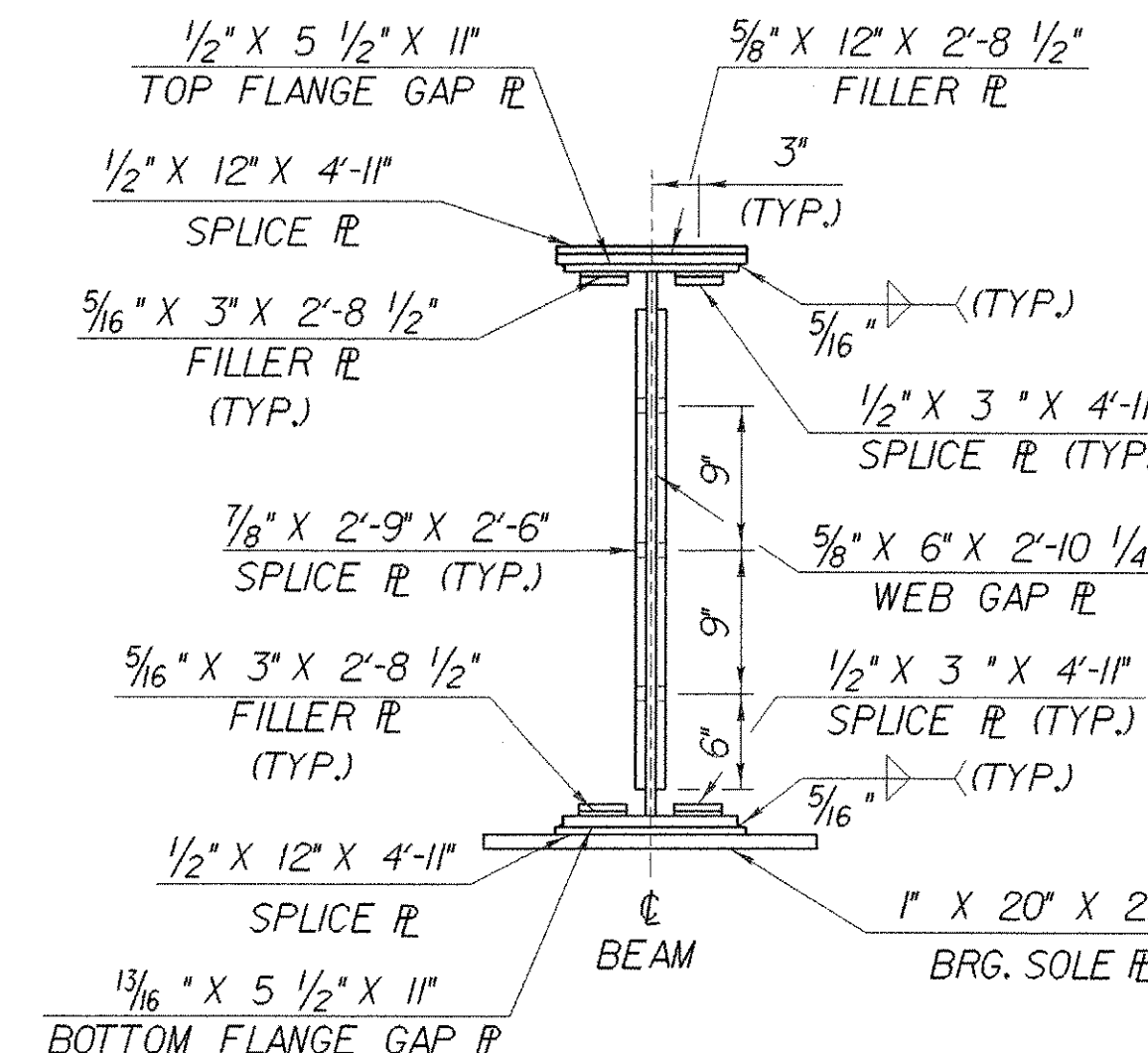
**BEAM ELEVATION @ PIER NO. 2**  
 SCALE: 1" = 1'-0"



**SECTION A-A**  
 SCALE: 1" = 1'-0"



**SECTION B-B**  
 SCALE: 1" = 1'-0"



**SECTION @ C SPLICER**  
 SCALE: 1" = 1'-0"

- NOTES:
1. ALL NEW STEEL FOR SPLICE ASSEMBLY SHALL CONFORM TO AASHTO M270 GR 50 PAINTED.
  2. ALL NEW STEEL FOR SPLICE PLATES, EXCLUDING FILLER PLATES, SHALL BE CHARNY V-NOTCH TESTED.

<b>STATE OF VERMONT AGENCY OF TRANSPORTATION</b>	
Town of <b>FAIRFAX-FAIRFIELD-ST. ALBANS</b>	Bridge No. 88S
Highway No. <b>1-89</b>	Log Sta. Surv. Sta.
<b>1-89 OVER ST. ALBANS SOUTH STATE HIGHWAY (EXIT 19) 88S STRUCTURAL STEEL SPLICE DETAILS</b>	
Designed By <b>M. LOZIER</b>	Drawn By <b>K. CHISHOLM</b>
Checked By <b>M. LOZIER</b> Date <b>2/00</b>	Bridge Design Supervisor <b>R. R. WHITCOMB</b> Date <b>2/00</b>
PROJECT <b>FAIRFAX-FAIRFIELD-ST. ALBANS</b>	PROJECT NO. <b>1M 089 - 3 (27)</b>
I.G.C. Info. <b>96d056Structures\sa056fr2.dgn</b>	sa056gd2j
Bridge Sheet No. <b>BR410</b>	Sheet <b>162</b> of <b>370</b>