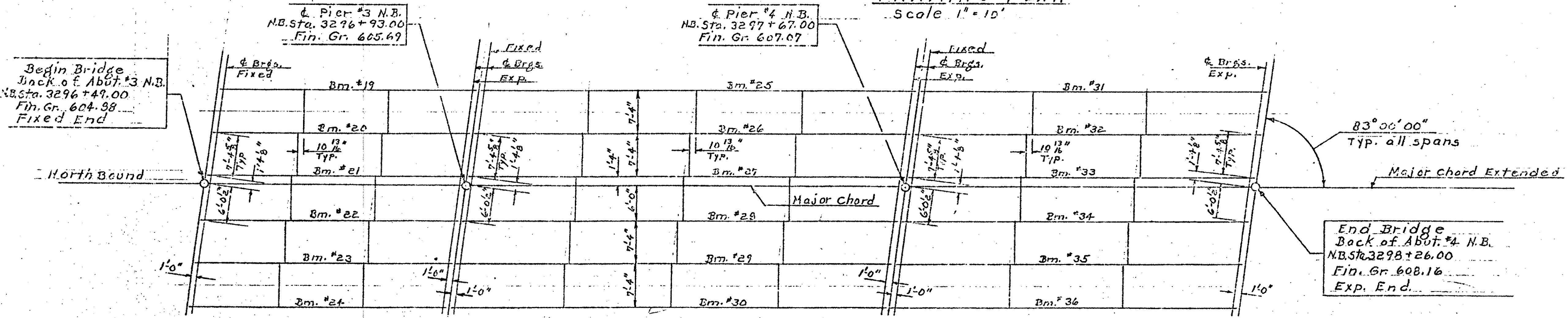
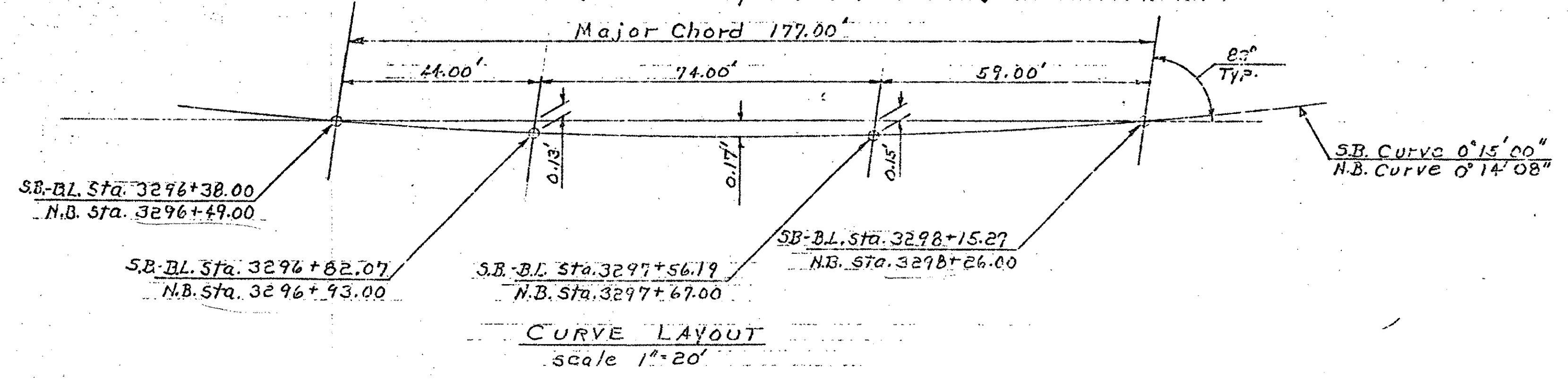


**FRAMING PLAN**  
Scale 1" = 10'



Note: Both bridges identically framed. For framing information not shown in Northbound Bridge, see Southbound Bridge. All beams are to be parallel to the Major Chord.



ITEM NO.	ITEM	UNIT	NET	TOTAL	REMARKS
	CHAM. EXCAV. OF EARTH	C.Y.			
	CHAM. EXCAV. OF ROCK	C.Y.			
	UNCLASS. CHAM. EXCAV.	C.Y.			
	STRUCT. EXCAV.	C.Y.			
	CONC. CLASS A (MOD.)	C.Y.			
	CONC. CLASS B (MOD.)	C.Y.			
	ROAD. SIFTS	LS.			
	ALUMINUM ASP. COATING	S.Y.			
	TREATED TIMBER PILING	L.F.			
	SHIELDS FOR STEEL PILING	EA.			
	STEEL PILING	L.F.			
	UNGRADED TIMBER PILING	L.F.			

- Notes**
- For superstructure framing details see the following list of standards.  
 std. Structures SCB-37.25-65  
 " " SCB-D1-65  
 " " SCB-D2-65  
 " " SCB-D3-65  
 " " SCB-D5-65  
 " " SCB-D7-65  
 " " SCB-D8-65  
 " " SCB-D9-65 Detail "A"
  - All structural steel shall be A.S.T.M. Designation A-36-62T except Expansion plates at piers which shall be A.S.T.M. Designation A-242 as noted on Std. Structures SCB-D3-65, Detail "A"

**BRIDGE SHEET BR240**  
**REFERENCE SHEET 2 OF 9**  
**SHEET 118 OF 370**

Stage 1 Construction  
CONTRACT 2

STATE OF MISSISSIPPI  
DEPARTMENT OF HIGHWAYS  
Georgia - Fairfax -  
TOWN OF FAIRFIELD - ST. ALBENS  
ROUTE NO. 189, LOC. 574  
Framing Plan  
189 over VT. 104  
SCALE AS NOTED  
DRAWN BY: \_\_\_\_\_  
CHECKED BY: RAO  
PROJECT NO. I 89-5(35) Cont. 2  
SHEET 168 OF 467  
BR-107