

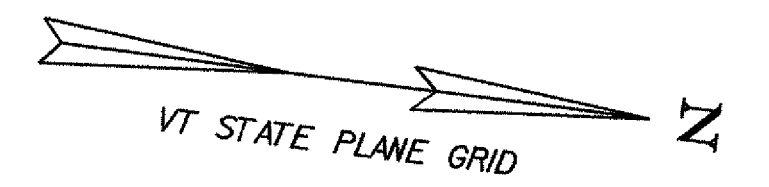
SOUTHBOUND: 8' UNDERDRAIN (MODIFICATION #1)  
 ⑥ 3308+00 RT - 3312+94 RT W/FB @ 3312+94 RT  
 ⑧ 3313+00 LT - 3317+00 LT

SOUTHBOUND: 8' UNDERDRAIN (MODIFICATION #2)  
 ⑦ 3308+00 RT - 3312+94 RT W/FB @ 3312+94 RT  
 ⑨ 3313+00 LT - 3317+00 LT

SOUTHBOUND: 8' UNDERDRAIN CARRIER PIPE  
 ⑥A 3308+00 RT W/FB @ 3308+00 RT  
 ⑧A 3313+00 LT W/FB @ 3313+00 LT

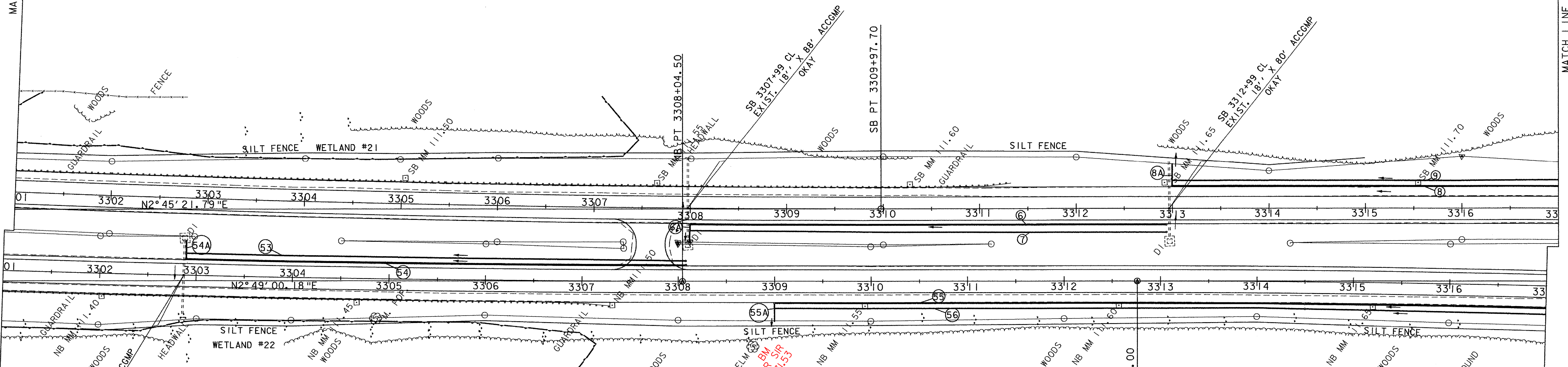
REMOVAL AND DISPOSAL  
 OF GUARD RAIL  
 (SOUTHBOUND)  
 3301+00 LT - 3311+33 LT  
 REMOVAL OF EXISTING FENCE (MOD.)  
 STA. 3301+00 SB LT - STA. 3303+00 SB LT  
 WOVEN WIRE FENCE W/STEEL POSTS  
 STA. 3301+00 SB LT - STA. 3303+00 SB LT

STEEL BEAM GUARD RAIL  
 (SOUTHBOUND)  
 3301+00 LT - 3311+01.8 LT



MATCH LINE SB STA. 3301+00

MATCH LINE SB STA. 3317+00



MATCH LINE NB STA. 3301+00

MATCH LINE NB STA. 3317+00

REMOVAL OF EXISTING FENCE (MOD.)  
 STA. 3312+10 NB RT - STA. 3314+00 NB RT  
 WOVEN WIRE FENCE W/STEEL POSTS  
 STA. 3312+10 NB RT - STA. 3314+00 NB RT  
 REMOVAL AND DISPOSAL  
 OF GUARD RAIL  
 (NORTHBOUND)  
 3301+00 RT - 3307+29 RT  
 STEEL BEAM GUARD RAIL  
 (NORTHBOUND)  
 3301+00 RT - 3307+18.9 RT

CONSTRUCT U-TURN  
 (NORTHBOUND)  
 3307+71 LT

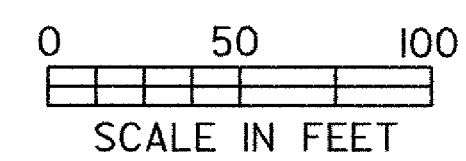
NORTHBOUND: 8' UNDERDRAIN (MODIFICATION #1)  
 ⑤3 3302+90 LT - 3308+08 LT W/FB @ 3308+08 LT  
 3308+16 3308+18  
 ⑤5 3309+00 RT - 3317+00 W/FB @ 3314+50 RT  
 3308+85

NORTHBOUND: 8' UNDERDRAIN (MODIFICATION #2)  
 ⑤4 3302+90 LT - 3308+08 LT W/FB @ 3308+08 LT  
 16 16  
 ⑤6 3309+00 RT - 3317+00 W/FB @ 3314+50 RT  
 3308+50

NORTHBOUND: 8' UNDERDRAIN CARRIER PIPE  
 ⑤4A 3302+92 LT W/FB @ 3302+92 LT  
 ⑤5A 3309+92 RT W/FB @ 3309+00 RT

SB & NB 3301+00 - 3317+00

PROJECT:	FAIRFAX - FAIRFIELD - ST. ALBANS	PROJECT NO.:	IM 089-3(27)
DESIGN FILE NAME:	/87A007B/DESIGN/DA007NUI.DGN	PLOT DATE:	23-AUG-2000
IPARM FILE NAME:	DA007L03	SURVEY DATE:	6/98
SURVEYED BY:	ORVIS	DRAWN BY:	SQUAD B
SQUAD LEADER:	DELLA SANTA	SHEET:	53 OF 370



DATUM	
VERTICAL	NAVD88
HORIZONTAL	NAD83(92)