

SOUTHBOUND: 8" UNDERDRAIN (MODIFICATION #1)

- ② 3285+00 LT - 3288+00 RT
- ③ 3286+00 RT - 3291+93 RT W/FB @ 3286+00 RT

SOUTHBOUND: 8" UNDERDRAIN CARRIER PIPE

- ②A 3288+00 LT W/FB @ 3288+00 LT
- ③A 3291+93 RT W/FB @ 3291+93 RT
- ⑤A 3295+00 RT W/FB @ 3295+00 RT

WOVEN WIRE FENCE W/STEEL POSTS

STA. 3288+50 SB LT - STA. 3297+00 SB LT
 STA. 3298+00 SB LT - STA. 3301+00 SB LT

REMOVAL OF EXISTING FENCE (MOD.)

STA. 3288+50 SB LT - STA. 3297+00 SB LT
 STA. 3298+00 SB LT - STA. 3301+00 SB LT

SOUTHBOUND: 8" UNDERDRAIN (MODIFICATION #2)

- ① 3285+00 LT - 3288+00 LT
- ④ 3286+00 RT - 3291+93 RT W/FB @ 3286+00 RT
- ⑤ 3295+00 RT - 3296+20 RT W/FB @ 3296+20 RT

REMOVAL AND DISPOSAL OF GUARD RAIL (SOUTHBOUND)

3287+68 LT - 3296+30 LT
 3298+33 LT - 3301+00 LT
 3295+12 RT - 3296+22 RT
 3298+25 RT - 3300+59 RT

STEEL BEAM GUARD RAIL (SOUTHBOUND)

3287+58.8 LT - 3296+33.8 LT
 3298+01.8 LT - 3301+00 LT
 3295+01.9 RT - 3296+26.9 RT
 3297+96.6 RT - 3299+46.6 RT

BRIDGE RAILING - NETC 2 RAIL (SOUTHBOUND)

3296+63.2 LT - 3297+72.3 LT
 3296+56.3 RT - 3297+67.2 RT

GUARD RAIL APPROACH SECTION, NETC 2 RAIL (SOUTHBOUND)

3296+33.8 LT - 3296+63.2 LT
 3296+26.9 RT - 3296+56.3 RT
 3297+72.3 LT - 3298+01.8 LT
 3297+67.2 RT - 3297+96.6 RT

TREATED TIMBER CURB (SOUTHBOUND)

3285+00 LT - 3296+25 LT

SB CURVE #2 DATA

$\Delta = 5^{\circ}28' - 06.84''$ LT.
 $D = 0^{\circ}15'$
 $R = 22918.32'$
 $T = 1094.54'$
 $L = 2187.43'$
 $E = 26.12'$
 BANK = 0.021 FT / FT

NB CURVE #1 DATA

$\Delta = 4^{\circ}25' - 35.96''$ LT.
 $D = 0^{\circ}15'$
 $R = 22918.32'$
 $T = 885.77'$
 $L = 1770.66'$
 $E = 17.11'$
 BANK = 0.021 FT / FT

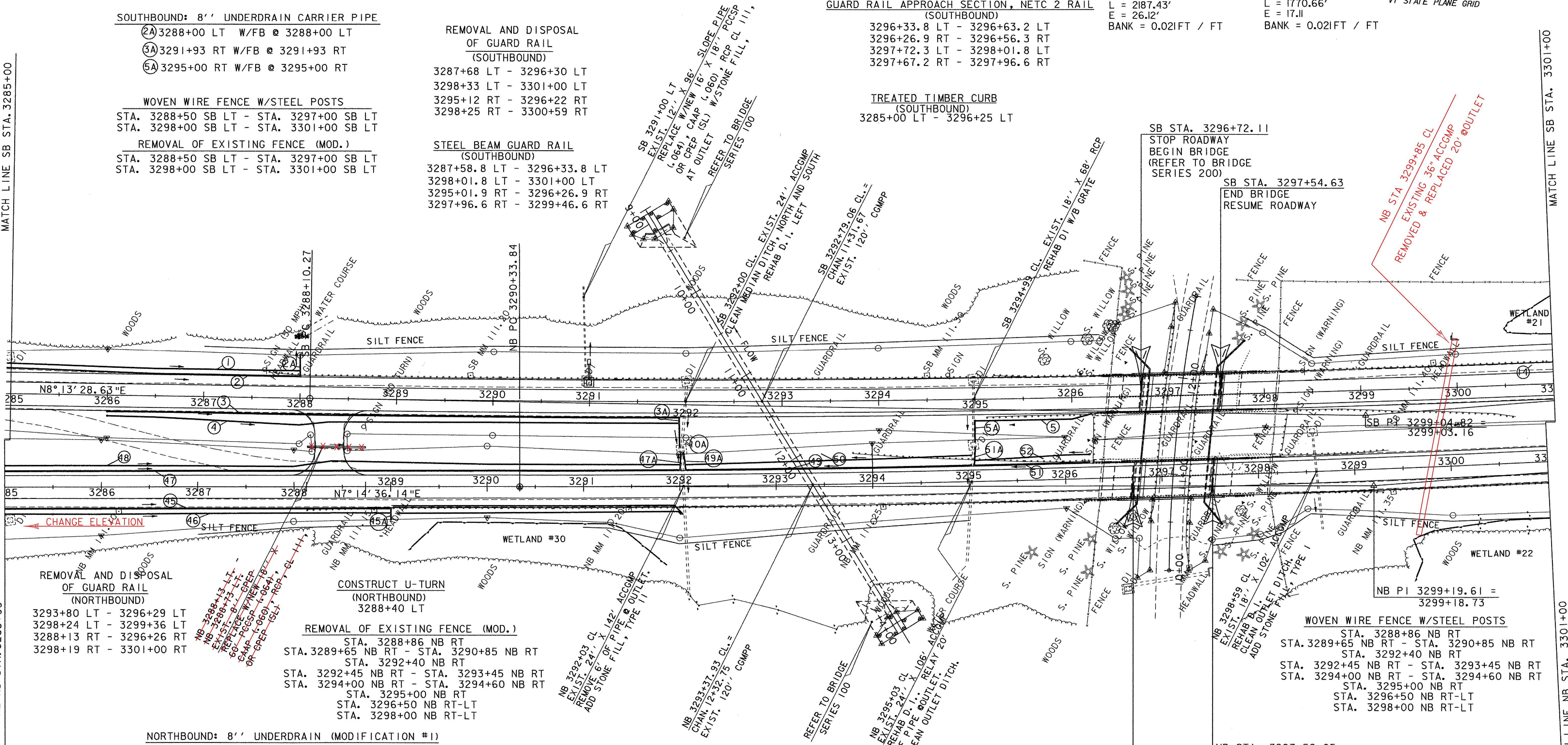


MATCH LINE SB STA. 3285+00

MATCH LINE NB STA. 3285+00

MATCH LINE SB STA. 3301+00

MATCH LINE NB STA. 3301+00



REMOVAL AND DISPOSAL OF GUARD RAIL (NORTHBOUND)
 3293+80 LT - 3296+29 LT
 3298+24 LT - 3299+36 LT
 3288+13 RT - 3296+26 RT
 3298+19 RT - 3301+00 RT

CONSTRUCT U-TURN (NORTHBOUND)
 3288+40 LT

REMOVAL OF EXISTING FENCE (MOD.)
 STA. 3288+86 NB RT
 STA. 3289+65 NB RT - STA. 3290+85 NB RT
 STA. 3292+40 NB RT
 STA. 3292+45 NB RT - STA. 3293+45 NB RT
 STA. 3294+00 NB RT - STA. 3294+60 NB RT
 STA. 3295+00 NB RT
 STA. 3296+50 NB RT-LT
 STA. 3298+00 NB RT-LT

NORTHBOUND: 8" UNDERDRAIN (MODIFICATION #1)

- ④5 3285+00 RT - 3289+00 RT W/FB @ 3285+50 RT
- ④7 3285+00 LT - 3292+00 LT W/FB @ 3285+00 LT & 3288+50 LT
- ④9 3292+07 LT - 3295+03 LT W/FB @ 3295+03 LT
- ⑤1 3295+06 LT - 3296+25 LT W/FB @ 3296+25 LT

NORTHBOUND: 8" UNDERDRAIN (MODIFICATION #2)

- ④6 3285+00 RT - 3289+00 RT W/FB @ 3285+50 RT
- ④8 3285+00 LT - 3292+00 LT W/FB @ 3285+00 LT & 3288+50 LT
- ⑤0 3292+07 LT - 3295+03 LT W/FB @ 3295+03 LT
- ⑤2 3295+06 LT - 3296+25 LT W/FB @ 3296+25 LT

NORTHBOUND: 8" UNDERDRAIN CARRIER PIPE

- ④5A 3289+00 RT W/FB @ 3289+00 RT
- ④7A 3292+00 LT W/FB @ 3292+00 LT
- ④9A 3292+07 LT W/FB @ 3292+07 LT
- ⑤1A 3295+06 LT W/FB @ 3295+06 LT

BRIDGE RAILING - NETC 2 RAIL (NORTHBOUND)

3296+58.5 LT - 3297+70.6 LT
 3296+52.6 RT - 3297+64.5 RT

STEEL BEAM GUARD RAIL (NORTHBOUND)

3294+04.1 LT - 3296+29.1 LT
 3298+00.0 LT - 3299+50.0 LT
 3288+98.2 RT - 3296+23.2 RT
 3297+93.9 RT - 3301+00 RT

GUARD RAIL APPROACH SECTION, NETC 2 RAIL (NORTHBOUND)

3296+29.1 LT - 3296+58.5 LT
 3296+23.2 RT - 3296+52.6 RT
 3297+70.6 LT - 3298+00.0 LT
 3297+64.5 RT - 3297+93.9 RT

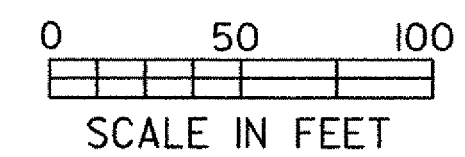
NB STA. 3296+70.13
 STOP ROADWAY
 BEGIN BRIDGE
 (REFER TO BRIDGE SERIES 200)

NB STA. 3297+52.65
 END BRIDGE
 RESUME ROADWAY

STEEL BRACE FOR WOVEN WIRE FENCE
 STA. 3292+00 NB RT

SB & NB 3285+00 - 3301+00

DATUM	
VERTICAL	NAVD88
HORIZONTAL	NAD83(92)



PROJECT:	FAIRFAX - FAIRFIELD - ST. ALBANS	PROJECT NO.:	IM 089-3(27)
DESIGN FILE NAME:	/87A007B/DESIGN/DA007NUI.DGN	PLOT DATE:	23-AUG-2000
IPARM FILE NAME:	DA007L02	SURVEY DATE:	6/98
SURVEYED BY:	ORVIS	DRAWN BY:	SQUAD B
SQUAD LEADER:	DELLA SANTA	SHEET:	51 OF 370