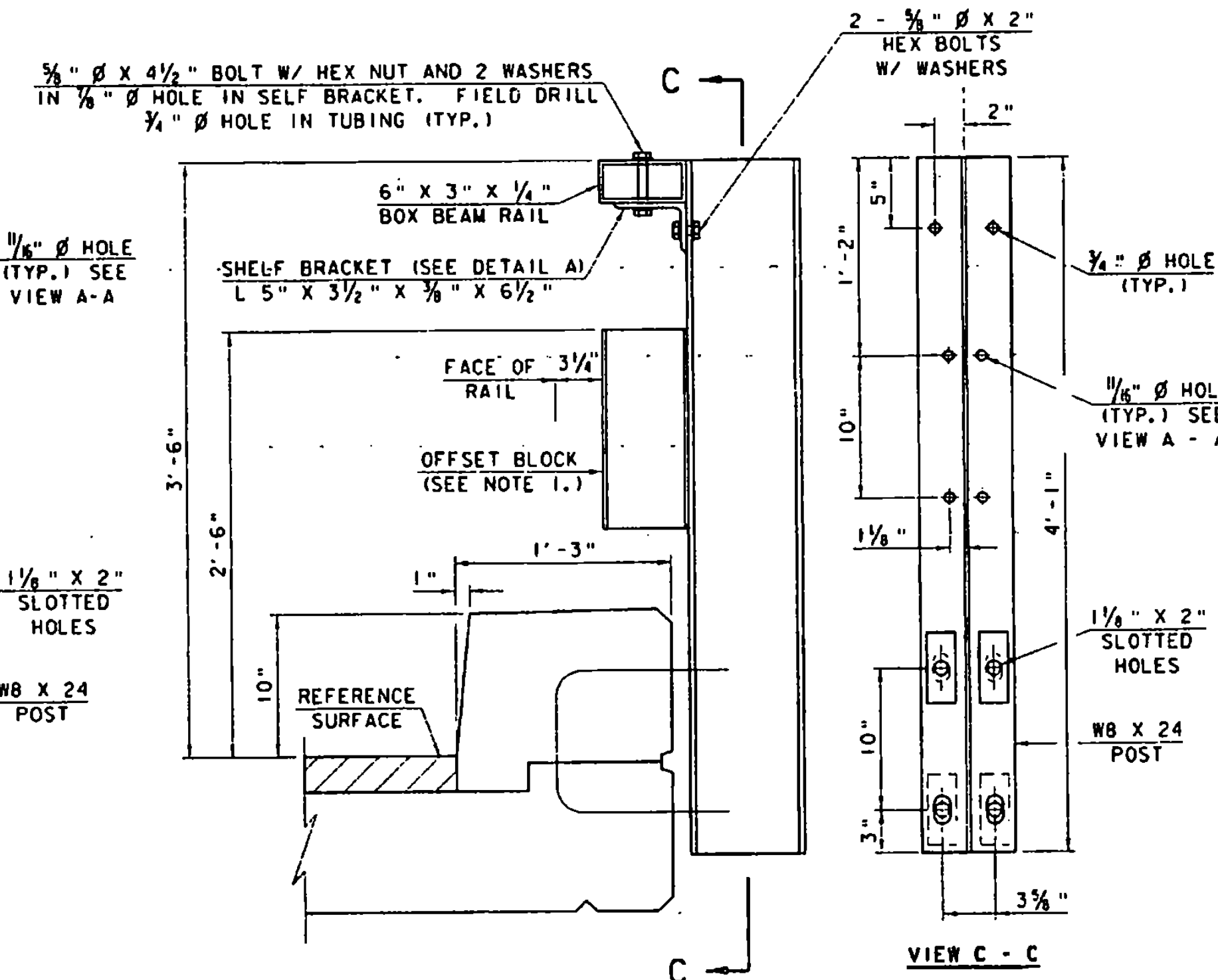
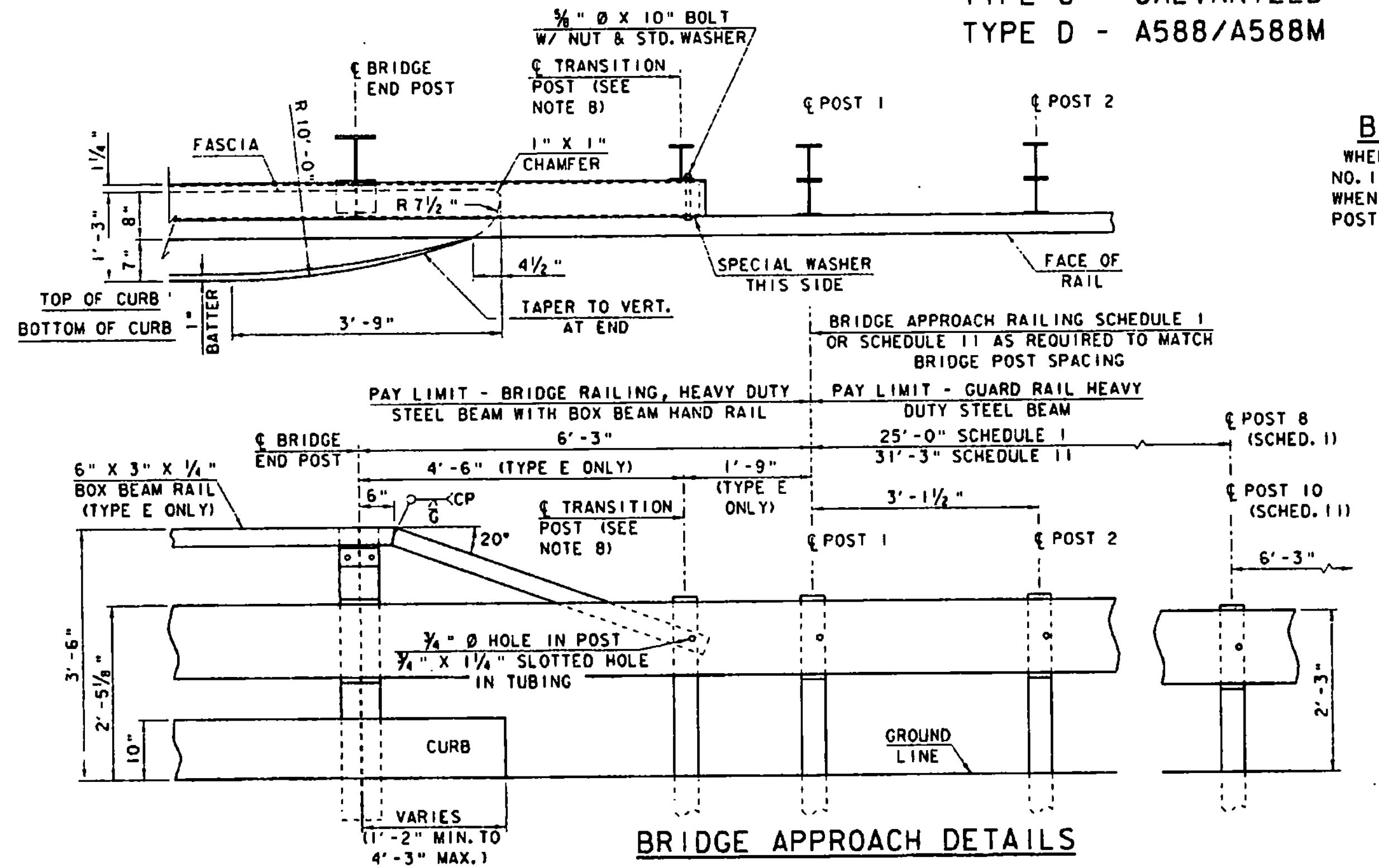


FASCIA MOUNTED STEEL POST
 TYPE A - GALVANIZED
 TYPE B - A588/A588M



FASCIA MOUNTED STEEL POST WITH BOX BEAM HAND RAIL
 TYPE E - GALVANIZED

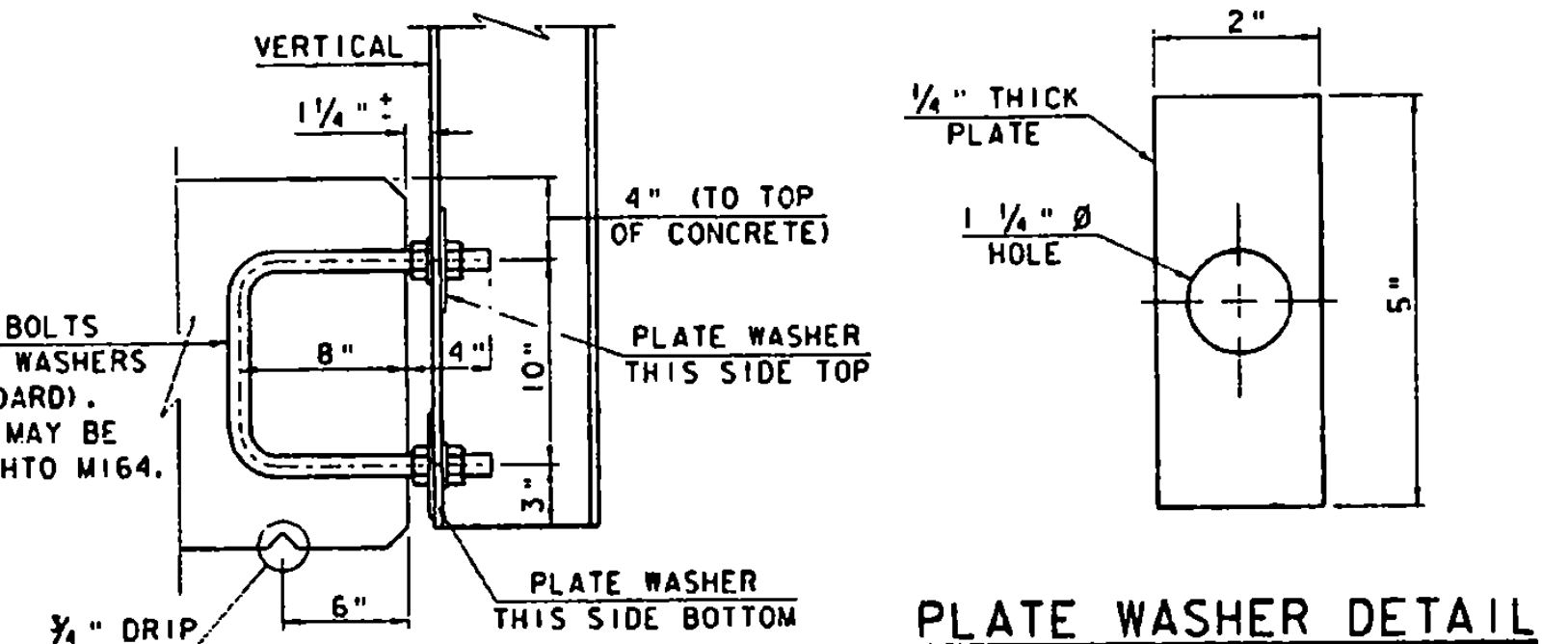


BRIDGE APPROACH RAILING
 WHEN A RAIL PANEL SPLICE OCCURS AT POST NO. 1, USE SCHEDULE I FOR APPROACH RAILING. WHEN A RAIL PANEL SPLICE OCCURS AT BRIDGE END POST USE, SCHEDULE II FOR APPROACH RAILING.

SCHEDULE I		
POST NO.	SPACING	PAYMENT FACTOR
1	3'-1 1/2"	
2	3'-1 1/2"	
3	3'-1 1/2"	1.4 X 12'-6"
4	3'-1 1/2"	
5	3'-1 1/2"	
6	4'-2"	
7	4'-2"	1.2 X 12'-6"
8	4'-2"	
9	6'-3" (TYP.)	1.0 (TYP.)

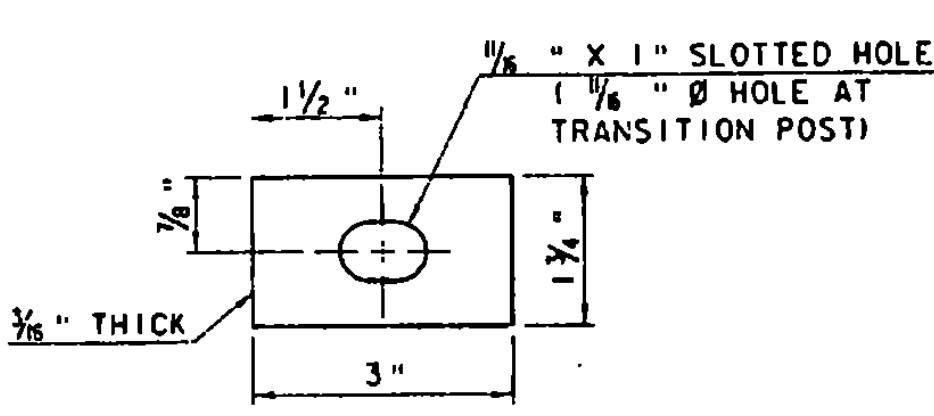
SCHEDULE II		
POST NO.	SPACING	PAYMENT FACTOR
1	3'-1 1/2"	
2	3'-1 1/2"	
3	3'-1 1/2"	1.4 X 18'-9"
4	3'-1 1/2"	
5	3'-1 1/2"	
6	3'-1 1/2"	
7	4'-2"	
8	4'-2"	1.2 X 12'-6"
9	4'-2"	
10	4'-2"	
11	6'-3" (TYP.)	1.0 (TYP.)

- NOTES**
- SEE STANDARD DRAWING G-1 & G-1d FOR ADDITIONAL DETAILS OF STEEL BEAM GUARD RAIL AND STANDARD SB-R6-82 FOR ADDITIONAL DETAILS OF BOX BEAM RAIL.
 - ANCHOR BOLTS, NUTS, AND WASHERS SHALL BE GALVANIZED AND CONFORM TO SECTION 714.07.
 - BRIDGE RAIL TYPES A, C & E: HEAVY DUTY STEEL BEAM RAIL SHALL BE AASHTO M180, CLASS B-TYPE 11. POST AND BRACKETS, AS WELL AS PLATE AND SPECIAL WASHERS, SHALL BE AASHTO M223/M223M STEEL. BOLTS SHALL BE ASTM A307. ALL MATERIAL SHALL BE GALVANIZED AFTER FABRICATION TO AASHTO M111 OR M232 (HARDWARE).
 - BRIDGE RAIL TYPE B & D: HEAVY DUTY STEEL BEAM RAIL SHALL BE AASHTO M180, CLASS B-TYPE 4. POSTS AND BRACKETS, AS WELL AS PLATE AND SPECIAL WASHERS, SHALL BE AASHTO M222/M222M STEEL. BOLTS SHALL BE AASHTO M164 TYPE 111.
 - ALL POSTS SHALL BE SET NORMAL TO GRADE.
 - BRIDGE APPROACH RAIL HEIGHT SHALL BE TRANSITIONED TO NORMAL ROADWAY HEIGHT IN 25 FEET.
 - APPROACH RAILING SHALL BE HEAVY DUTY STEEL BEAM FOR 50 FEET FROM THE END OF THE BRIDGE.
 - FOR THE TYPE A, B, C, OR D BRIDGE RAILING, THE TRANSITION POST SHALL HAVE AN OFFSET BLOCK AND BE LOCATED AS CLOSE AS PRACTICAL TO THE MID-POINT BETWEEN THE BRIDGE END POST AND APPROACH RAIL POST 1.
 - SPLICES SHALL LAP IN DIRECTION OF TRAFFIC FLOW.
 - SEE STANDARD SHEET G-1 FOR DELINEATOR DETAILS AND PLACEMENT.
 - ERECT DELINEATOR ON EVERY FIFTH POST OR APPROXIMATELY 30 FEET APART. PAYMENT SHALL BE SUBSIDIARY TO OTHER ITEMS.
 - THE DROP-WEIGHT TEAR TEST IN SECTION 732 SHALL NOT APPLY TO THE STRUCTURAL TUBING ON THIS STANDARD.

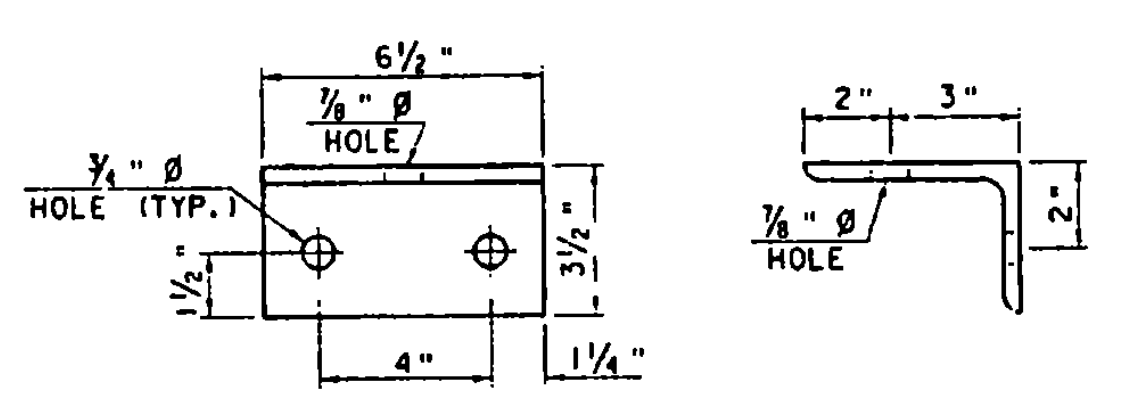


ANCHORAGE DETAIL

PLATE WASHER DETAIL



SPECIAL WASHER DETAIL



DETAIL A - SHELF BRACKET

REVISIONS AND CORRECTIONS

REVISION: DELINEATORS ADDED D.A.R 6-18-82
 REVISION: BOLTS THRU BOX BEAM RAIL R.S.H. 12-13-84
 REVISION: CHANGED BOLT HOLE THROUGH SELF BRACKET R.S.H. 12-13-84
 REVISION: CLARIFIED BLOCK BOLT INSTALLATION R.P.G. 11-13-91
 REVISION: ADDED SPECIAL WASHER AND CHANGED STEEL REFERENCE TO AASHTO M223/M223M (NOTE 3.) STEEL POSTS AND OFFSET BLOCKS SHOWN FOR APPROACH RAIL. J.H.W. 1-6-95

APPROVED *1/6/95* DATE
[Signature]
 DIRECTOR OF CONSTRUCTION AND MAINTENANCE
[Signature]
 DIRECTOR OF ENGINEERING
[Signature]
 STRUCTURES ENGINEER

BRIDGE RAILING HEAVY DUTY STEEL BEAM (TYPE A, TYPE B, TYPE C, AND TYPE D)
BRIDGE RAILING HEAVY DUTY STEEL BEAM WITH BOX BEAM HAND RAIL (TYPE E)



STANDARD SB-R6-82