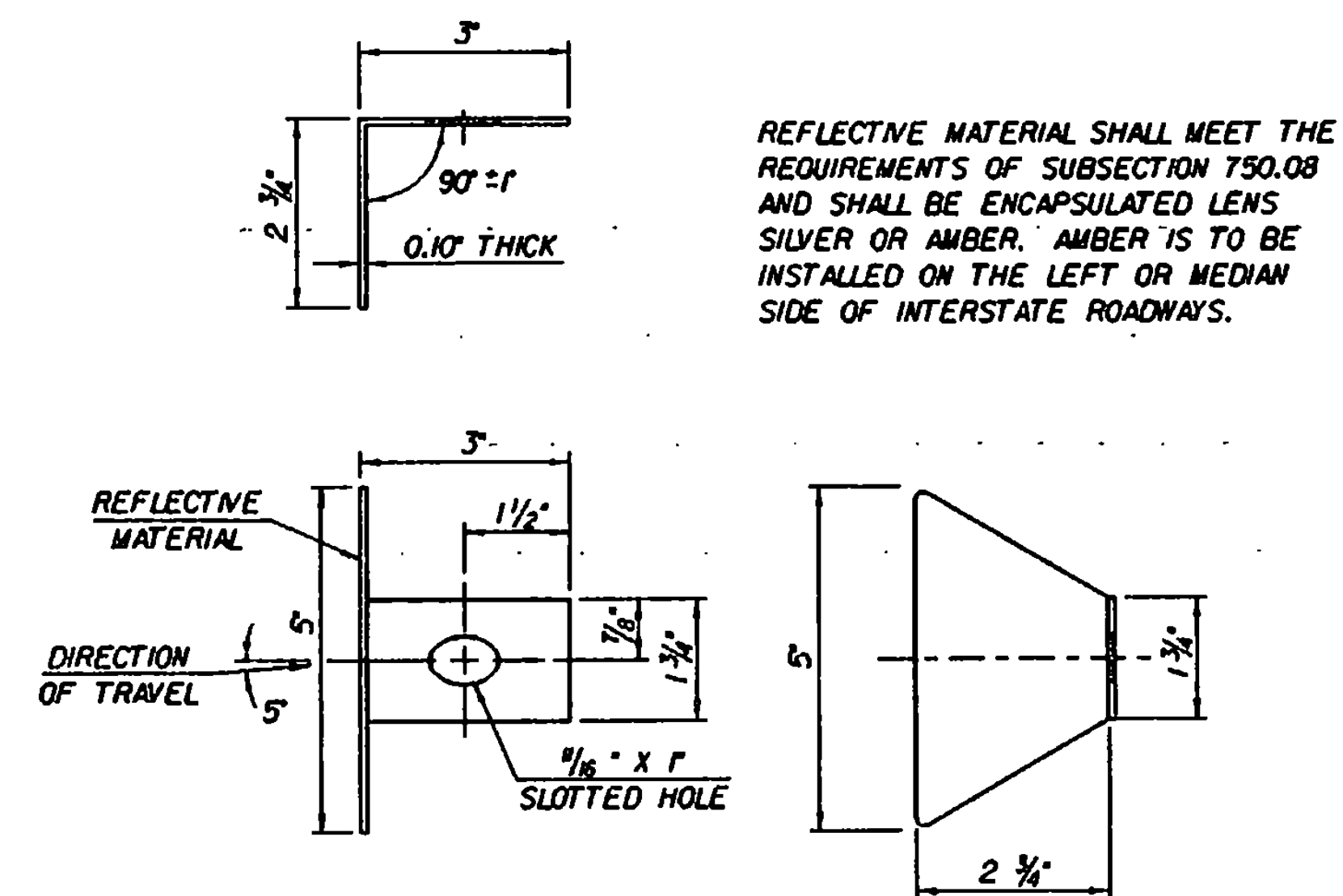
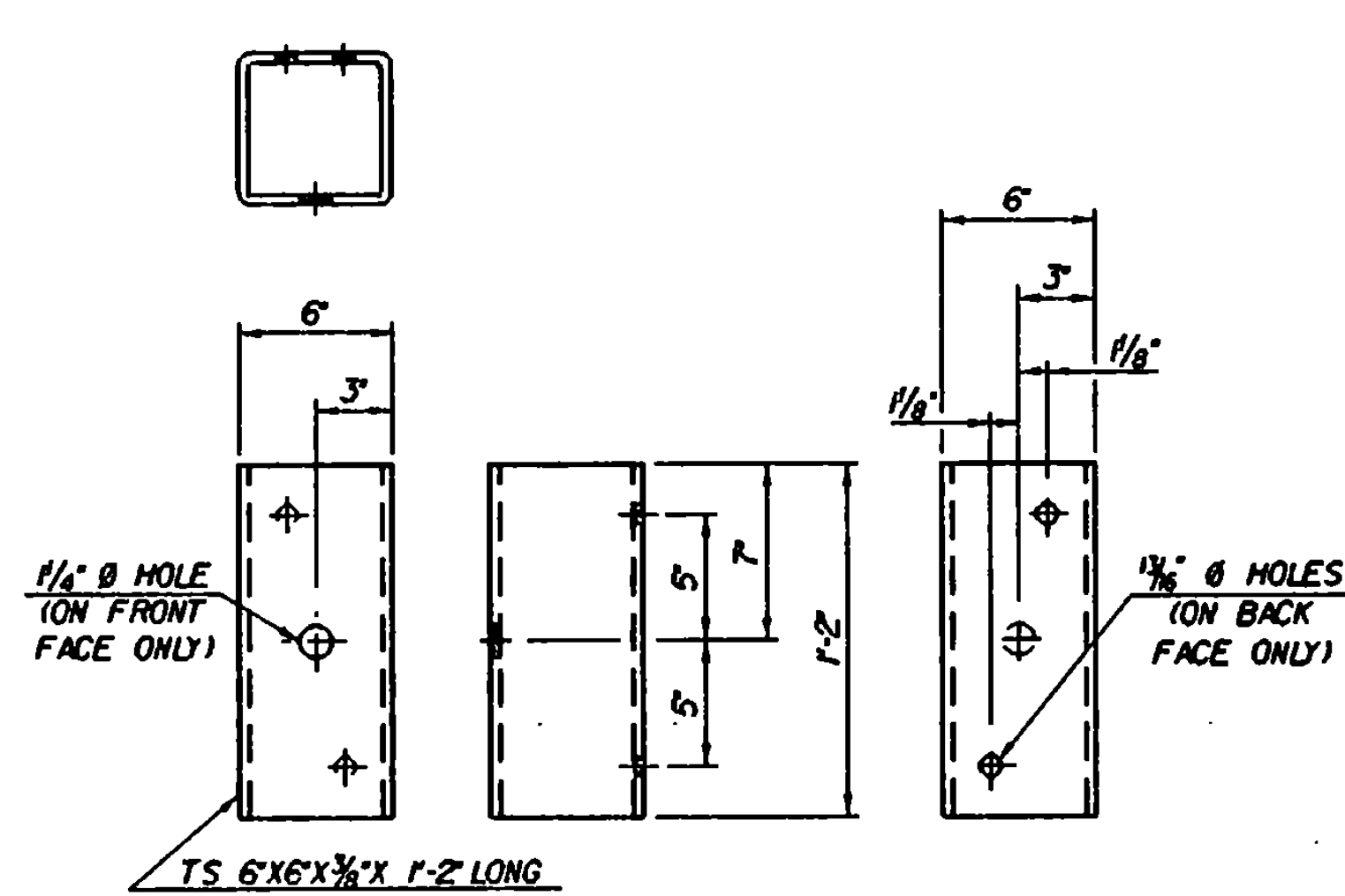


CONNECTION/TRANSITION DETAILS AT POST NO.1
SCALE: 3/4" = 1'-0"



DELINEATOR DETAILS
THIS REFLECTORIZED ALUMINUM DELINEATOR IS TO BE ERRECTED EVERY 30 FEET OR CLOSEST POST. DELINEATOR SHALL MEET SPECIFICATION REQUIREMENTS FOR ASTM B209 ALLOY 5052 - H32.



STRUCTURAL TUBING OFFSET BLOCK DETAILS
OCCURS AT POST NO. 1 WHEN USING APPROACH RAIL UTILIZING STEEL POSTS!

BOX BEAM BRIDGE RAIL NOTES

- BRIDGE RAILING AND GUARD RAIL APPROACH SECTIONS ARE DESIGNED IN ACCORDANCE WITH THE LATEST AASHTO SPECIFICATIONS.
- ALL PLATES, BARS, AND ANGLES SHALL BE ASTM A36 STEEL. UNLESS OTHERWISE SPECIFIED, ALL BOLTS SHALL BE ASTM A307. STRUCTURAL STEEL TUBING SHALL BE ASTM A500 COLD-FORMED GRADE 'B' AS MODIFIED IN SECTION 732.034(c).
- ALL BOX BEAM BRIDGE RAILING, AND COMPONENTS SHALL CONFORM TO SECTION 525 OF THE STANDARD SPECIFICATIONS. ALL OTHER SLEEVES, ANCHOR BOLTS, AND ATTACHMENT HARDWARE SHALL BE A325 STEEL AND GALVANIZED TO ASTM A153 AFTER FABRICATION.
- THE FABRICATOR SHALL SUBMIT SHOP DRAWINGS, INCLUDING WELDING PROCEDURES TO THE STRUCTURES DIVISION, FOR APPROVAL IN ACCORDANCE WITH THE PROVISIONS OF SECTION 506.04 - SHOP DRAWINGS. ALL WELDING SHALL CONFORM WITH SECTION 506.10.
- THE RAIL SYSTEM SHALL BE CONTINUOUS WITH EACH TUBE SECTION ATTACHED TO A MINIMUM OF TWO POSTS. JOINTS SHALL BE SPLICED AS SHOWN, WITH CONNECTIONS LOCATED ONE DIRECTLY ABOVE THE OTHER.
- A BRIDGE RAILING JOINT SPLICE SHALL BE PROVIDED AT EACH SUPERSTRUCTURE EXPANSION JOINT. THE RAIL JOINT OPENING SHALL BE 1 INCH UNLESS OTHERWISE NOTED.
- THE BOX BEAM RAIL SHALL BE SHOP BENT TO MATCH RADIUS LESS THAN 950 FEET.
- DELINEATORS SHALL BE MOUNTED AS SHOWN ON SB-R4A-82. PAYMENT FOR DELINEATORS SHALL BE SUBSIDIARY TO OTHER ITEMS.
- SEE STD. SB-R6-82 FOR POST ANCHORAGE DETAILS WHEN USING FASCIA MOUNTED BRIDGE RAIL POSTS.
- PROCEDURE QUALIFICATION FOR ALL WELDS SHALL BE PERFORMED AND APPROVED PRIOR TO FABRICATION. WELDER QUALIFICATION WILL BE REQUIRED FOR EACH PROCEDURE. PROCEDURE AND WELDER QUALIFICATION ACCEPTANCE SHALL BE APPROVED BY RADIOGRAPHIC TESTING.

APPROACH RAIL NOTES

- REFER TO STANDARD G-1 OR G-1d FOR ADDITIONAL APPROACH RAIL DETAILS.
- ALL POSTS FOR HEAVY DUTY STEEL BEAM GUARD RAIL SHALL BE STEEL, IN ACCORDANCE WITH SECTION 728 'GUARD RAIL, GUIDE POST AND BARRIERS' UNLESS OTHERWISE SPECIFIED IN THE CONTRACT.
- APPROACH RAIL SPLICES SHALL LAP IN DIRECTION OF TRAFFIC FLOW.
- ANCHORAGE CONNECTOR AND ANCHORAGE PLATE SHALL BE ASTM A36 STEEL GALVANIZED TO ASTM A123 AFTER FABRICATION.
- APPROACH RAILING SHALL BE HEAVY DUTY STEEL BEAM FOR EITHER TYPE OF GUARD RAIL APPROACH SECTION.
- ALLOWABLE DIMENSIONAL TOLERANCE FOR BENT SECTIONS IS +/- 1/8 OF AN INCH.
- THE UNIT PRICES BID FOR EITHER TYPE OF GUARD RAIL APPROACH SECTION, SHALL INCLUDE ANCHORAGE CONNECTOR, ANCHORAGE PLATE, HEAVY DUTY STEEL BEAM GUARD RAIL, POSTS, OFFSET BLOCKS, BLOCKING, BOLTS, AND ALL NECESSARY HARDWARE.

BRIDGE RAIL CONNECTION DETAIL SHEET

PROJECT: STATEWIDE GUARDRAIL	PROJECT NO.: IMG GDRL(1)
DESIGN FILE NAME: sqda/95a376/da376.dgn	PLOT DATE: 16-SEP-1996
IPARM FILE NAME: da376qr6.l	SURVEY DATE: n/a
SURVEYED BY: n/a	DRAWN BY: structures
SQUAD LEADER: bt nyquist	SHEET: 28 OF 28

Sheet Number: 28