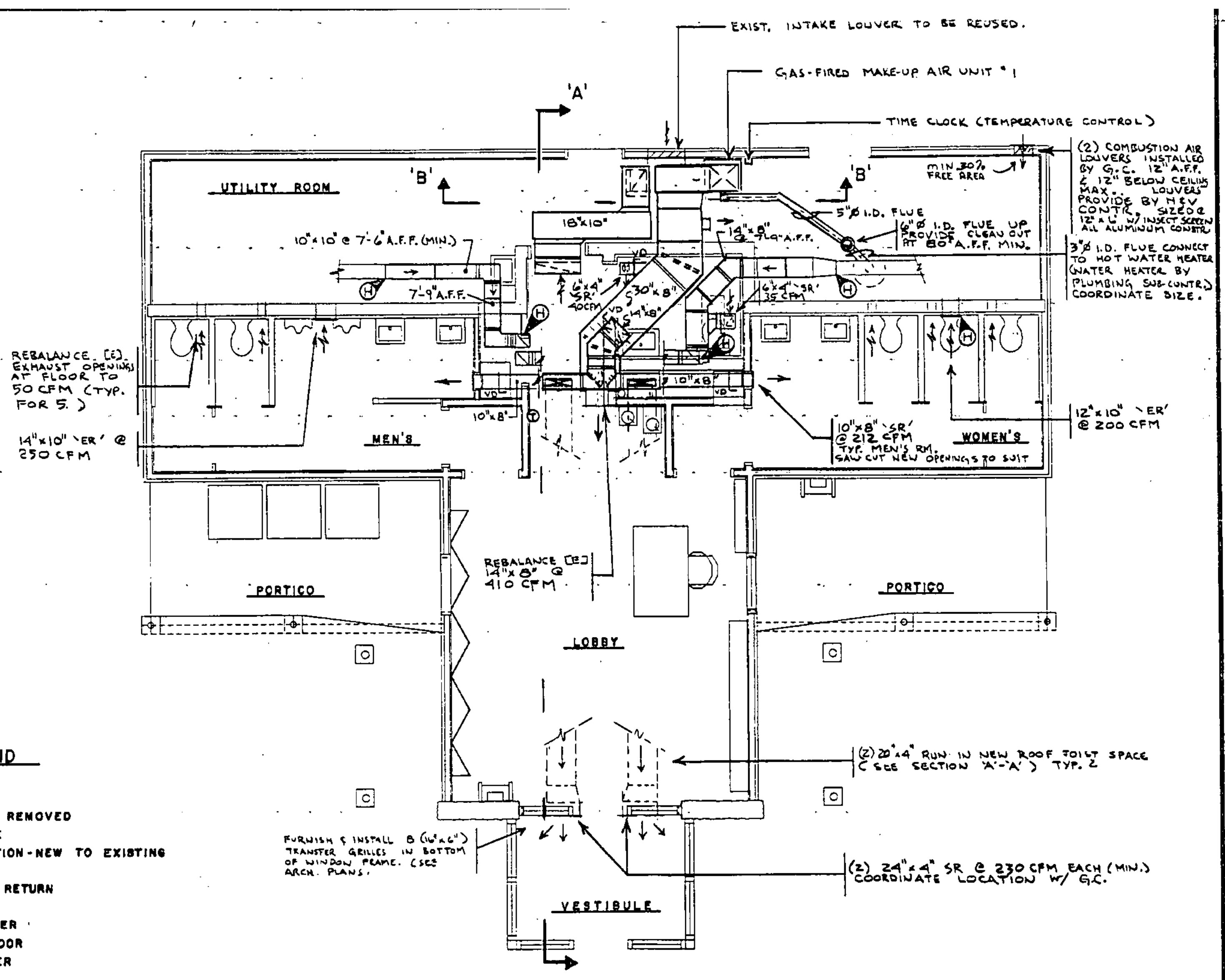


**DEMOLITION
H.&V.-EXISTING FLOOR PLAN**
SCALE: 1/4" = 1'-0"



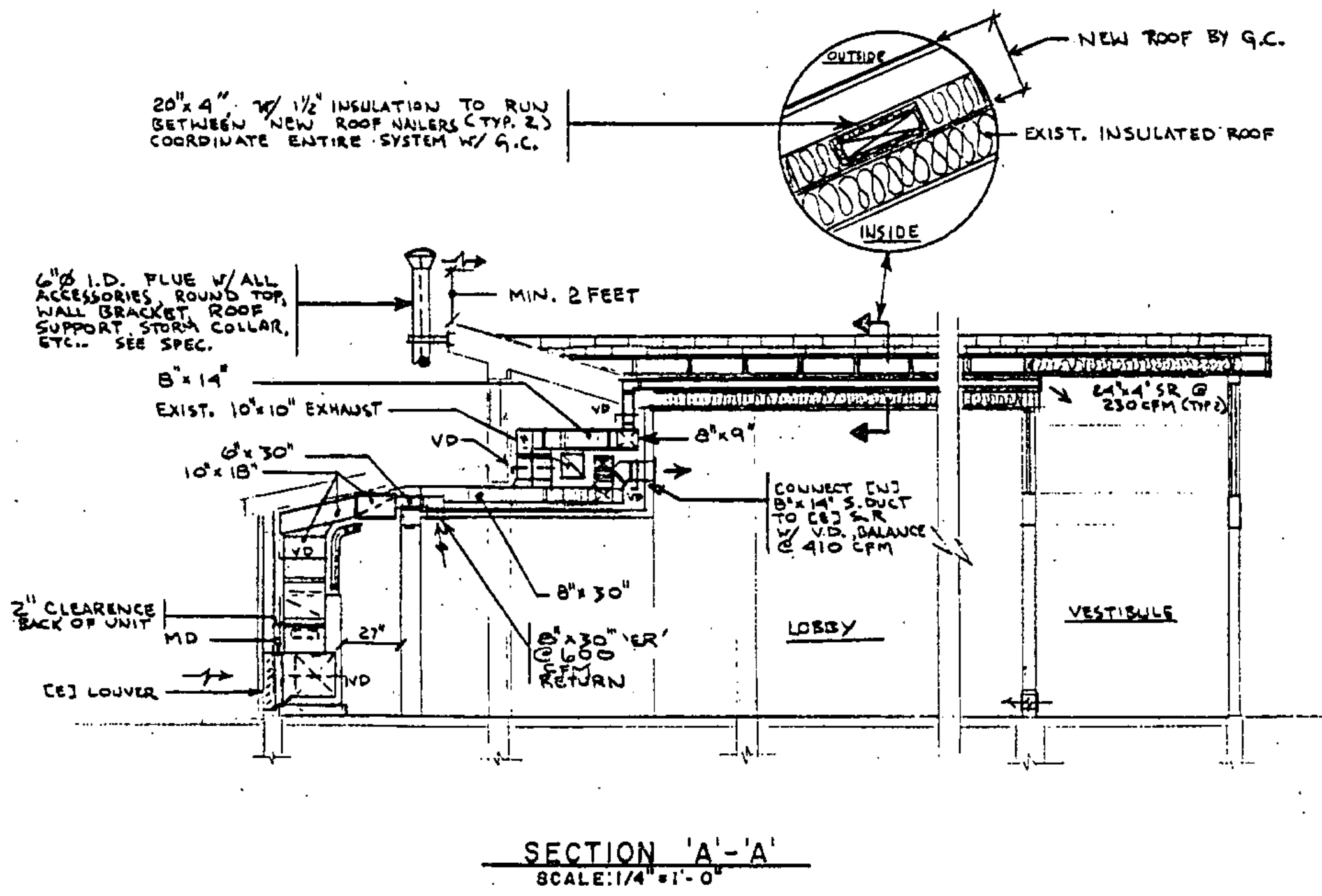
**RENOVATION
H.&V.-FLOOR PLAN**
SCALE: 1/4" = 1'-0"

- H & V LEGEND**
- [N] NEW
 - [E] EXISTING
 - EXISTING TO BE REMOVED
 - TRANSFER GRILLE
 - POINT OF CONNECTION-NEW TO EXISTING
 - AIR SUPPLY
 - AIR EXHAUST OR RETURN
 - VD- VOLUME DAMPER
 - MDD- MOTORIZED DAMPER
 - APF ABOVE FINISH FLOOR
 - ER EXHAUST REGISTER
 - SR SUPPLY REGISTER

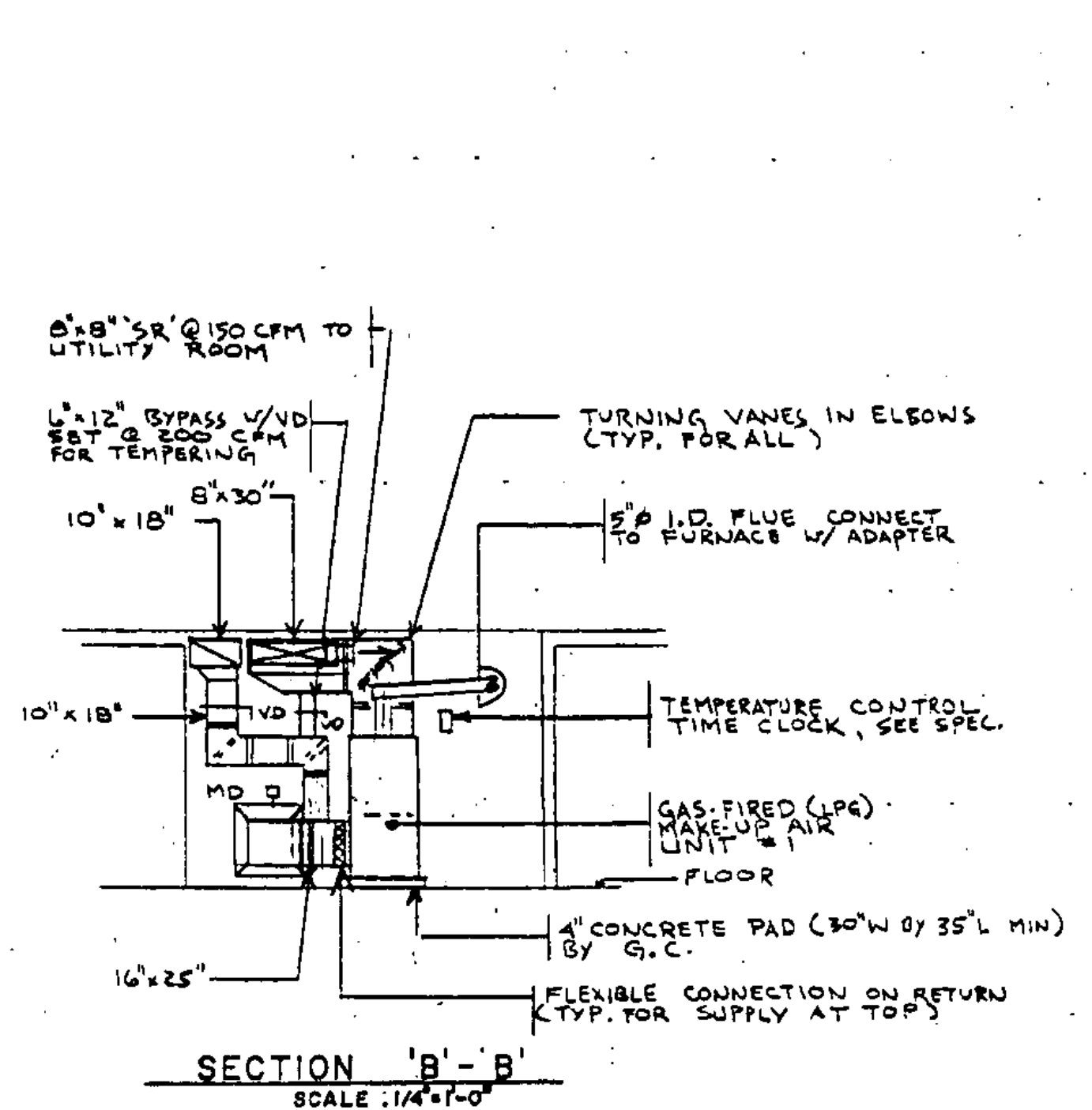
EQUIPMENT SCHEDULE: FURNISH & INSTALL THE FOLLOWING

EXHAUST FAN #1 - UTILITY TYPE BELT DRIVEN, RATED AT 800 CFM, 3/8" STATIC PRESSURE & 951 RPM. 2-5/8" W/ 1/2" HP - 120V/1 POLE MOTOR. FAN BY GREENHECK MODEL SF-9 V/ BOTTOM HORIZONTAL DISCHARGE. INTERLOCK TO RUN ON OCCUPIED CYCLE. (SEE SPEC.) NOTE: INSTALL FAN PRIOR TO INSTALLING REVISED DUCTWORK - FOR FITTING INTO SPACE (800CFM HIGH SPEED/STEEL ON 12" SPACES)

GAS-FIRED MAKE-UP AIR UNIT #1 - GAS-FIRED FURNACE RATED @ 125 MMB LGP INPUT, 100 MMB OUTPUT, 1680 CFM @ .5" STATIC PRESSURE, 3/4" HP - 120V/1 POLE MOTOR W/ 4 MIN SPEED SETTINGS. WIRED TO MH SETTINGS. FURNISH W/ VENT DAMPER & FILTER. UNIT BY THERMO PRIDE - HIGHBOY SECTIONAL GAS FURNACE MODEL NO 2MA-125. SEE SPEC.



SECTION 'A'-A'
SCALE: 1/4" = 1'-0"



SECTION 'B'-B'
SCALE: 1/4" = 1'-0"

STATE OF VERMONT DEPARTMENT OF STATE BUILDINGS AGENCY OF ADMINISTRATION MONTPELIER, VERMONT			
REST AREA REHABILITATION IM-BLDG(2) LYNDON I-91 SOUTHBOUND			
HEATING & VENTILATING - DEMOLITION & RENOVATION FLOOR PLANS, LEGEND, SECTION			
DATE: 6-9-98	SCALE: 1/4"=1'-0"	REVISIONS:	DRAWING NO: HV-1
DRAWN BY: KA	APPROVED BY: NFL	DRAWING NAME: HEATING & VENTILATING	SHEET 15 OF 29

