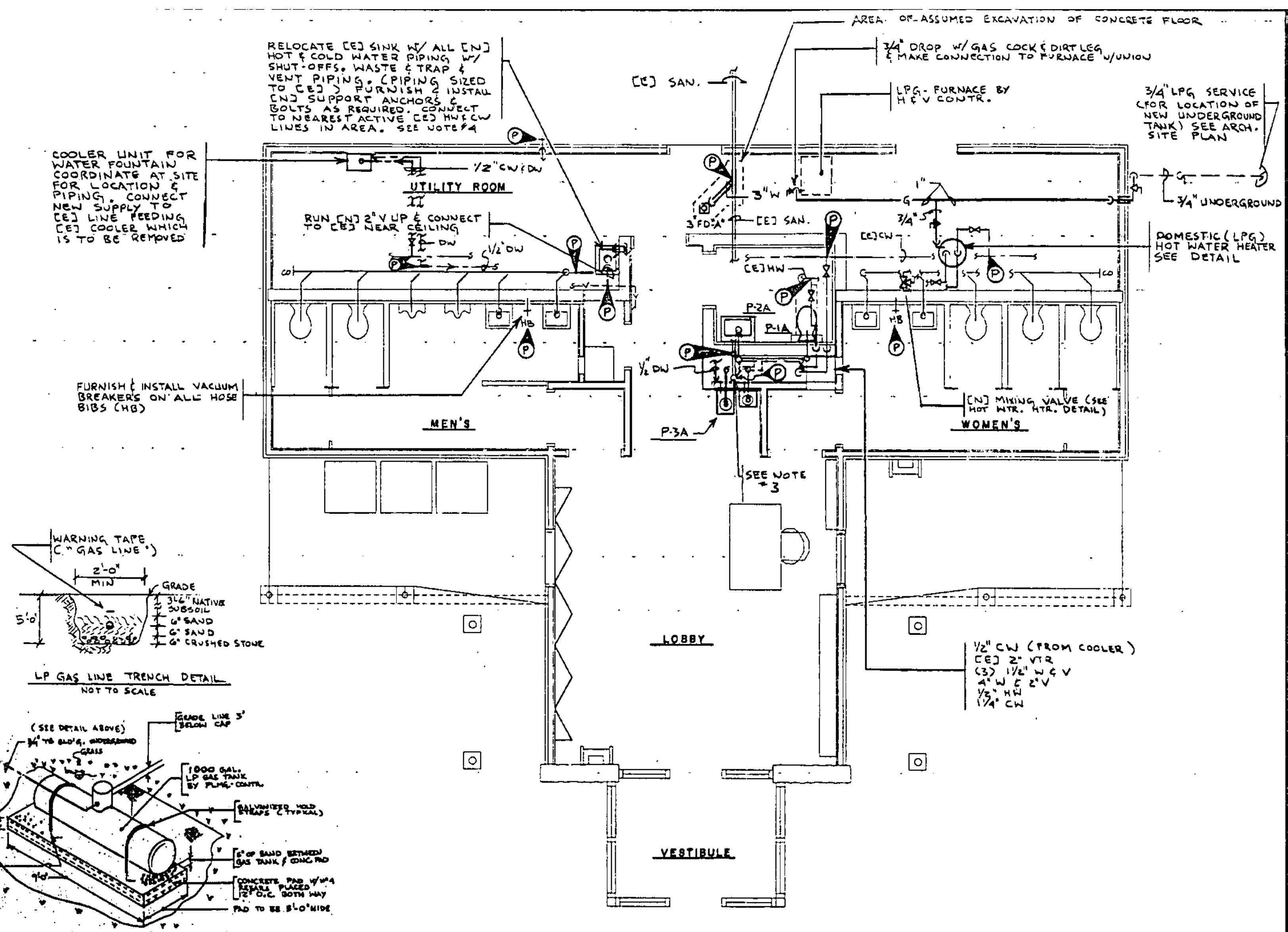


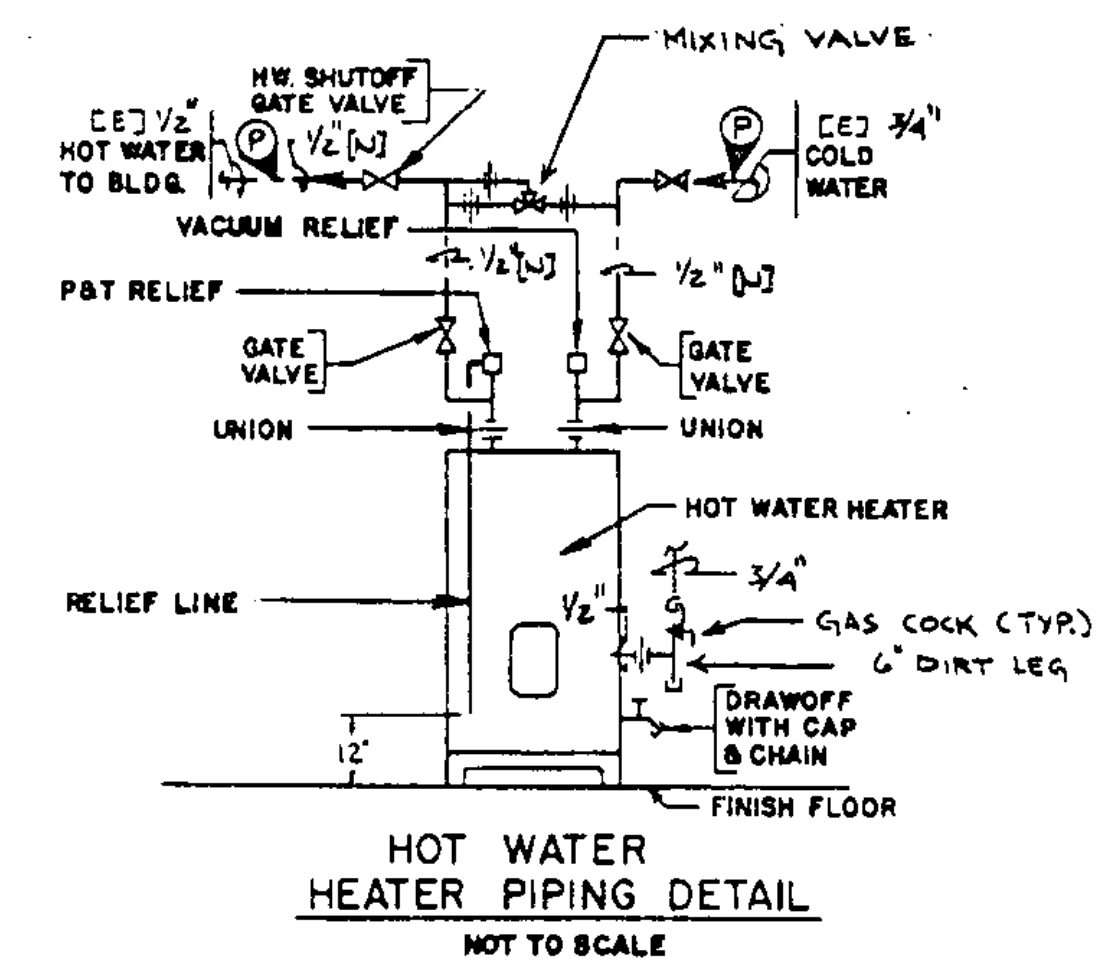
DEMOLITION - PLUMBING - EXISTING FLOOR PLAN
SCALE: 1/4" = 1'-0"



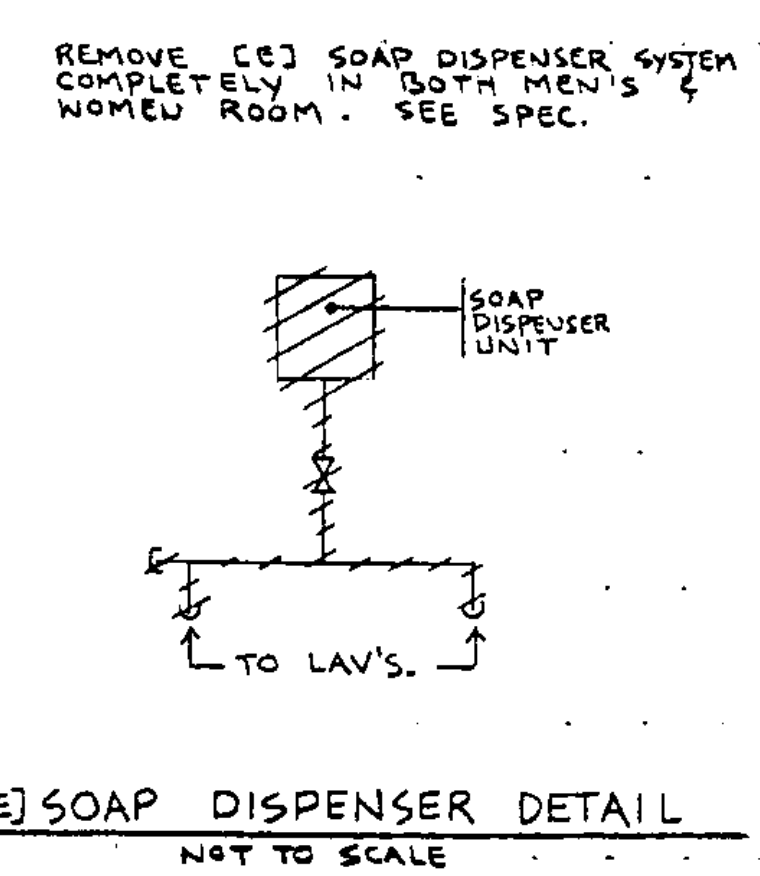
RENOVATION - PLUMBING FLOOR PLAN
SCALE: 1/4" = 1'-0"

PLUMBING LEGEND
SYMBOLS USED ARE INDICATED BY A CHECK (✓)

✓	—	SANITARY OR WASTE LINE (ABOVE GROUND)
✓	—	SANITARY OR WASTE LINE (BELOW GROUND)
✓	—	STORM LINE (ABOVE GROUND)
✓	—	STORM LINE (BELOW GROUND)
✓	—	GAS LINE (LPG)
✓	—	COMPRESSED AIR LINE
✓	—	FIRE LINE
✓	—	VENT LINE (ABOVE GROUND)
✓	—	VENT LINE (BELOW GROUND)
✓	—	COLD WATER LINE (ABOVE GROUND)
✓	—	COLD WATER LINE (BELOW GROUND)
✓	—	HOT WATER LINE
✓	—	HOT WATER RECIRCULATING LINE
✓	—	CLEAN OUT
✓	—	FLOOR CLEAN OUT
✓	—	WALL HYDRANT OR HOSE BIBB
✓	—	GLOBE VALVE
✓	—	CHECK VALVE
✓	—	GATE VALVE
✓	—	FLOOR DRAIN WITH TRAP
✓	—	NEW
✓	—	EXISTING
✓	—	POINT OF (N) PLUMBING CONNECTION TO (R)
✓	—	SAN. SANITARY LINE
✓	—	ST. STORM LINE
✓	—	V. VENT LINE
✓	—	W. WASTE LINE
✓	—	T. TRAP
✓	—	RD. ROOF DRAIN
✓	—	RL. ROOF LEADER
✓	—	DW. DRINKING WATER (WATER COOLER)



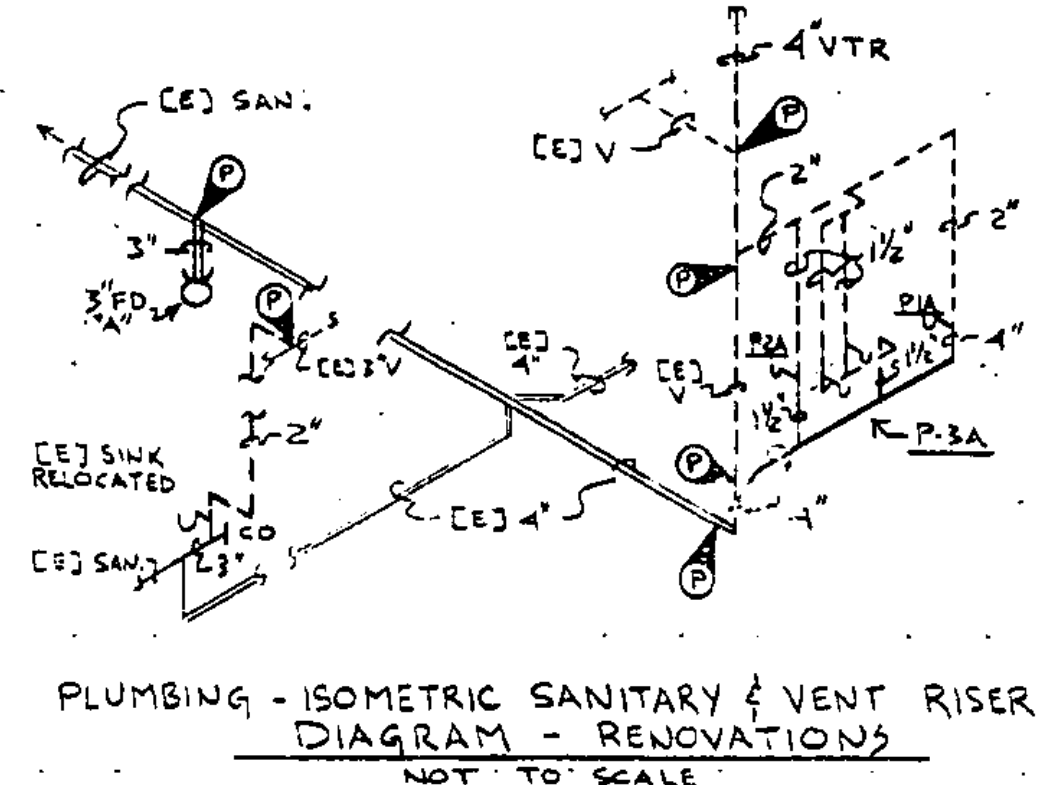
HOT WATER HEATER PIPING DETAIL
NOT TO SCALE



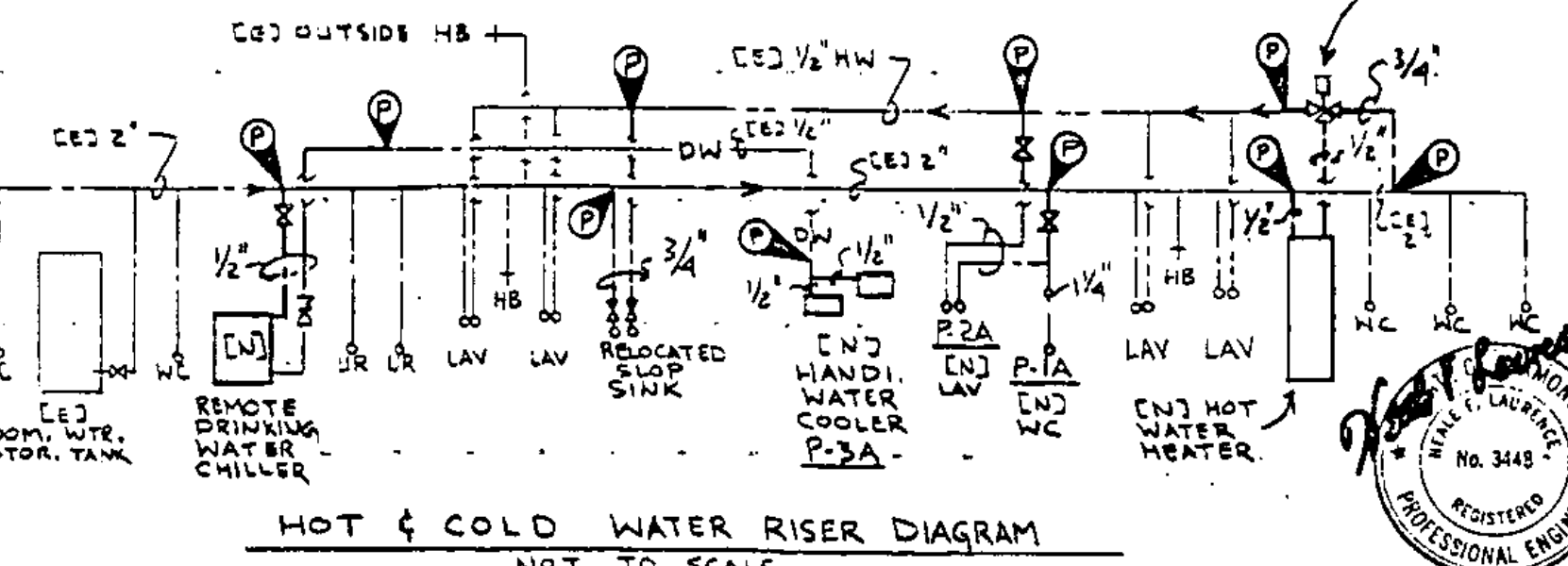
[E] SOAP DISPENSER DETAIL
NOT TO SCALE

PLUMBING FIXTURE & RUNOUT SCHEDULE

MARK	FIXTURE	DESCRIPTION	COLD WATER	HOT WATER	WASTE	VENT
P-1A	WATER CLOSET (HANDICAP USE)		1/4"		4"	2"
P-2A	SINK - WALL HUNG (HANDICAP USE)		1/2"	1/2"	1 1/2"	1 1/2"
P-3A	DOUBLE WATER COOLER (REG & HANDI)		(2) 1/2"		(2) 1 1/2"	(2) 1 1/2"



PLUMBING - ISOMETRIC SANITARY & VENT RISER DIAGRAM - RENOVATIONS
NOT TO SCALE



HOT & COLD WATER RISER DIAGRAM
NOT TO SCALE

- NOTES:**
- 1) THE UNDERFLOOR SANITARY SYSTEM PIPING IS ASSUMED TO BE APPROXIMATELY CORRECT. HOWEVER THE PLUMBING SUB-CONTRACTOR SHALL FIELD VERIFY ITS EXACT LOCATION PRIOR TO THE GENERAL CONTRACTOR BREAKING UP THE FLOOR.
 - 2) COORDINATE ALL WORK W/ EXISTING CONDITIONS & END WORK BY OTHER TRADES.
 - 3) EXTEND [E] 4" VENT OR REGIE TO 4" VENT UP THRU EXISTING ROOF STRUCTURE & NEW ROOF. THIS CONTRACTOR TO FURNISH NEW 1/2" COPPER ROOF SLEEVES TO ROOFING SUB-CONTRACTOR.
 - 4) REMOVE [E] 4" PLUG AT END OF SANITARY WASTE LINE & CONNECT [E] 3" WASTE W/ [E] 5" CO. ANCHOR FLANGE TO 1" THICK CONCRETE PAD ANCHORED TO FLOOR - VERIFY PITCH IN FIELD.
 - 5) ALL END DOMESTIC HOT WATER PIPING TO BE 1/2"

STATE OF VERMONT
DEPARTMENT OF STATE BUILDINGS
AGENCY OF ADMINISTRATION
MONTPELIER, VERMONT

REST AREA REHABILITATION IM-BLDG(2)
LYNDON I-91 SOUTHBOUND
PLUMBING - DEMOLITION & RENOVATION
FLOOR PLANS, SCHEDULE, DETAIL & LEGEND

DATE: 6-9-95	SCALE: 1/4" = 1'-0"	REVISIONS:	DRAWING NO: P-1
DRAWN BY: KA, GN	APPROVED BY: NFL	DRAWING NAME: PLUMBING	SHEET 14 OF 29