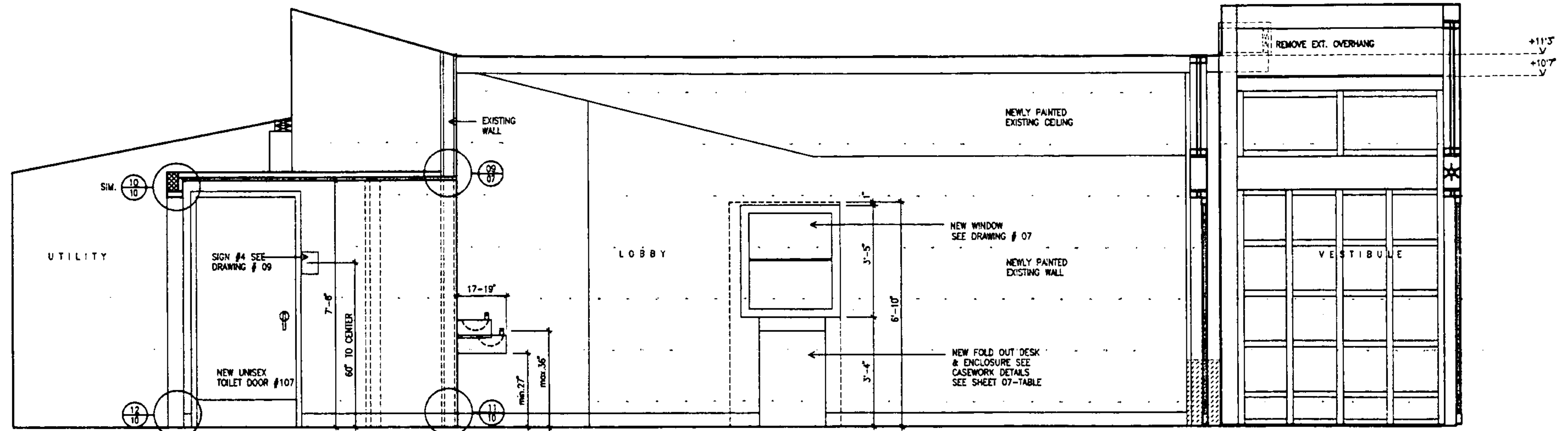
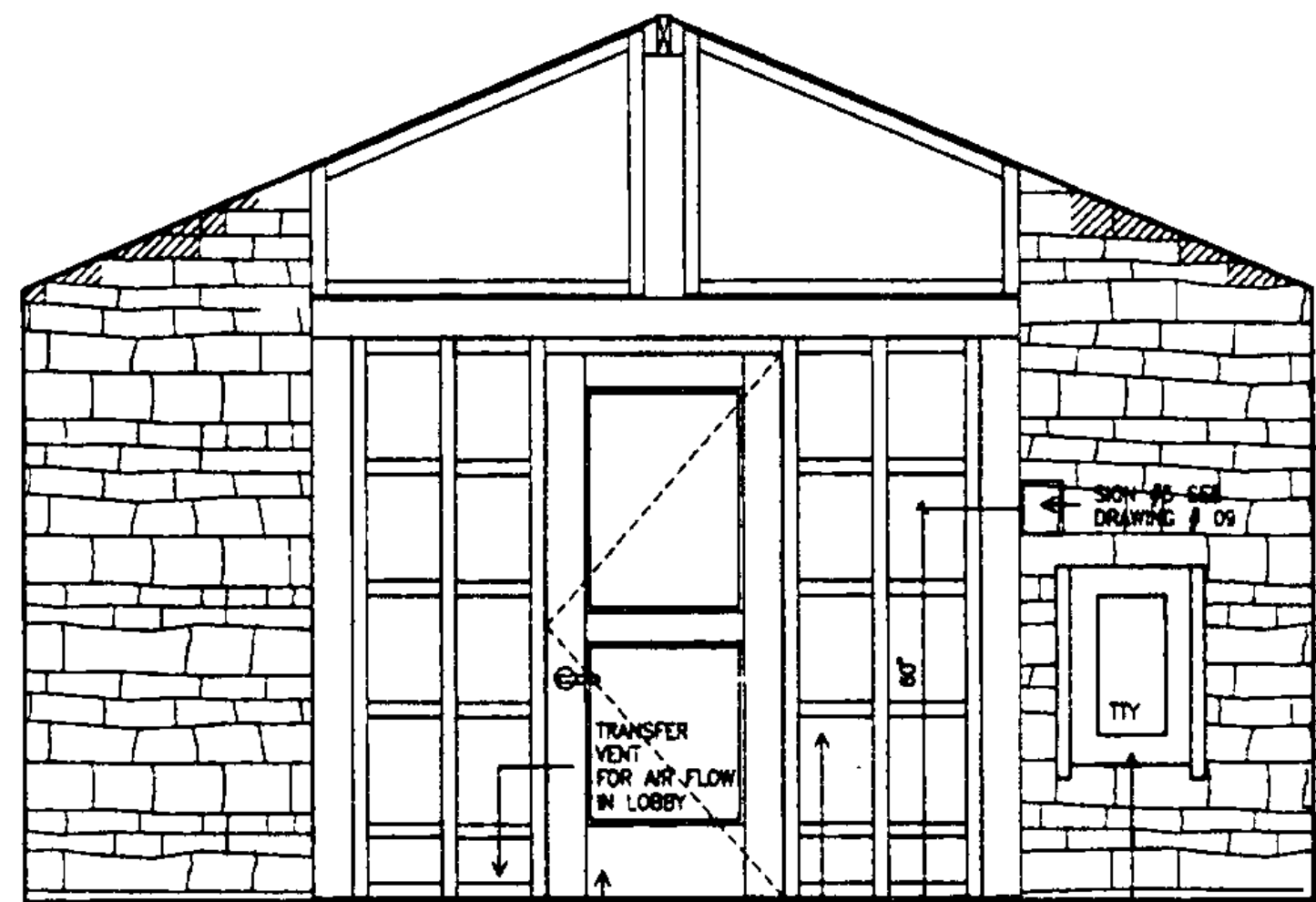


WEST ELEVATION

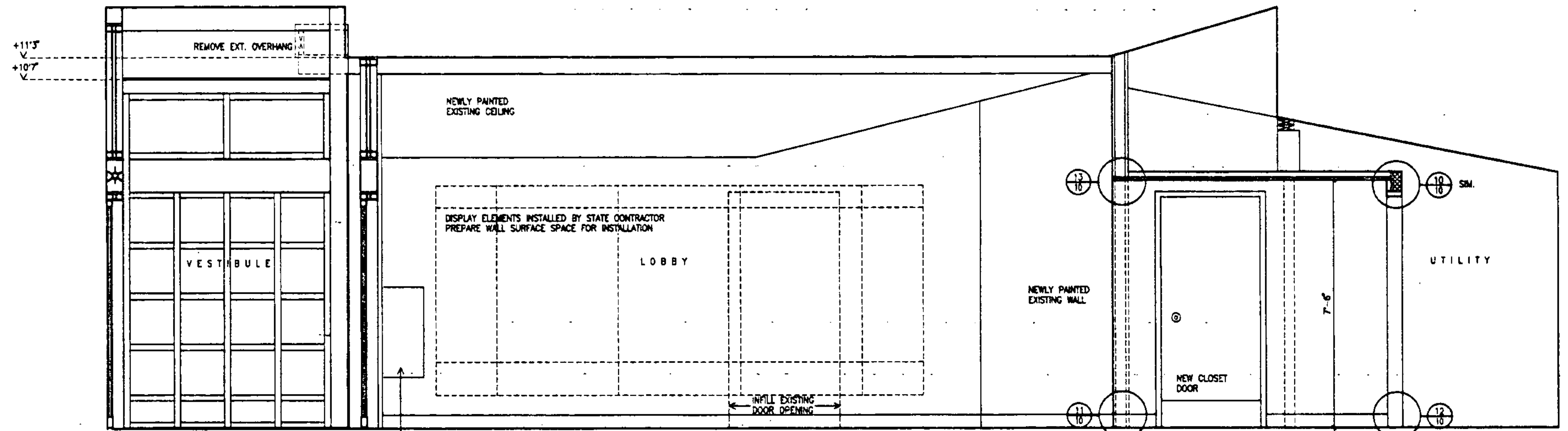


NORTH ELEVATION

FOR DETAILS ON VESTIBULE - STOREFRONT SYSTEM PLEASE SEE DRAWING # 04



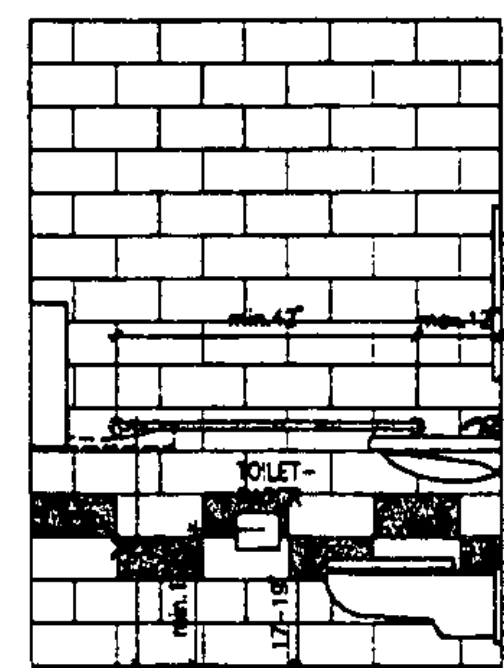
EAST ELEVATION



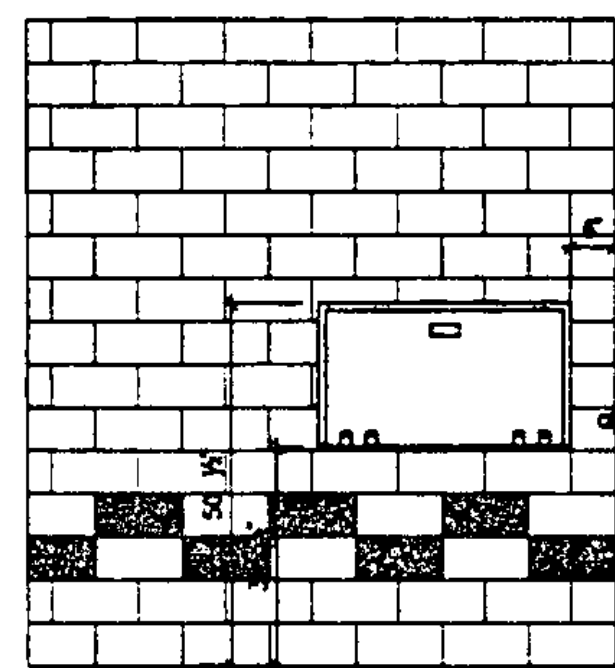
SOUTH ELEVATION

FOR DETAILS ON VESTIBULE - STOREFRONT SYSTEM PLEASE SEE DRAWING # 04+10.

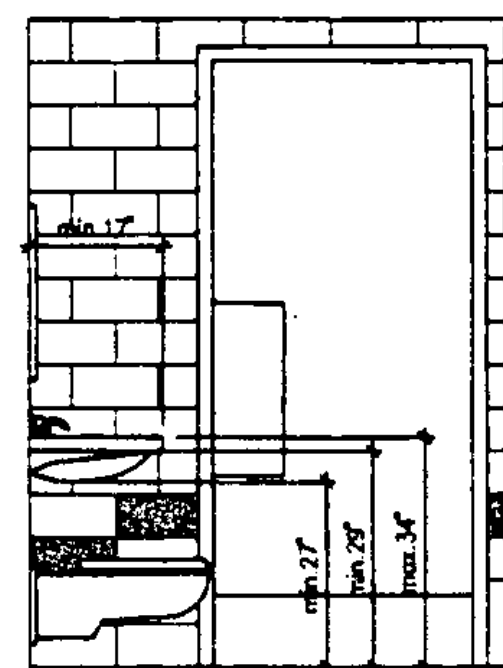
TTY PHONES INSTALLED BY STATE CONTRACTOR N.I.C.



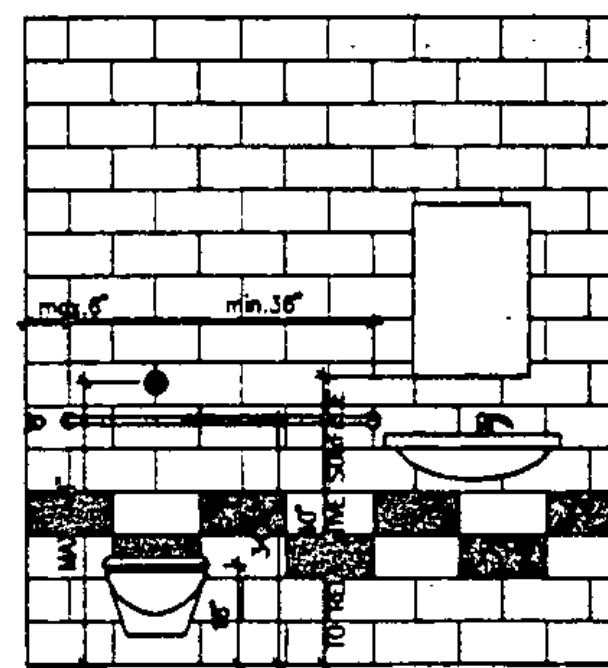
ELEVATION 1



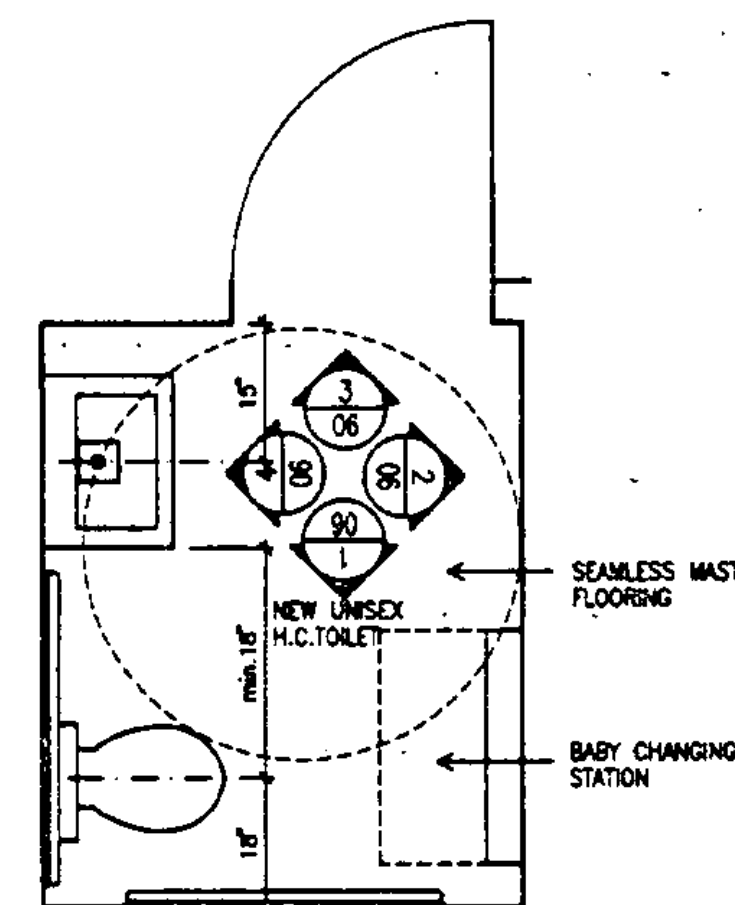
ELEVATION 2



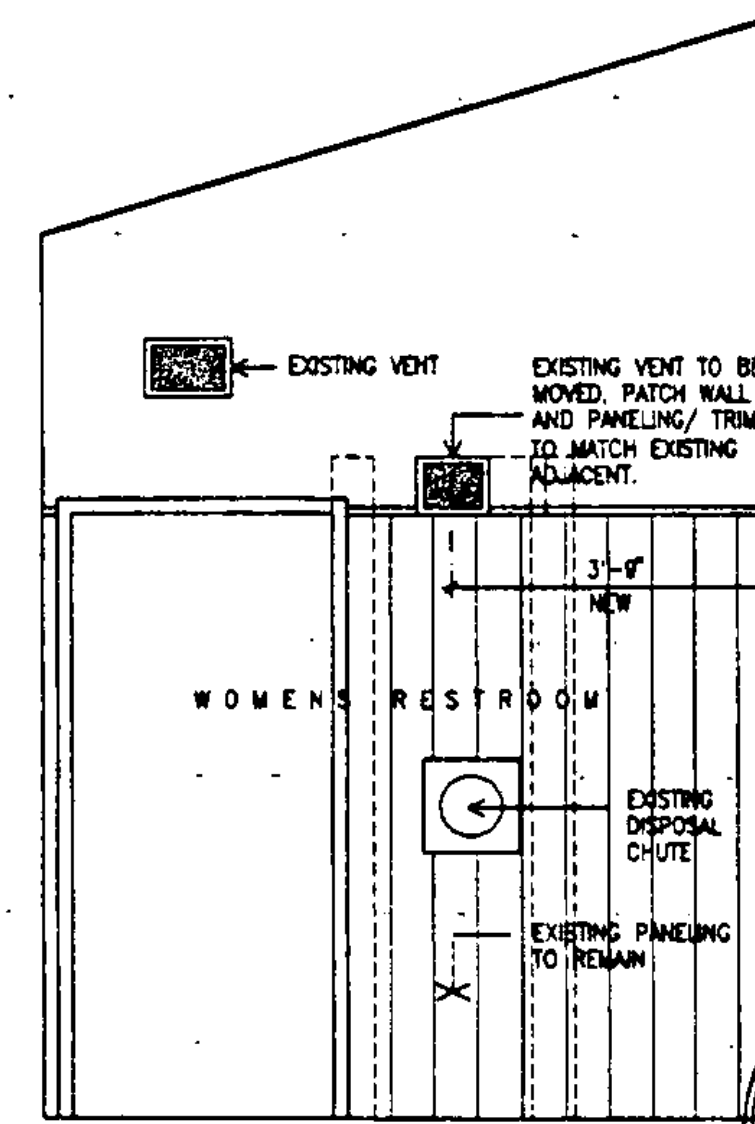
ELEVATION 3



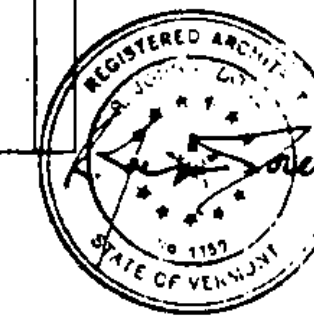
ELEVATION 4



PLAN



ELEV. WOMEN RESTROOM



STATE OF VERMONT DEPARTMENT OF STATE BUILDINGS AGENCY OF ADMINISTRATION MONTPELIER, VERMONT			
REST AREA REHABILITATION LYNDON I-91 SOUTHBOUND INTERIOR ELEVATIONS			
DATE JUNE 8, 1995	SCALE 1/2"=1'-0"	REVISIONS	DRAWING NO. 06
DRAWN BY G.L.J.	PROJECT NO. IM-6106(2)		SHEET 9 OF 29
APPROVED BY J.S.A.			