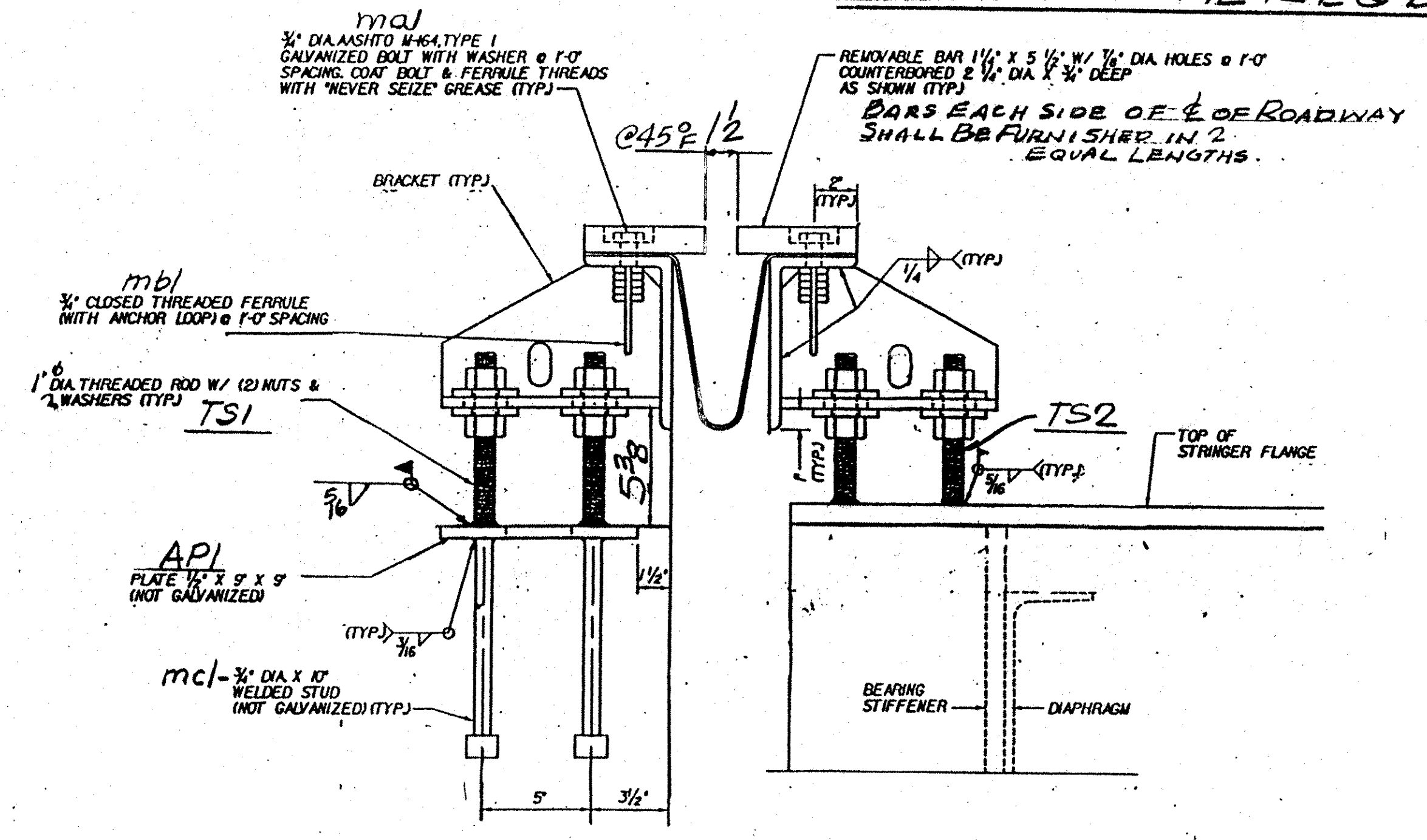
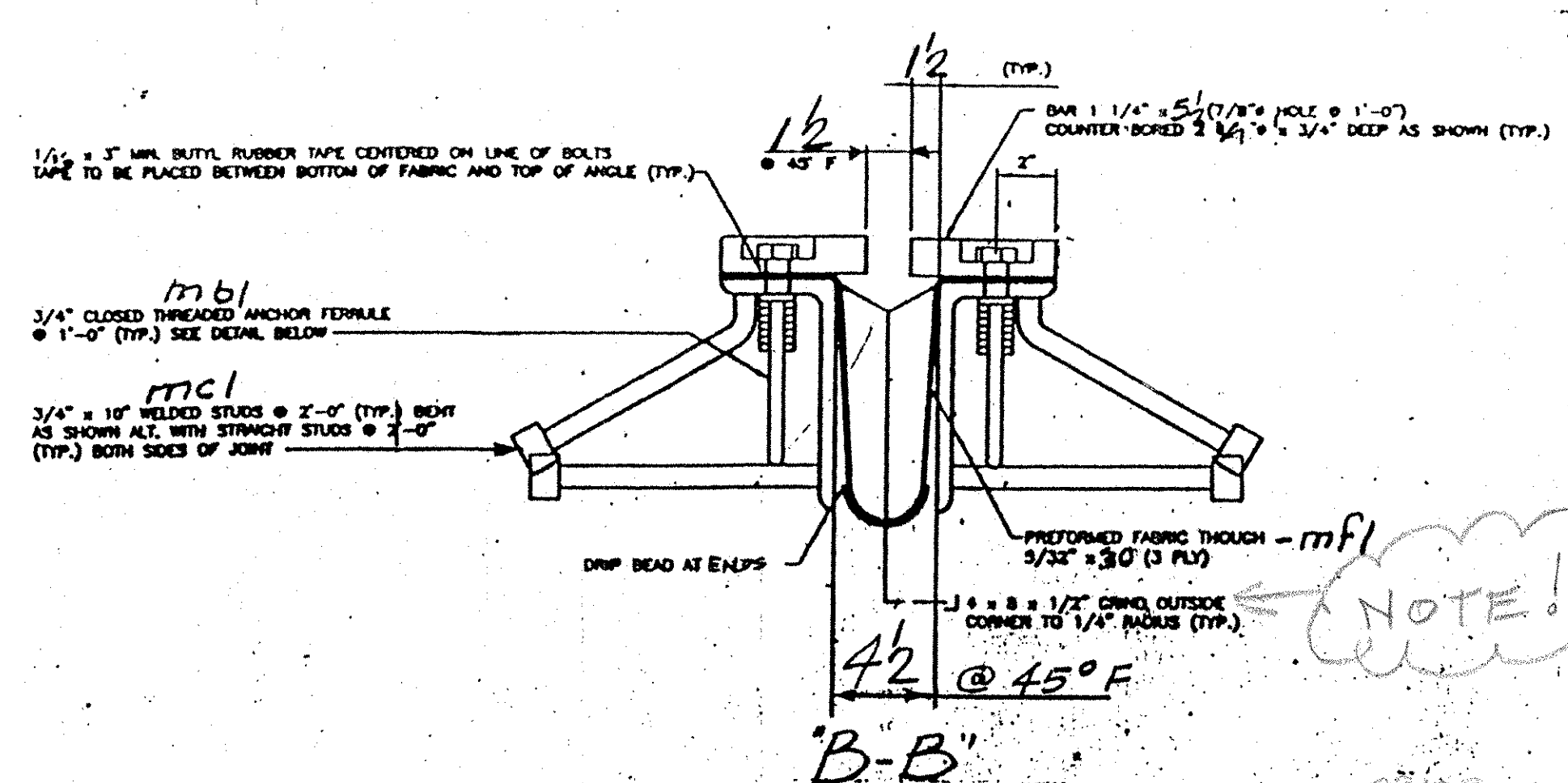


EJ2-N. ONE REQ'D (CABUT. 2 - BRIDGE 50N)

WORK THIS DWG W/ DWG. J2A



TYP. SECTION  
C ADJUSTMENT BRACKETS.



ANCHOR FERRULE DETAIL - mbl

TVGA  
Engineering, Surveying, P.C.

NO EXCEPTIONS TAKEN  REJECTED  
 FURNISH AS CORRECTED  
 REVISE AND RESUBMIT

ENGINEER has reviewed Shop Drawings and Samples and other data which Contractor is required to submit, galy for conformance with the information given in the Contract Documents and complying with the design concept of the completed Project as a for condition where as intended in the Contract Documents. Such review does not extend to means, methods, techniques, sequences or procedures of construction or to safety precautions and programs incident thereto. Contractor is responsible for completion to be confirmed and controlled at the job site, for information that pertains solely to the fabrication process or to the techniques of construction, and for coordination of the work of all trades.

BY: *DEW/ST*  
DATE: 4/9/01

NOTE!!  
PRIOR TO GALVANIZING, ALL CORNERS AND EDGES OF STEEL PLATES, SHAPES, ETC., SHALL BE GROUDED TO A 1/16\"/>

ABM INFO		SHOP BILL				JOB NO.	DRG. NO.
PAGE	LINE	NO.	DESCRIPTION	FT	IN	REMARKS	WEIGHT
	1		EXP. JNT. A334				
	2	2	2x4x1/2	25	2		
	2	25	DO	25	2		
	2	22	2x5x1/4	22	9		
	2	22	DO	22	9		
	10	10	2x8	10	6		
	10	10	2x6	10	6		
	88	24	3/4\"/>				
	88	24	3/4\"/>				
	100	10	3/4\"/>				
	1	52	1\"/>				
	2	50	1\"/>				
20		9	1\"/>				
20		7	DO				
80			1\"/>				
80		3	3x3				
5		9	2x9				
20		10	3/4\"/>				
9		1	4x4x3/8				
9		3	3/4\"/>				
<b>CURBS</b>							
2		3	2x3x1/2				
2		1	2x3x3/8				
2		2	2x3x1/2				
2		3	2x3x1/2				
2		1	2x3x1/2				
2		2	2x3x1/2				
2		3	2x3x1/2				
2		1	2x3x1/2				
2		3	2x3x1/2				
2		1	2x3x1/2				
2		2	2x3x1/2				
2		2	2x3x1/2				
28		24	3/4\"/>				
28		24	3/4\"/>				
12		10	3/4\"/>				
24		24	3/4\"/>				
32		7	3/4\"/>				
4		1	4x4x3/8				
16		5	2x3x1/2				
16		4	2x3x1/2				

PAY ITEM 516.10

OUT FOR APPROVAL	2-2-01								
ISSUED TO SHOP									
FIELD & OFFICE									

REV.	REMARKS	DATE	DMN	CHK	APP	Q.A.	NO.	DIA.	LGT	TYPE	WASHER
	PROJECT NO. <b>INT-089-2 (26) STATE BRIDGE NO. 50N</b>										
	MATERIAL: <b>1/2\"/&gt; </b>										
	SURFACE PREP. & PAINT:										
	<b>GALVANIZED AFTER FAB</b>										
	DESCRIPTION: <b>EXP. JNT. ABUT. 2</b>										
	JOB: <b>BRIDGE 50N</b>										
	<b>IB9 OVER U.S. ROUTE 2</b>										
	<b>MIDDLESEX-BOLTON, VT.</b>										
	CUSTOMER: <b>WINTERSET INC.</b>										
	<b>CASCO BAY STEEL STRUCTURES, INC.</b>										
	75 SPRING HILL ROAD SACO, MAINE 04072										
	PHONE (207) 282-7360 FAX: (207) 282-1179										
	JOB NO. <b>127-50N</b>										
	DRG. NO. <b>J2</b>										
	REV. <b>Δ</b>										