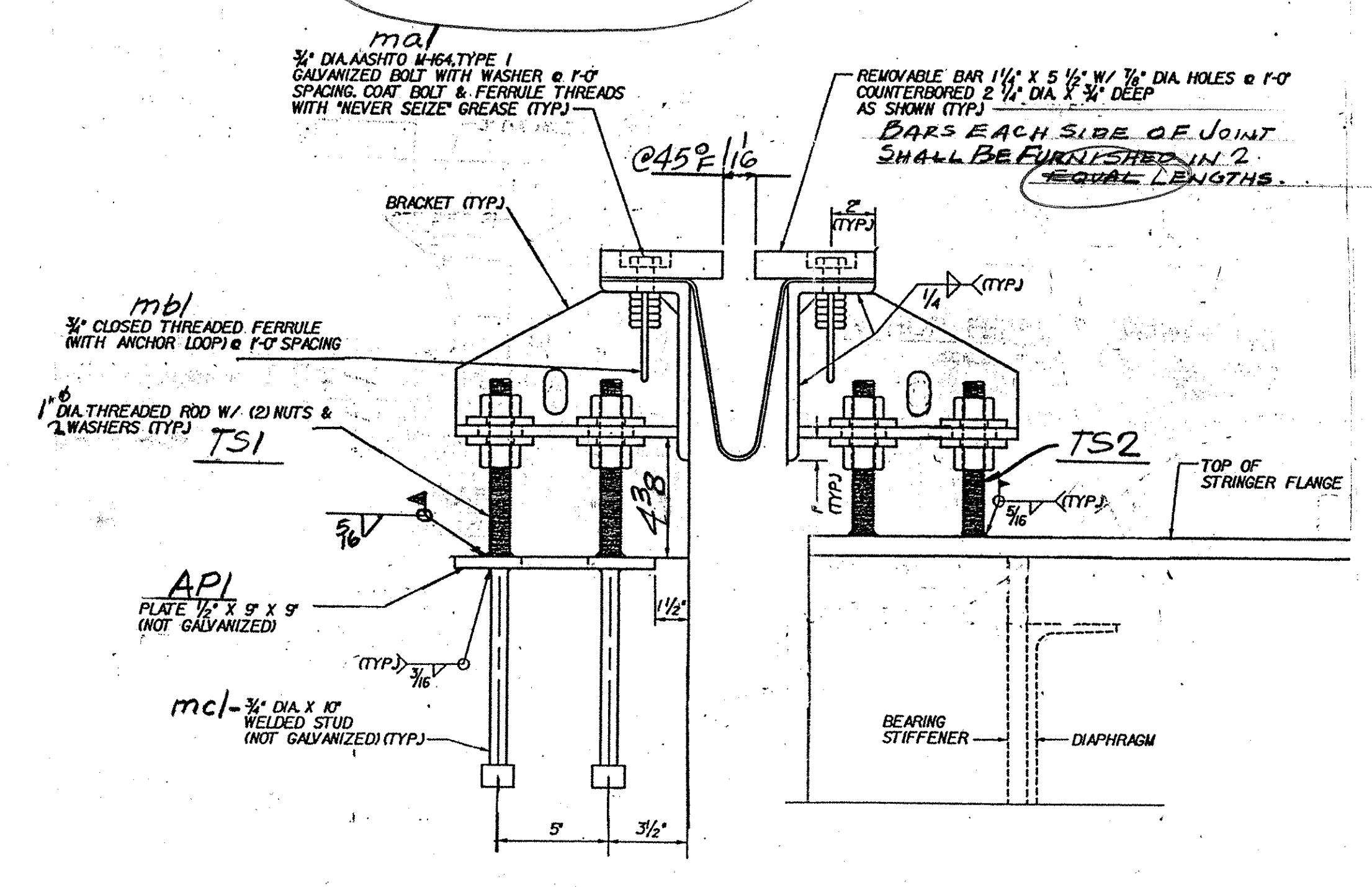


EJI-N - ONE REQ'D @ ABUT. 2 - BRIDGE 49N

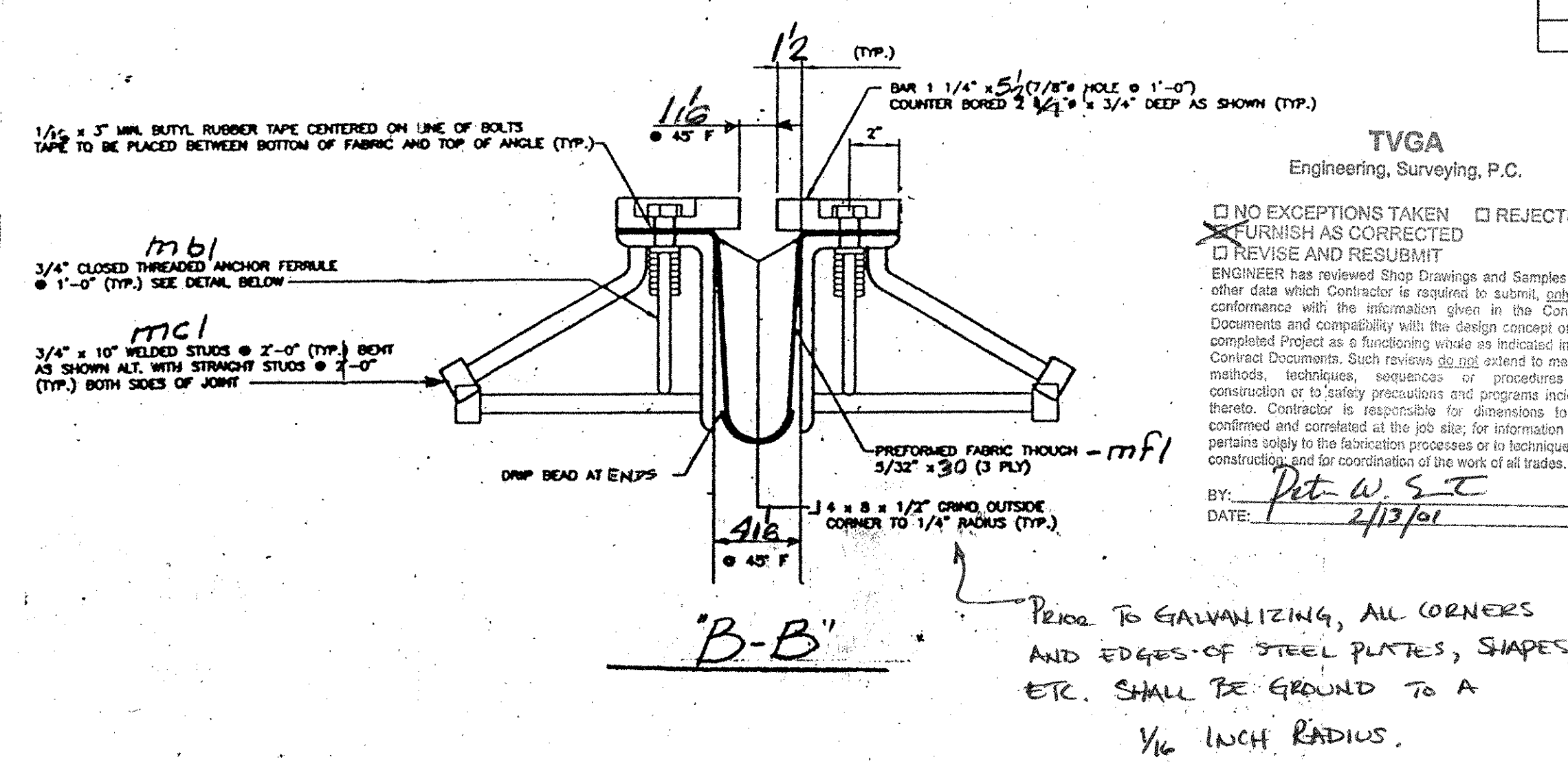
EJI-S - ONE REQ'D @ ABUT. 2 BRIDGE 49S

WORK THIS DWG. W/ DWG. J1A



TYP. SECTION

ADJUSTMENT BRACKETS.



TVGA
Engineering, Surveying, P.C.

NO EXCEPTIONS TAKEN REJECTED

FURNISH AS CORRECTED

REVISE AND RESUBMIT

ENGINEER has reviewed Shop Drawings and Samples and other data which Contractor is required to submit, only for conformance with the information given in the Contract Documents and compatibility with the design concept of the completed Project as a favoring whole as indicated in the Contract Documents. Such reviews do not extend to ensure, methods, techniques, sequences or procedures of construction or to safety precautions and programs incident thereto. Contractor is responsible for information to be confirmed and completed at the job site, for information that pertains solely to the fabrication process or to techniques of construction and for coordination of the work of all trades.

BY: Pat W. S. T.

DATE: 2/13/01

AEM INFO		SHOP BILL				JOB NO.	DRG. NO.		
PAGE	LINE	NO.	DESCRIPTION	FT	IN	ASSEM. MARK	SHIPPING MARK	REMARKS	WEIGHT
	1		EXP. JNT. ASS'Y	48	9		EJI-N		
	1		DO	48	9		EJI-S		
		4	4x8x1/2	21	42	aa1 ^R			
		4	DO	27	42	ba1 ^R			
		4	BAR 5/8 x 1/4	19	1	ab1 ^R			
		4	DO	25	1	bb1 ^R			
		28	R 2 x 8	1	24	bc1			
		28	R 2 x 6	1	24	bd1			
		176	3/4" H.S. BOLTS			ma1			
		176	3/4" ANCHOR FERRULES			mb1			
		164	3/4" ANCH. STUDS	10	mc1				
	2		PRE-FORMED FABR.	50	0	mfl		3 PLY PER SURFACE TREATMENT SPEC. M. 100-TYP. II	
	4		1/2" x 3/8" BUTYL RUBBER TAPE 1/2" x 3"	49	0				
	56		1/4" THREADED RODS	7		TS1			
	56		DO	9		TS2			
			2 1/4" HEX NUTS						
			2 1/4" BAR 3 x 3/8	3	WI			WASHER	
	14		R 6 x 9	9		API		NOT GALV.	
	56		3/4" ANCH. STUDS	10	mc1				
	18		4 x 4 x 3/8	1	0	sd1			
	36		3/4" H.S. BOLTS	3				W/ WASH.	
CURBS									
	4		R 3/8 x 13/16	1	104	cp1			
	4		DO		68	cp2			
	4		DO	2	92	cp3			
	4		R 3/8 x 12/16	1	92	cp2			
	4		DO		64	cp2a			
	4		DO	2	34	cp2b			
	4		R 3/8 x 9/16	1	92	cp3			
	4		R 3/8 x 9/16	1	64	cp3a			
	4		R 3/8 x 9/16	1	82	cp4			
	4		R 3/8 x 9/16	1	58	cp4a			
	4		R 3/8 x 9	1	108	cp5			
	4		R 3/8 x 8 5/8	1	108	cp6			
	64		3/4" H.S. BOLTS		24	ma1			
	64		3/4" ANCH. FERRULES		mb1				
	24		3/4" ANCH. STUDS	10	mc1				
	16		3/4" H.S. BOLTS	24	md1			W/ NEW	
	64		3/4" ANCH. STUDS	7	me1				
	8		4 x 4 x 3/8	1	84	cl1/4			
	24		R 3/8 x 5/8	5	sp1				
	24		R 3/8 x 4	4	sp2				

PAY ITEM 516.10

OUT FOR APPROVAL 01-11-01

OUT FOR APPROVAL

ISSUED TO SHOP

FIELD & OFFICE

REV.	REMARKS	DATE	DWN	CHK	APP	Q.A.	NO.	DIA.	LGT	TYPE	WASHER	
	PROJECT NO. IM-089-2 (26) STATE BRIDGE NO. 49S & 49N											
	MATERIAL: 414570 PER 1/270-0236 ELECTRODES: PER PROC. HOLES: AS NOTED SHOP BOLTS: 3/4" H.S.											
SURFACE PREP. & PAINT:												
GALVANIZED AFTER FAB.												
DESCRIPTION: EXP JOINTS - ABUT. 2										DRAWN BY		DATE
JOB: BRIDGES 49S & 49N										JPF		1-01
I 89-SB-OVERTH 7										CHKD BY		
MIDDLESEX - BOLTON, VT.										APPROV BY		
										Q.A.		
CUSTOMER: WINTERSET INC.												
CASCO BAY STEEL STRUCTURES, INC.										JOB NO.		DRG. NO.
75 SPRING HILL ROAD SACO, MAINE 04072										126-49SN		J1
PHONE (207) 282-7360 FAX. (207) 282-1179										REV. Δ		570 BS 49