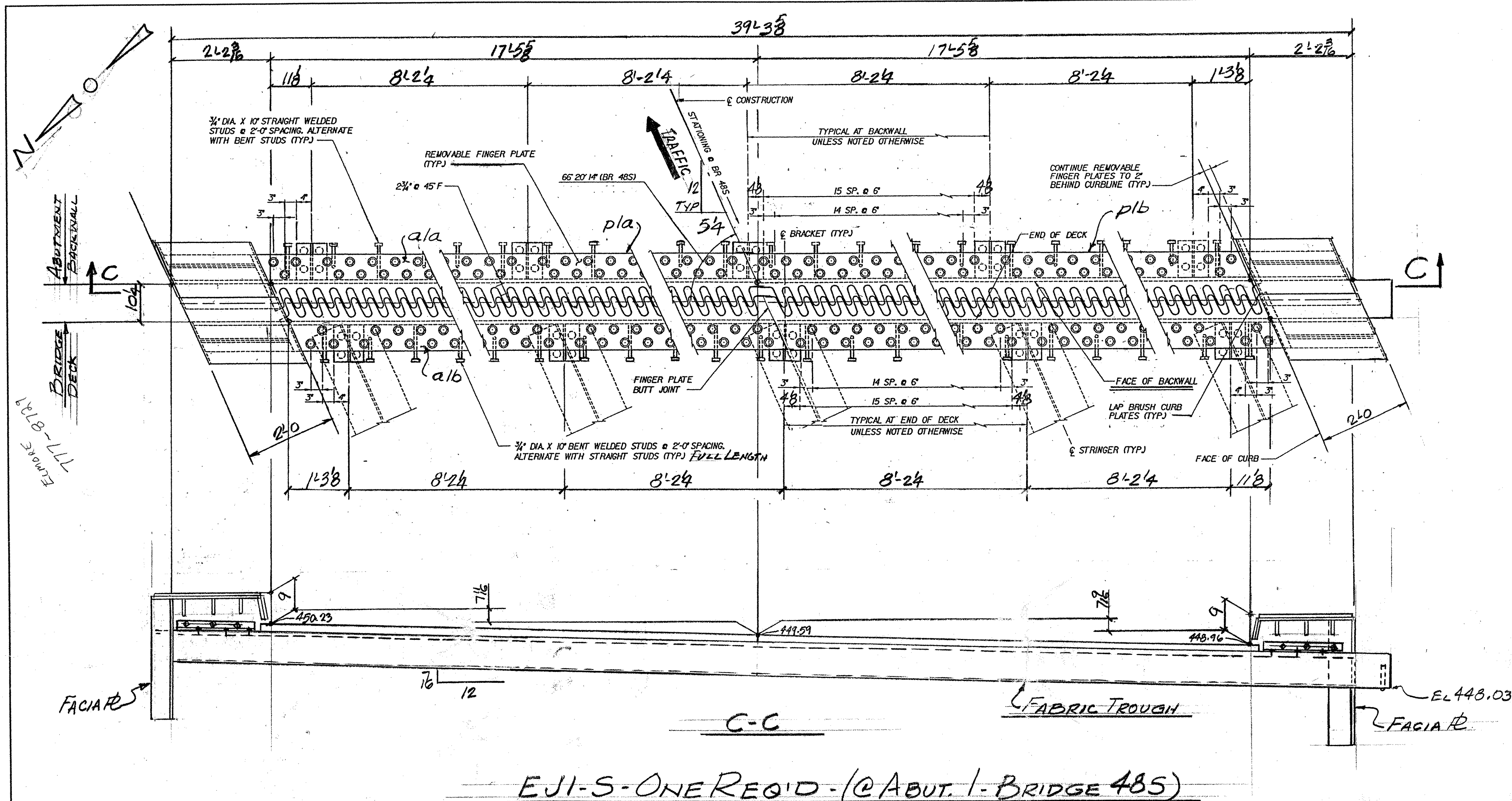


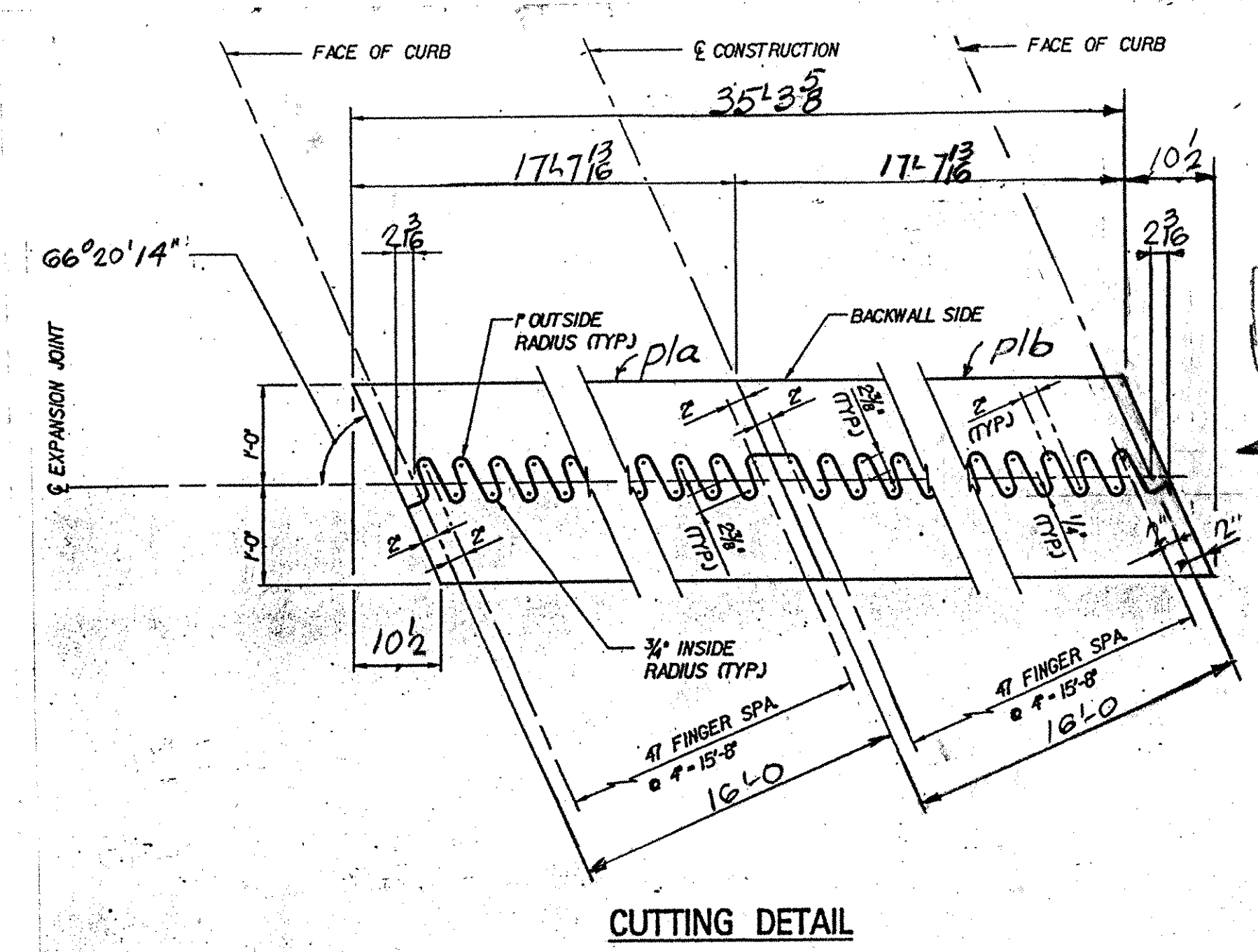
05.9159



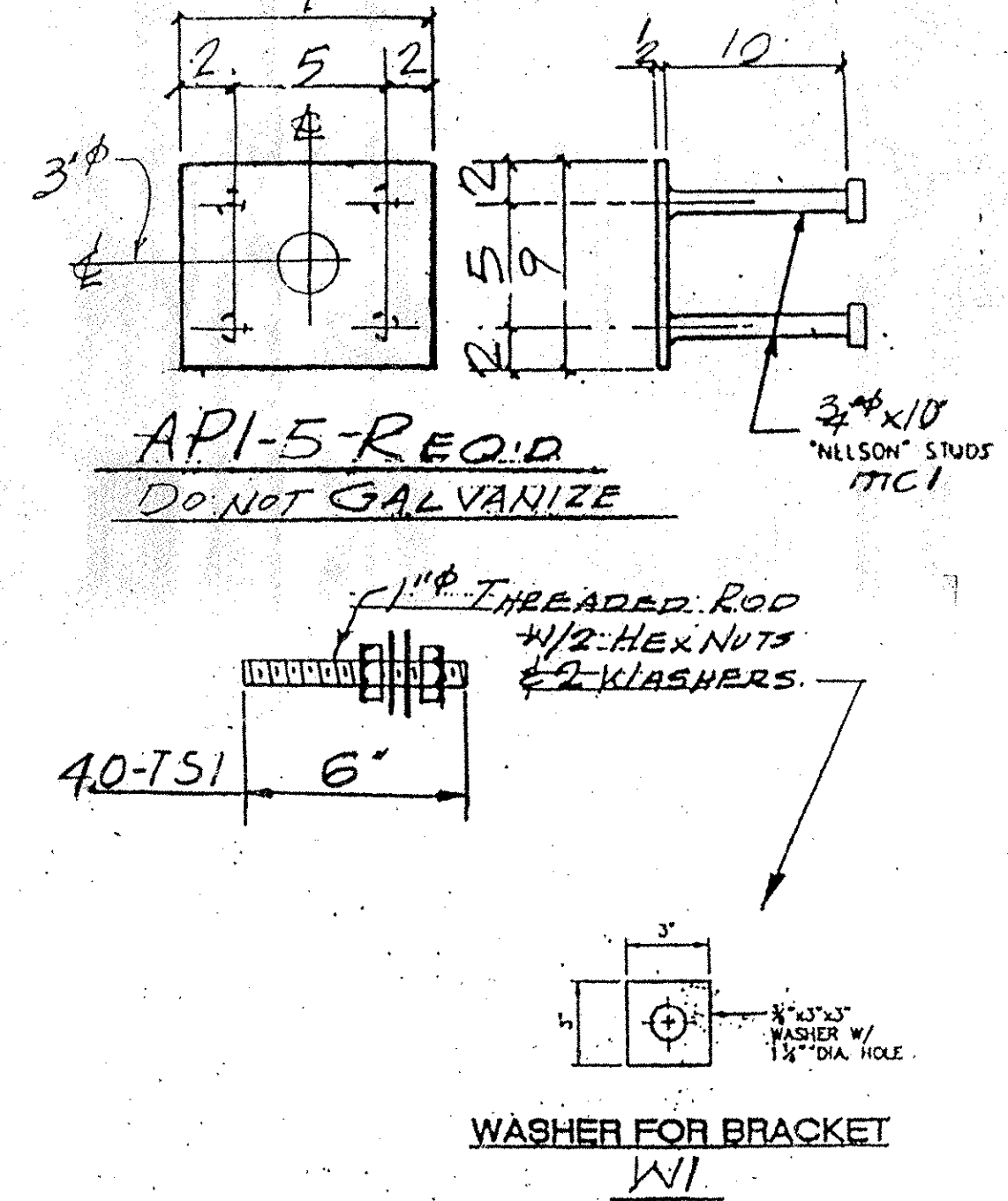
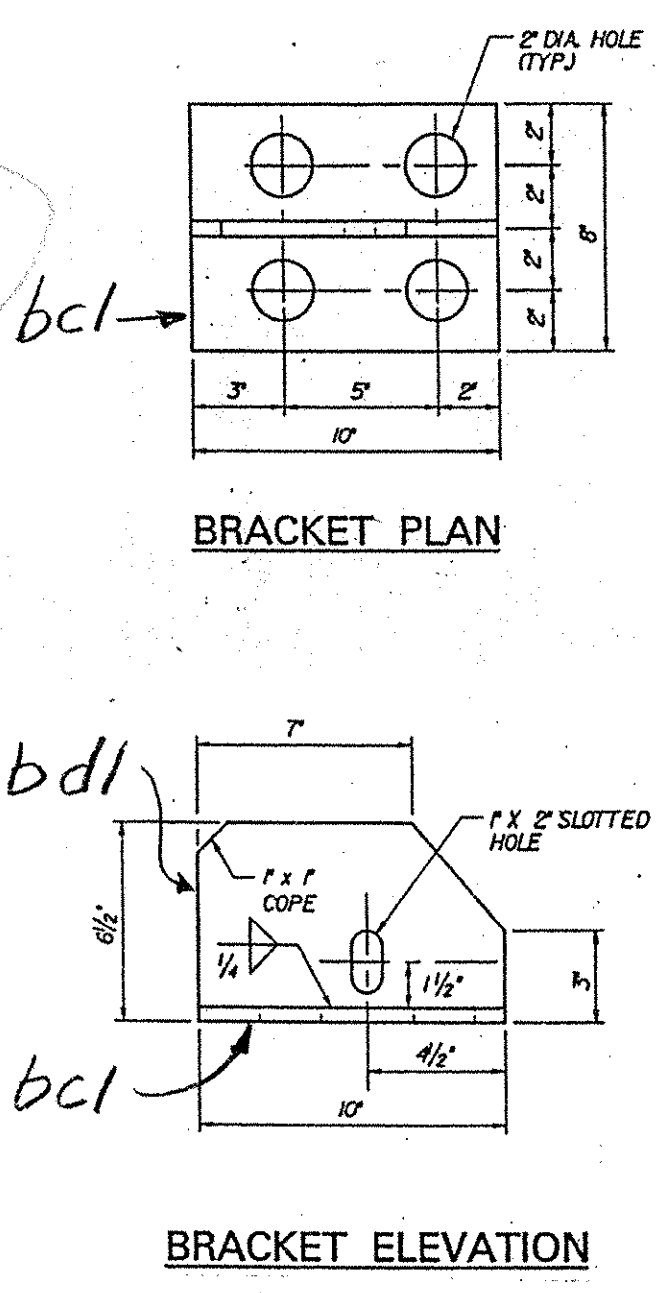
ABM INFO		SHOP BILL				JOB NO.	DRG. NO.
PAGE	LINE	NO.	DESCRIPTION	FT	IN	REMARKS	WEIGHT
						125-485	J1
	1		EXP. JNT ASSY	40	0	EJ1-S	
		1	R 24x24	18	6 1/2	pla	
		1	Do	18	6 1/2	plb	
		1	L 8x8x1'	39	5 3/8	a1a	
		1	Do	39	6 3/8	a1b	
		10	R 1/2 x 8	10	bcl		
		10	R 1/2 x 6	10	bdl		
		140	3/8\"/>				

EJ1-S-ONE REQ'D - (@ ABUT. 1 - BRIDGE 485)

WORK THIS DWG. W/ DWG J1A



VERIFY OK



TVGA
Engineering, Surveying, P.C.

NO EXCEPTIONS TAKEN REJECTED
 FURNISH AS CORRECTED
 REVISE AND RESUBMIT

ENGINEER has reviewed Shop Drawings and Samples and other data which Contractor is required to submit, only for conformance with the information given in the Contract Documents and compliance with the design concept of the completed Project as a forerunner where so indicated in the Contract Documents. Such review is not intended to constitute a warranty, technical assistance, or procedure of construction or to safety practices, and programs incident thereto. Contractor is responsible for dimensions to be confirmed and controlled at the job site, for information that remains solely the fabrication processes or to techniques of construction and for coordination of the work of all trades.

BY: Pete W. S.E.
DATE: 4/9/94

PRIOR TO GALVANIZING, ALL CORNERS AND EDGES OF STEEL PLATES, SHAPES, ETC., SHALL BE GROUNDED TO A 1/16\"/>

PAY ITEM 516.10

OUT FOR APPROVAL	2-14-94										
ISSUED TO SHOP											
FIELD & OFFICE											
REV.	REMARKS	DATE	DWN	CHK	APP	Q.A.	NO.	DIA.	LGT	TYPE	WASHER
	PROJECT NO. JM-089-2(26) STATE BRIDGE NO. 485										
	MATERIAL: A513-70 ELECTRODES: ER70C HOLES: AS NOTED SHOP BOLTS: 3/4\"/>										
	SURFACE PREP. & PAINT:										
	<u>GALVANIZED AFTER FAB. U.N.</u>										
DESCRIPTION:	EXP. JOINT - ABUT. 1	DRAWN BY:	UPF	DATE:	2-01						
JOB:	BRIDGE 485	CHKD BY:									
	<u>I 89 OVER LITTLE RIVER</u>	APPROV BY:									
	<u>MIDDLESEX-BOLTON, VT.</u>	Q.A.									
CUSTOMER:	WINTERSET INC.	JOB NO.:	125-485	DRG. NO.:	J1						
	CASCO BAY STEEL STRUCTURES, INC.	PHONE (207) 282-7360	SACO, MAINE 04072	FAX (207) 282-1179							