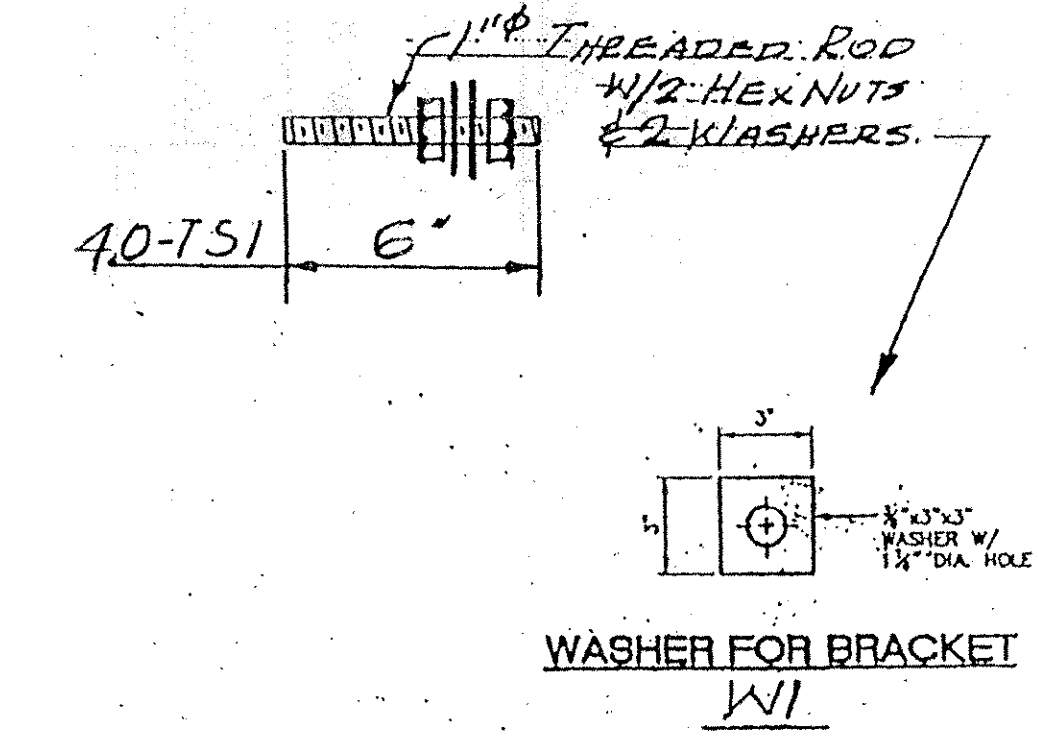
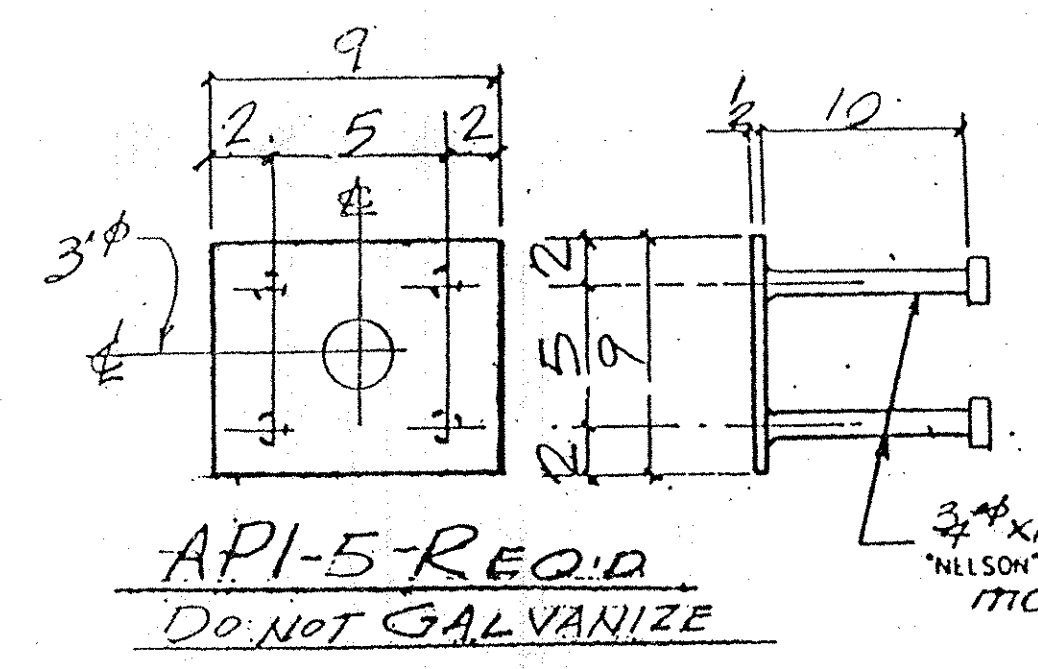
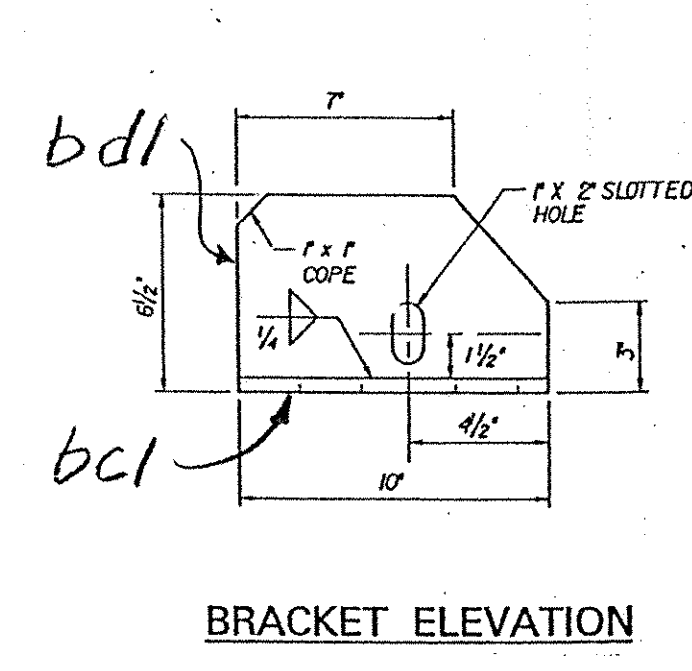
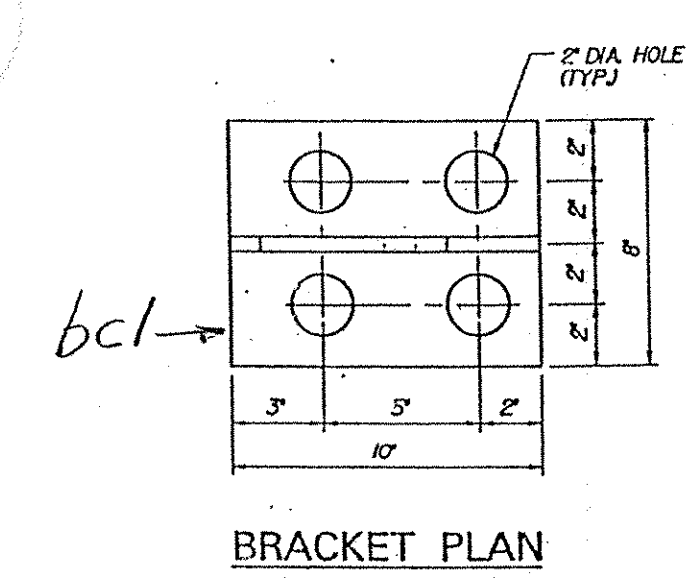
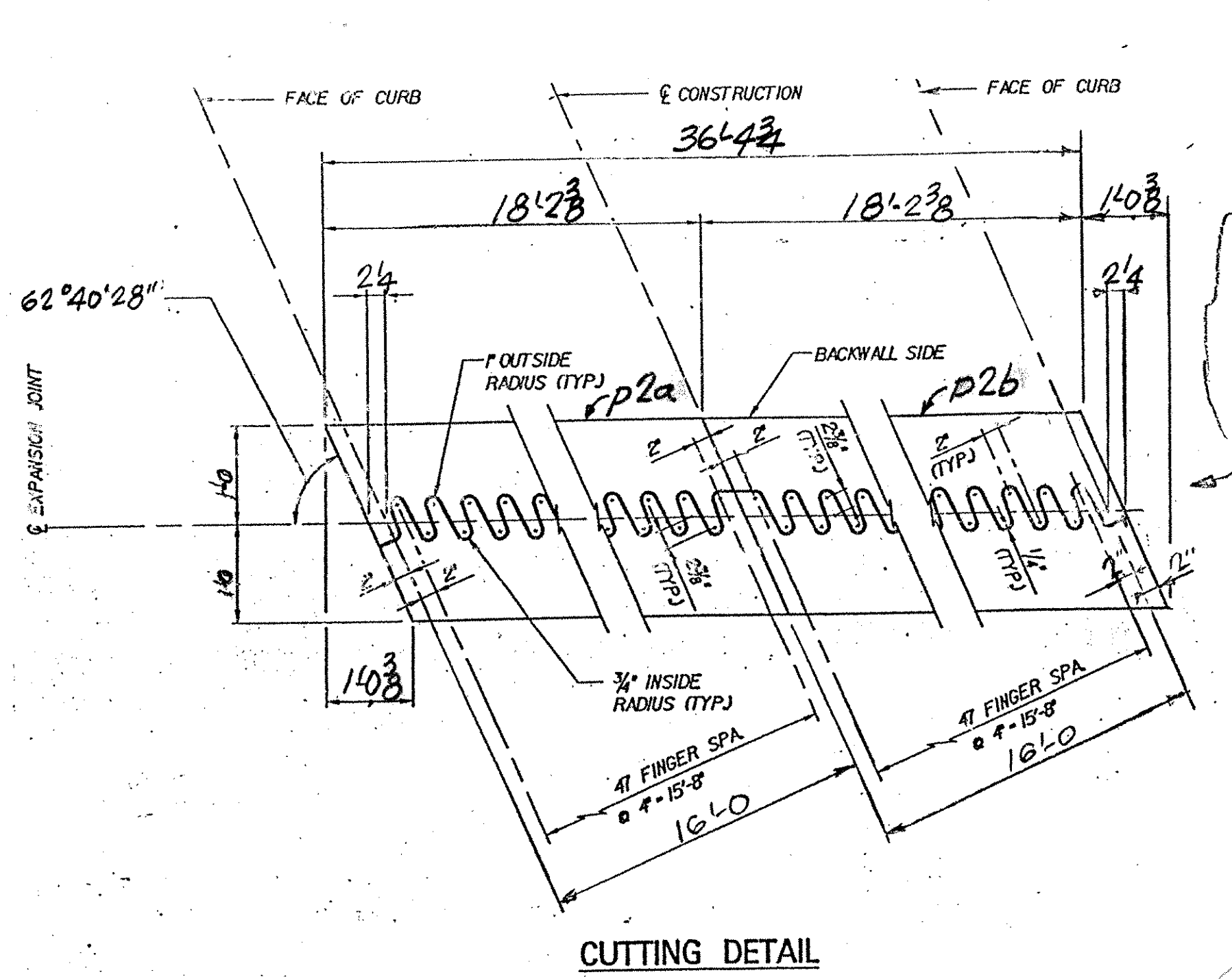


EJ2-N-ONE REQ'D @ ABUT. 2 - BRIDGE 48N

18.01  
- 8.45  
- 8.74

ABM INFO		SHOP BILL				JOB NO.	DRG. NO.	
PAGE	LINE	NO.	DESCRIPTION	FT	IN	REMARKS	WEIGHT	
			EXP. JNT ASSY	41	0E	EJ2-N	-	
	1		R 24x24	19	2 3/4	pl2	ASHTO M1270-6450	
	1		DO	19	2 3/4	pl2b	DO	
	1		L 8x8x1'	40	8 1/2	pl2a		
	1		DO	40	9 1/2	pl2b		
	10		R 1/2 x 8	10		bcl		
	10		R 1/2 x 6	10		bcl		
	140		1/4" H.S. BOLTS	22		tbl		
	140		3/4" ANG. FERRULES	22		tbl		
	18		3/4" ANG. STUDS	10		mcl		
	1		PRE-FORMED FABR	42		0mf1	3PLY PER SURFACE TOT. 07	
	2		EVOL. RUBBER	41		0E	ASHTO SPEC. M1198-TYPE B	
	40		1/4" THREADED RODS	6		TS1		
	80		1/4" HEX NUTS					
	80		BAR 3 x 3/8	3		WI	WASHER	
	5		R 1/2 x 9	9		API	NOT GALV.	
	20		3/4" ANG. STUDS			mcl		
	12		L 4 x 4 x 2	1		sa1		
	12		3/8" H.S. BOLTS	4 1/2			W/WASH	
	CURBS							
	2		R 3/4 x 18	2		cp1		
	2		R 1/2 x 6 1/4	1		cp2a		
	2		R 1/2 x 12 1/4	2		cp2b		
	2		R 3/4 x 18	2		cp2		
	2		R 1/2 x 5 1/2	1		cp2a		
	2		R 1/2 x 12 1/4	2		cp2b		
	2		R 3/4 x 11 3/8	2		cp3		
	2		R 1/2 x 5 1/2	1		cp3a		
	2		R 3/4 x 11 3/8	2		cp4		
	2		R 1/2 x 4 1/4	1		cp4a		
	2		R 1/2 x 8 1/2	2		cp5		
	2		R 1/2 x 7 1/4	2		cp6		
	16		3/8" H.S. BOLTS	3		tbl		
	36		1/4" ANG. FERRULES			tbl		
	12		3/4" ANG. STUDS	10		mcl		
	12		3/8" H.S. BOLTS	22		mcl		
	28		3/4" ANG. STUDS	7		mcl		
	4		2 1/2 x 3 1/2 x 1/2	1		tbl		
	12		R 1/2 x 5 1/2	5 1/2		sp1		
	12		R 1/2 x 4 1/2	5 1/2		sp2		



TVGA  
Engineering, Surveying, P.C.

NO EXCEPTIONS TAKEN  REJECTED  
 FURNISH AS CORRECTED  
 REVISE AND RESUBMIT

ENGINEER has reviewed Shop Drawings and Samples and other data which Contractor is required to submit, only for conformance with the specifications given in the Contract Documents and hereby certifies that the work shown on the drawings and samples is in accordance with the specifications and for coordination of the work of all trades.

BY: Pete W. S.T.  
DATE: 7/9/01

PRIOR TO GALVANIZING ALL CORNERS AND EDGES OF STEEL PLATES SHAPES, ETC., SHALL BE GROUND TO A 1/16" RADIUS.

PAY ITEM 516.10

OUT FOR APPROVAL	3-14-01								
OUT FOR APPROVAL									
ISSUED TO SHOP									
FIELD & OFFICE									

REV.	REMARKS	DATE	DWN	CHK	APP	Q.A.	NO.	DIA.	LGT	TYPE	WASHER
	PROJECT NO. IM-089-2(26) STATE BRIDGE NO. 48N										
	MATERIAL: ASHTO ELECTRODES: PER PROC HOLES: AS NOTED SHOP BOLTS: 3/8"										
	SURFACE PREP. & PAINT:										
	GALVANIZED AFTER FAB. U.N.										
	DESCRIPTION: EXP. JNT - ABUT. 2										
	JOB: BRIDGE 48N										
	I 89 OVER LITTLE RIVER										
	MIDDLESEX-BOLTON, VT.										
	CUSTOMER: WINTERSET INC.										
	CASCO BAY STEEL STRUCTURES, INC.										
	75 SPRING HILL ROAD SACO, MAINE 04072										
	PHONE (207) 282-7360 FAX. (207) 282-1179										
	JOB NO. 12548N										
	DRG. NO. J2										
	REV. <input type="checkbox"/>										