

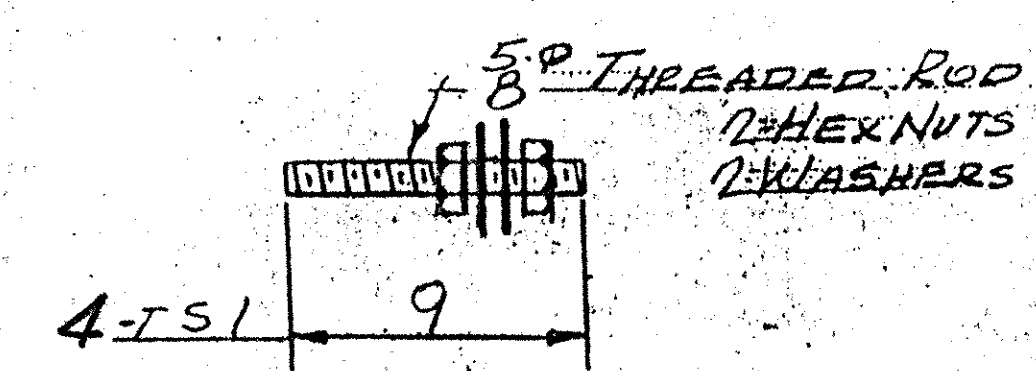
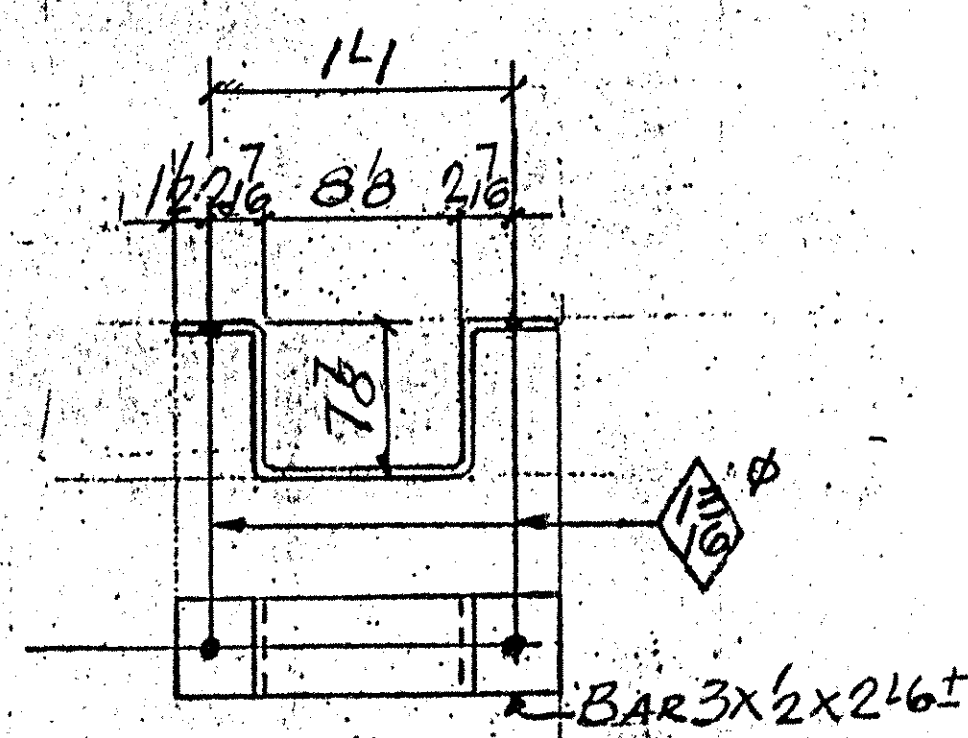
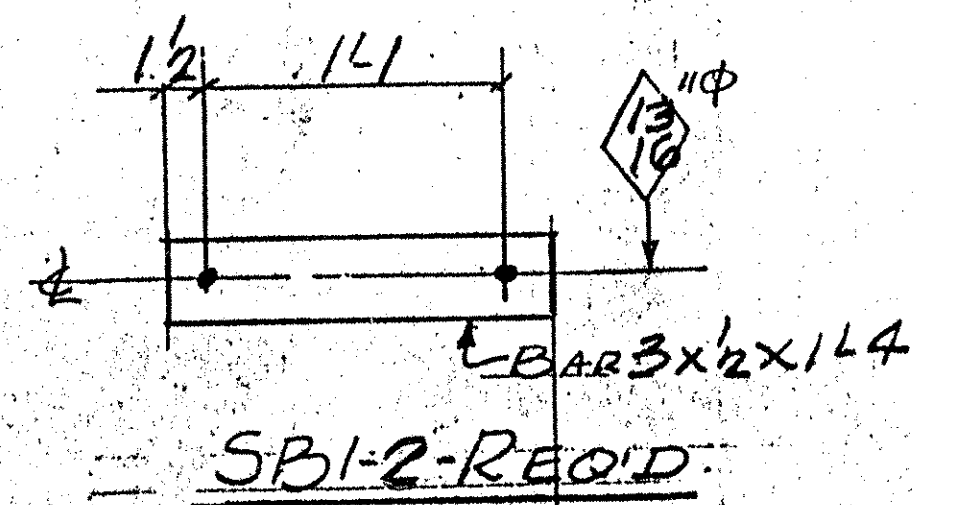
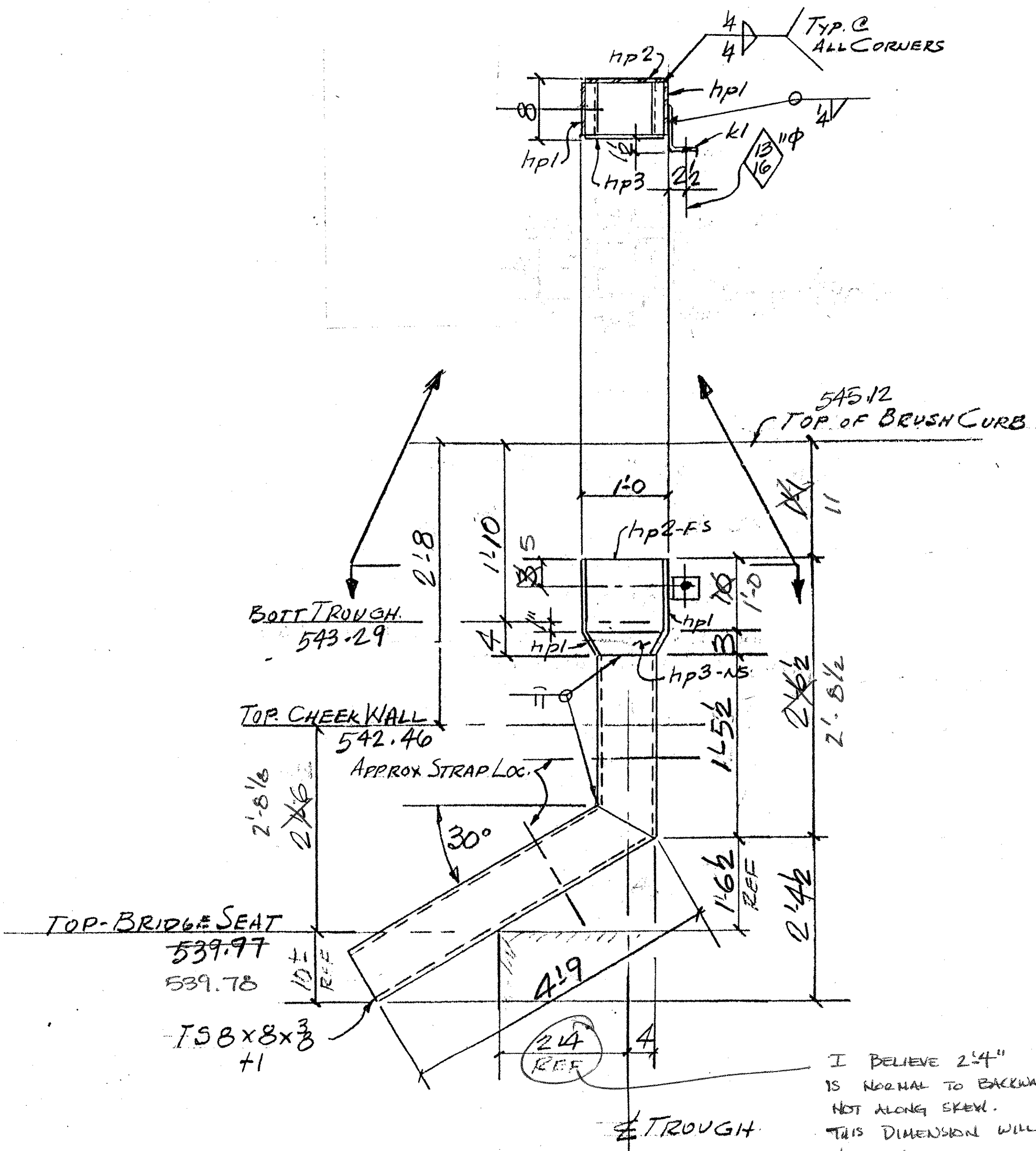
ADM INFO		SHOP BILL				JOB NO.	DRG. NO.		
PAGE	LINE	NO.	DESCRIPTION	FT	IN	ASSEM. MARK	SHIPPING MARK	REMARKS	WEIGHT
		1	DOWN SPOUT	50		D435			
37.69		1	TSB X 8 X 3	6	3 1/2			ASSEMBLY APPROX A501	230.14
9.29		2	R 3 X 7 1/4	1	7 3/8	HP1		BEND	24.06
14.3		1	R 3 X 1 1/4	1	7	HP2			12.88
3.93		1	R 3 X 3		1 1/4	HP3			3.59
16.2		1	L 6 X 4 X 1/2		3	R1			7.05
51		2	BAR 3 X 1/2	2	6 1/2	SA1		BEND	25.5
51		2	DO	1	4	SBI			13.6
1044		4	5/8" T HREADED ROD	9		TS1		PER SUBSET 71409	40
			B. 3/8" HEX NUTS						
			B. 3/8" WASHERS						
		4	EPOXY GROUT					MULTI LINE MUT-HY-150 SYSTEM	
		43	DOWN SPOUT						322.87

**TVGA**  
Engineering, Surveying, P.C.

NO EXCEPTIONS TAKEN  REJECTED  
 FURNISH AS CORRECTED  
 REVISE AND RESUBMIT

ENGINEER has reviewed the drawings and stamps and other data which Contractor is required to submit, only for conformance with the information given in the Contract Documents and compatibility with the design concept of the completed Project as a functioning whole as indicated in the Contract Documents. Such review does not extend to means, methods, techniques, sequences or procedures of construction or to safety precautions and programs incident thereto. Contractor is responsible for dimensions to be confirmed and correlated at the job site, for information that pertains solely to the fabrication processes or to techniques of construction; and for coordination of the work of all trades.

BY: Pat W. St  
DATE: 2/13/01



DAY ITEM 506.60

OUT FOR APPROVAL	1/26/01									
OUT FOR APPROVAL										
ISSUED TO SHOP										
FIELD & OFFICE										
REV. REMARKS	DATE	DNM	CHK	APP	Q.A.	NO.	DIA.	LGT	TYPE	WASHER
PROJECT NO. <u>IM-089-2(26) STATE BRIDGNO. 435</u>										
MATERIAL <u>A570</u> ELECTRODES <u>PER PROC</u> HOLES <u>AS NOTED</u> SHOP BOLTS:										
SURFACE PREP. & PAINT:										
<u>GALVANIZED AFTER FAB.</u>										
DESCRIPTION: <u>DOWNSPOUTS-ABUT. 1.</u>	DRAWN BY	DATE								
JOB: <u>BRIDGE 435</u>	JPF	1-01								
<u>I 89 OVER U.S. ROUTE 2</u>	CHKD BY	EJ.								
<u>MIDDLESEX-BOLTON VT</u>	APPROV BY	Q.A.								
CUSTOMER: <u>WINTER SET INC.</u>	JOB NO.	DRG. NO.								
<u>CASCO BAY STEEL STRUCTURES, INC.</u>	124435	DS1								
75 SPRING HILL ROAD SACO, MAINE 04072	PHONE (207) 282-7360	FAX (207) 282-1179								

2.35' 56" + 5.57

3.13 - .87

328'

327.37

4 1/2' 16.2