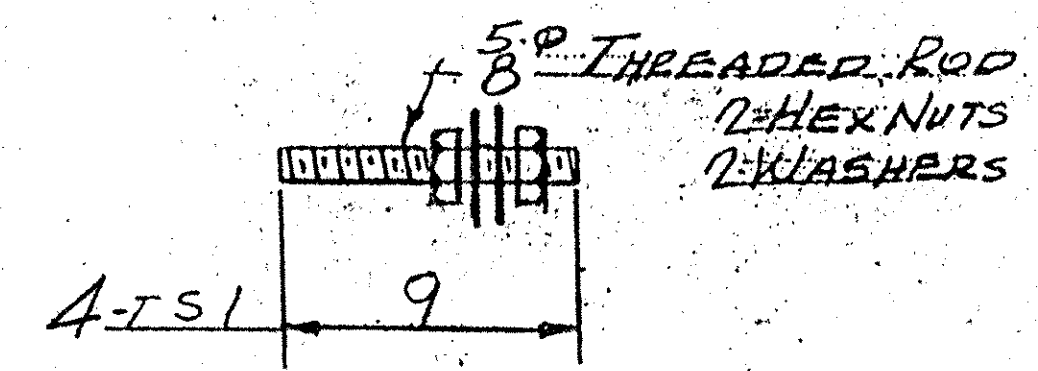
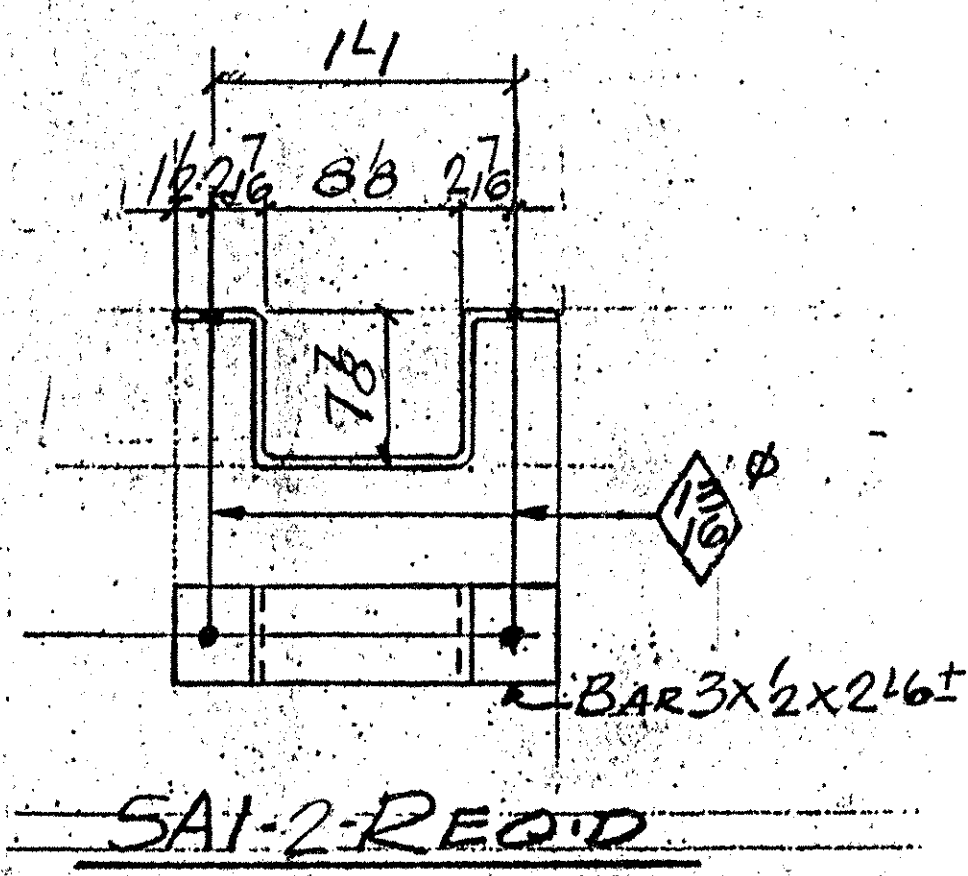
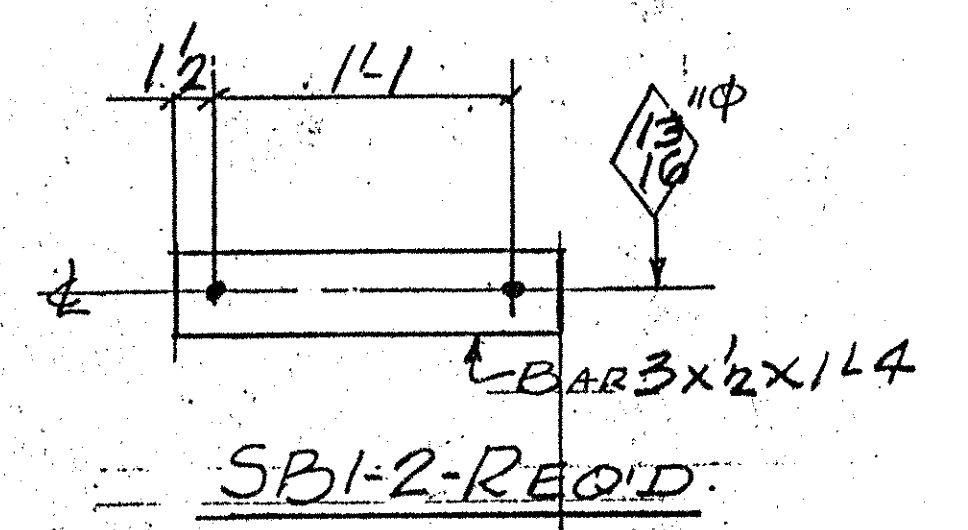


D50S-ONE REQ'D.

THIS IS NORMAL TO BACKWALL, NOT ALONG DRAIN. THIS DIMENSION WILL NEED TO BE CHECKED. THIS MAY AFFECT OTHER DIMENSIONS ON THE DOWNSPOUT.



TVGA
Engineering, Surveying, P.C.

NO EXCEPTIONS TAKEN REJECTED
 FURNISH AS CORRECTED
 REVISE AND RESUBMIT

ENGINEER has reviewed Shop Drawings and Samples and other data which Contractor is required to submit, for performance with the information given in the Contract Documents and compatibility with the design concept of the Contract Documents. Such review is not intended to insure, construction or to safety precautions and programs incident thereto. Contractor is responsible for dimensions to be confirmed and correlated at the job site; for information that construction and for coordination of the work of all trades.

BY: PLH
DATE: 4/19/01

ABM INFO		SHOP BILL				JOB NO.	DRG. NO.		
PAGE	LINE	NO.	DESCRIPTION	FT	IN	ASSEM. MARK	SHIPPING MARK	REMARKS	WEIGHT
		1	DOWNSPOUT	5	10		D50S		
37.61	26.39	1	158x8x3/8	6	3	f1		ASTM A500	330.19
	9.24	2	23x74	1	13	hp1		BEND	30.99
	14.3	1	23x114	1	10	hp2			15.99
	2.83	1	23x3	1	14	hp3			3.59
	16.2	1	L6x4x1/2	3	11	hp3			4.05
	5.1	2	BAR 3x1/2	2	6		SAI	BEND	29.50
	5.1	2	DO	1	4		SBI		
1.044		4	5/8 THREADED ROD	9			TS1	PER SUBJECT 7/408	13.59
		8	5/8 HEX NUTS						4.0
		8	3/4 WASHERS						
		4	EPOXY GROUT				FIELD	MULTI-LINE SYSTEM	
		50	S DOWN SPOUT						319.37

PAY ITEM 506.60

OUT FOR APPROVAL	2-2-01								
OUT FOR APPROVAL									
ISSUED TO SHOP									
FIELD & OFFICE									

REV. REMARKS DATE DWN CHK APP. Q.A. NO. DIA. LGT TYPE WASHER

PROJECT NO. TM-089-2(26) STATE BRIDGEO. 50S

MATERIAL: A500 ELECTRODES: 6025 HOLES: AS NOTED SHOP BOLTS:

SURFACE PREP. & PAINT: GALVANIZED AFTER FAB.

DESCRIPTION: <u>DOWNSPOUT - ABUT. 1</u>	DRAWN BY	DATE
JOB: <u>BRIDGE 50S</u>	JPF	1-01
<u>IB9 OVER U.S. ROUTE 2</u>	CHKD BY	EJ.
<u>MIDDLESEX-BOLTON VT</u>	APPROV BY	
	Q.A.	
CUSTOMER: <u>WINTER SET INC.</u>	JOB NO.	DRG. NO.
CASCO BAY STEEL STRUCTURES, INC.	<u>127-50S</u>	<u>DS1</u>
75 SPRING HILL ROAD SACO, MAINE 04072		
PHONE (207) 282-7360 FAX (207) 282-1179		

235.56
23.13
17.88
27.54
3.13
330.49
326.91
330 1/2 160
A = 12 1/2