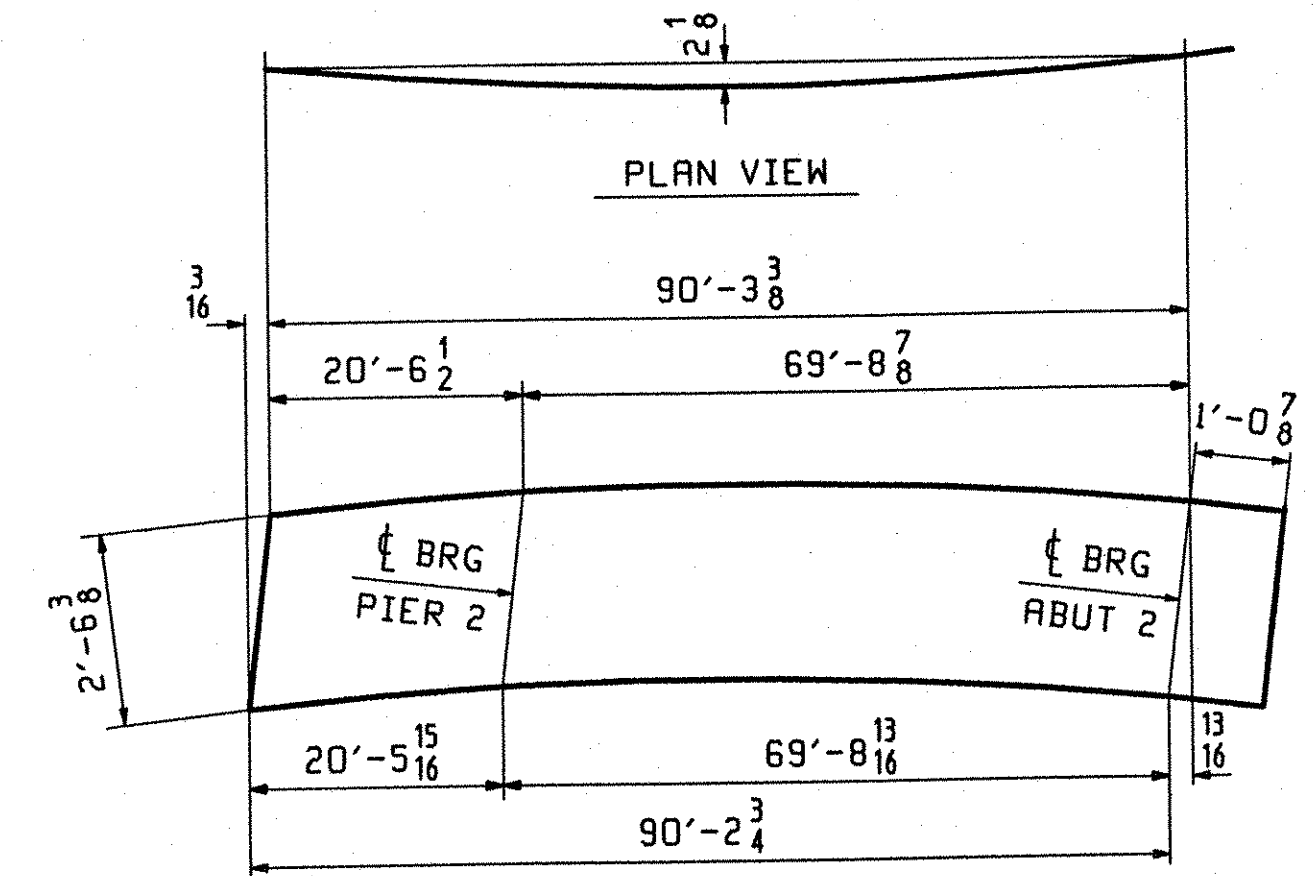
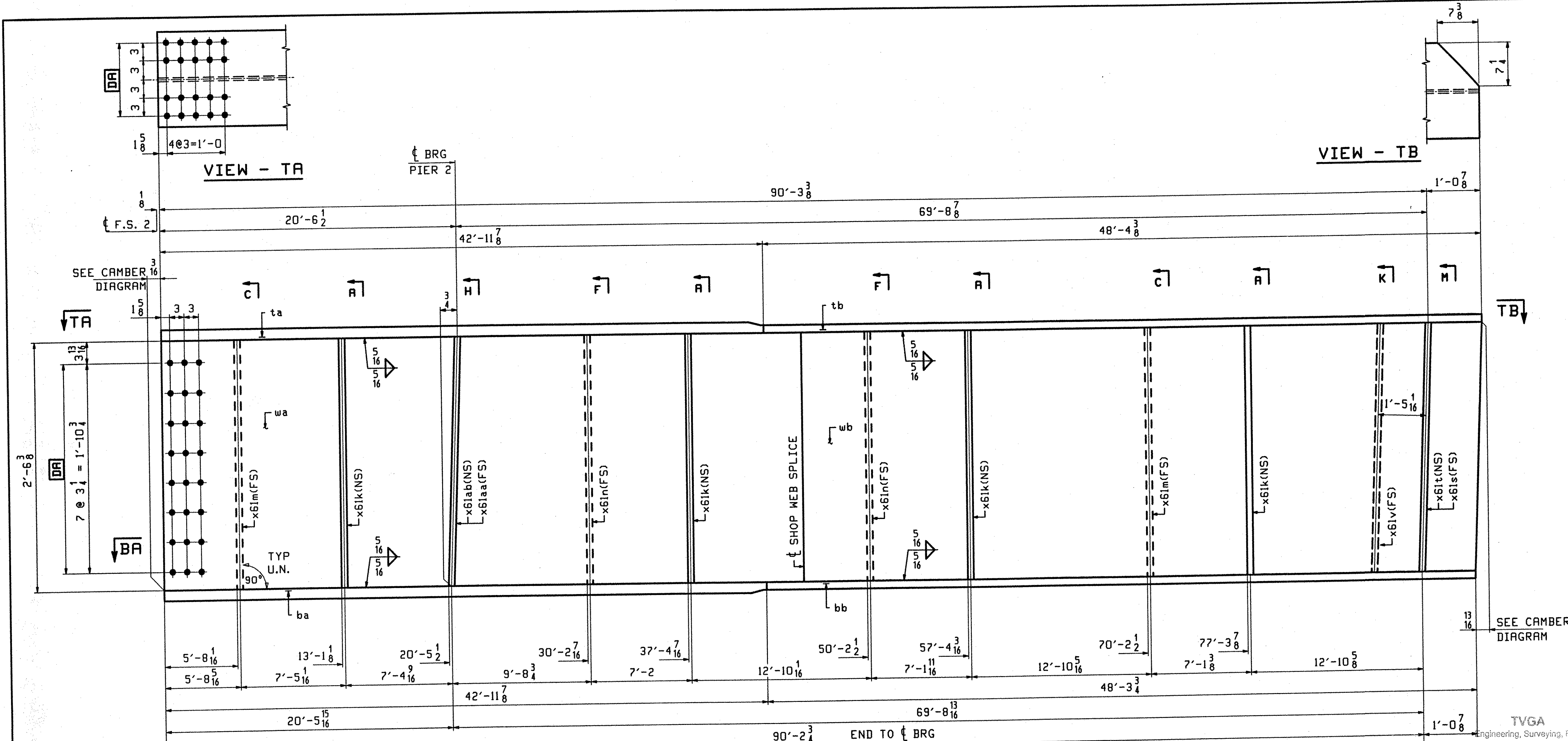


ABM INFO	SHIP	BILL OF MATERIAL		JOB NO.	DRAWING NO.	REV.			
PAGE	LINE	MARK	QTY	MARK	MATERIAL	LENGTH FT INCHES	REMARKS	WT	PROCUREMENT NOTES
		G4C	1		GIRDER				16091
602	S	1	wa	PL	1/2 x 31 1/4	45 7/8	(M270-50WT2) (H2-3)		
602	L	1	wb	PL	1/2 x 31 1/4	45 7/8	(M270-50WT2) (H2-3)		
601	A	1	ta	PL	1/4 x 16	42 11/8	(M270-50WT2) (H2-3)		
601	U	1	tb	PL	1/4 x 16	48 4 3/8	(M270-50WT2) (H2-3)		
601	A	1	ba	PL	1/4 x 16	42 11/8	(M270-50WT2) (H2-3)		
601	U	1	bb	PL	1/4 x 16	48 3 3/4	(M270-50WT2) (H2-3)		
603	N	2	x61m	PL	1/2 x 5	2 6 3/8	(M270-50W)		
603	N	4	x61k	PL	1/2 x 5	2 6 3/8	(M270-50W)		
603	H	1	x61ab	PL	7/8 x 7 3/4	2 6 3/8	(M270-50W)		
603	M	1	x61aa	PL	7/8 x 7 3/4	2 6 3/8	(M270-50W)		
603	N	2	x61n	PL	1/2 x 5	2 6 3/8	(M270-50W)		
603	M	1	x61t	PL	7/8 x 7 3/4	2 6 3/8	(M270-50W)		
603	H	1	x61s	PL	7/8 x 7 3/4	2 6 3/8	(M270-50W)		
603	M	1	x61v	PL	7/8 x 7 3/4	2 6 3/8	(M270-50W)		



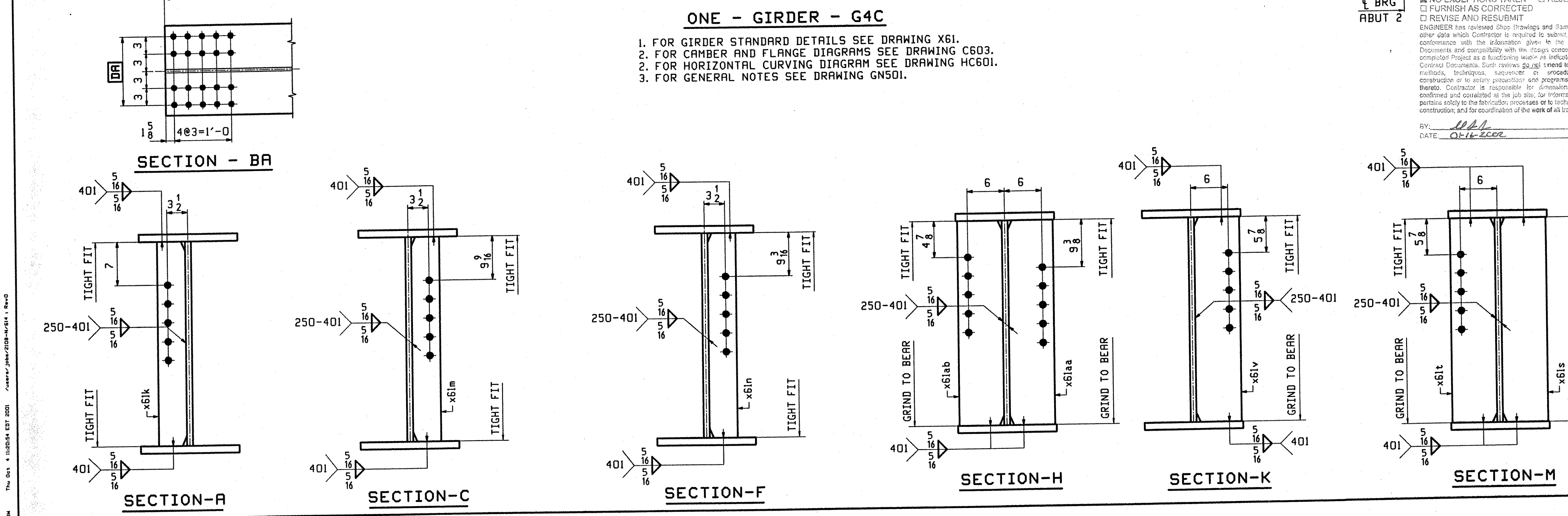
ONE - GIRDER - G4C

1. FOR GIRDER STANDARD DETAILS SEE DRAWING X61.
2. FOR CAMBER AND FLANGE DIAGRAMS SEE DRAWING C603.
3. FOR HORIZONTAL CURVING DIAGRAM SEE DRAWING HC601.
4. FOR GENERAL NOTES SEE DRAWING GN501.

TVGA Engineering, Surveying, P.C.
 NO EXCEPTIONS TAKEN
 FURNISH AS CORRECTED
 REVISE AND RESUBMIT
 ENGINEER has reviewed Shop Drawings and Samples and other data which Contractor is required to submit for conformance with the information given in the Contract Documents and compliance with the design concept of the completed Project as a functioning work as indicated in the Contract Documents. Such reviews go only to meet, methods, techniques, sequence or procedures of construction or to safety precautions and programs included therein. Contractor is responsible for dimensions to be confirmed and controlled at the job site, for information that pertains solely to the fabricator's processes or to techniques of construction, and for coordination of the work of all trades.
 BY: W.B.L.
 DATE: 01-11-2008

OUT FOR APPROVAL	10-9-01								
OUT FOR APPROVAL									
ISSUED TO SHOP									
FIELD & OFFICE									

REV.	REMARKS	DATE	DWN	CHK	APP	Q.A.	NO.	DIA.	LGT	TYPE	WASHER
	MATERIAL: M270 GR 50W							15/16 Ø (UN)			7/8 Ø (UN)
	SURFACE PREP. & PAINT: -STEEL WITHIN 10'-0 OF ABUT 2 SHALL BE PAINTED (SEE GN501) -ALL OTHER STEEL SHALL BE BLAST CLEANED AND LEFT UNPAINTED.										
DESCRIPTION: GIRDER - G4C		DRAWN BY: BW		DATE: 09/25		JOB: BRIDGE NO. 50N		CHKD BY: DO		DATE: 09/28	
I-89 NB OVER U.S. ROUTE 2		APPROV BY: W. J. GATTI		SUPERVISOR: W. J. GATTI		TOWN OF MIDDLESEX-BOLTON, VERMONT		PROJ NO. IM-089-2(26)		CUSTOMER: VERMONT AGENCY OF TRANSPORTATION	
CASCO BAY STEEL STRUCTURES, INC.		JOB NO. 123-50N		DRG. NO. 614		75 SPRING HILL ROAD		SACO, MAINE 04072		REV. △	
PHONE (207) 282-7360		FAX (207) 282-1179									



The City of Middlesex, Vermont