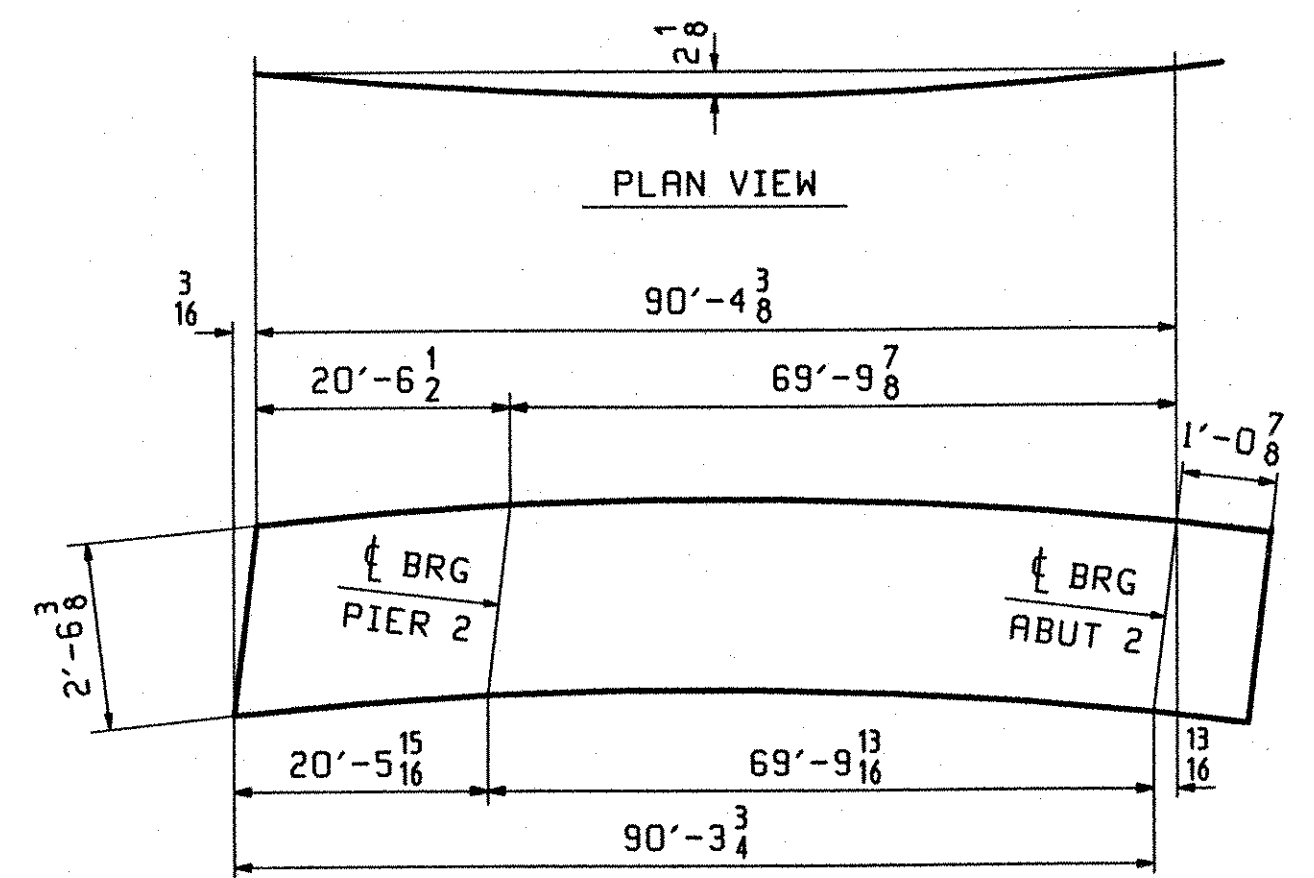
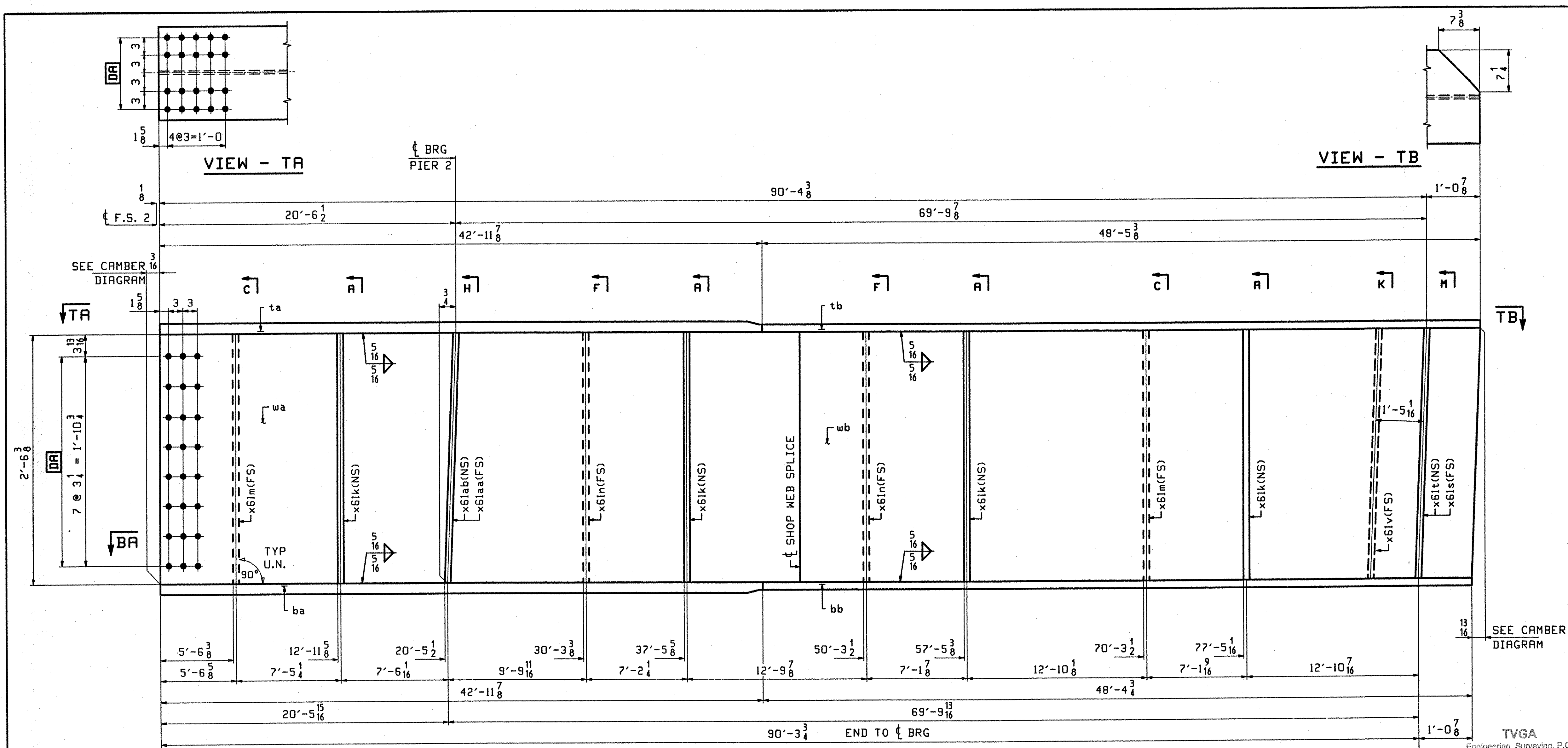


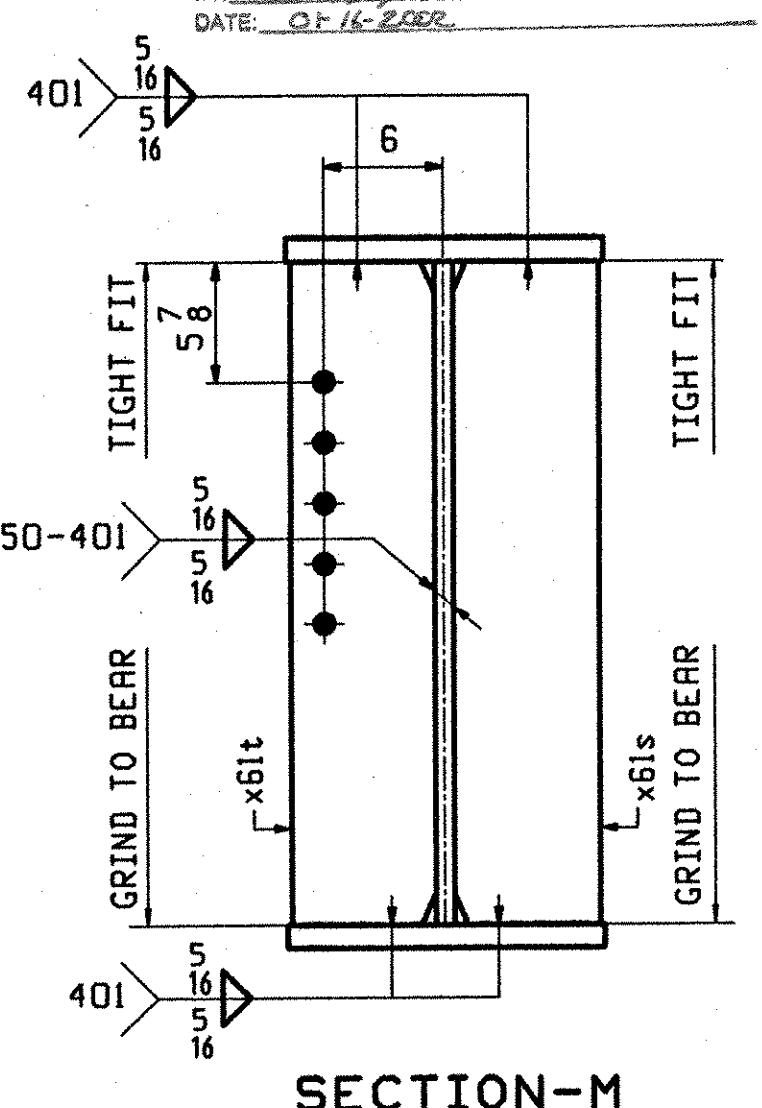
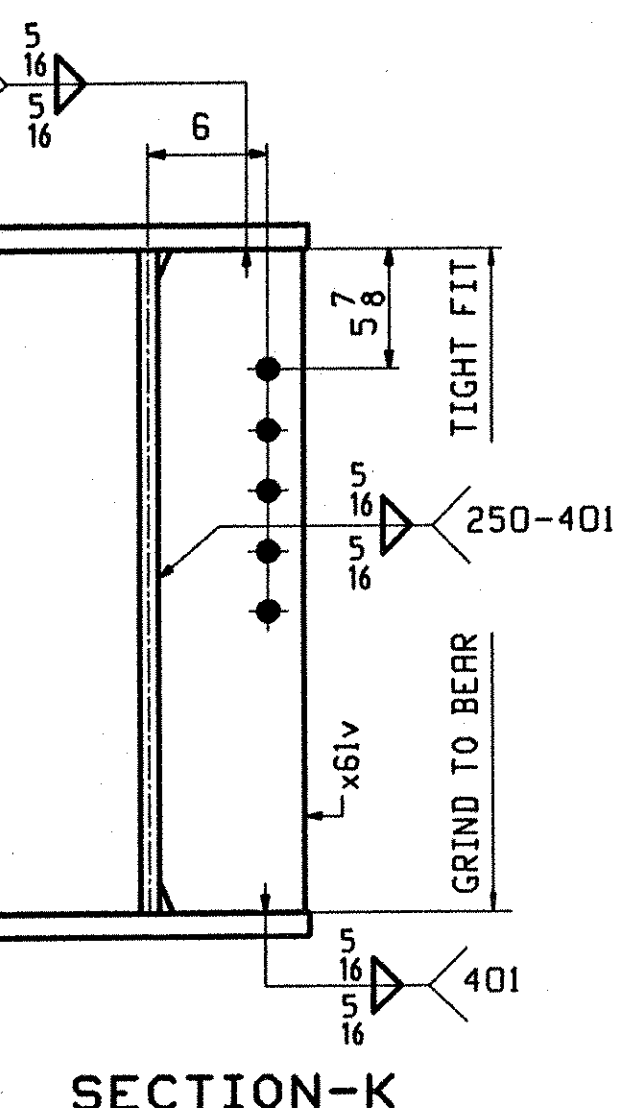
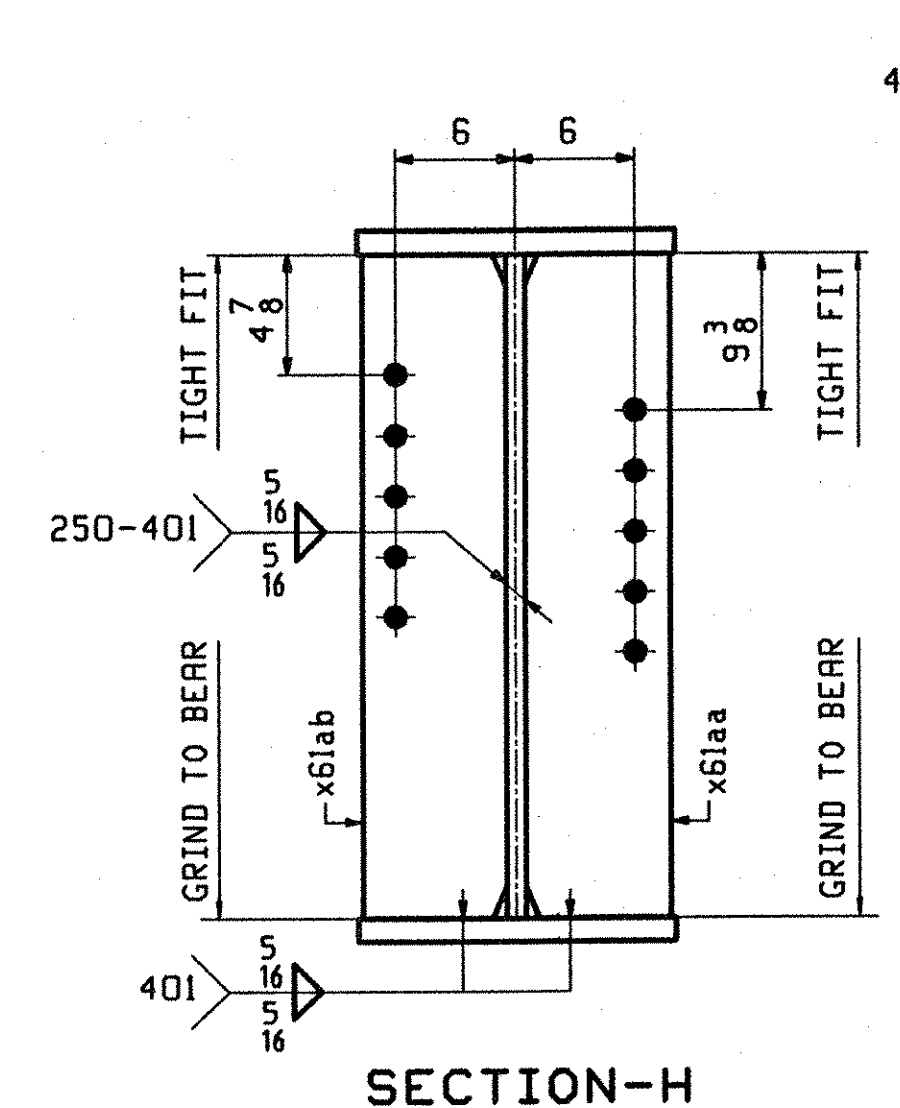
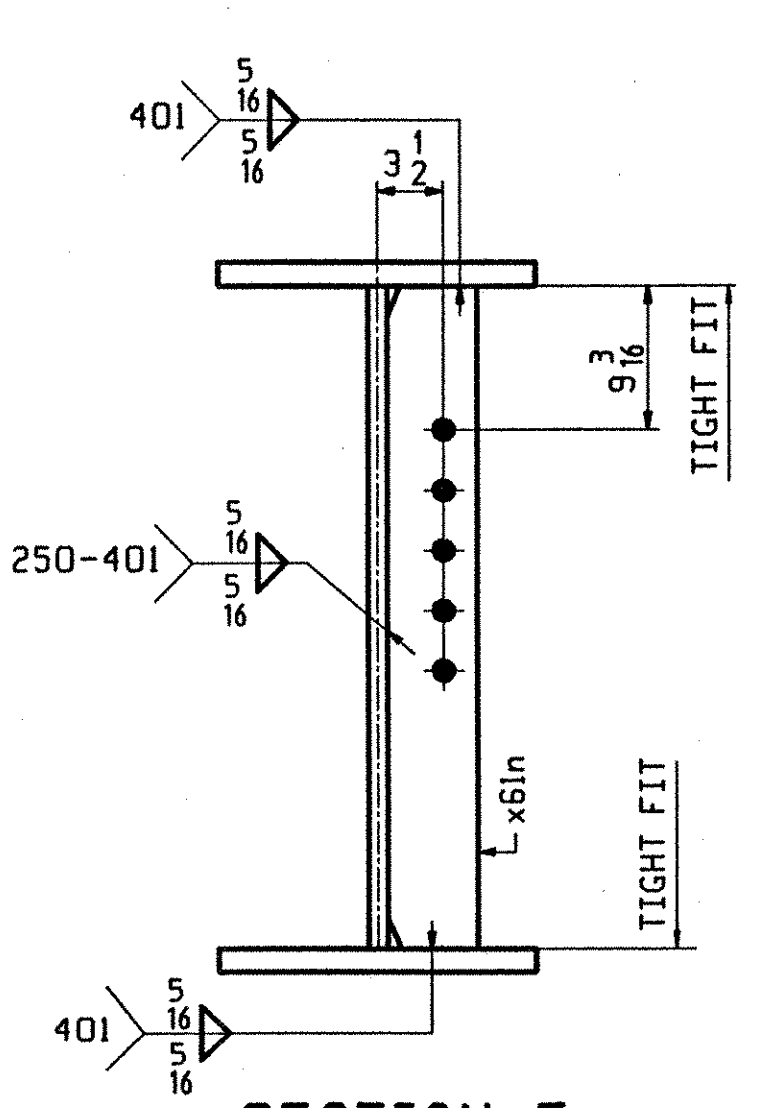
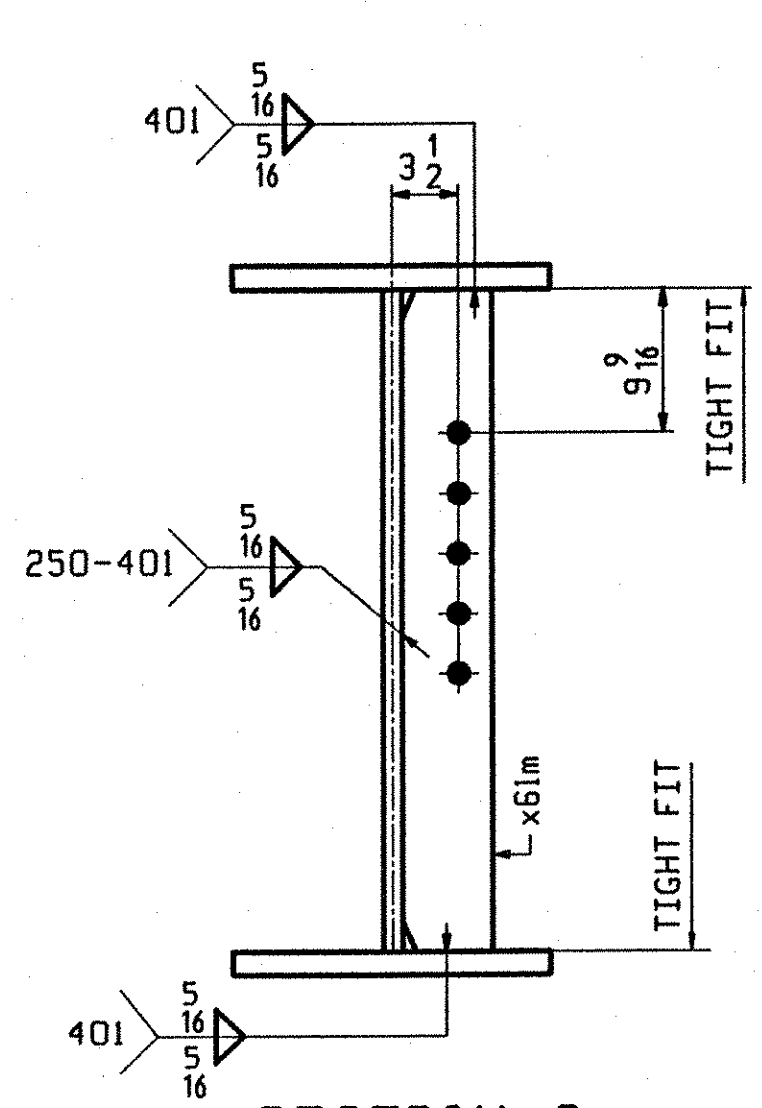
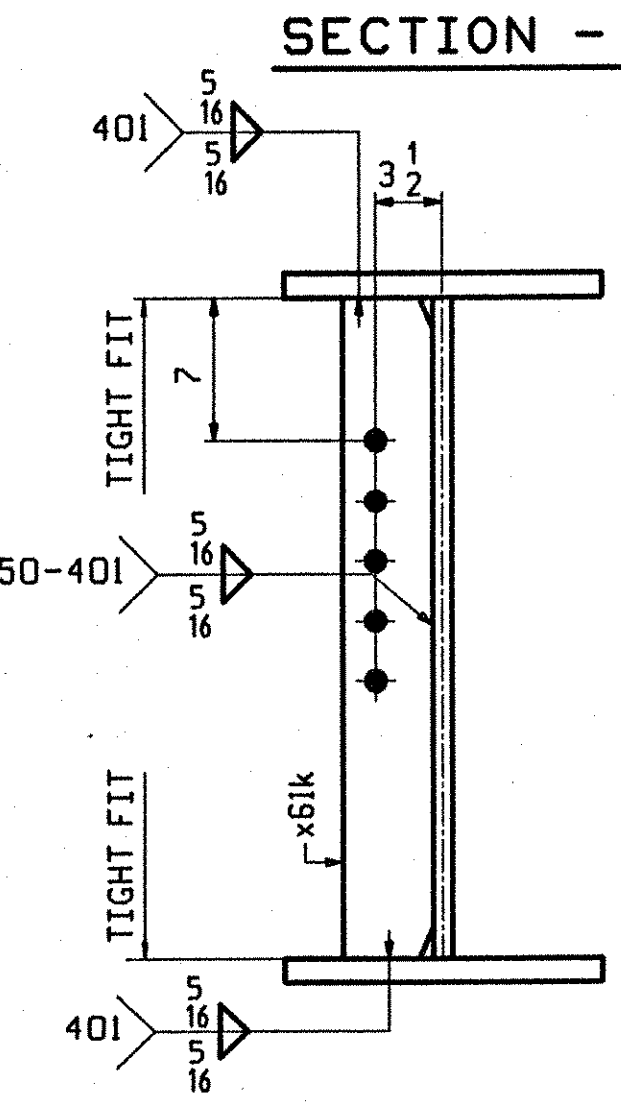
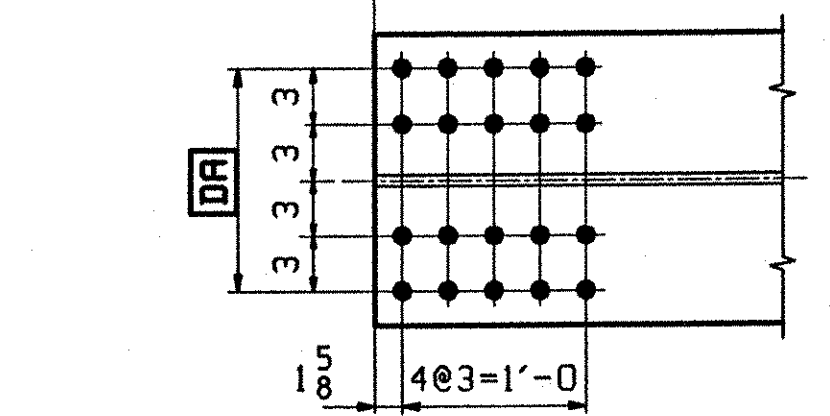
BILL OF MATERIAL						JOB NO.	DRAWING NO.	REV.
						613	613	
ABM INFO	SHIP	MARK	QTY	MATERIAL	LENGTH	REMARKS	WT	PROCUREMENT NOTES
PAGE	LINE	MARK			FT			
		G3C	1	GIRDER				1S104
602	S	1	wa	PL 1/2x31 1/2	45 7/8	(M270-50WT2) (H2-3)		
602	J	1	wb	PL 1/2x31 1/2	45 9/16	(M270-50WT2) (H2-3)		
601	A	1	ta	PL 1/2x16	42 11/8	(M270-50WT2) (H2-3)		
601	S	1	tb	PL 7/8x16	48 5/8	(M270-50WT2) (H2-3)		
601	A	1	ba	PL 1/2x16	42 11/8	(M270-50WT2) (H2-3)		
601	U	1	bb	PL 7/8x16	48 3/4	(M270-50WT2) (H2-3)		
603	N	2	x61m	PL 1/2x5	2 6/8	(M270-50W)		
603	N	4	x61k	PL 1/2x5	2 6/8	(M270-50W)		
603	M	1	x61ab	PL 7/8x7 1/4	2 6/8	(M270-50W)		
603	M	1	x61aa	PL 7/8x7 1/4	2 6/8	(M270-50W)		
603	N	2	x61n	PL 1/2x5	2 6/8	(M270-50W)		
603	M	1	x61t	PL 7/8x7 1/4	2 6/8	(M270-50W)		
603	M	1	x61s	PL 7/8x7 1/4	2 6/8	(M270-50W)		
603	M	1	x61v	PL 7/8x7 1/4	2 6/8	(M270-50W)		



ONE - GIRDER - G3C

1. FOR GIRDER STANDARD DETAILS SEE DRAWING X61.
2. FOR CAMBER AND FLANGE DIAGRAMS SEE DRAWING C603.
3. FOR GENERAL NOTES SEE DRAWING GN501.

NO EXCEPTIONS TAKEN REJECTED
 FURNISH AS CORRECTED
 REVISE AND RESUBMIT
 ENGINEER has reviewed Shop Drawings and Samples and user data which Contractor is required to submit, gdy for conformance with the information given in the Contract Documents and compliance with the design concept of the Engineer. Such review does not extend to methods, materials, techniques, equipment or procedures of construction or to safety precautions and programs incident thereto. Contractor is responsible for dimensions to be confirmed and controlled at the job site, for information that pertains solely to the fabrication processes or to techniques of construction; and for coordination of the work of all trades.



OUT FOR APPROVAL	10-9-01											
ISSUED TO SHOP												
FIELD & OFFICE												
REV.	REMARKS	DATE	DWN	CHK	APP	Q.A.	NO.	DIA.	LGT	TYPE	WASHER	
	MATERIAL: M270 GR 50W											
	ELECTRODES:											
	HOLES:											
	SHOP BOLTS:											
SURFACE PREP. & PAINT:												
-STEEL WITHIN 10'-0" OF ABUT 2 SHALL BE PAINTED (SEE GN501)												
-ALL OTHER STEEL SHALL BE BLAST CLEANED AND LEFT UNPAINTED.												
DESCRIPTION: GIRDER - G3C										DRAWN BY		DATE
JOB: BRIDGE NO. 50N										BW		09/25
I-89 NB OVER U.S. ROUTE 2										CHKD BY		
I-89 IMPROVEMENTS										DO		09/28
TOWN OF MIDDLESEX-BOLTON, VERMONT										APPROV BY		
TENSOR 2108-N										SUPERVISOR		H. J. GATTI
PROJ NO. IM-089-2(26)										Q.A.		
CUSTOMER: VERMONT AGENCY OF TRANSPORTATION										JOB NO.		DRG. NO.
CASCO BAY STEEL STRUCTURES, INC.										123-50N		613
75 SPRING HILL ROAD										SACO, MAINE 04072		REV.
PHONE (207) 282-7360										FAX. (207) 282-1179		