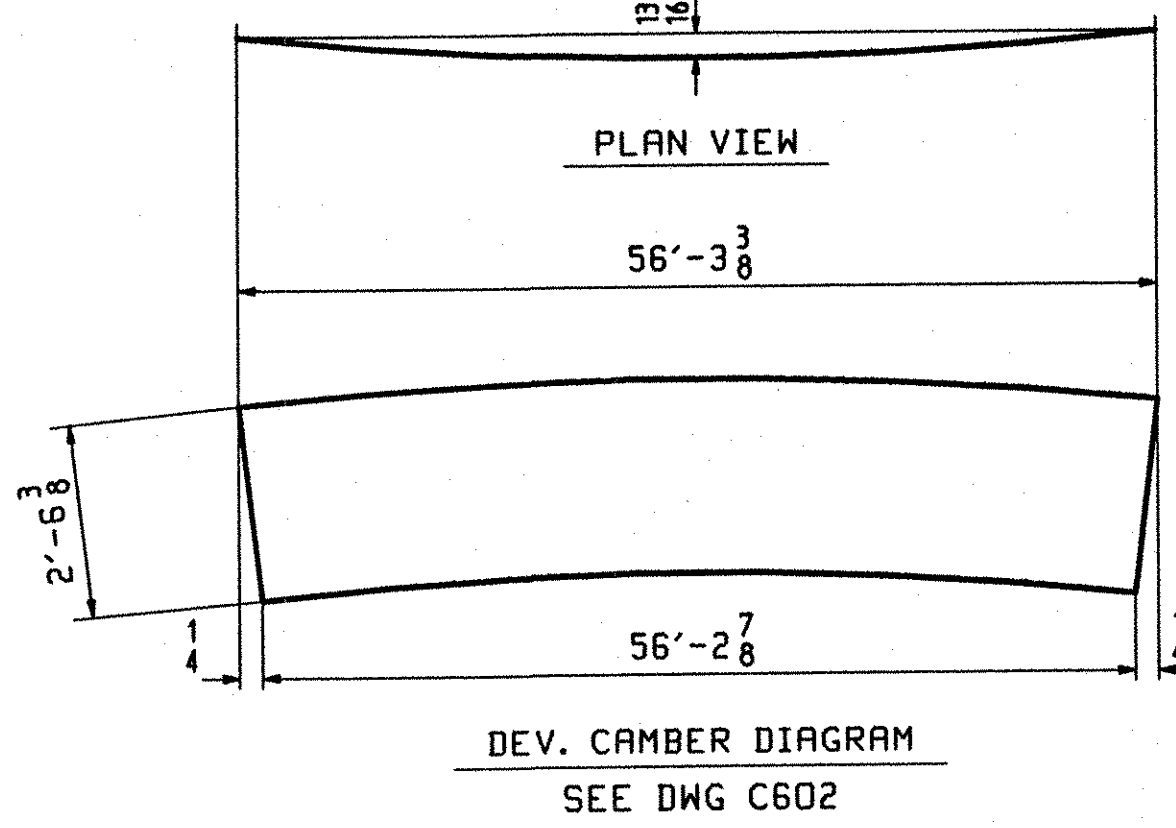
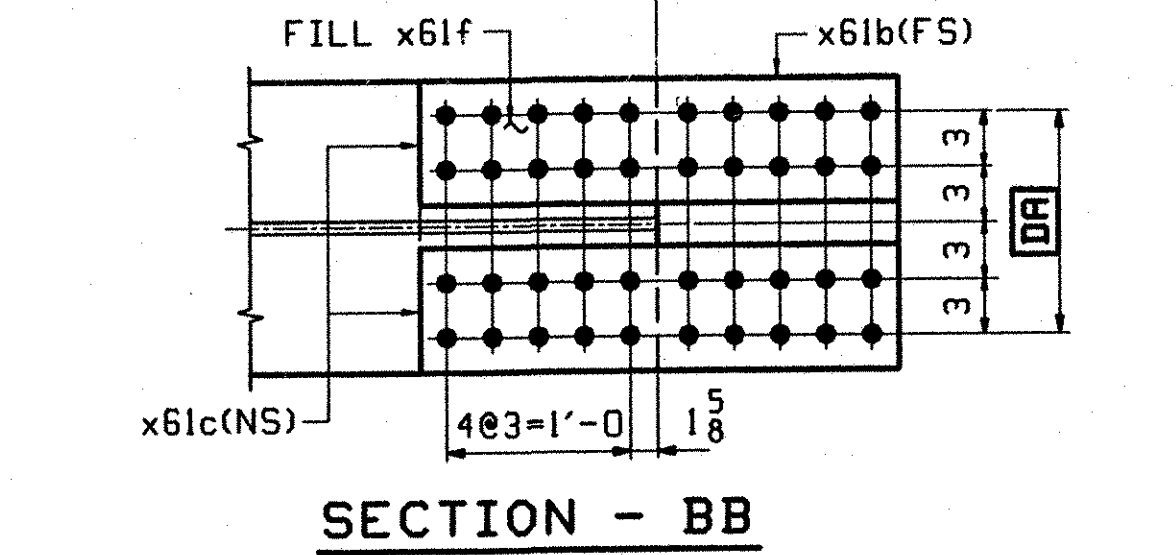
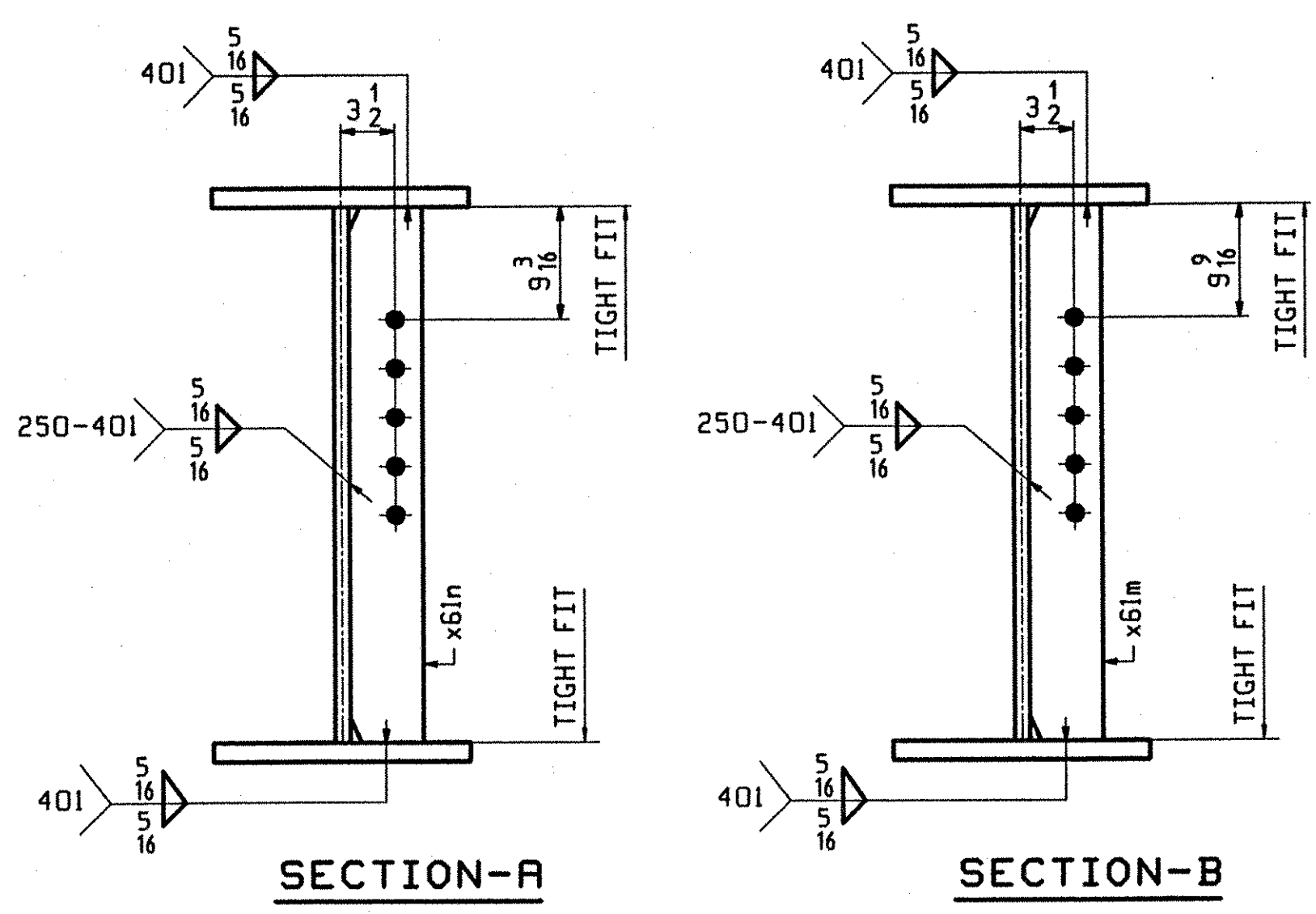


ONE - GIRDER - G5B

1. FOR GIRDER STANDARD DETAILS SEE DRAWING X61.
2. FOR CAMBER AND FLANGE DIAGRAMS SEE DRAWING C602.
3. FOR HORIZONTAL CURVING DIAGRAM SEE DRAWING HC601.
4. FOR GENERAL NOTES SEE DRAWING GN501.



PAGE	LINE	MARK	QTY	MARK	MATERIAL	LENGTH		REMARKS	JOB NO.	DRAWING NO.	REV.
						FT	INCHES				
					GIRDER					610	
		G5B	1							9912	
602	G		1	wa	PL 1/2 x 32 1/4	56	3/8	(M270-50WT2) (H2-3)			
601	Q		1	ta	PL 7/8 x 16	56	3/8	(M270-50WT2) (H2-3)			
601	J		1	ba	PL 1 x 16	56	7/8	(M270-50WT2) (H2-3)			
603	B		4	x61a	PL 1/2 x 26 1/4	1	7	(M270-50WT2) (H2-3)			
603	C		4	x61b	PL 5/8 x 16	2	7	(M270-50WT2) (H2-3)			
603	D		8	x61c	PL 5/8 x 7	2	7	(M270-50WT2) (H2-3)			
603	H		1	x61d	PL 1/4 x 16	1	3/8	(M270-50W) FILL			
603	J		1	x61f	PL 5/8 x 16	1	3/8	(M270-50W) FILL			
603	F		1	x61g	PL 3/8 x 16	1	3/8	(M270-50W) FILL			
603	G		1	x61h	PL 7/8 x 16	1	3/8	(M270-50W) FILL			
603	N		1	x61n	PL 1/2 x 5	2	6 3/8	(M270-50W)			
603	N		1	x61m	PL 1/2 x 5	2	6 3/8	(M270-50W)			

TVGA
Engineering, Surveying, P.C.

NO EXCEPTIONS TAKEN REJECTED
 FURNISH AS CORRECTED
 REVISE AND RESUBMIT

ENGINEER has reviewed Shop Drawings and Samples and other data which Contractor is required to submit, and for conformance with the information given in the Contract Documents and compliance with the design concept of the completed Project as a functioning whole as indicated in the Contract Documents. Such reviews do not extend to means, methods, techniques, sequences or procedures of construction or to safety precautions and programs incident thereto. Contractor is responsible for dimensions to be confirmed and controlled at the job site, for information that pertains solely to the fabrication processes or to techniques of construction, and for coordination of the work of all trades.

BY: *[Signature]*
DATE: 04/16/2008

OUT FOR APPROVAL	10-9-07										
OUT FOR APPROVAL											
ISSUED TO SHOP											
FIELD & OFFICE											

REV.	REMARKS	DATE	DWN	CHK	APP	Q.A.	NO.	DIA.	LGT	TYPE	WASHER
MATERIAL:	M270 GR 50W	ELECTRODES:		HOLES:	15/16 Ø (UN)	SHOP BOLTS:					7/8 Ø (UN)
SURFACE PREP. & PAINT: -STEEL WITHIN 10'-0" OF ABUT 2 SHALL BE PAINTED (SEE GN501) -ALL OTHER STEEL SHALL BE BLAST CLEANED AND LEFT UNPAINTED.											
DESCRIPTION: GIRDER - G5B										DRAWN BY	DATE
JOB: BRIDGE NO. 50N										BW	09/25
I-89 NB OVER U.S. ROUTE 2										CHKD BY	
I-89 IMPROVEMENTS										DO	09/28
TOWN OF MIDDLESEX-BOLTON, VERMONT										APPROV BY	
TENSOR 2108-N										SUPERVISOR	W. J. GATTI
PROJ NO. IM-089-2(26)										Q.A.	
CUSTOMER: VERMONT AGENCY OF TRANSPORTATION											
CASCO BAY STEEL STRUCTURES, INC.										JOB NO.	DRG. NO.
75 SPRING HILL ROAD SACO, MAINE 04072										123-50N	610
PHONE (207) 282-7360 FAX. (207) 282-1179										REV.	△