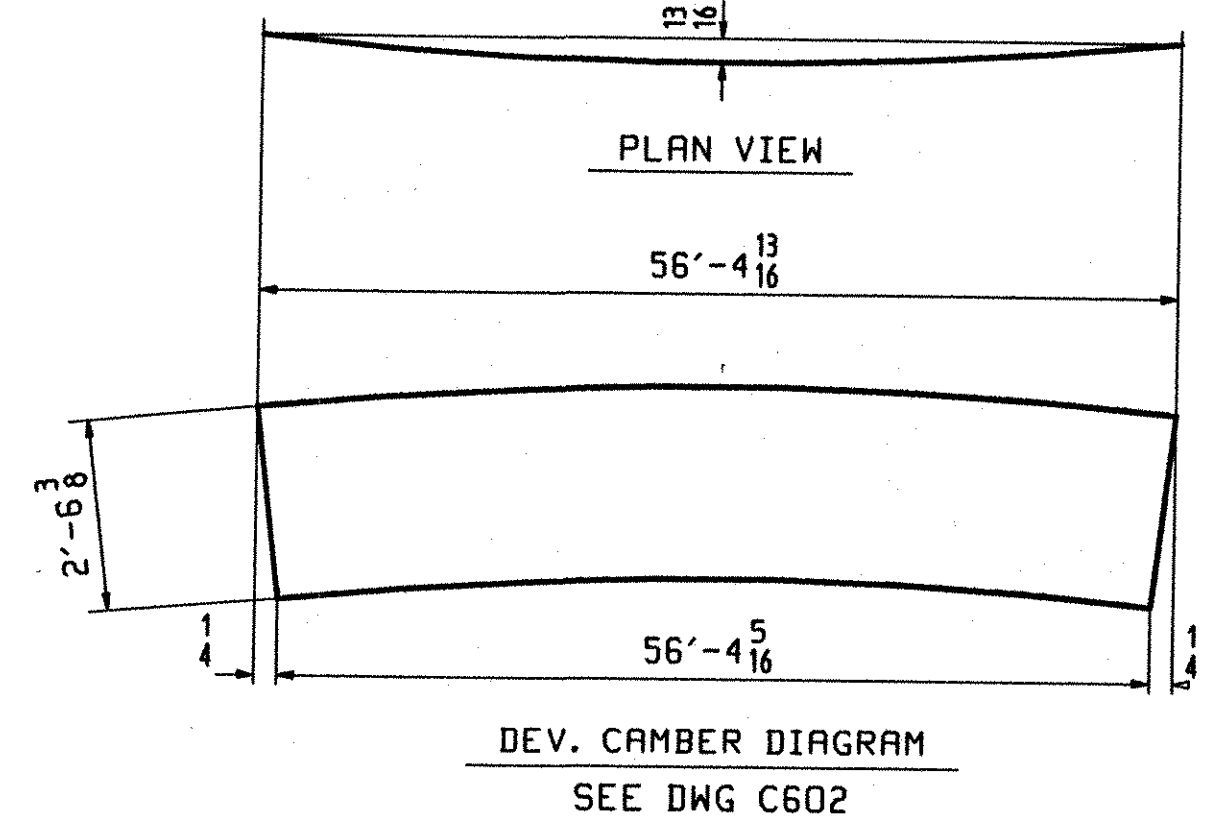
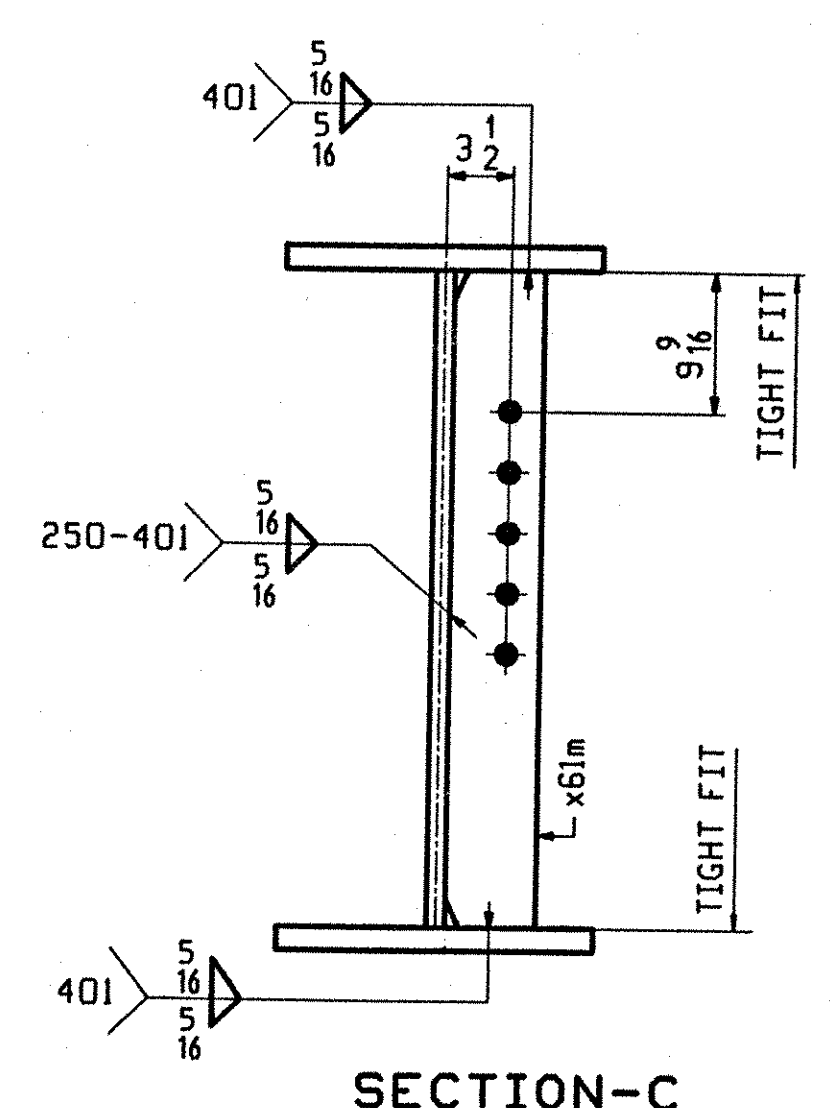
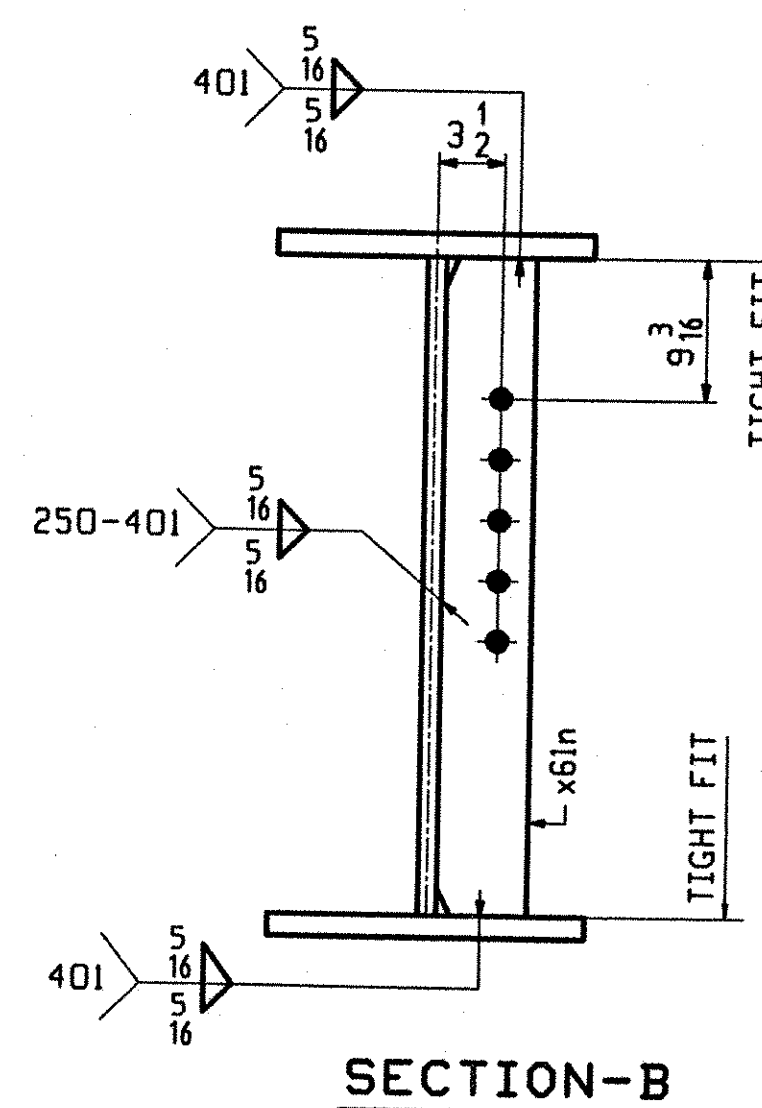
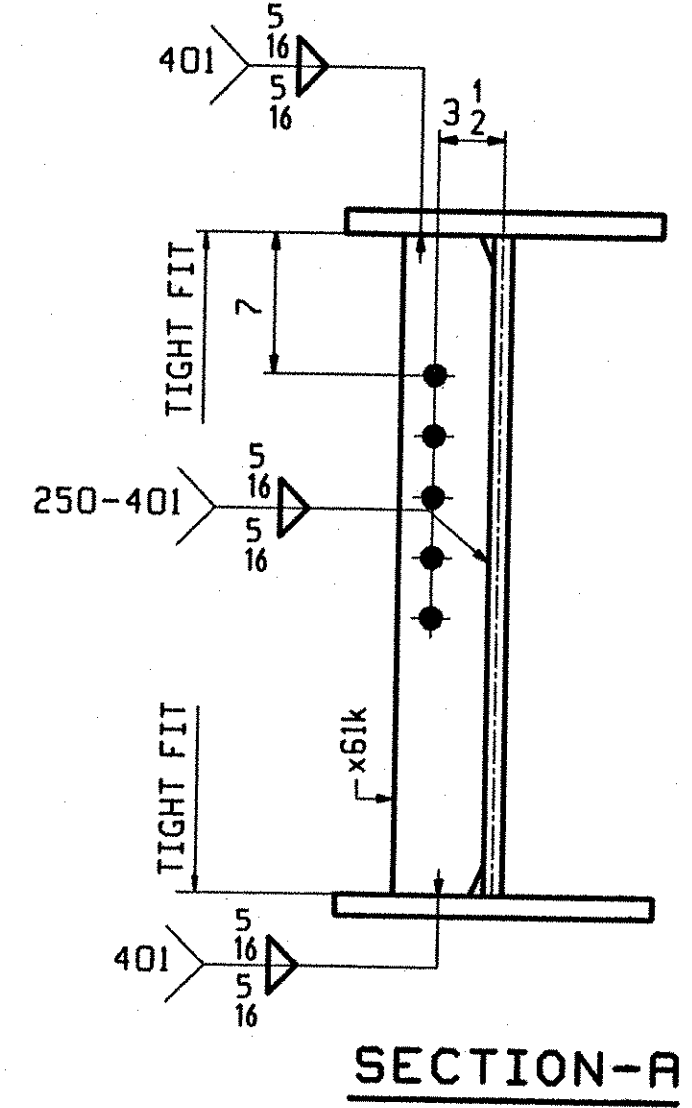


**ONE - GIRDER - G4B**

1. FOR GIRDER STANDARD DETAILS SEE DRAWING X61.
2. FOR CAMBER AND FLANGE DIAGRAMS SEE DRAWING C602.
3. FOR GENERAL NOTES SEE DRAWING GN501.



BILL OF MATERIAL		JOB NO.		DRAWING NO.		REV.			
PAGE	LINE	MARK	QTY	MARK	MATERIAL	LENGTH FT INCHES	REMARKS	WT	PROCUREMENT NOTES
		G4B	1		GIRDER			9980	
602	C		1	wa	PL 1/2 x 32 5/16	56 4 13/16	(M270-50WT2) (H2-3)		
601	N		1	ta	PL 3/8 x 16	56 4 13/16	(M270-50WT2) (H2-3)		
601	G		1	ba	PL 1 x 16	56 4 13/16	(M270-50WT2) (H2-3)		
603	B		4	x61a	PL 1/2 x 26 1/4	1 7	(M270-50WT2) (H2-3)		
603	C		4	x61b	PL 3/8 x 16	2 7	(M270-50WT2) (H2-3)		
603	D		8	x61c	PL 3/8 x 7	2 7	(M270-50WT2) (H2-3)		
603	H		1	x61d	PL 1/2 x 16	1 3 3/8	(M270-50W) FILL		
603	J		1	x61f	PL 3/8 x 16	1 3 3/8	(M270-50W) FILL		
603	F		1	x61g	PL 3/8 x 16	1 3 3/8	(M270-50W) FILL		
603	G		1	x61h	PL 3/8 x 16	1 3 3/8	(M270-50W) FILL		
603	N		1	x61n	PL 1/2 x 5	2 6 3/8	(M270-50W)		
603	N		2	x61k	PL 1/2 x 5	2 6 3/8	(M270-50W)		
603	N		1	x61m	PL 1/2 x 5	2 6 3/8	(M270-50W)		

TVGA  
Engineering, Surveying, P.C.

NO EXCEPTIONS TAKEN REJECTED  
FURNISH AS CORRECTED  
REVISE AND RESUBMIT  
ENGINEER has reviewed Shop Drawings and Samples and other data which contractor is required to submit, only for conformance with the information given in the Contract Documents and compliance with the applicable codes and specifications. The Engineer does not warrant, represent or assume any liability for construction or to safety precautions and programs incident thereto. Contractor is responsible for dimensions to be confirmed and completed at the job site for information that pertains solely to the fabrication processes or to techniques of construction; and for coordination of the work of all trades.

BY: *[Signature]*  
DATE: 01-16-2002

OUT FOR APPROVAL	10-9-01								
OUT FOR APPROVAL									
ISSUED TO SHOP									
FIELD & OFFICE									

REV.	REMARKS	DATE	DWN	CHK	APP	O.A.	NO.	DIA.	LGT	TYPE	WASHER
	MATERIAL:										
	M270 GR 50W										
	ELECTRODES:										
	HOLES:										
	SHOP BOLTS:										
	15/16 Ø (UN)										
	7/8 Ø (UN)										

**SURFACE PREP. & PAINT:**  
-STEEL WITHIN 10'-0 OF ABUT 2 SHALL BE PAINTED (SEE GN501)  
-ALL OTHER STEEL SHALL BE BLAST CLEANED AND LEFT UNPAINTED.

<b>DESCRIPTION:</b>	GIRDER - G4B	<b>DRAWN BY</b>		<b>DATE</b>	
<b>JOB:</b>	BRIDGE NO. 50N I-89 NB OVER U.S. ROUTE 2 I-89 IMPROVEMENTS TOWN OF MIDDLESEX-BOLTON, VERMONT	<b>CHKD BY</b>	BW	<b>DATE</b>	09/25
<b>PROJ NO.</b>	IM-089-2(26)	<b>APPROV BY</b>	DO	<b>DATE</b>	09/28
<b>CUSTOMER:</b>	VERMONT AGENCY OF TRANSPORTATION	<b>SUPERVISOR</b>	H. J. GATTI	<b>Q.A.</b>	

<b>CASCO BAY STEEL STRUCTURES, INC.</b>	<b>JOB NO.</b>	<b>DRG. NO.</b>
75 SPRING HILL ROAD PHONE (207) 282-7360	SACO, MAINE 04072 123-50N	609
	<b>FAX.</b> (207) 282-1179	<b>REV.</b> △