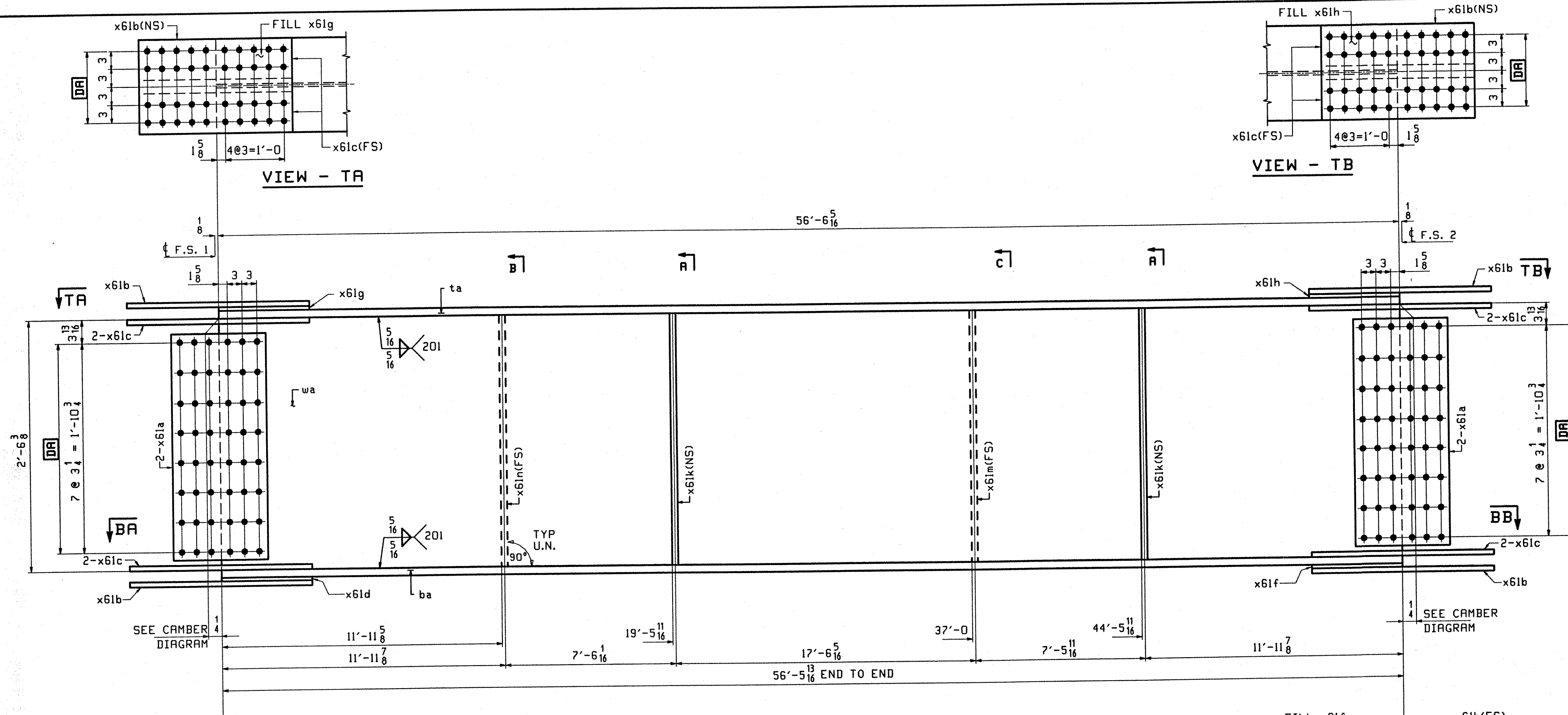
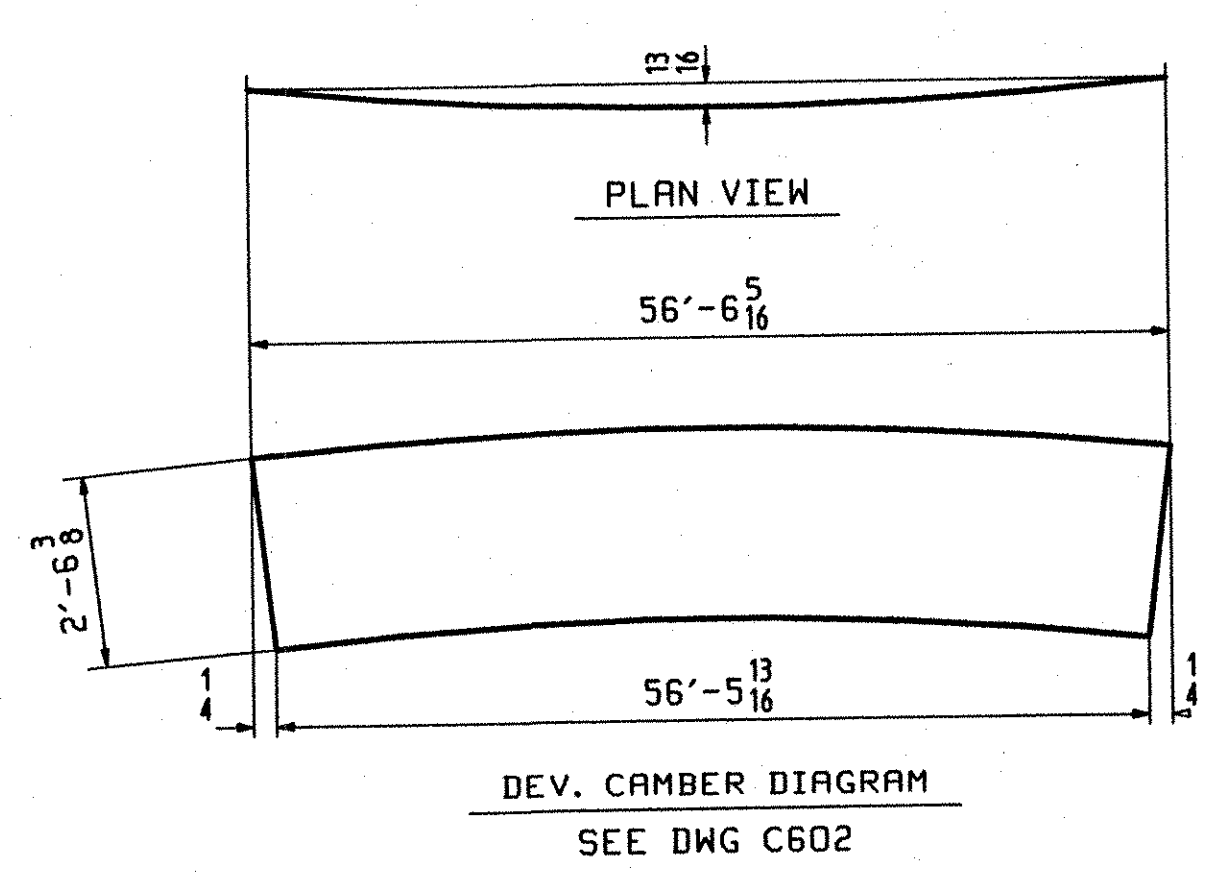
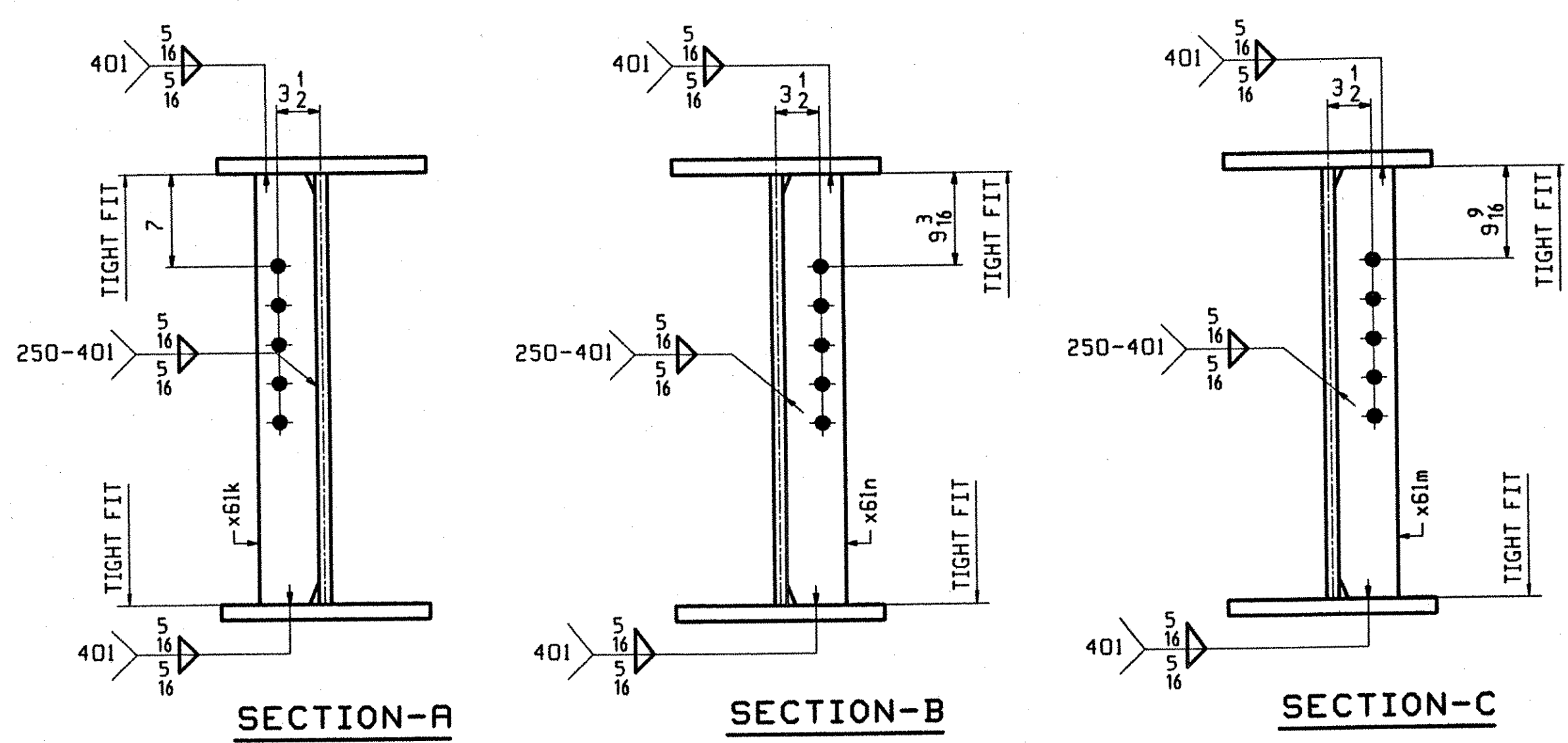
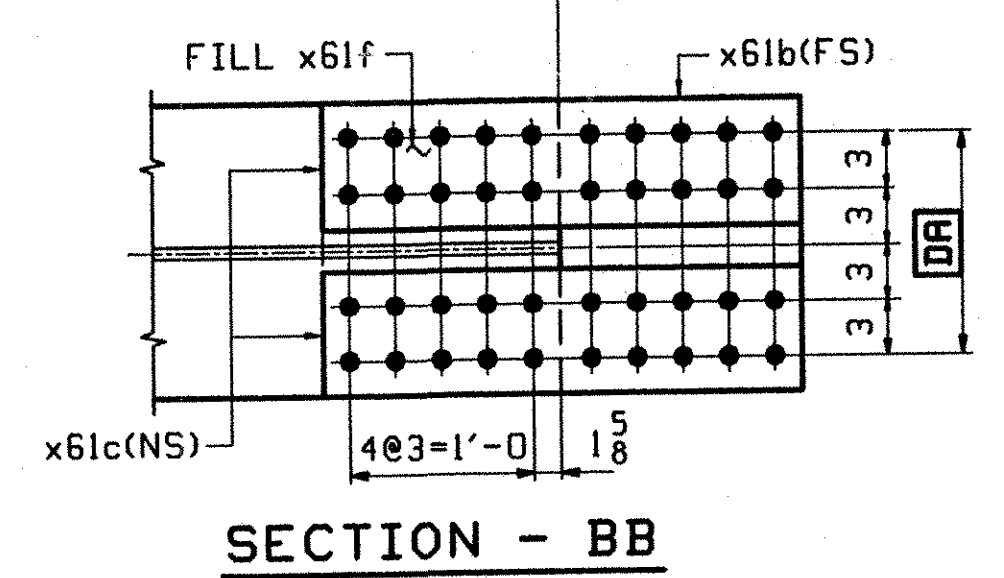
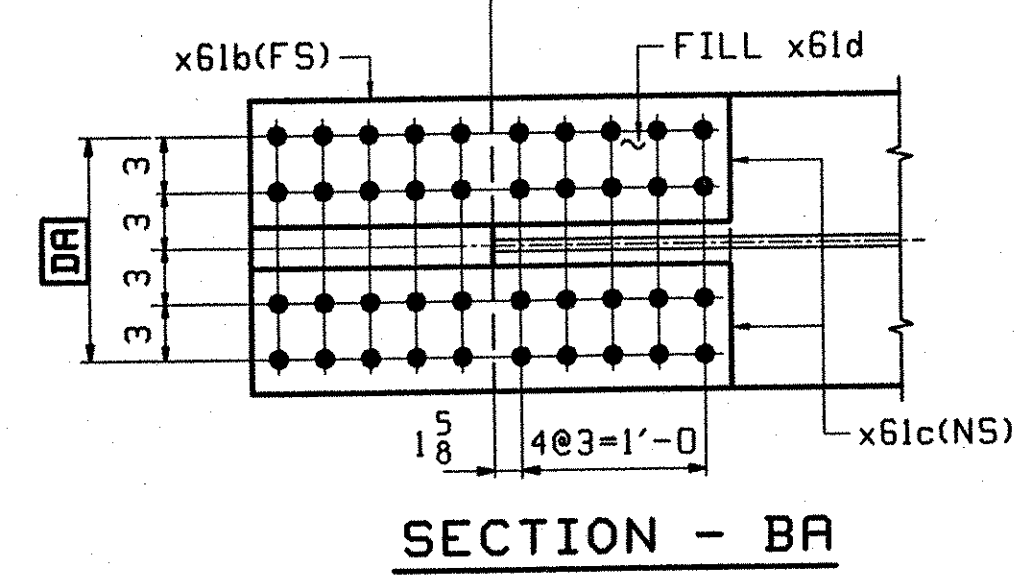


PAGE	LINE	MARK	QTY	MARK	MATERIAL	LENGTH		REMARKS	JOB NO.	DRAWING NO.	REV.
						FT	INCHES				
		G3B	1		GIRDER					10000	
602	A		1	wa	PL 1/2 x 32 1/4	56	5/16	(M270-50W)2			
601	N		1	ta	PL 7/8 x 16	56	5/16	(M270-50W)2			
601	G		1	ba	PL 1 x 16	56	5/16	(M270-50W)2			
603	B		4	x61a	PL 1/2 x 26 1/4	1	7	(M270-50W)2			
603	C		4	x61b	PL 5/8 x 16	2	7	(M270-50W)2			
603	D		8	x61c	PL 3/4 x 7	2	7	(M270-50W)2			
603	H		1	x61d	PL 1/4 x 16	1	3 3/8	(M270-50W) FILL			
603	J		1	x61f	PL 1/4 x 16	1	3 3/8	(M270-50W) FILL			
603	F		1	x61g	PL 3/8 x 16	1	3 3/8	(M270-50W) FILL			
603	G		1	x61h	PL 1/4 x 16	1	3 3/8	(M270-50W) FILL			
603	N		1	x61n	PL 1/2 x 5	2	6 3/8	(M270-50W)			
603	N		2	x61k	PL 1/2 x 5	2	6 3/8	(M270-50W)			
603	N		1	x61m	PL 1/2 x 5	2	6 3/8	(M270-50W)			



ONE - GIRDER - G3B

1. FOR GIRDER STANDARD DETAILS SEE DRAWING X61.
2. FOR CAMBER AND FLANGE DIAGRAMS SEE DRAWING C602.
3. FOR HORIZONTAL CURVING DIAGRAM SEE DRAWING HC601.
4. FOR GENERAL NOTES SEE DRAWING GN501.



TVGA
Engineering, Surveying, P.C.

NO EXCEPTIONS TAKEN REJECTED
 FURNISH AS CORRECTED
 REVISE AND RESUBMIT

ENGINEER has reviewed Shop Drawings and Samples and other data which Contractor is required to submit, only for conformance with the information given in the Contract Documents and conformity with the design intent of the completed Project as a functioning whole as indicated in the Contract Documents. Such review shall extend to means, methods, techniques, sequences or procedures of construction or to safety precautions and programs incident thereto. Contractor is responsible for dimensions to be confirmed and corrected at the job site for information that pertains solely to the fabrication processes or to techniques of construction; and for coordination of the work of all trades.

BY: ALP
DATE: 07-16-2003

OUT FOR APPROVAL	07-16-01										
OUT FOR APPROVAL											
ISSUED TO SHOP											
FIELD & OFFICE											
REV.	REMARKS	DATE	DWN	CHK	APP	Q.A.	NO.	DIA.	LGT	TYPE	WASHER
	MATERIAL:	ELECTRODES:		HOLES:				SHOP BOLTS:			
	M270 GR 50W			15/16 φ (UN)				7/8 φ (UN)			
SURFACE PREP. & PAINT:											
-STEEL WITHIN 10'-0" OF ABUT 2 SHALL BE PAINTED (SEE GN501)											
-ALL OTHER STEEL SHALL BE BLAST CLEANED AND LEFT UNPAINTED.											
DESCRIPTION: GIRDER - G3B										DRAWN BY	DATE
JOB: BRIDGE NO. 50N										BW	09/25
I-89 NB OVER U.S. ROUTE 2										CHKD BY	
I-89 IMPROVEMENTS										DO	09/28
TOWN OF MIDDLESEX-BOLTON, VERMONT										APPROV BY	
TENSOR 2108-N										SUPERVISOR	H. J. GATTI
PROJ NO. IM-089-2(26)										Q.A.	
CUSTOMER: VERMONT AGENCY OF TRANSPORTATION											
CASCO BAY STEEL STRUCTURES, INC.										JOB NO.	DRG. NO.
75 SPRING HILL ROAD SACO, MAINE 04072										123-50N	608
PHONE (207) 282-7360 FAX. (207) 282-1179											REV. ▲