

JOB NO.		DRAWING NO.		REV.			
606		606		606			
ABM INFO	SHIP	BILL OF MATERIAL		REMARKS	WT	PROCUREMENT NOTES	
PAGE	LINE	MARK	QTY	MARK	MATERIAL	LENGTH FT INCHES	
		GIB	1		GIRDER		9989
602	E	1	wa	PL	$\frac{1}{2} \times 32 \frac{1}{4}$	56 9 $\frac{1}{4}$	(M270-50HT2) (H2-3)
601	L	1	ta	PL	$\frac{3}{8} \times 16$	56 9 $\frac{1}{4}$	(M270-50HT2) (H2-3)
601	E	1	ba	PL	1x16	56 8 $\frac{1}{4}$	(M270-50HT2) (H2-3)
603	B	4	x61a	PL	$\frac{1}{2} \times 26 \frac{1}{4}$	1 7	(M270-50HT2) (H2-3)
603	C	4	x61b	PL	$\frac{5}{8} \times 16$	2 7	(M270-50HT2) (H2-3)
603	D	8	x61c	PL	$\frac{3}{8} \times 7$	2 7	(M270-50HT2) (H2-3)
603	H	1	x61d	PL	$\frac{1}{2} \times 16$	1 3 $\frac{3}{8}$	(M270-50W) FILL
603	J	1	x61f	PL	$\frac{1}{4} \times 16$	1 3 $\frac{3}{8}$	(M270-50W) FILL
603	F	1	x61g	PL	$\frac{3}{8} \times 16$	1 3 $\frac{3}{8}$	(M270-50W) FILL
603	G	1	x61h	PL	$\frac{1}{4} \times 16$	1 3 $\frac{3}{8}$	(M270-50W) FILL
603	N	2	x61k	PL	$\frac{1}{2} \times 5$	2 6 $\frac{3}{8}$	(M270-50W)

TVGA
Engineering, Surveying, P.C.

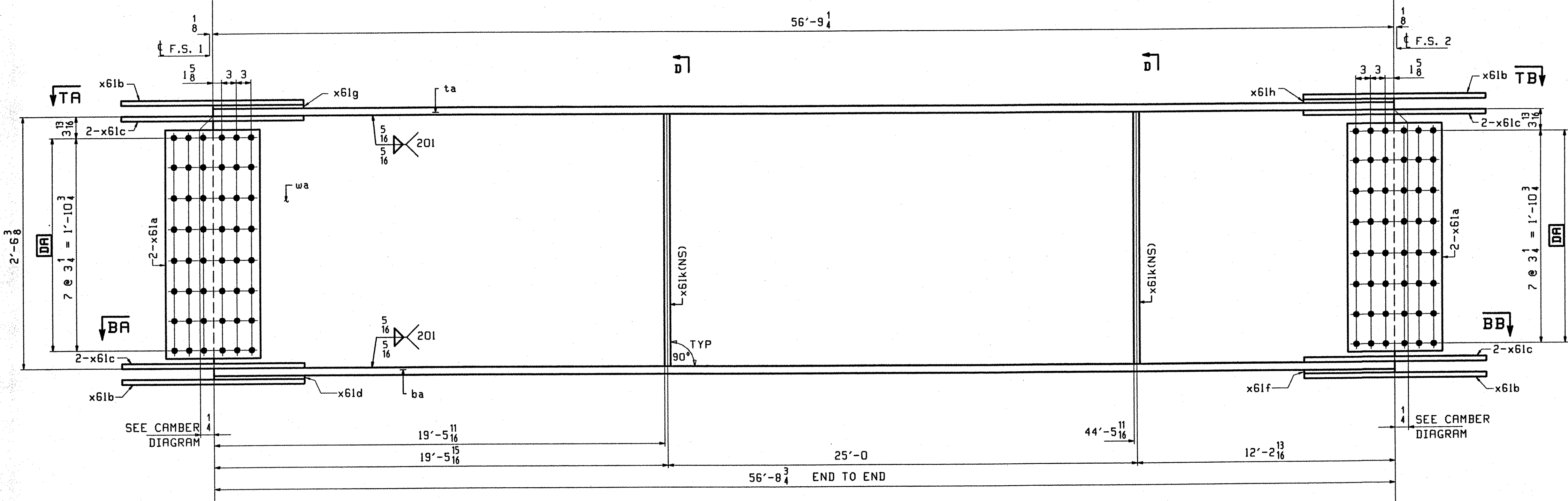
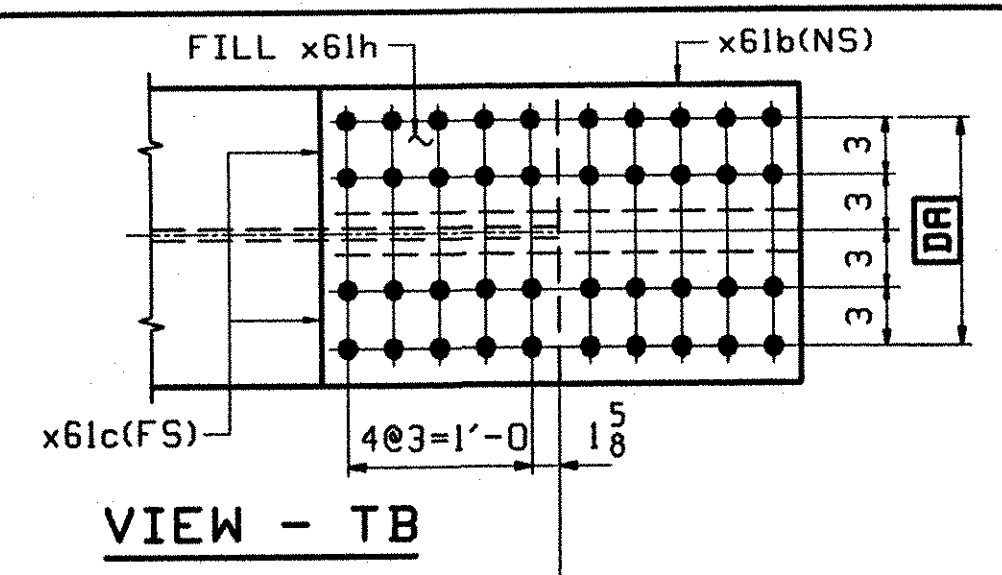
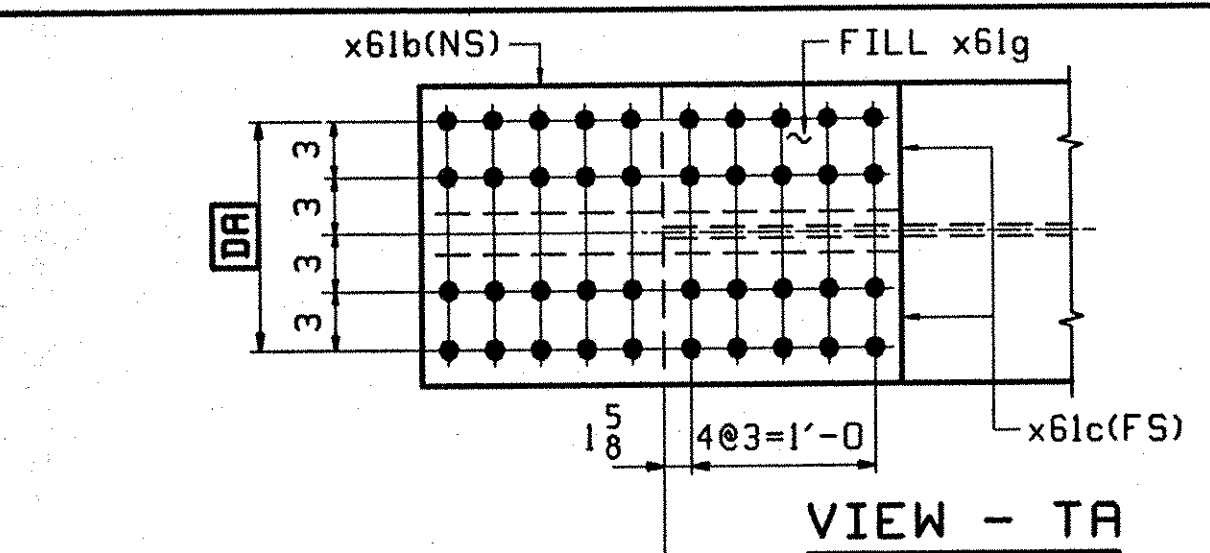
NO EXCEPTIONS TAKEN REJECTED
 FURNISH AS CORRECTED
 REVISE AND RESUBMIT

ENGINEER has reviewed Shop Drawings and Samples and other data which Contractor is required to submit, only for conformance with the information given in the Contract Documents and compatibility with the design concept of the completed Project as a functioning whole as indicated in the Contract Documents. Such review shall extend to means, methods, techniques, equipment or procedures of construction or to safety precautions and programs incident thereto. Contractor is responsible for dimensions to be confirmed and certified as the job site for information that pertains solely to the fabrication processes or to techniques of construction, and for coordination of the work of all trades.

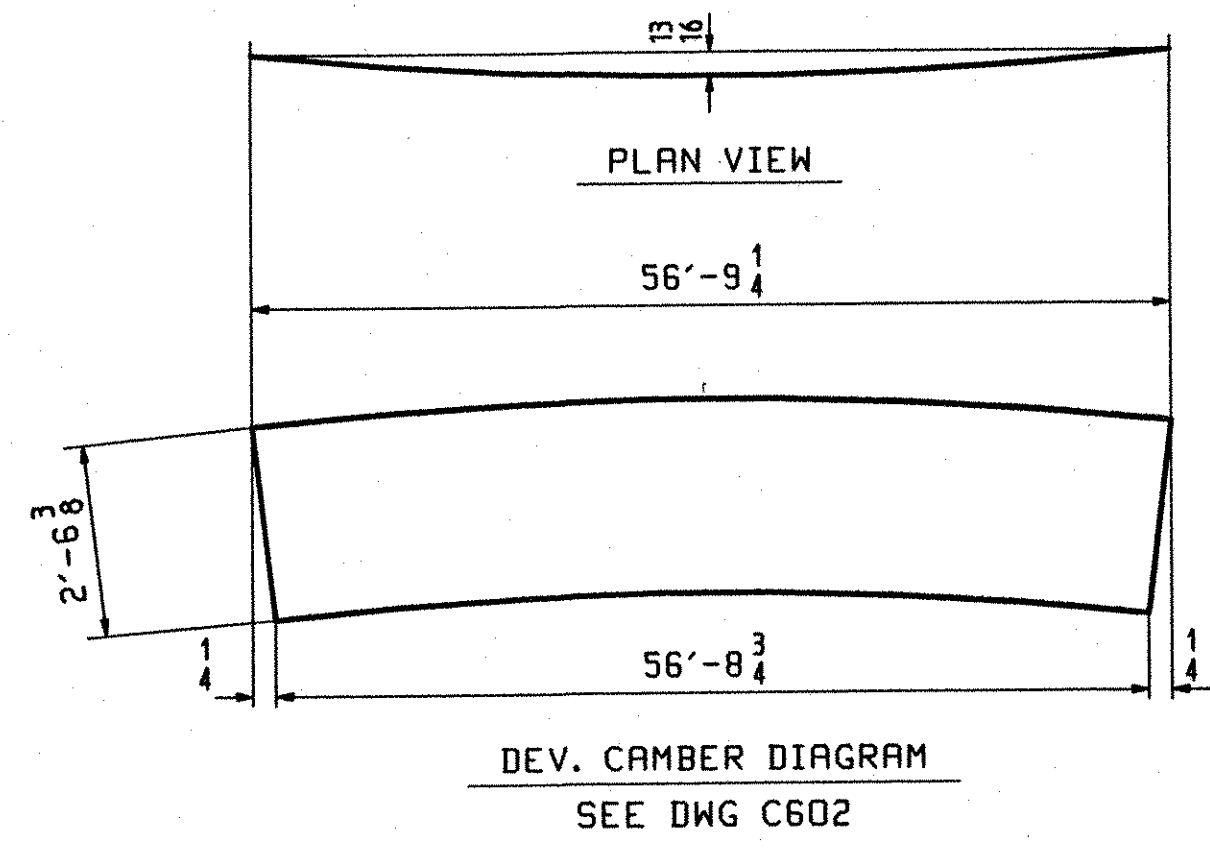
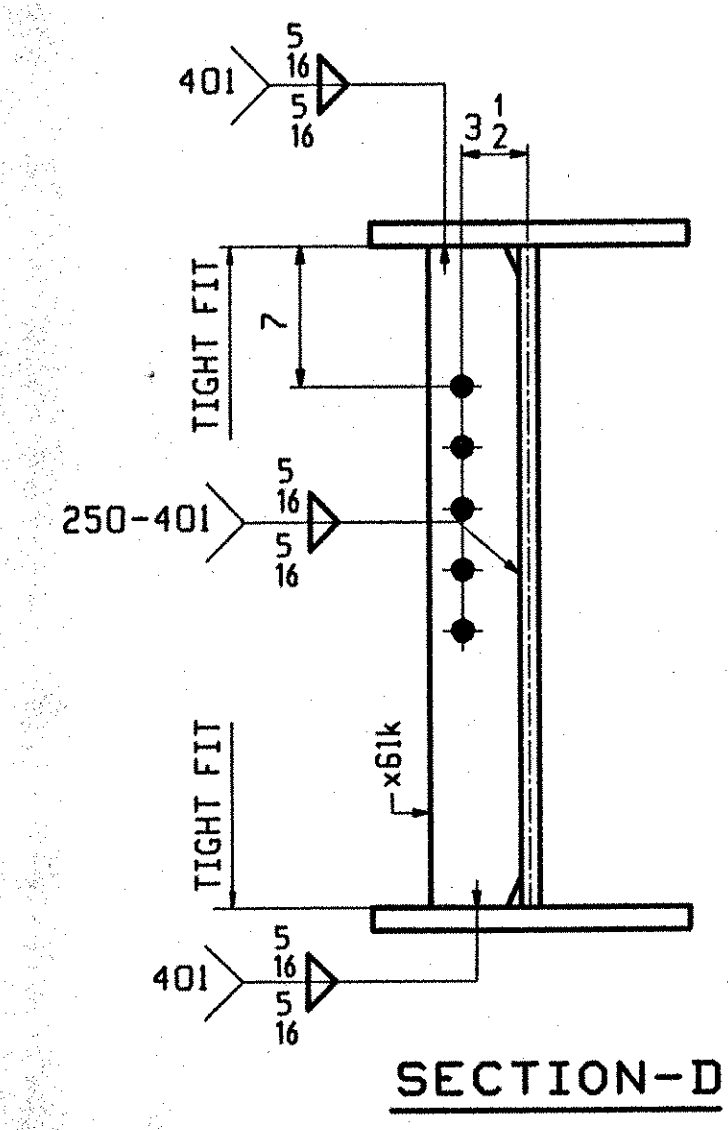
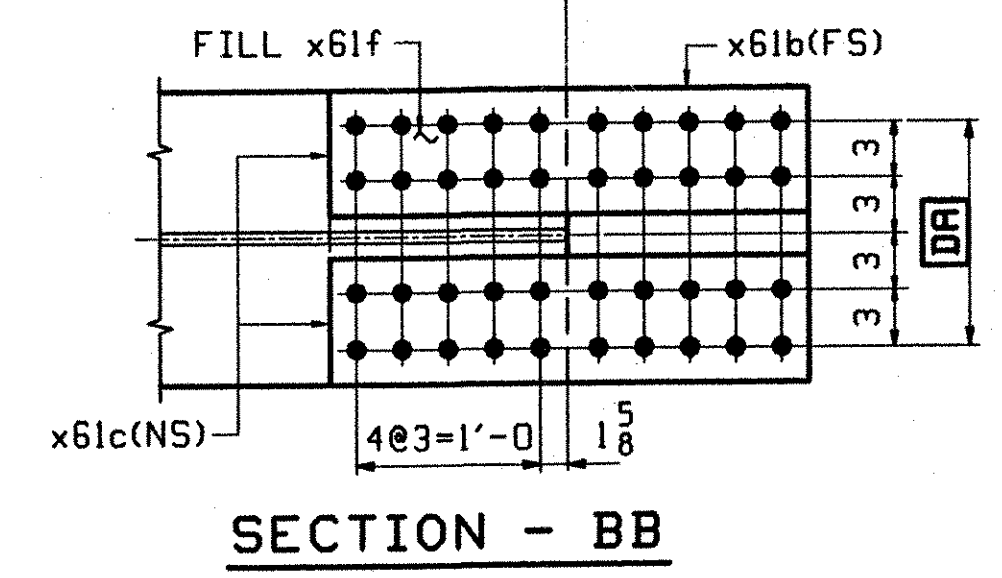
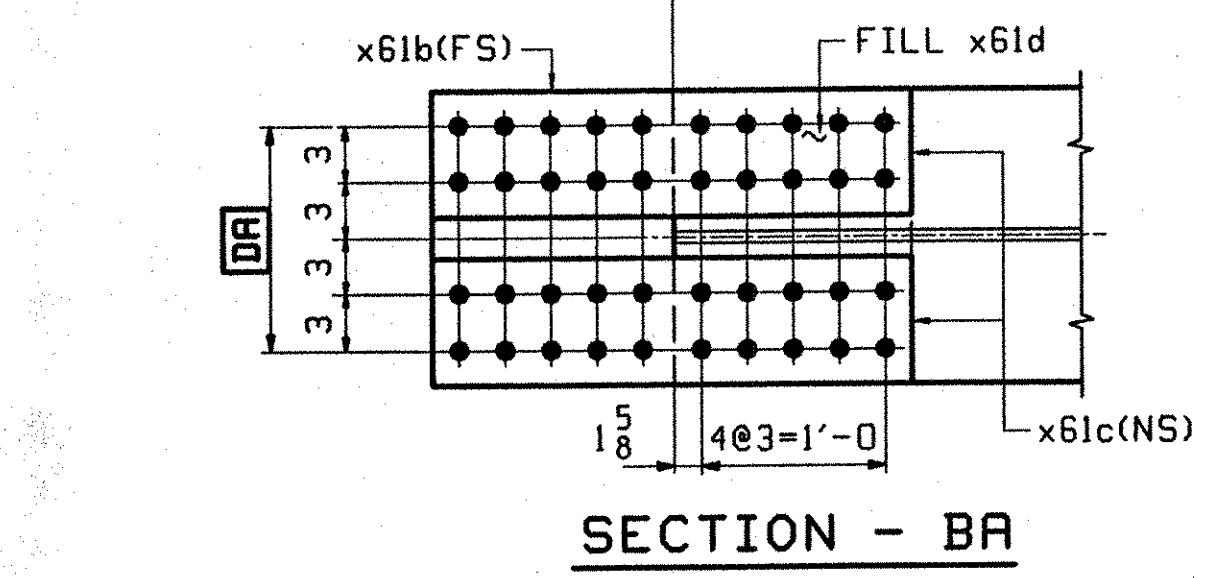
BY: ADD
DATE: 07-16-2002

OUT FOR APPROVAL	10-9-01								
OUT FOR APPROVAL									
ISSUED TO SHOP									
FIELD & OFFICE									

REV.	REMARKS	DATE	DWN	CHK	APP	Q.A.	NO.	DIA.	LGT	TYPE	WASHER
	MATERIAL:										
	M270 GR 50W										
	ELECTRODES:										
	HOLES:										
	15/16 ϕ (UN)										
	SHOP BOLTS:										
	7/8 ϕ (UN)										
SURFACE PREP. & PAINT:											
-STEEL WITHIN 10'-0" OF ABUT 2 SHALL BE PAINTED (SEE GN501)											
-ALL OTHER STEEL SHALL BE BLAST CLEANED AND LEFT UNPAINTED.											
DESCRIPTION: GIRDER - GIB										DRAWN BY	DATE
JOB: BRIDGE NO. 50N										BW	09/25
I-89 NB OVER U.S. ROUTE 2										CHKD BY	
I-89 IMPROVEMENTS										DO	09/28
TOWN OF MIDDLESEX-BOLTON, VERMONT										APPROV BY	
TENSOR 2108-N										SUPERVISOR	H. J. GATTI
PROJ NO. IM-089-2(26)										Q.A.	
CUSTOMER: VERMONT AGENCY OF TRANSPORTATION											
CASCO BAY STEEL STRUCTURES, INC.										JOB NO.	DRG. NO.
75 SPRING HILL ROAD SARCO, MAINE 04072										123-50N	606
PHONE (207) 282-7360 FAX. (207) 282-1179										REV.	Δ



- ONE - GIRDER - GIB**
1. FOR GIRDER STANDARD DETAILS SEE DRAWING X61.
 2. FOR CAMBER AND FLANGE DIAGRAMS SEE DRAWING C602.
 3. FOR HORIZONTAL CURVING DIAGRAM SEE DRAWING HC601.
 3. FOR GENERAL NOTES SEE DRAWING GN501.



The Out 4 Inside EST 001 / www.johnco.com / Rev 1 / Rev 0
 BR