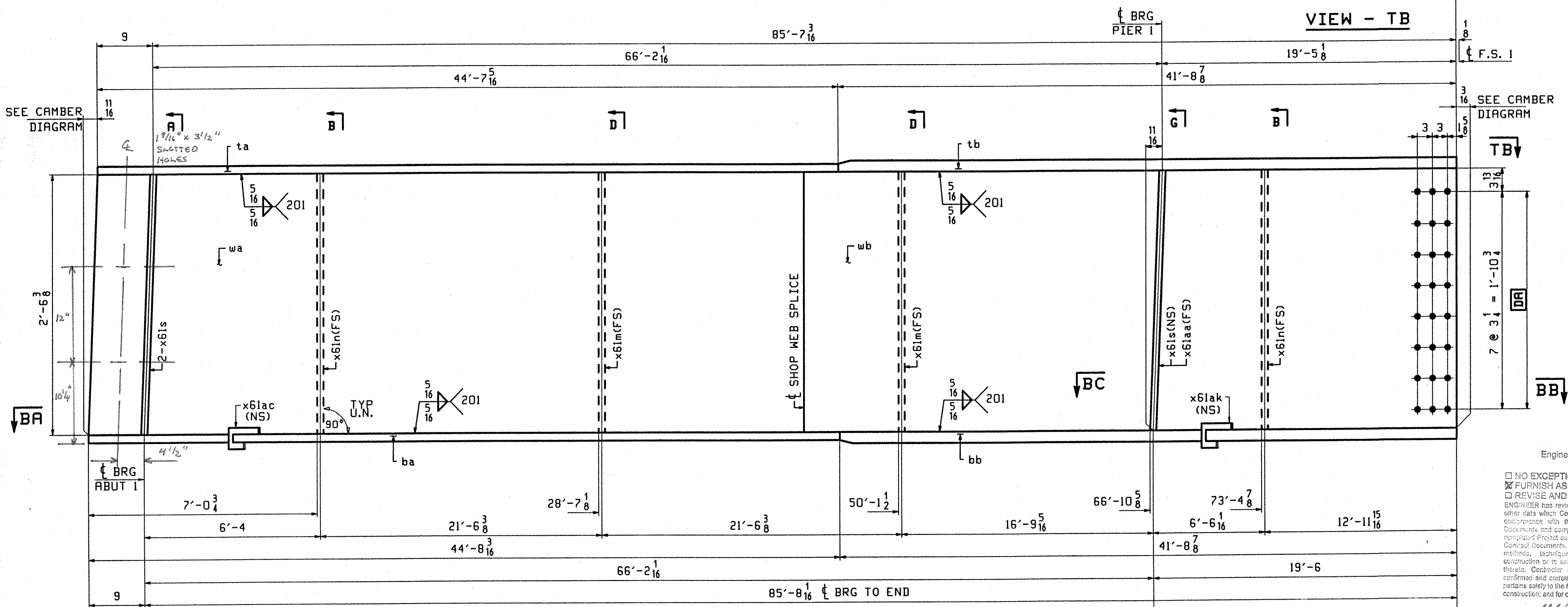


ABM INFO		SHIP				BILL OF MATERIAL		JOB NO.	DRAWING NO.	REV.
PAGE	LINE	MARK	QTY	MARK	MATERIAL	LENGTH FT	INCHES	REMARKS	WT	PROCUREMENT NOTES
		GSA	1		GIRDER				14864	
602	Q		1	wa	PL 1/2 x 3/8	42	9 3/8	(M270-50WT2)		
602	U		1	wb	PL 1/2 x 3/4	43	7 7/8	(M270-50WT2)		
601	Y		1	ta	PL 1/4 x 16	44	7 1/8	(M270-50WT2)		
601	C		1	tb	PL 1/4 x 16	41	8 7/8	(M270-50WT2)		
601	Y		1	ba	PL 1/4 x 16	44	8 1/8	(M270-50WT2)		
601	C		1	bb	PL 1/4 x 16	41	8 7/8	(M270-50WT2)		
603	M		3	x6ls	PL 7/8 x 7/4	2	6 3/8	(M270-50W)		
603	N		2	x6ln	PL 1/2 x 5	2	6 3/8	(M270-50W)		
603	N		2	x6lm	PL 1/2 x 5	2	6 3/8	(M270-50W)		
603	H		1	x6laa	PL 7/8 x 7/4	2	6 3/8	(M270-50W)		
603	P		1	x6lac	PL 1/2 x 2 1/2	0	10 1/8	(M270-50W)		
603	P		1	x6lak	PL 1/2 x 3/4	0	10 1/8	(M270-50W)		

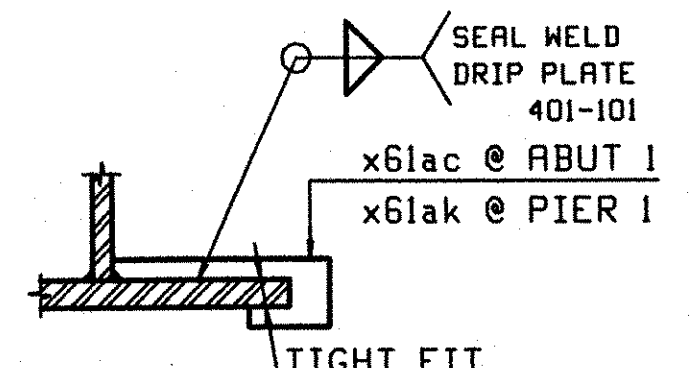


TVGA  
Engineering, Surveying, P.C.

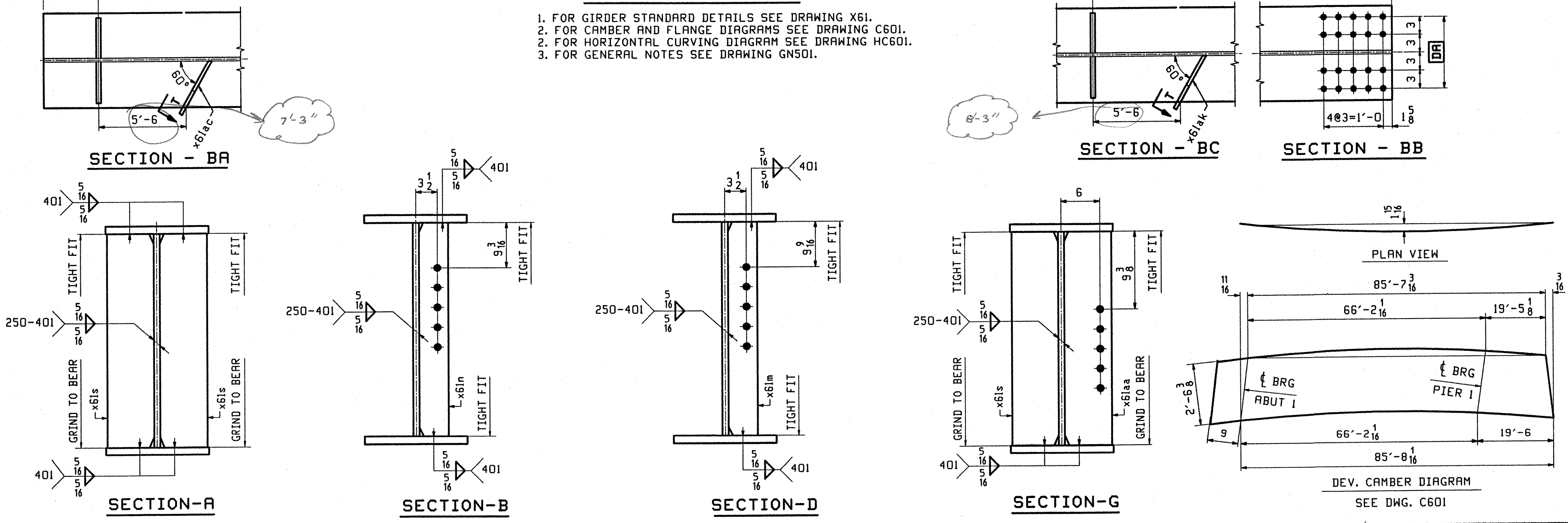
NO EXCEPTIONS TAKEN  REJECTED  
 FURNISH AS CORRECTED  
 REVISE AND RESUBMIT

ENGINEER has reviewed Shop Drawings and Samples and other data which Contractor is required to submit, for conformance with the information given in the Contract Documents and compliance with the whole range of the Contract Documents. Such review shall extend to means, methods, techniques, sequences or procedures of construction or to safety precautions and programs incident thereto. Contractor is responsible for dimensions to be confirmed and corrected as the job work in accordance that pertains solely to the fabrication process or to the progress of construction; and for coordination of the work of all trades.

BY: *[Signature]*  
DATE: 07-16-2002



- ONE - GIRDER - G5A**
1. FOR GIRDER STANDARD DETAILS SEE DRAWING X61.
  2. FOR CAMBER AND FLANGE DIAGRAMS SEE DRAWING C601.
  3. FOR HORIZONTAL CURVING DIAGRAM SEE DRAWING HC601.
  3. FOR GENERAL NOTES SEE DRAWING GN501.



OUT FOR APPROVAL	10-9-01										
ISSUED TO SHOP											
FIELD & OFFICE											
REV.	REMARKS	DATE	DWN	CHK	APP	Q.A.	NO.	DIA.	LG T	TYPE	WASHER
	MATERIAL: M270 GR 50W										SHOP BOLTS: 7/8 Ø (UN)
	SURFACE PREP. & PAINT: -STEEL WITHIN 10'-0 OF ABUT 2 SHALL BE PAINTED (SEE GN501) -ALL OTHER STEEL SHALL BE BLAST CLEANED AND LEFT UNPAINTED.										
	DESCRIPTION: GIRDER - G5A										
	JOB: BRIDGE NO. 50N I-89 NB OVER U.S. ROUTE 2 I-89 IMPROVEMENTS TOWN OF MIDDLESEX-BOLTON, VERMONT										
	PROJ NO. 1M-089-2(26)										
	CUSTOMER: VERMONT AGENCY OF TRANSPORTATION										
	<b>CASCO BAY STEEL STRUCTURES, INC.</b>										
	75 SPRING HILL ROAD PHONE (207) 282-7360										
	SACO, MAINE 04072 FAX. (207) 282-1179										
	JOB NO. 123-50N										
	DRG. NO. 605										
	REV. <input type="checkbox"/>										

7th Ed. 4-10-2008 COT 2001 / www.casco.com