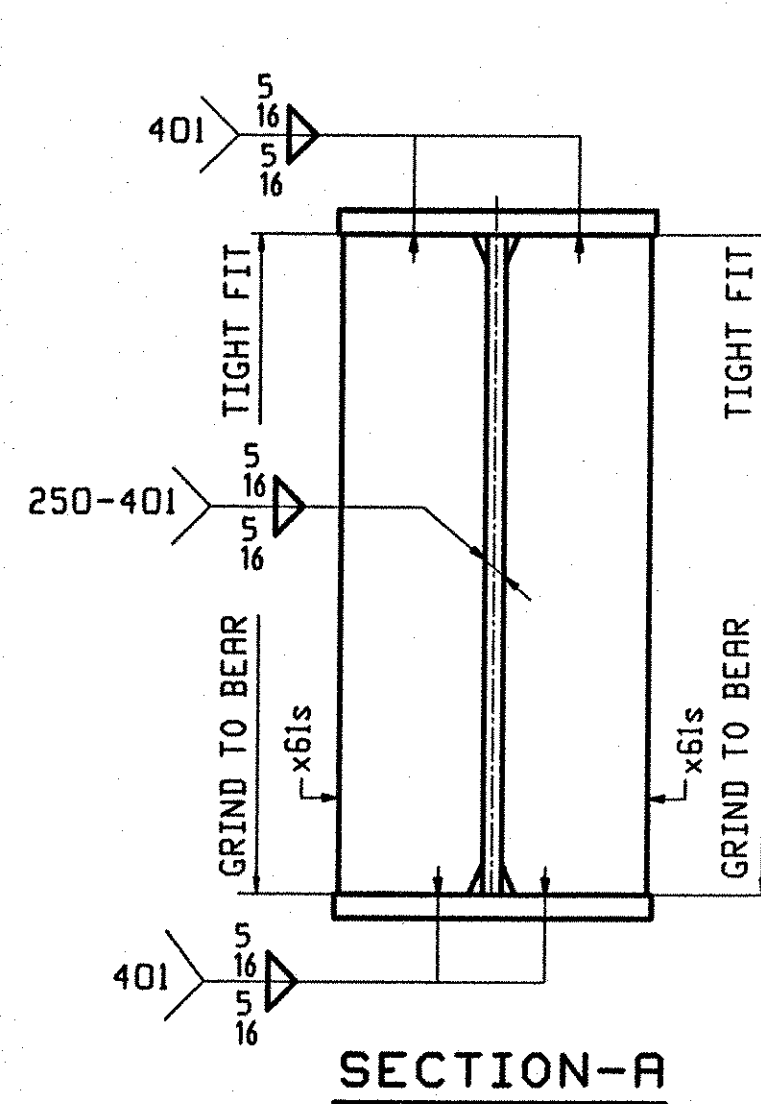
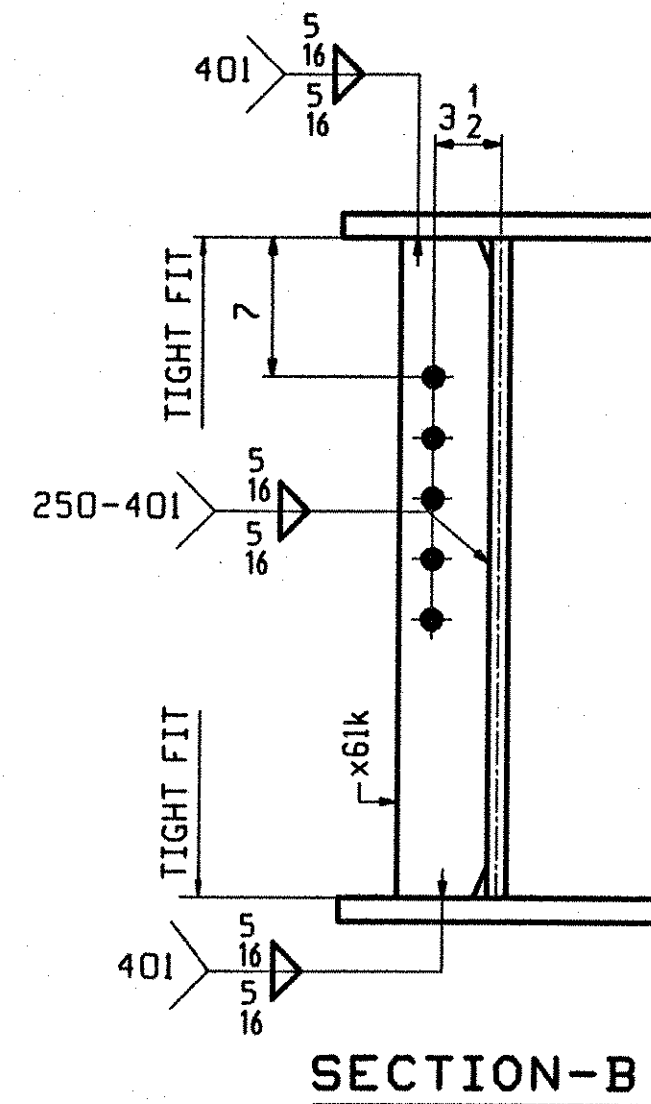


ONE - GIRDER - G2A

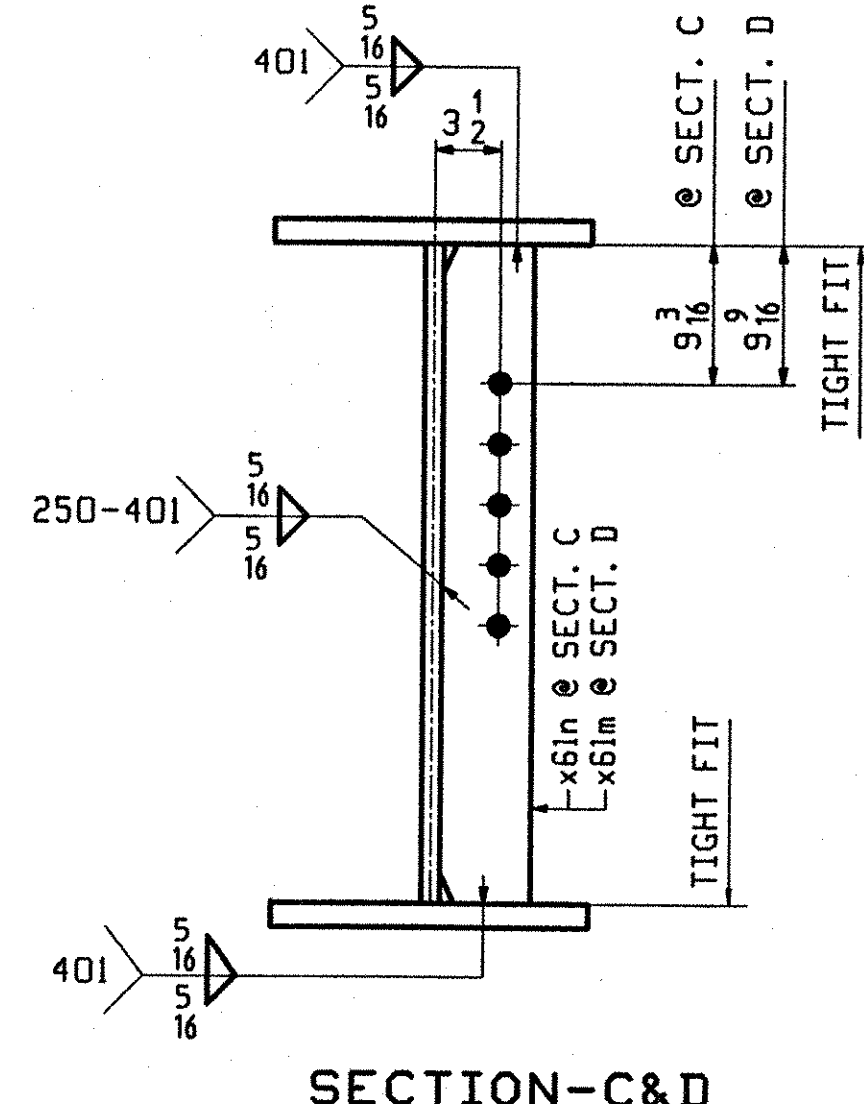
1. FOR GIRDER STANDARD DETAILS SEE DRAWING X61.
2. FOR CAMBER AND FLANGE DIAGRAMS SEE DRAWING C601.
3. FOR HORIZONTAL CURVING DIAGRAM SEE DRAWING HC601.
4. FOR GENERAL NOTES SEE DRAWING GN501.



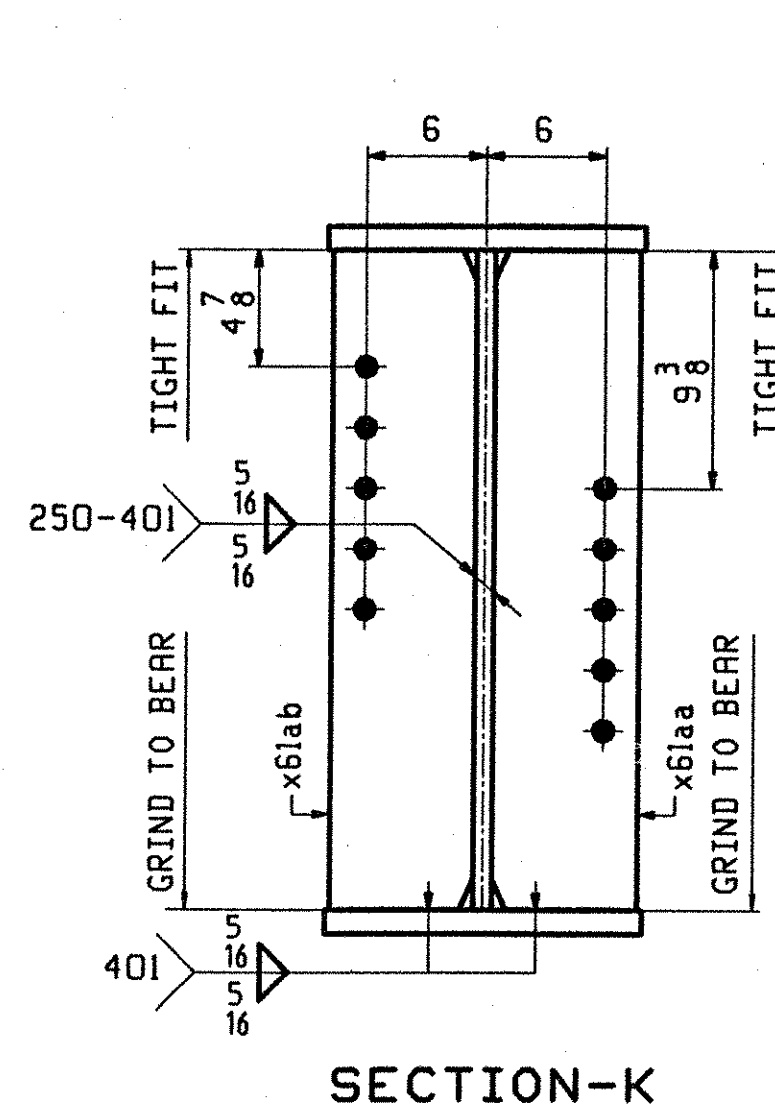
SECTION-A



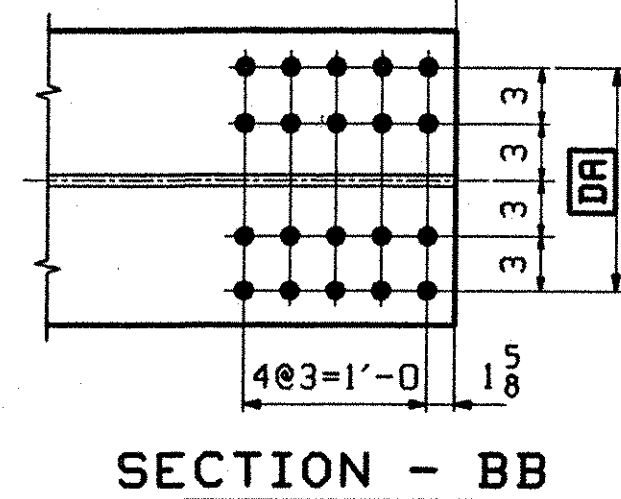
SECTION-B



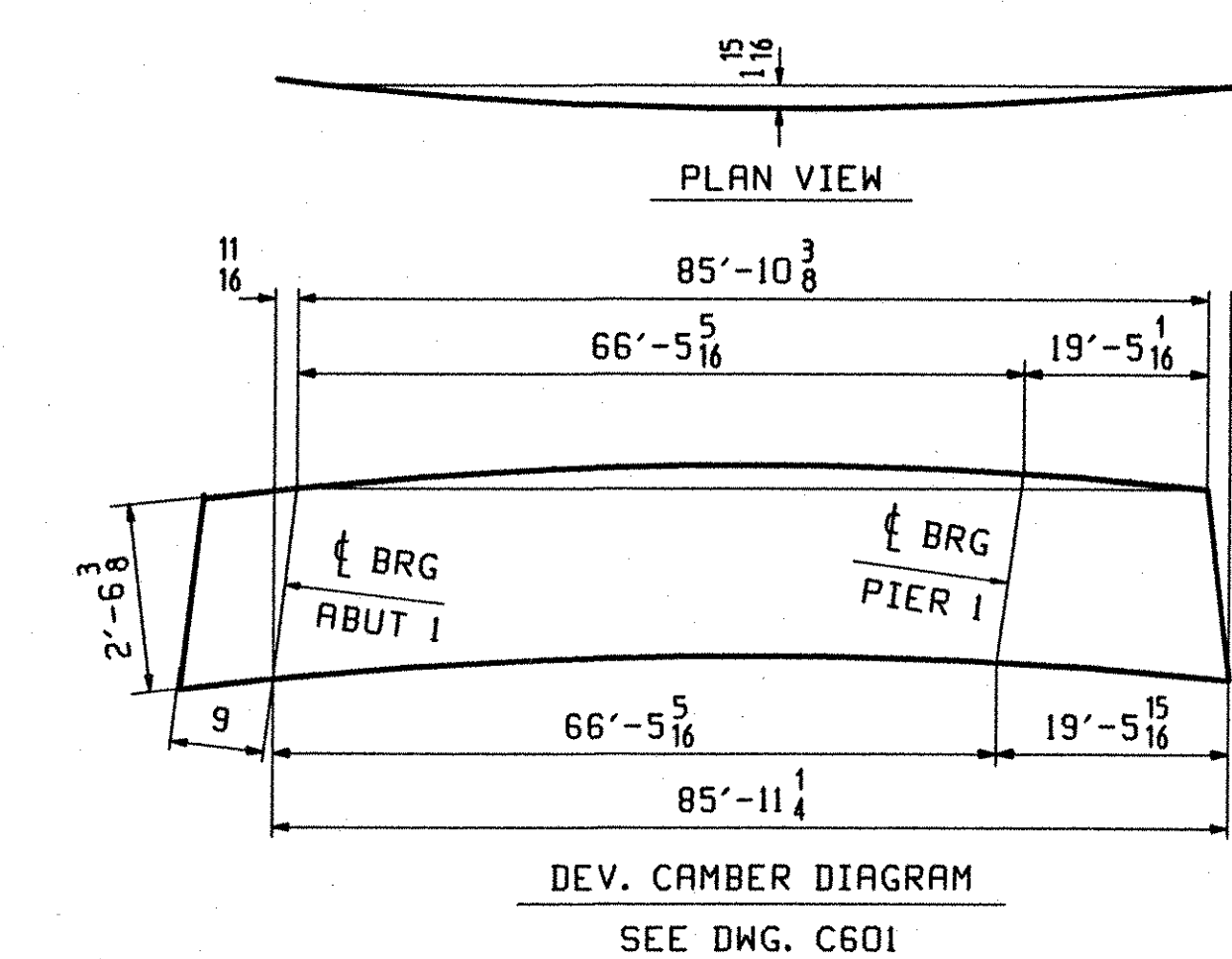
SECTION-C&D



SECTION-K



SECTION - BB



DEV. CAMBER DIAGRAM
SEE DWG. C601

ABM INFO		SHIP	BILL OF MATERIAL				JOB NO.	DRAWING NO.	REV.
PAGE	LINE	MARK	QTY	MARK	MATERIAL	LENGTH FT INCHES	REMARKS	HT	PROCUREMENT NOTES
		G2A	1		GIRDER				14984
602	N	1	wa	PL	1/2 x 3 1/8	43 3/8	(M270-50W2)		
602	U	1	wb	PL	1/2 x 3 1/8	43 7/8	(M270-50W2)		
601	H	1	ta	PL	7/8 x 16	44 10/16	(M270-50W2)		
601	C	1	tb	PL	1/4 x 16	41 8/8	(M270-50W2)		
601	H	1	ba	PL	7/8 x 16	44 11/8	(M270-50W2)		
601	C	1	bb	PL	1/4 x 16	41 8/8	(M270-50W2)		
603	M	2	x61s	PL	7/8 x 7 3/4	2 6 3/8	(M270-50W)		
603	N	2	x61n	PL	2 x 5	2 6 3/8	(M270-50W)		
603	N	4	x61k	PL	2 x 5	2 6 3/8	(M270-50W)		
603	N	2	x61m	PL	2 x 5	2 6 3/8	(M270-50W)		
603	M	1	x61ab	PL	8 x 7 3/4	2 6 3/8	(M270-50W)		
603	M	1	x61aa	PL	8 x 7 3/4	2 6 3/8	(M270-50W)		

TVGA
Engineering, Surveying, P.C.

NO EXCEPTIONS TAKEN REJECTED
 FURNISH AS CORRECTED
 REVISE AND RESUBMIT

CONTRACTOR has reviewed Shop Drawings and Samples and shall file with Contractor is required to submit. All for compliance with the information given in the Contract Documents and compliance with the design portion of the completed project as a condition of the contract. Contractor is responsible for discrepancies to be identified and corrected at the job site. Information that pertains solely to the fabrication processes or to fabrication of construction and for coordination of the work of all trades.

BY: LPAA
DATE: 01-14-2002

OUT FOR APPROVAL	<u>10-9-01</u>										
OUT FOR APPROVAL											
ISSUED TO SHOP											
FIELD & OFFICE											
REV.	REMARKS	DATE	DMN	CHK	APP	Q.A.	NO.	DIA.	LGT	TYPE	WASHER
MATERIAL:	M270 GR 50W	ELECTRODES:		HOLES:	15/16 Ø (UN)	SHOP BOLTS:	7/8 Ø (UN)				
SURFACE PREP. & PRINT:											
-STEEL WITHIN 10'-0" OF ABUT 2 SHALL BE PAINTED (SEE GN501)											
-ALL OTHER STEEL SHALL BE BLAST CLEANED AND LEFT UNPAINTED.											
DESCRIPTION:		GIRDER - G2A				DRAWN BY		DATE			
JOB:		BRIDGE NO. 50N				BW		09/24			
		I-89 NB OVER U.S. ROUTE 2				CHKD BY		DO			
		I-89 IMPROVEMENTS				APPROV BY		M. J. GATTI			
		TOWN OF MIDDLESEX-BOLTON, VERMONT				SUPERVISOR		Q.A.			
PROJ NO.		IM-089-2(26)									
CUSTOMER:		VERMONT AGENCY OF TRANSPORTATION									
		CASCO BAY STEEL STRUCTURES, INC.				JOB NO.		DRG. NO.			
		75 SPRING HILL ROAD				SACO, MAINE 04072		123-50N		602	
		PHONE (207) 282-7360				FAX (207) 282-1179		REV.		△	