

JOB NO.		DRAWING NO.		REV.			
ABR	INFO	SHIP	BILL OF MATERIAL	REMARKS	WT	PROCUREMENT NOTES	
PAGE	LINE	MARK	QTY	MARK	MATERIAL	LENGTH FT INCHES	
		GIR	1		GIRDER		14916
602	N	1	wa	PL	1/2 x 31/8	43 17/8	(M270-50WT2) (H2-3)
602	U	1	wb	PL	7/8 x 31/8	43 7/8	(M270-50WT2) (H2-3)
601	H	1	ta	PL	8 x 16	44 11/8	(M270-50WT2) (H2-3)
601	C	1	tb	PL	1/4 x 16	41 8/8	(M270-50WT2) (H2-3)
601	H	1	ba	PL	7/8 x 16	45 0/8	(M270-50WT2) (H2-3)
601	C	1	bb	PL	1/4 x 16	41 8/8	(M270-50WT2) (H2-3)
603	M	3	x61s	PL	7/8 x 3/4	2 3/8	(M270-50W)
603	N	4	x61k	PL	1/2 x 5	2 6/8	(M270-50W)
603	M	1	x61ab	PL	7/8 x 3/4	2 3/8	(M270-50W)
603	P	1	x61ad	PL	1/2 x 2 1/2	0 10 15/16	(M270-50W)
603	P	1	x61am	PL	1/2 x 3 1/4	0 10 15/16	(M270-50W)

TVGA
Engineering, Surveying, P.C.

NO EXCEPTIONS TAKEN REJECTED
 FURNISH AS CORRECTED
 REVISE AND RESUBMIT

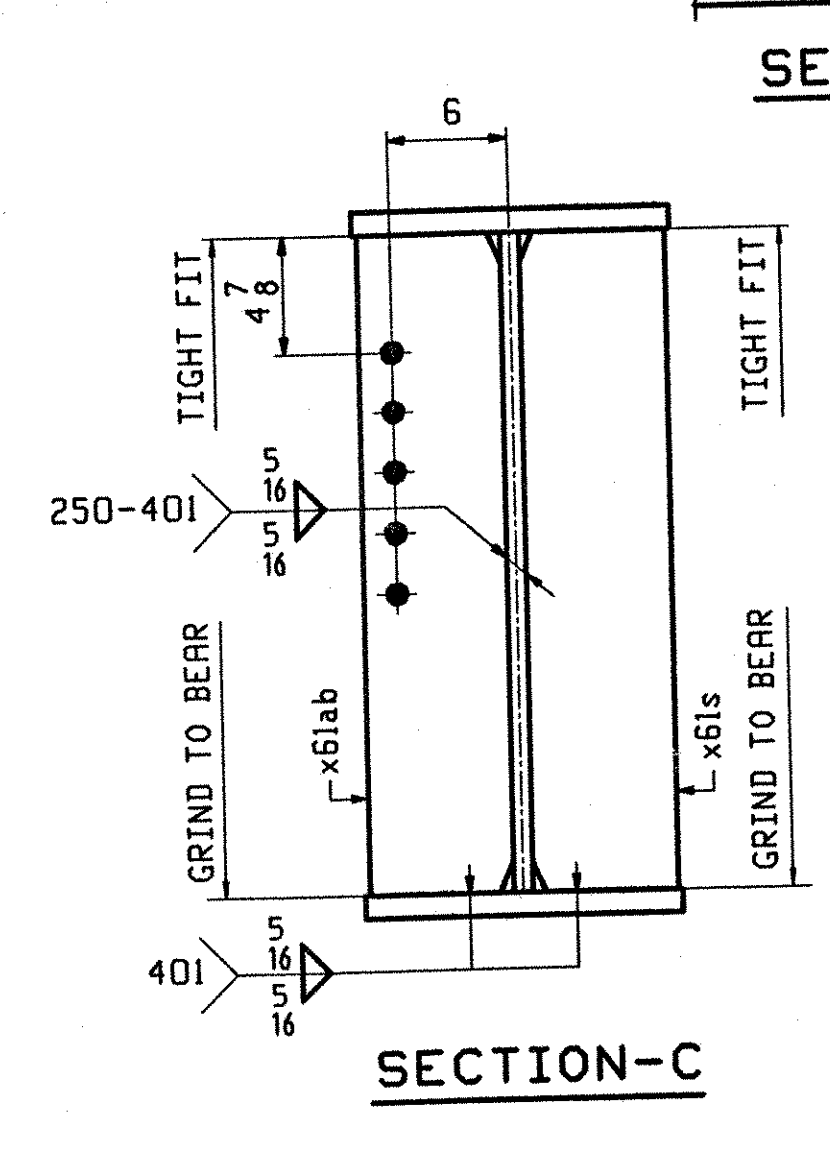
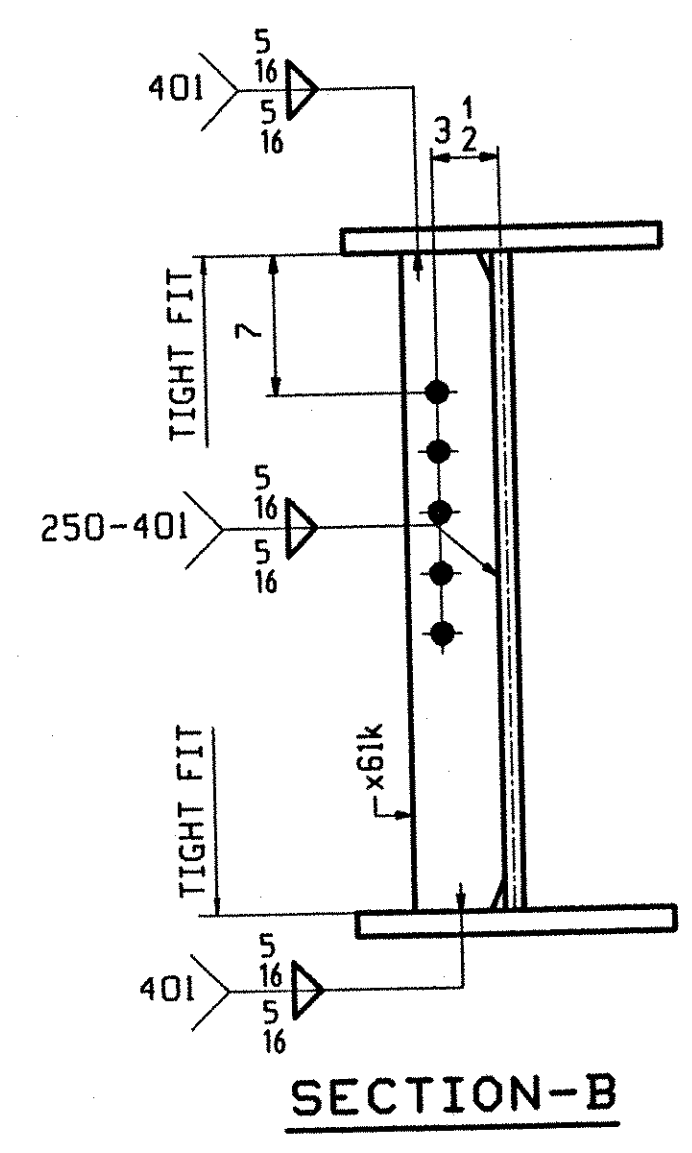
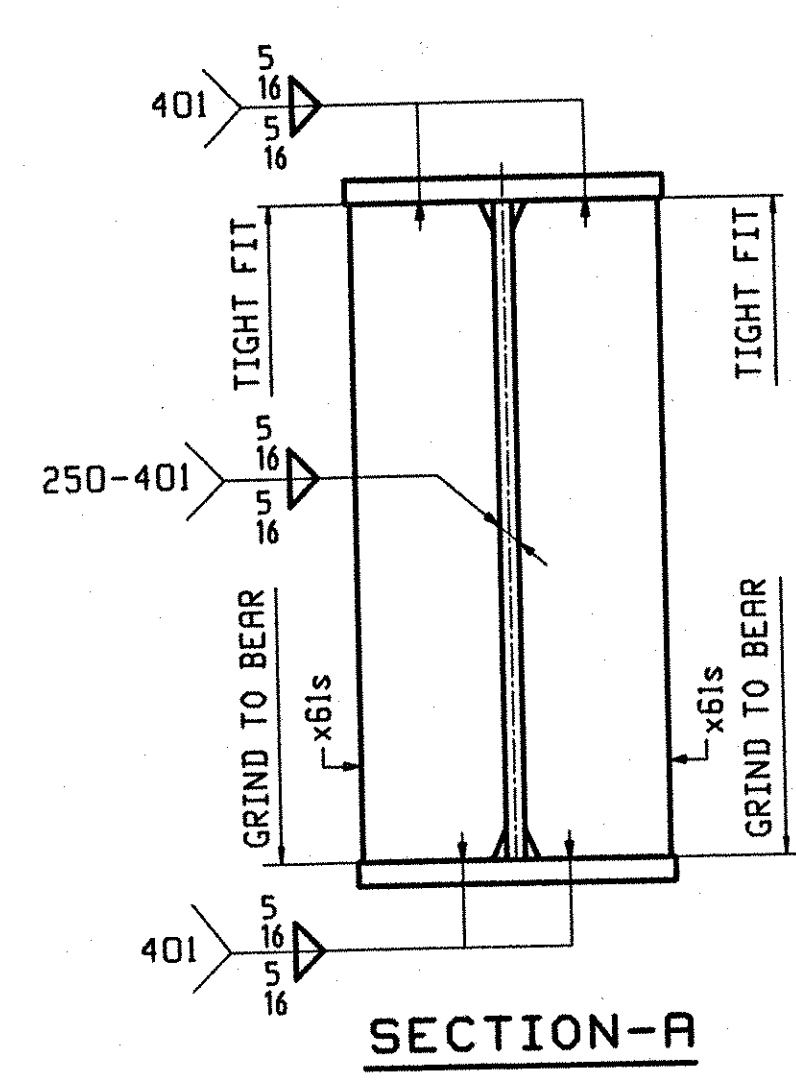
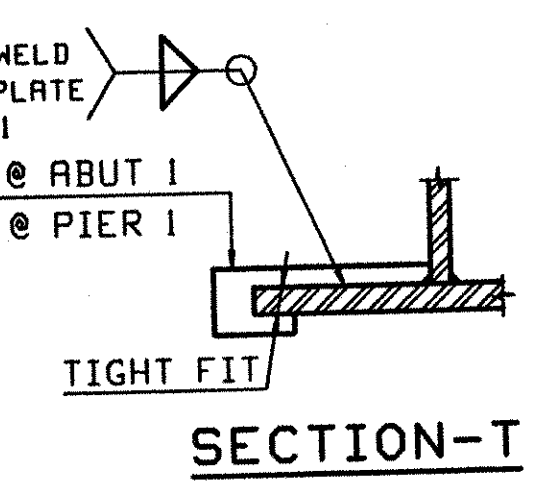
CONTRACTOR has reviewed Shop Drawings and Samples and other data which Contractor is required to submit, only for conformance with the information given in the Contract Documents and compliance with the design concept of the contract project as a bonding vehicle as indicated in the Contract Documents. Such reviews do not extend to means, methods, techniques, equipment or procedures of construction or to safety precautions and programs incident thereto. Contractor is responsible for dimensions to be confirmed and correlated at the job site, for information that pertains solely to the fabrication process or to techniques of construction, and for coordination of the work of all trades.

BY: MLD
DATE: 02-16-2002

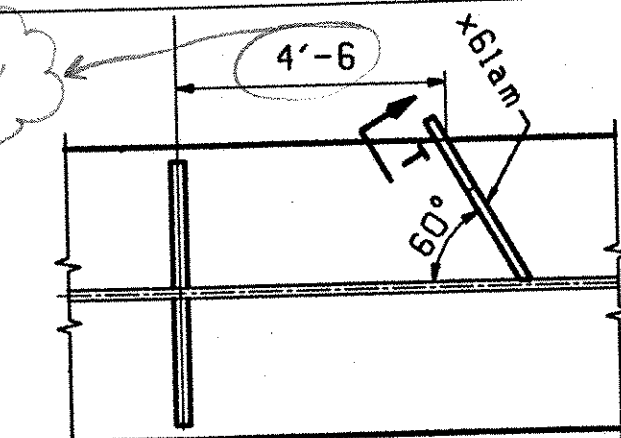
ONE - GIRDER - GIR

1. FOR GIRDER STANDARD DETAILS SEE DRAWING X61.
2. FOR CAMBER AND FLANGE DIAGRAMS SEE DRAWING C601.
3. FOR GENERAL NOTES SEE DRAWING GN501.

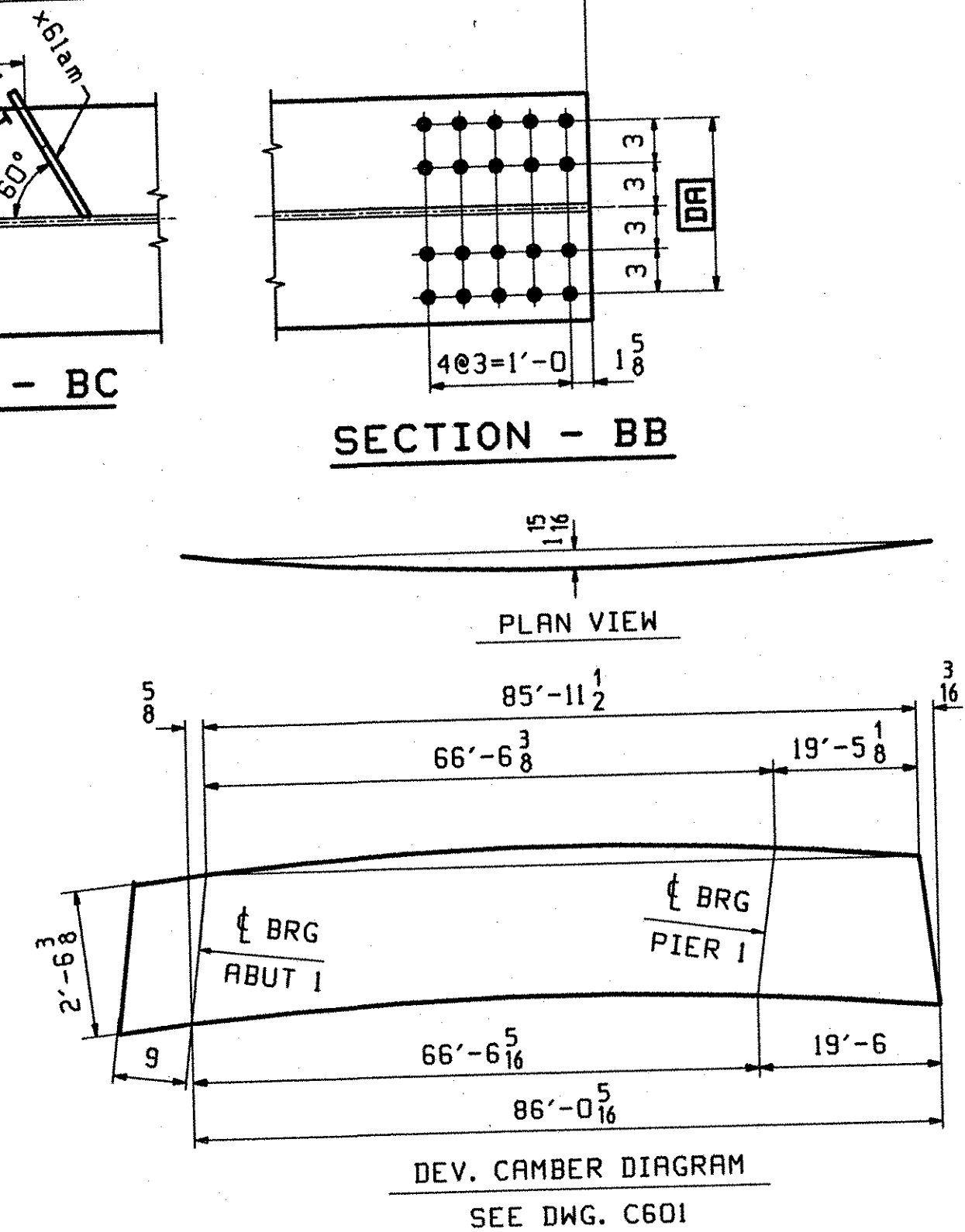
SECTION - BA



SECTION - BC



SECTION - BB



OUT FOR APPROVAL	02-16-02																		
OUT FOR APPROVAL																			
ISSUED TO SHOP																			
FIELD & OFFICE																			
REV.	REMARKS	DATE	DWN	CHK	APP	Q.A.	NO.	DIA.	LGT	TYPE	WASHER								
	MATERIAL:	ELECTRODES:		HOLES:		SHOP BOLTS:													
	M270 GR 50W			15/16 Ø (UN)		7/8 Ø (UN)													
SURFACE PREP. & PAINT:																			
-STEEL WITHIN 10'-0" OF ABUT 2 SHALL BE PAINTED (SEE GN501)																			
-ALL OTHER STEEL SHALL BE BLAST CLEANED AND LEFT UNPAINTED.																			
DESCRIPTION: GIRDER - GIR												DRAWN BY		DATE					
JOB: BRIDGE NO. 50N												BW		09/22					
I-89 NB OVER U.S. ROUTE 2												CHKD BY							
I-89 IMPROVEMENTS												DO		09/27					
TOWN OF MIDDLESEX-BOLTON, VERMONT												APPROV BY							
TENSOR 2108-N												SUPERVISOR		W. J. GATTI					
PROJ NO. IM-089-2(26)												Q.A.							
CUSTOMER: VERMONT AGENCY OF TRANSPORTATION																			
CASCO BAY STEEL STRUCTURES, INC.												JOB NO.		DRG. NO.					
75 SPRING HILL ROAD												123-50N		601					
PHONE (207) 282-7360												SACO, MAINE 04072							
												FAX. (207) 282-1179		REV. <input type="checkbox"/>					