

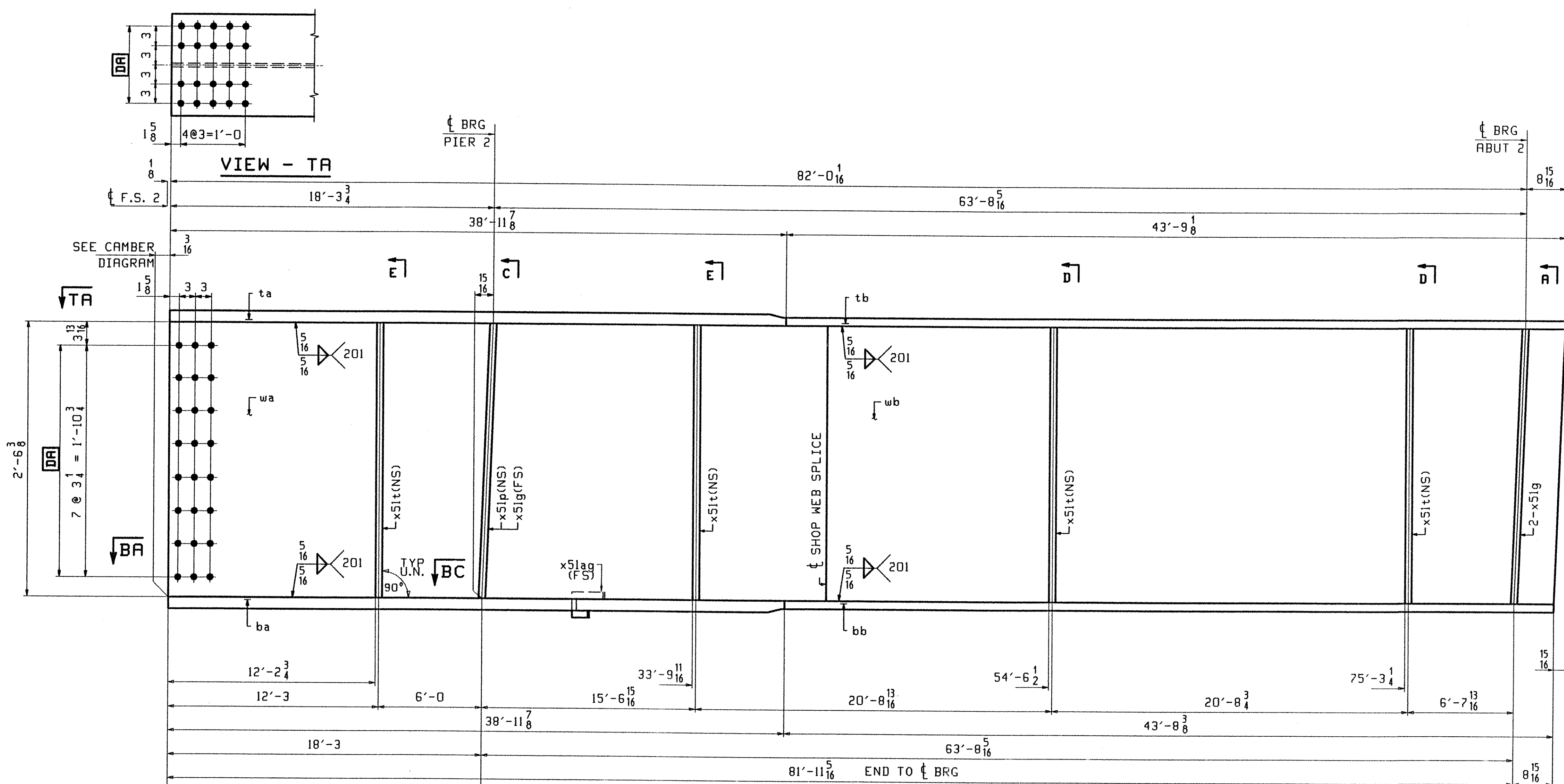
ABM INFO		SHIP	BILL OF MATERIAL				JOB NO.	DRAWING NO.	REV.
PAGE	LINE	MARK	QTY	MARK	MATERIAL	LENGTH FT INCHES	REMARKS	WT	PROCUREMENT NOTES
		GIC	1		GIRDER			13675	
502	N		1	wa	PL 1/2 x 30 3/8	41 4/8	(M270-50HT2) (H2-3)		
502	J		1	wb	PL 1/2 x 30 3/8	41 4/8	(M270-50HT2) (H2-3)		
501	H		1	ta	PL 1/8 x 16	38 11/8	(M270-50HT2) (H2-3)		
501	V		1	tb	PL 7/8 x 16	43 9/8	(M270-50HT2) (H2-3)		
501	D		1	ba	PL 1 3/16 x 16	38 7/8	(M270-50HT2) (H2-3)		
501	V		1	bb	PL 7/8 x 16	43 9/8	(M270-50HT2) (H2-3)		
503	M		4	x51t	PL 1/2 x 5	2 6/8	(M270-50H)		
503	K		1	x51p	PL 7/8 x 7 3/4	2 6/8	(M270-50H)		
503	K		3	x51g	PL 7/8 x 7 3/4	2 6/8	(M270-50H)		
503	P		1	x51ag	PL 1/4 x 3 1/2	0 10 5/8	(M270-50H)		

TVGA
Engineering, Surveying, P.C.

NO EXCEPTIONS TAKEN
 FURNISH AS CORRECTED
 REVISE AND RESUBMIT
 REJECTED

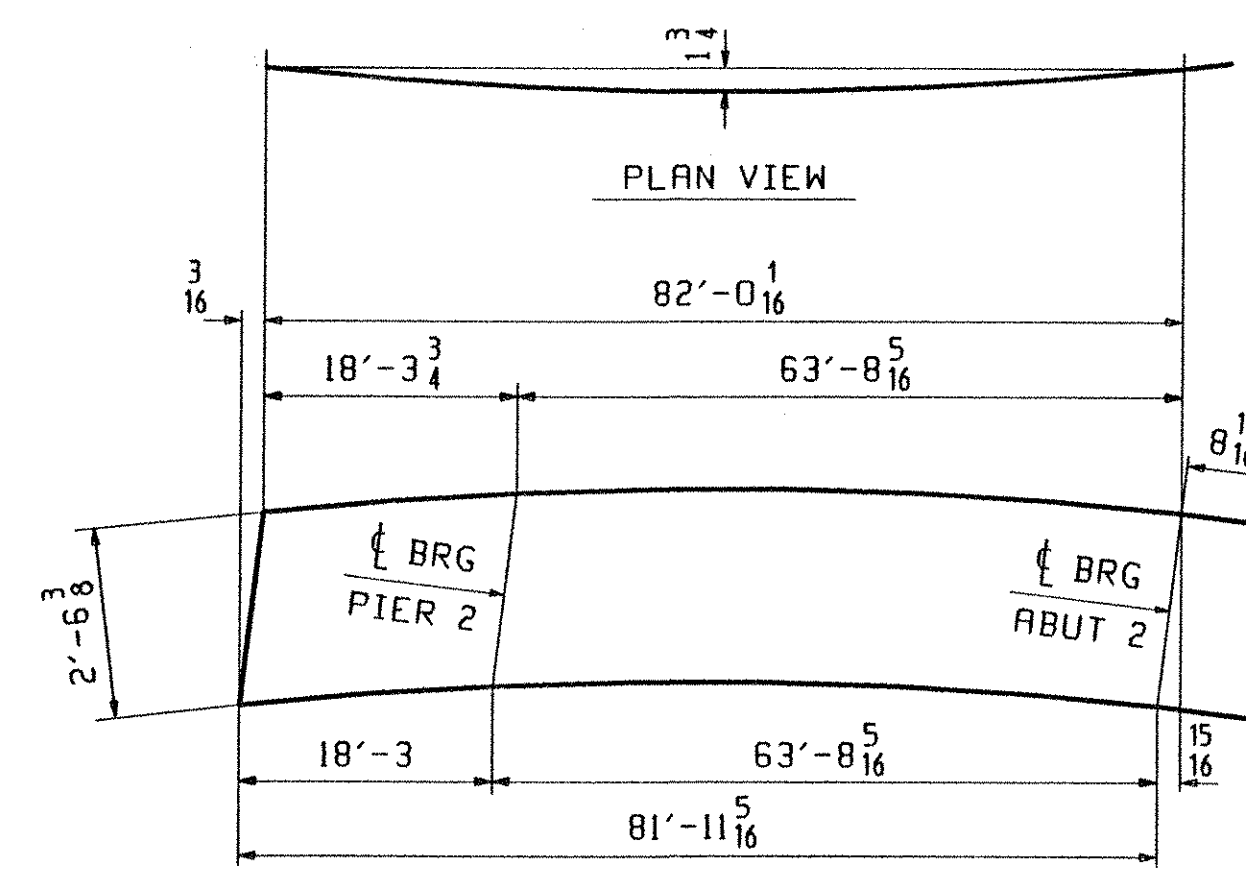
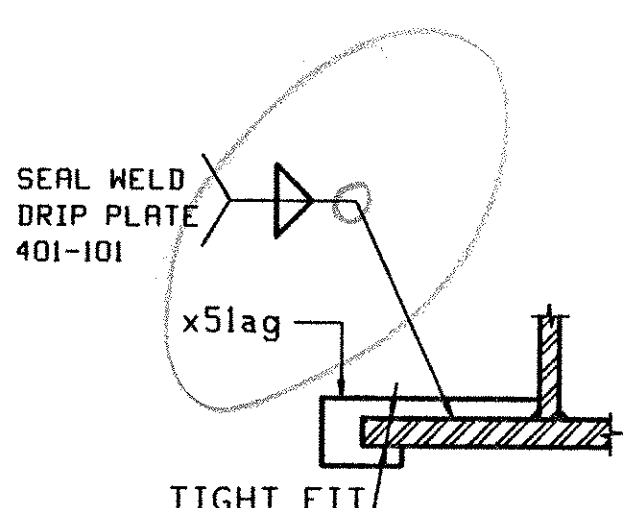
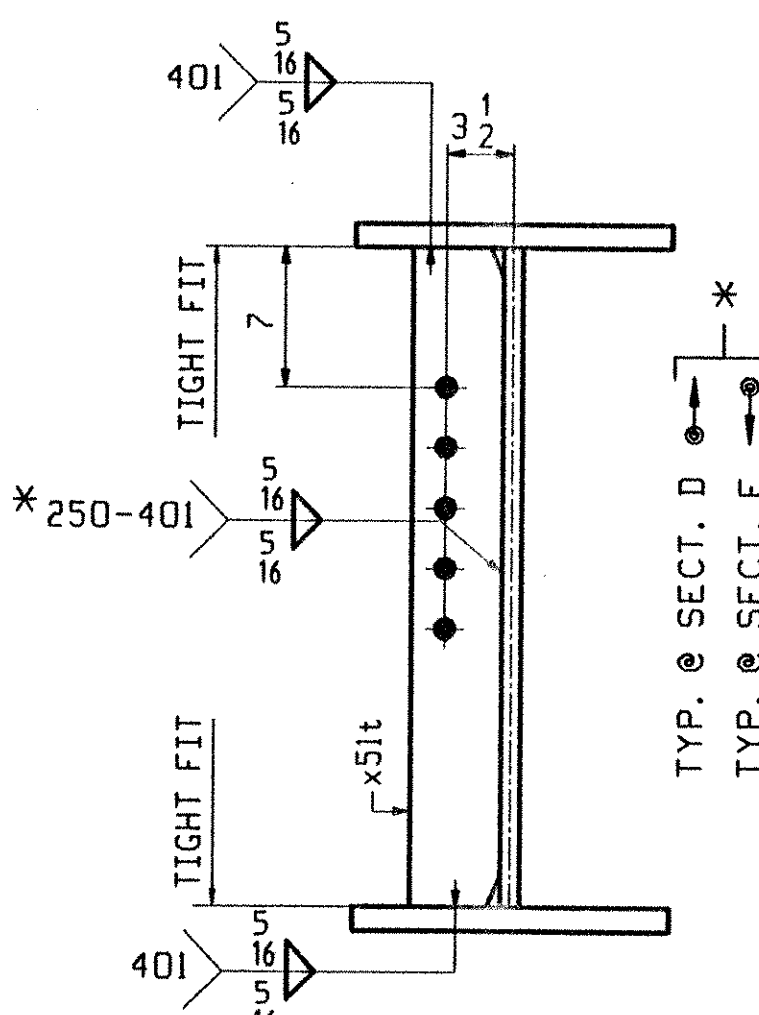
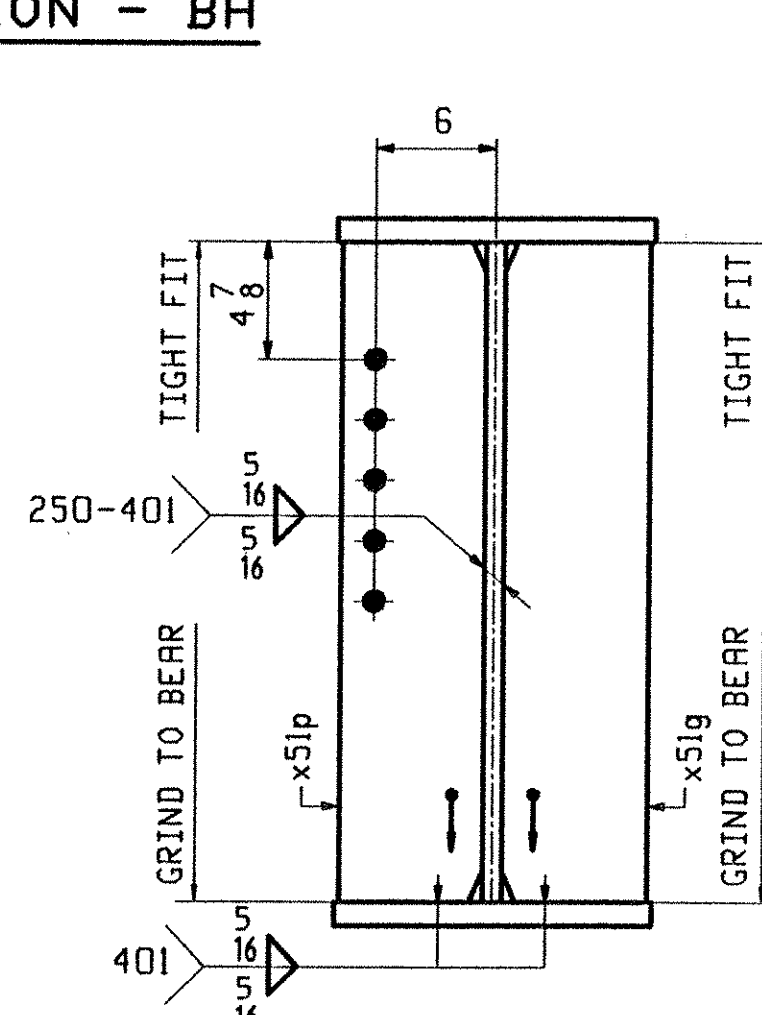
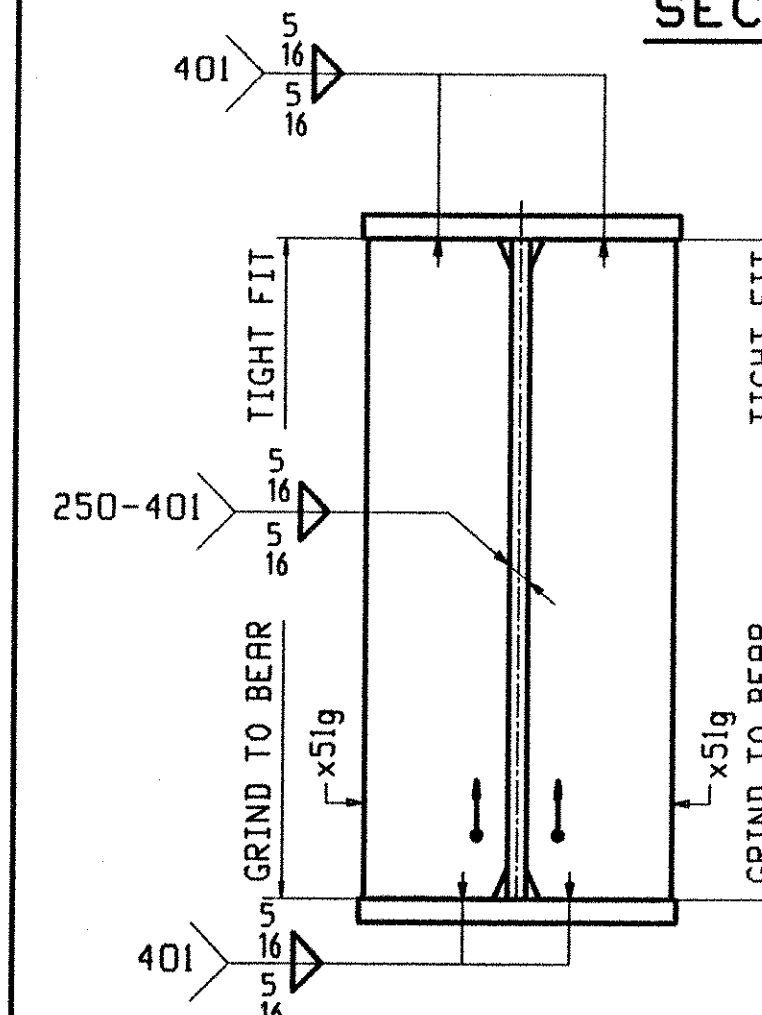
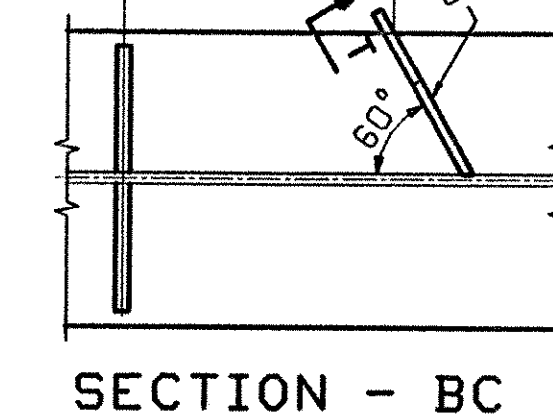
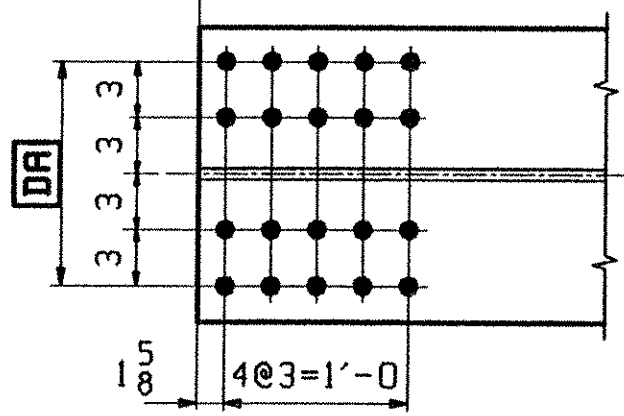
ENGINEER has reviewed Shop Drawings and Samples and other data which Contractor is required to submit, and in compliance with the contract, given to the Contract Documents and compliance with the design concept of the completed Project as a condition of work as indicated in the Contract Documents. Such review does not constitute an approval of construction or to safety practices and programs. Contractor is responsible for compliance to the contract and all corrected at the job site for information that pertains solely to the fabrication processes or to techniques of construction and for completion of the work of all trades.

BY: PT. W. S. J.
DATE: 5/3/01



ONE - GIRDER - GIC

1. FOR GIRDER STANDARD DETAILS SEE DRAWING X51.
2. FOR CAMBER AND FLANGE DIAGRAMS SEE DRAWING C503.
3. FOR GENERAL NOTES SEE DRAWING GN501.



DEV. CAMBER DIAGRAM
SEE DWG. C503

OUT FOR APPROVAL	4-5-01								
ISSUED TO SHOP									
FIELD & OFFICE									

REV.	REMARKS	DATE	DWN	CHK	APP	Q.A.	NO.	DIA.	LGT	TYPE	WASHER
	MATERIAL:										
	M270 GR 50W										
	ELECTRODES:										
	HOLES:										
	15/16 Ø (UN)										
	SHOP BOLTS:										
	7/8 Ø (UN)										
	SURFACE PREP. & PAINT:										
	-STEEL WITHIN 10'-0 OF ABUT 1 SHALL BE PAINTED (SEE GN501)										
	-ALL OTHER STEEL SHALL BE BLAST CLEANED AND LEFT UNPAINTED.										
	DESCRIPTION: GIRDER - GIC										
	DRAWN BY DATE										
	JOB: BRIDGE NO. 50S										
	I-89 SB OVER U.S. ROUTE 2										
	I-89 IMPROVEMENTS										
	TOWN OF MIDDLESEX-BOLTON, VERMONT										
	APPROV BY										
	SUPERVISOR W. J. GATTI										
	PROJ NO. IM-089-2(26)										
	Q.A.										
	CUSTOMER: VERMONT AGENCY OF TRANSPORTATION										
	CASCO BAY STEEL STRUCTURES, INC.										
	JOB NO. DRG. NO.										
	75 SPRING HILL ROAD SACO, MAINE 04072 122-505 511										
	PHONE (207) 282-7360 FAX. (207) 282-1179										
	REV. <input checked="" type="checkbox"/>										