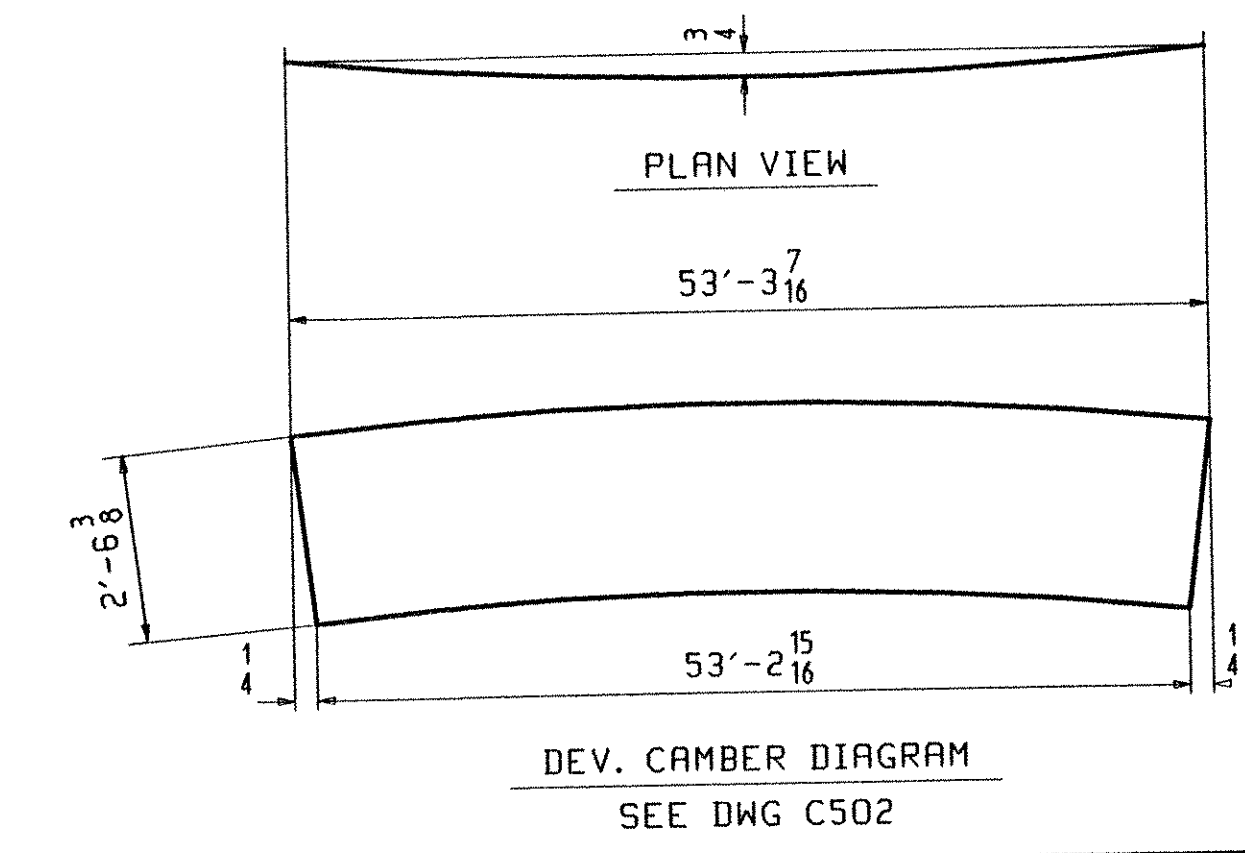
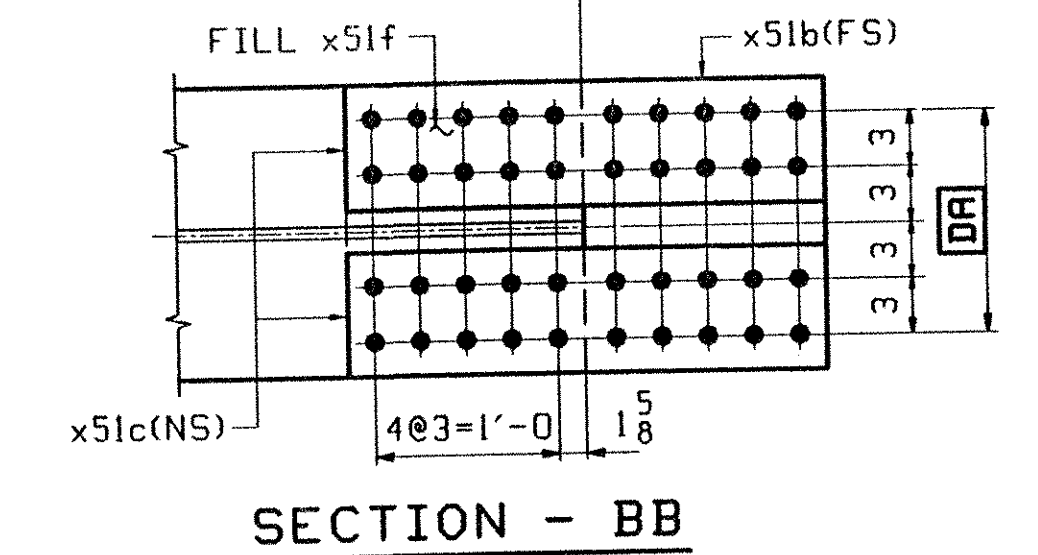


**ONE - GIRDER - G5B**

1. FOR GIRDER STANDARD DETAILS SEE DRAWING X51.
2. FOR CAMBER AND FLANGE DIAGRAMS SEE DRAWING C502.
3. FOR GENERAL NOTES SEE DRAWING GN501.



JOB NO.		DRAWING NO.		REV.	
JOB NO.		DRAWING NO.		REV.	
502	C	1	wa	PL 1/2 x 30 3/8	53 3/4 (M270-50HT2) (H2-3)
501	P	1	ta	PL 3/8 x 16	53 3/4 (M270-50HT2) (H2-3)
501	P	1	ba	PL 3/8 x 16	53 2 1/2 (M270-50HT2) (H2-3)
503	B	4	x51a	PL 1/2 x 26 1/4	1 7 (M270-50HT2) (H2-3)
503	C	4	x51b	PL 3/8 x 16	2 7 (M270-50HT2) (H2-3)
503	D	8	x51c	PL 3/8 x 7	2 7 (M270-50HT2) (H2-3)
503	F	2	x51d	PL 1/4 x 16	1 3 3/8 (M270-50H) FILL
503	G	2	x51f	PL 3/8 x 16	1 3 3/8 (M270-50H) FILL
503	M	1	x51w	PL 1/2 x 5	2 6 3/8 (M270-50H)
503	M	1	x51ab	PL 1/2 x 5	2 6 3/8 (M270-50H)

**TVGA**  
Engineering, Surveying, P.C.

NO EXCEPTIONS TAKEN  REJECTED  
 FURNISH AS CORRECTED  REJECTED  
 REVISE AND RESUBMIT

ENGINEER has reviewed Shop Drawings and Samples and other data which Contractor is required to submit, and for compliance with the Instructions given in the Contract Documents and consistency with the design concept of the complete Project as a condition of the award of the Contract Documents. Contractor is responsible for dimensions to be confirmed and corrected at the job site for information that pertains to the fabrication, erection or to techniques of construction, and for coordination of the work of all trades.

BY: *W. S. T.*  
DATE: 5/3/01

OUT FOR APPROVAL	4501											
OUT FOR APPROVAL												
ISSUED TO SHOP												
FIELD & OFFICE												
REV.	REMARKS	DATE	DWN	CHK	APP	Q.A.	NO.	DIA.	LGT	TYPE	WASHER	
	MATERIAL:	ELECTRODES:		HOLES:		SHOP BOLTS:						
	M270 GR 50W			15/16 φ (UN)		7/8 φ (UN)						
SURFACE PREP. & PAINT:												
-STEEL WITHIN 10'-0" OF ABUT 1 SHALL BE PAINTED (SEE GN501)												
-ALL OTHER STEEL SHALL BE BLAST CLEANED AND LEFT UNPAINTED.												
DESCRIPTION: GIRDER - G5B										DRAWN BY		DATE
JOB: BRIDGE NO. 505										PHG		03/09/01
1-89 SB OVER U.S. ROUTE 2										CHKD BY		
1-89 IMPROVEMENTS										TRM		04/03/01
TOWN OF MIDDLESEX-BOLTON, VERMONT										APPROV BY		W. J. GATTI
PROJ NO. IM-089-2(26)										SUPERVISOR		Q.A.
CUSTOMER: VERMONT AGENCY OF TRANSPORTATION										JOB NO.		DRG. NO.
CASCO BAY STEEL STRUCTURES, INC.										122-505		510
75 SPRING HILL ROAD SACO, MAINE 04072										PHONE (207) 282-7360		FAX (207) 282-1179
										REV.		▲