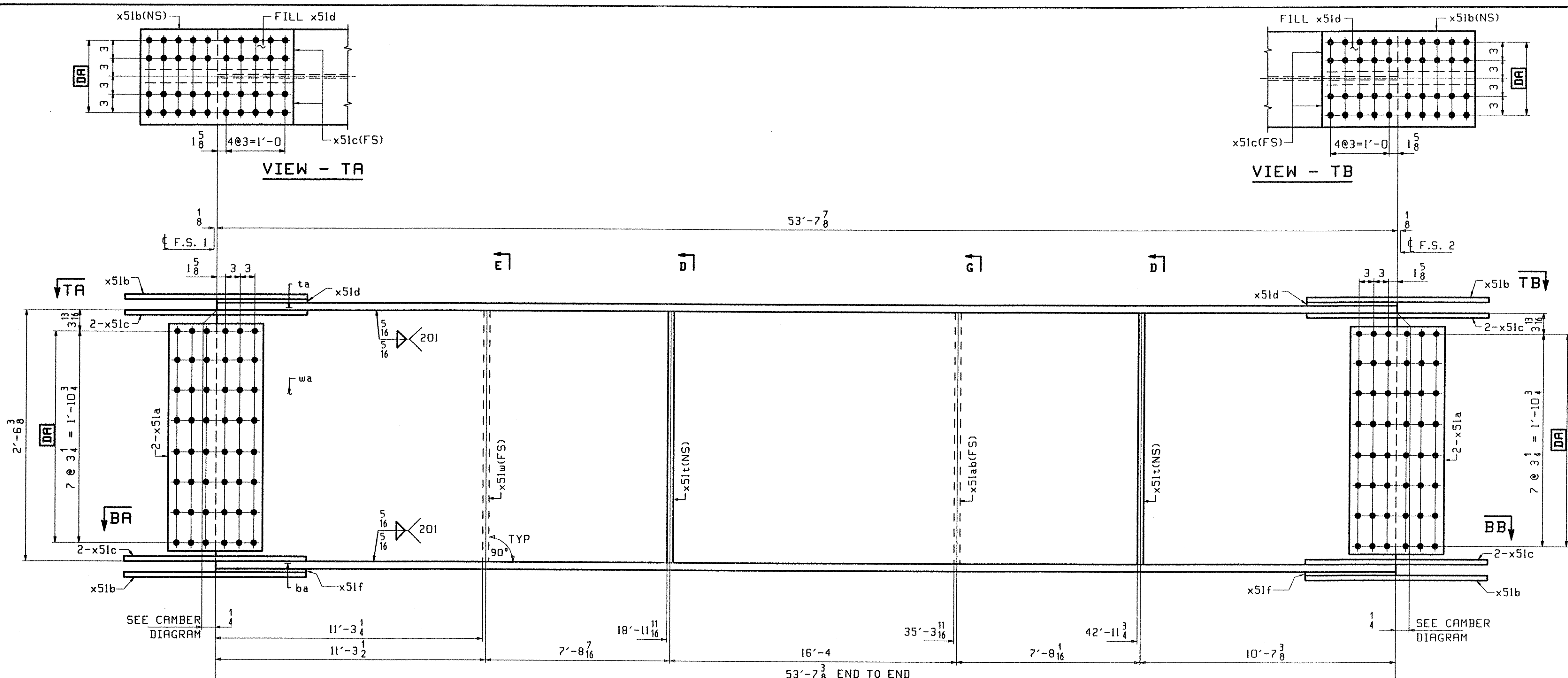
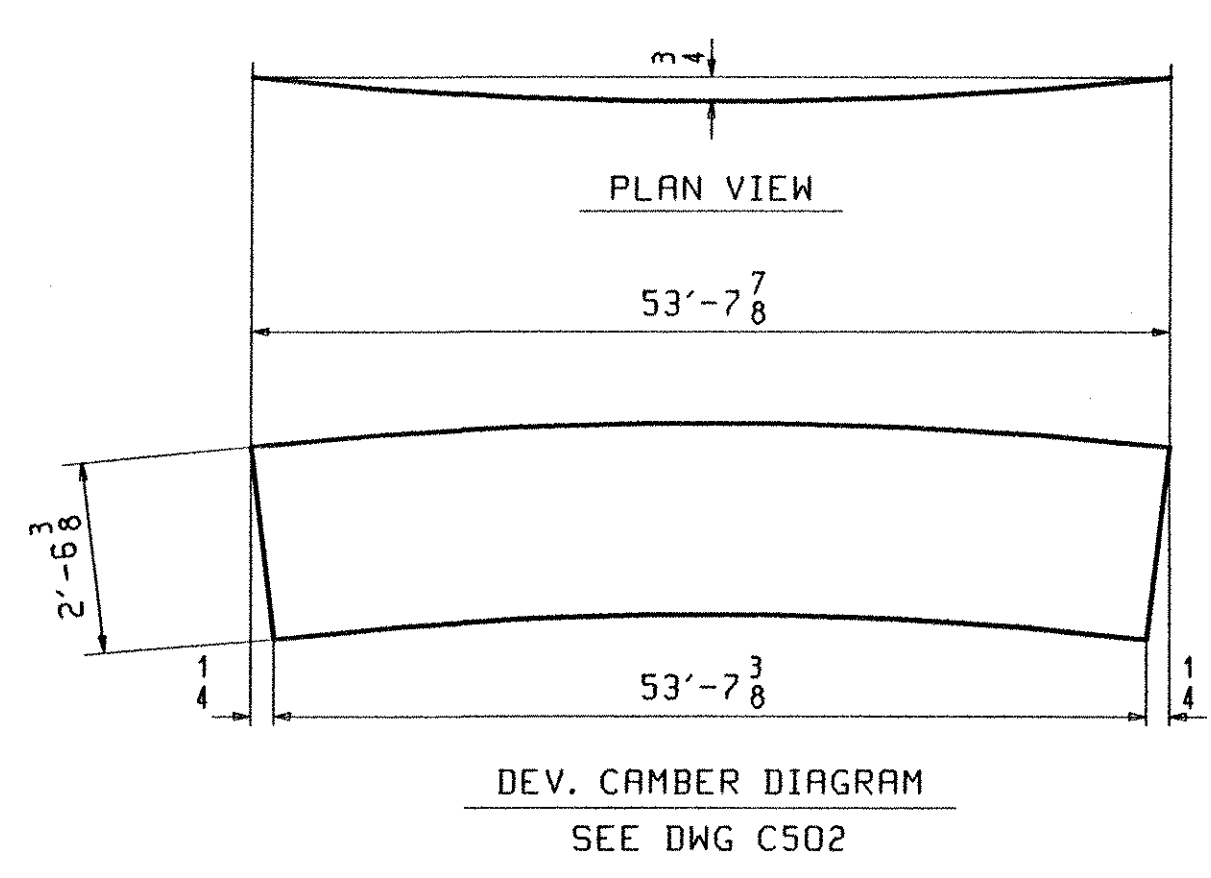
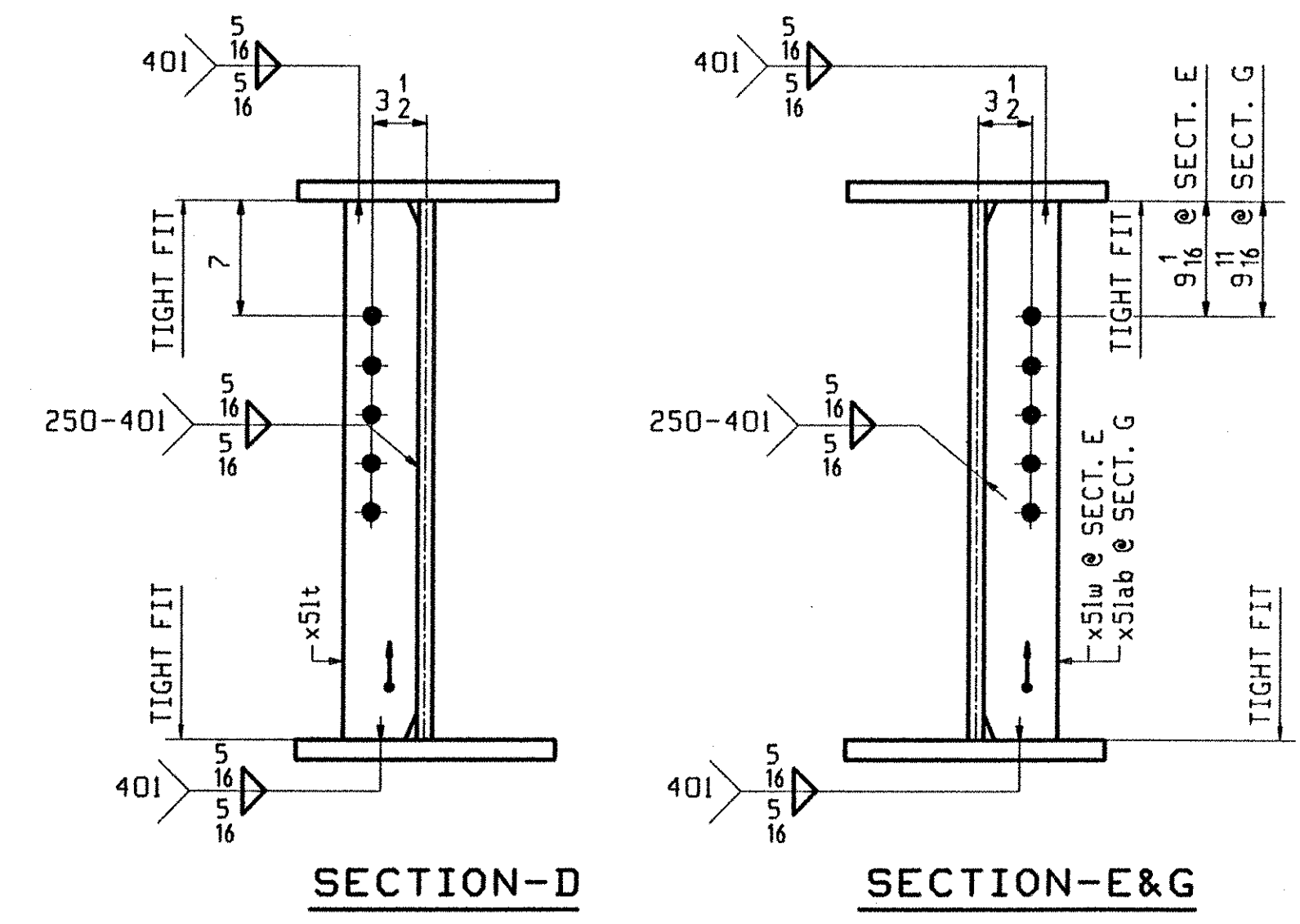
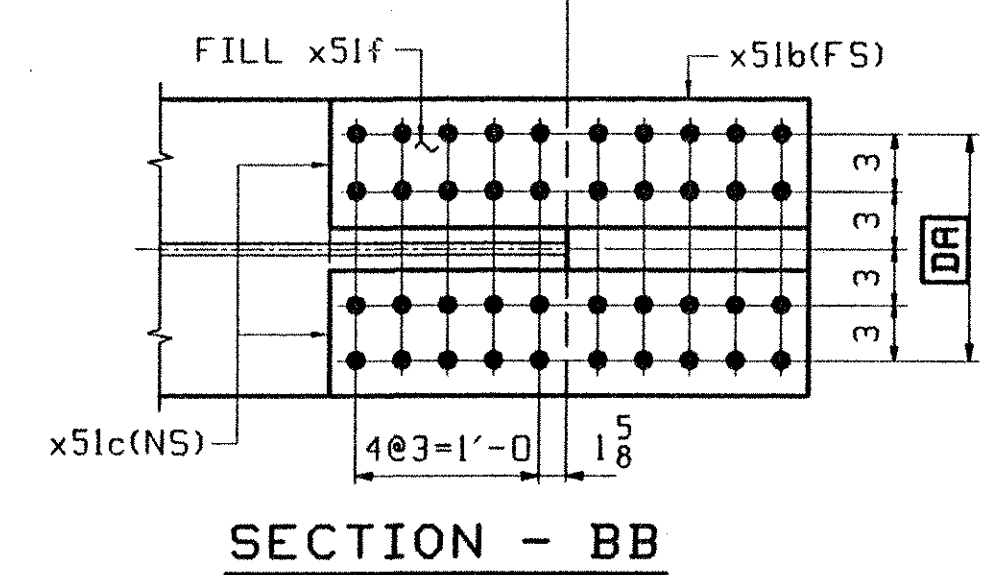
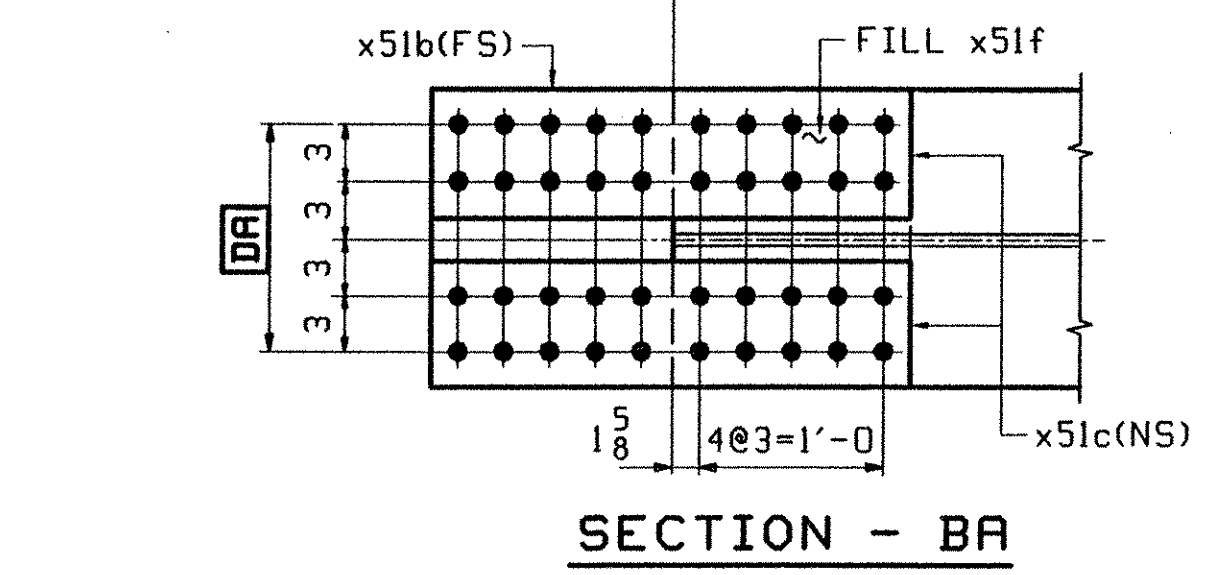


JOB NO.		DRAWING NO.		REV.				
507		507						
ABM INFO	SHIP	BILL OF MATERIAL		REMARKS	WT	PROCUREMENT NOTES		
PAGE	LINE	MARK	QTY	MARK	MATERIAL	LENGTH FT INCHES		
		G2B	1		GIRDER		8990	
501	Z	1	wa		PL $\frac{1}{2}$ x 30 $\frac{3}{8}$	53 7 $\frac{7}{8}$	(M270-50HT2) (H2-3)	
501	K	1	ta		PL $\frac{7}{8}$ x 16	53 7 $\frac{7}{8}$	(M270-50HT2) (H2-3)	
501	K	1	ba		PL $\frac{7}{8}$ x 16	53 7 $\frac{7}{8}$	(M270-50HT2) (H2-3)	
503	B	4	x51a		PL $\frac{1}{2}$ x 26 $\frac{1}{4}$	1 7	(M270-50HT2) (H2-3)	
503	C	4	x51b		PL $\frac{5}{8}$ x 16	2 7	(M270-50HT2) (H2-3)	
503	D	8	x51c		PL $\frac{5}{8}$ x 7	2 7	(M270-50HT2) (H2-3)	
503	F	2	x51d		PL $\frac{1}{4}$ x 16	1 3 $\frac{3}{8}$	(M270-50H) FIL	
503	G	2	x51f		PL $\frac{5}{16}$ x 16	1 3 $\frac{3}{8}$	(M270-50H) FIL	
503	M	1	x51w		PL $\frac{1}{2}$ x 5	2 6 $\frac{3}{8}$	(M270-50H)	
503	M	2	x51t		PL $\frac{1}{2}$ x 5	2 6 $\frac{3}{8}$	(M270-50H)	
503	M	1	x51ab		PL $\frac{1}{2}$ x 5	2 6 $\frac{3}{8}$	(M270-50H)	



ONE - GIRDER - G2B

1. FOR GIRDER STANDARD DETAILS SEE DRAWING X51.
2. FOR CAMBER AND FLANGE DIAGRAMS SEE DRAWING C502.
3. FOR HORIZONTAL CURVING DIAGRAM SEE DRAWING HC501.
4. FOR GENERAL NOTES SEE DRAWING GN501.



TVGA
Engineering, Surveying, P.C.

NO EXCEPTIONS TAKEN REJECTED
 FURNISH AS CORRECTED
 REVISE AND RESUBMIT

ENGINEER has reviewed Shop Drawings and Samples and other data which Contractor is required to submit, only for conformance with the information given in the Contract Documents and compliance with the intent of the Contract Documents. Such review shall not be construed as a guarantee, warranty, or assurance of construction or to safety, or to the accuracy of the information provided. Contractor is responsible for providing all information and for coordination of the work of all trades.

BY: *P. W. S. C.*
DATE: 5/3/01

OUT FOR APPROVAL	4/5/01																				
OUT FOR APPROVAL																					
ISSUED TO SHOP																					
FIELD & OFFICE																					
REV.	REMARKS	DATE	DWN	CHK	APP	Q.A.	NO.	DIA.	LGT	TYPE	WASHER										
MATERIAL:	M270 GR 50W																				
ELECTRODES:																					
HOLES:	15/16 Ø (UN)																				
SHOP BOLTS:	7/8 Ø (UN)																				
SURFACE PREP. & PAINT:																					
-STEEL WITHIN 10'-0 OF ABUT I SHALL BE PAINTED (SEE GN501)																					
-ALL OTHER STEEL SHALL BE BLAST CLEANED AND LEFT UNPAINTED.																					
DESCRIPTION: GIRDER - G2B										DRAWN BY		DATE									
JOB: BRIDGE NO. 505										PHG		03/09/01									
I-89 SB OVER U.S. ROUTE 2										CHKD BY											
I-89 IMPROVEMENTS										TRM		04/03/01									
TOWN OF MIDDLESEX-BOLTON, VERMONT										APPROV BY											
PROJ NO. IM-089-2(26)										SUPERVISOR		H. J. GATTI									
CUSTOMER: VERMONT AGENCY OF TRANSPORTATION										Q.A.											
CASCO BAY STEEL STRUCTURES, INC.										JOB NO.		DRG. NO.									
75 SPRING HILL ROAD										SACO, MAINE 04072		122-505		507							
PHONE (207) 282-7360										FAX. (207) 282-1179											
										REV.		△									