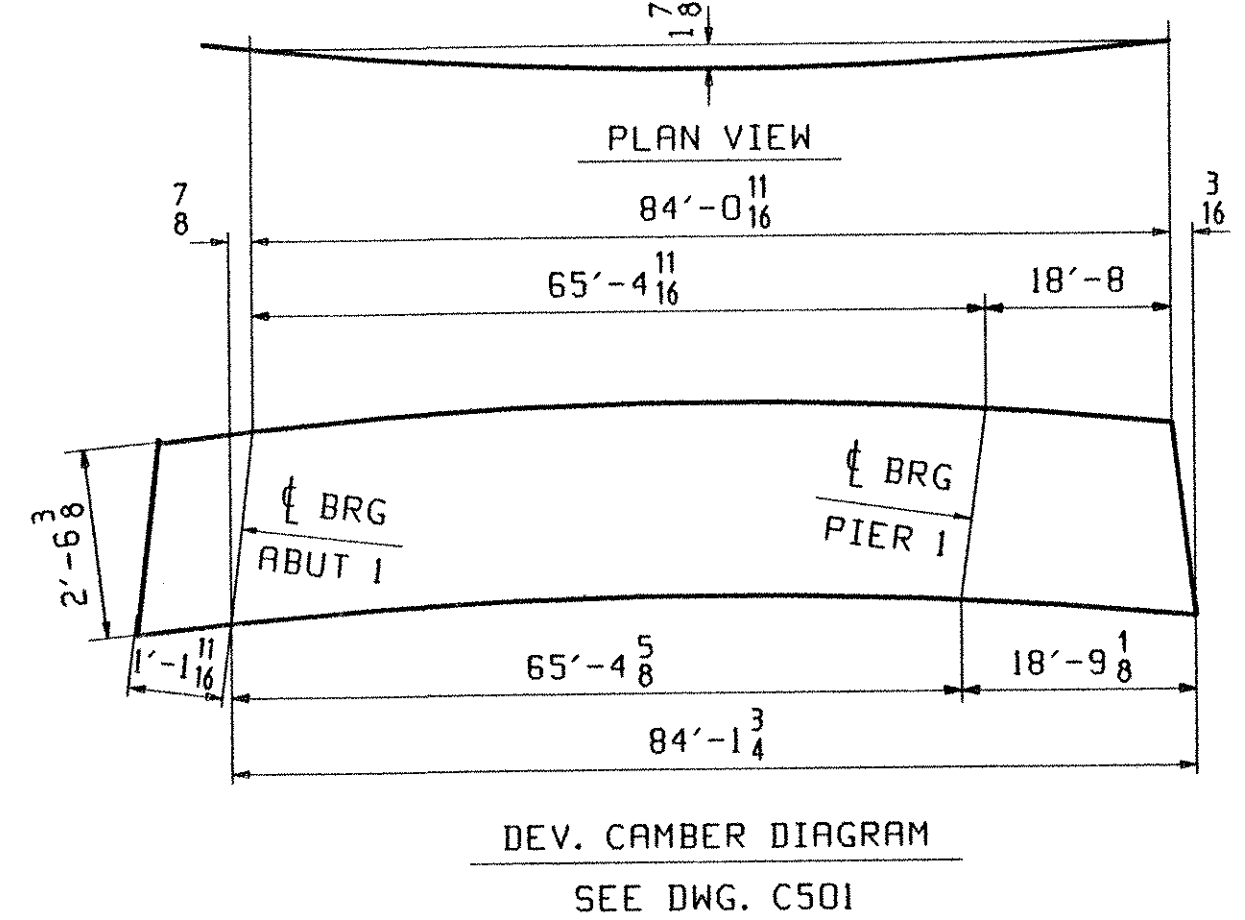
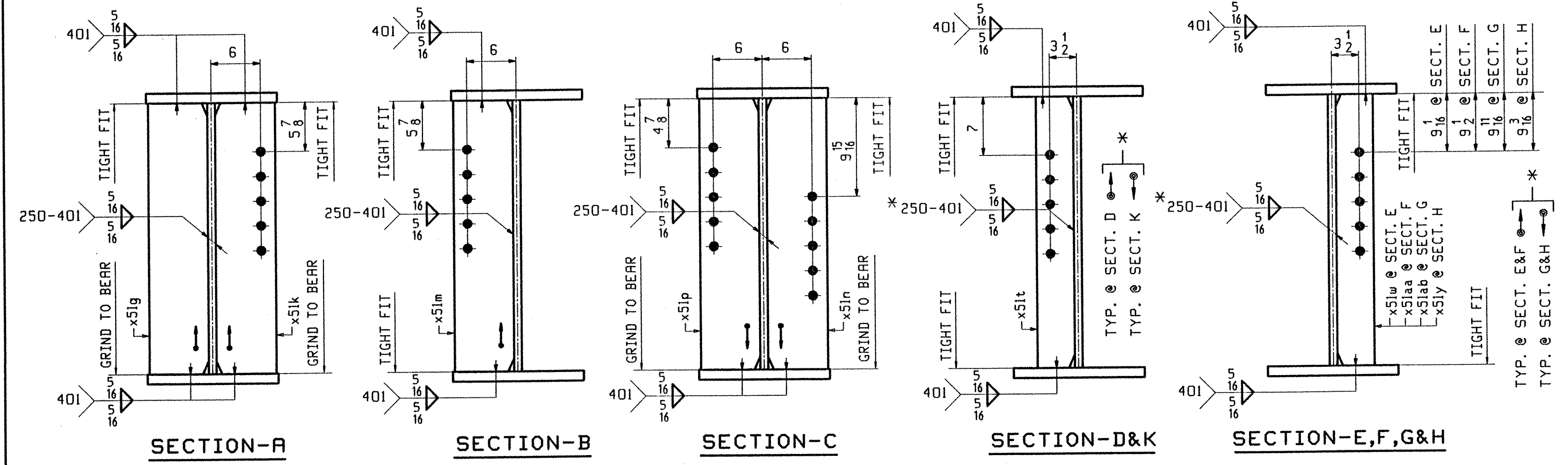
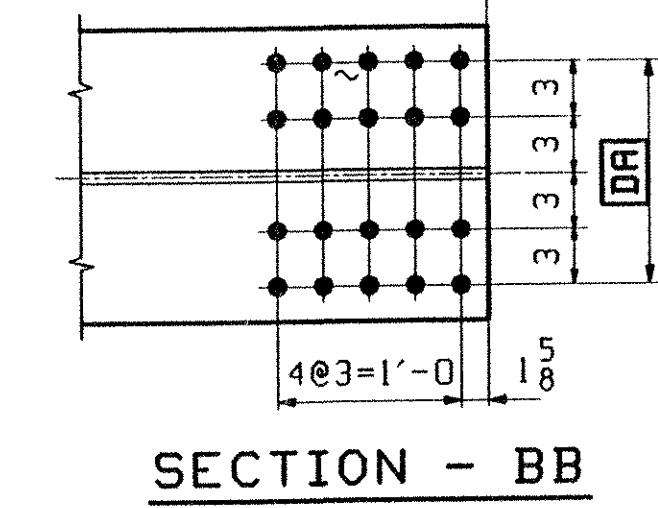


ONE - GIRDER - G3A

1. FOR GIRDER STANDARD DETAILS SEE DRAWING X51.
2. FOR CAMBER AND FLANGE DIAGRAMS SEE DRAWING C501.
3. FOR GENERAL NOTES SEE DRAWING GN501.



BILL OF MATERIAL							JOB NO.	DRAWING NO.	REV.
ABM INFO	SHIP	MARK	QTY	MARK	MATERIAL	LENGTH FT INCHES	REMARKS	WT	PROCUREMENT NOTES
		G3A	1		GIRDER				14195
502	E		1	wa	PL 1/2 x 30 3/8	42 7 9/16	(M270-50HT2) (H2-3)		
502	S		1	wb	PL 1/2 x 30 3/8	42 7 9/16	(M270-50HT2) (H2-3)		
501	T		1	ta	PL 7/8 x 16	45 11 1/2	(M270-50HT2) (H2-3)		
501	F		1	tb	PL 1 1/8 x 16	39 2 7/8	(M270-50HT2) (H2-3)		
501	R		1	ba	PL 7/8 x 16	46 0 1/16	(M270-50HT2) (H2-3)		
501	B		1	bb	PL 1 1/8 x 16	39 2 7/8	(M270-50HT2) (H2-3)		
503	K		1	x51g	PL 7/8 x 7 3/4	2 3 3/8	(M270-50W)		
503	K		1	x51k	PL 7/8 x 7 3/4	2 3 3/8	(M270-50W)		
503	K		1	x51m	PL 7/8 x 7 3/4	2 3 3/8	(M270-50W)		
503	M		1	x51w	PL 2 x 5	2 3 3/8	(M270-50W)		
503	M		4	x51t	PL 2 x 5	2 3 3/8	(M270-50W)		
503	M		1	x51aa	PL 2 x 5	2 3 3/8	(M270-50W)		
503	M		1	x51ab	PL 2 x 5	2 3 3/8	(M270-50W)		
503	K		1	x51p	PL 7/8 x 7 3/4	2 3 3/8	(M270-50W)		
503	K		1	x51n	PL 7/8 x 7 3/4	2 3 3/8	(M270-50W)		
503	M		1	x51y	PL 2 x 5	2 3 3/8	(M270-50W)		

TVGA
Engineering, Surveying, P.C.

NO EXCEPTIONS TAKEN
 TO FURNISH AS CORRECTED
 TO REVISE AND RESUBMIT

ENGINEER has reviewed Shop Drawings and Samples and other data which Contractor is required to submit, only for conformance with the information shown in the Contract Documents. Contractor is responsible for information that construction or to safety precautions and progress incident herein. Contractor is responsible for information that construction and completed at the job site for information that pertains solely to the fabricator's processes or to techniques of construction, and for coordination of the work of all trades.

BY: *Pat W. S. J.*
DATE: *5/3/01*

OUT FOR APPROVAL	4-5-01										
ISSUED TO SHOP											
FIELD & OFFICE											
REV.	REMARKS	DATE	DWN	CHK	APP	Q.A.	NO.	DIA.	LGT	TYPE	WASHER
MATERIAL:	M270 GR 50W	ELECTRODES:									
		HOLES:									
		SHOP BOLTS:									
SURFACE PREP. & PAINT:											
-STEEL WITHIN 10'-0 OF ABUT 1 SHALL BE PAINTED (SEE GN501)											
-ALL OTHER STEEL SHALL BE BLAST CLEANED AND LEFT UNPAINTED.											
DESCRIPTION: GIRDER - G3A											
JOB: BRIDGE NO. 50S											
I-89 SB OVER U.S. ROUTE 2											
I-89 IMPROVEMENTS											
TOWN OF MIDDLESEX-BOLTON, VERMONT											
PROJ NO. IM-089-2(26)											
CUSTOMER: VERMONT AGENCY OF TRANSPORTATION											
CASCO BAY STEEL STRUCTURES, INC.											
75 SPRING HILL ROAD SACO, MAINE 04072											
PHONE (207) 282-7360 FAX. (207) 282-1179											
JOB NO.	122-50S	DRG. NO.	503								
REV.											