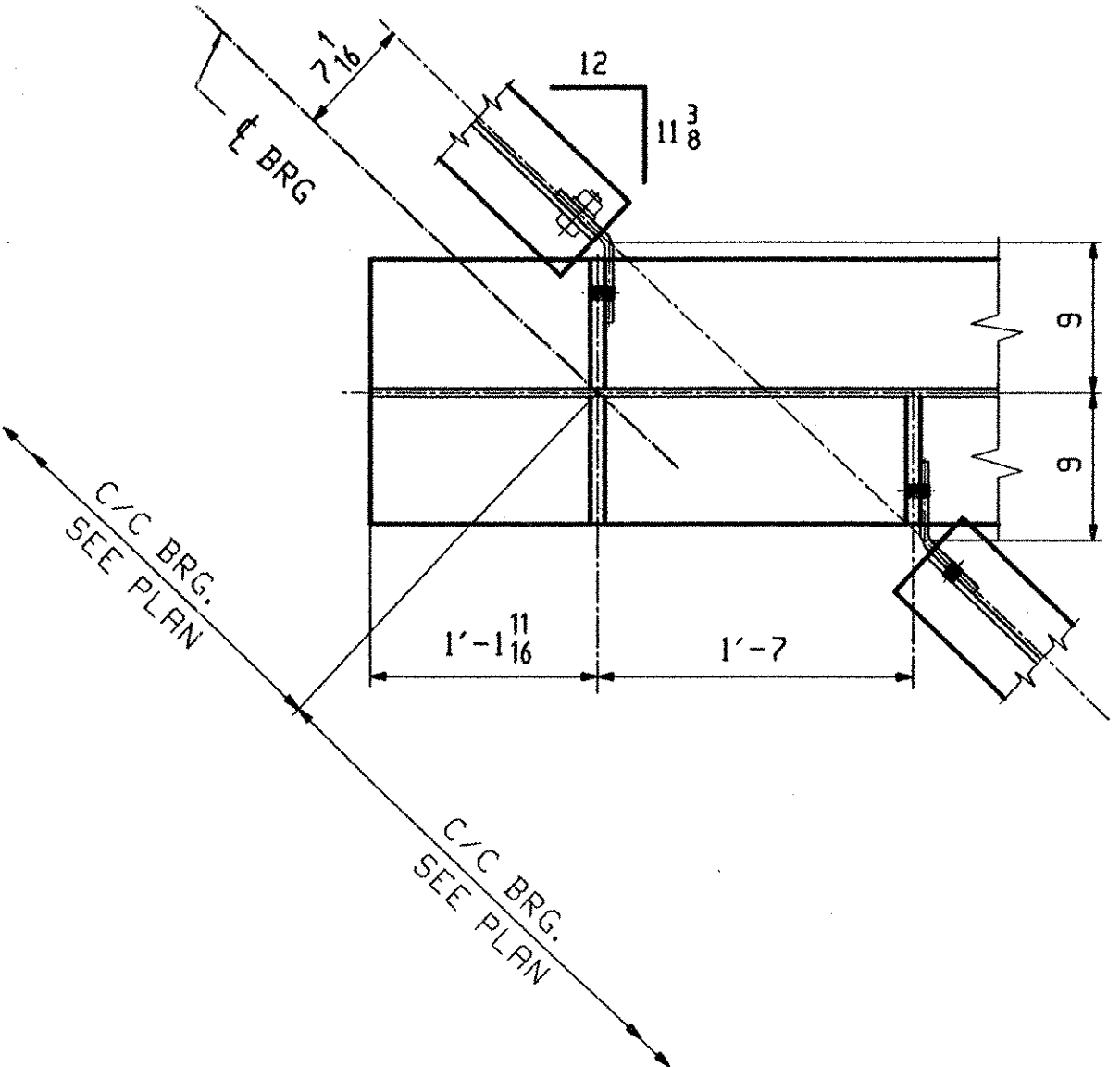
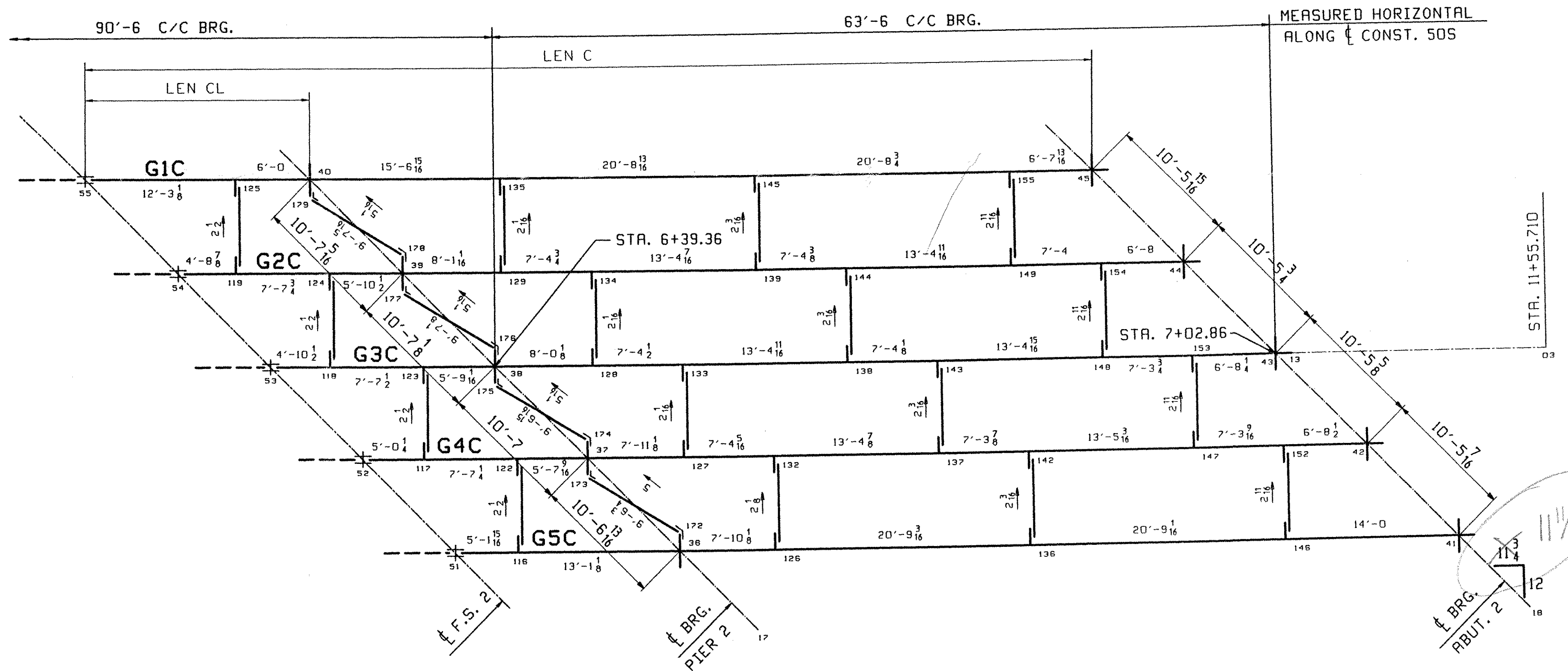


DIAPHRAGM WORKPOINTS @ PIERS



DIAPHRAGM WORKPOINTS @ ABUT 1



FRAMING PLAN

Line	LEN AL	LEN A	LEN B	LEN CL	LEN C	Abut. 1	Pier 1	Pier 2	Abut. 2
1	65'-6 7/8	84'-4 1/16	53'-9 1/16	18'-3 1/8	81'-11 7/16	.0366	.0300	.0307	.0242
2	65'-5 3/4	84'-2 15/16	53'-7 5/8	18'-3 1/8	81'-10 7/16	.0361	.0299	.0305	.0242
3	65'-4 5/8	84'-1 7/8	53'-6 1/8	18'-3 1/16	81'-9 7/16	.0361	.0299	.0305	.0241
4	65'-3 1/2	84'-0 3/4	53'-4 11/16	18'-3 1/16	81'-8 1/2	.0360	.0298	.0304	.0241
5	65'-2 1/2	83'-11 5/8	53'-3 3/16	18'-3 1/16	81'-7 7/16	.0361	.0297	.0304	.0237

**** NOTE ****
 THE PURPOSE OF THIS DRAWING IS TO COORDINATE GEOMETRIC CONTROL INFORMATION. THIS DWG IS SUBMITTED FOR INFORMATION ONLY AND IS NOT INTENDED FOR SHOP FABRICATION.

- NOTES
- LONGITUDINAL DIMENSIONS ARE SLOPING ALONG BOTT OF WEB WITH CORRECTIONS MADE FOR VERTICAL CURVE, GRADE & DL CAMBER (UN).
 - TRANSVERSE DIMENSIONS ARE IN A HORIZ. PLANE (UN).
 - ARROW POINTS TOWARDS LOW END OF MEMBER.
 - ENDS OF GIRDERS AND BRG. STIFFS ARE VERTICAL AFTER DL ROTATION.
 - CF STIFF, INT STIFF & FIELD SPLICES ARE NORMAL TO GRADE.
 - BOTT PT NUMBERS = TOP PT NUMBERS + 200
 - FOR LAYOUTS SEE DWG TD501 & TD502.
 - COMBINE CROSSFRAMES FOR DIFF IN DROPS OF +/- 3/16
 - CROSSFRAMES DROPS ARE CALCULATED IN THEIR FINAL POSITION.

TVGA
 Engineering, Surveying, P.C.

NO EXCEPTIONS TAKEN REJECTED
 FURNISH AS CORRECTED
 REVISE AND RESUBMIT

ENGINEER has reviewed Shop Drawings and Samples and other data which Contractor is required to submit, only for conformance with the information given in the Contract Documents and compliance with the design concept of the completed Project as a functioning whole as indicated in the Contract Documents. Such reviews do not extend to means, methods, techniques, sequences or procedures of construction or to safety precautions and programs incident thereto. Contractor is responsible for dimensions to be confirmed and coordinated at the job site for information that pertains solely to the fabrication processes or to techniques of construction and for coordination of the work of all trades.

BY: W. W. S. J.
 DATE: 5/3/01

OUT FOR APPROVAL	4501										
ISSUED TO SHOP											
FIELD & OFFICE											
REV.	REMARKS	DATE	DWN	CHK	APP	Q.A.	NO.	DIA.	LGT	TYPE	WASHER
MATERIAL:	ELECTRODES:	HOLE:	SHOP BOLTS:								
M270 GR 50W		15/16 Ø (UN)	7/8 Ø (UN)								
SURFACE PREP. & PAINT:											
-STEEL WITHIN 10'-0 OF ABUT 1 SHALL BE PAINTED (SEE GNS01)											
-ALL OTHER STEEL SHALL BE BLAST CLEANED AND LEFT UNPAINTED.											
DESCRIPTION:	CALCULATION PLAN								DRAWN BY	DATE	
JOB:	BRIDGE NO. 50S								JAK	02/27	
	I-89 SB OVER U.S. ROUTE 2								CHKD BY		
	I-89 IMPROVEMENTS								HL	3/01	
	TOWN OF MIDDLESEX-BOLTON, VERMONT								APPROV BY		
									SUPERVISOR	H. J. GATTI	
PROJ NO.	IM-089-2(26)								Q.A.		
CUSTOMER: VERMONT AGENCY OF TRANSPORTATION											
CASCO BAY STEEL STRUCTURES, INC.								JOB NO.	DRG. NO.		
75 SPRING HILL ROAD				SACO, MAINE 04072				122-50S	WS501		
PHONE (207) 282-7360				FAX (207) 282-1179				REV.	△		