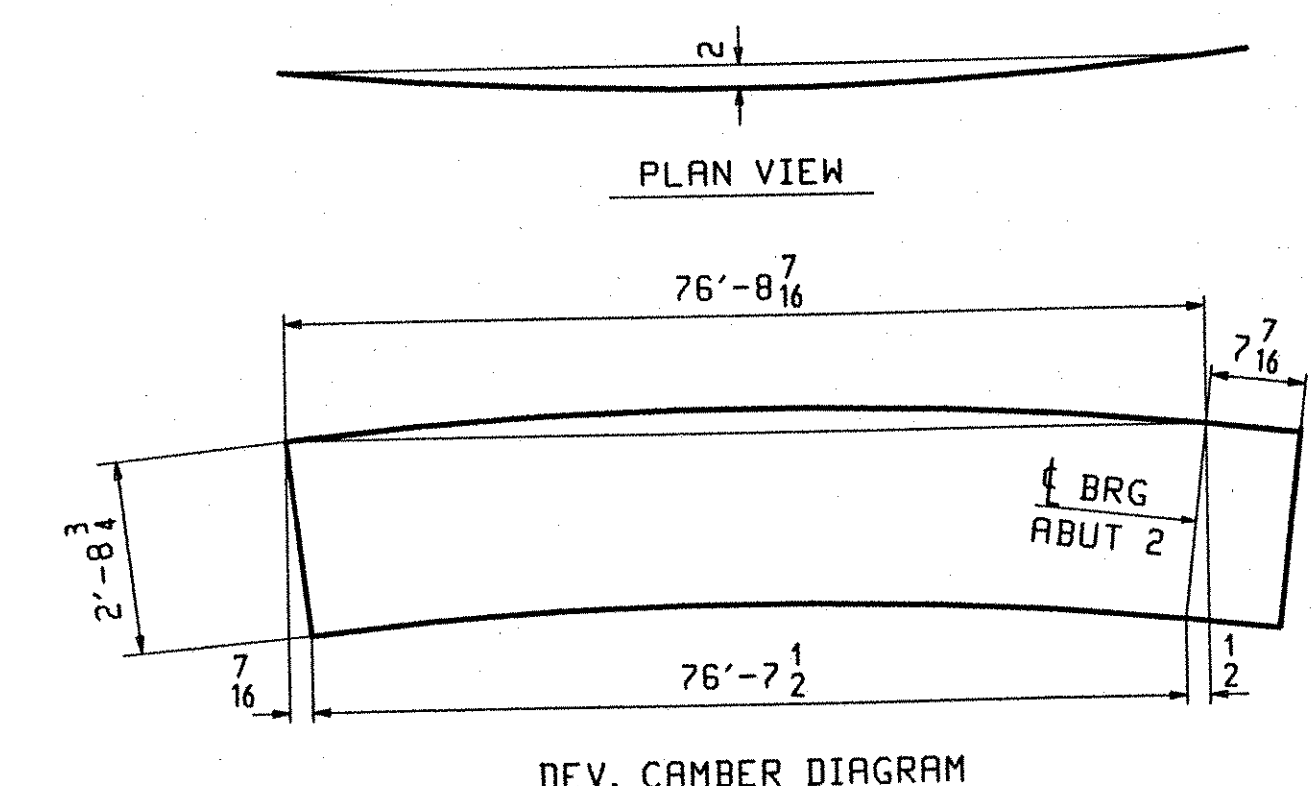
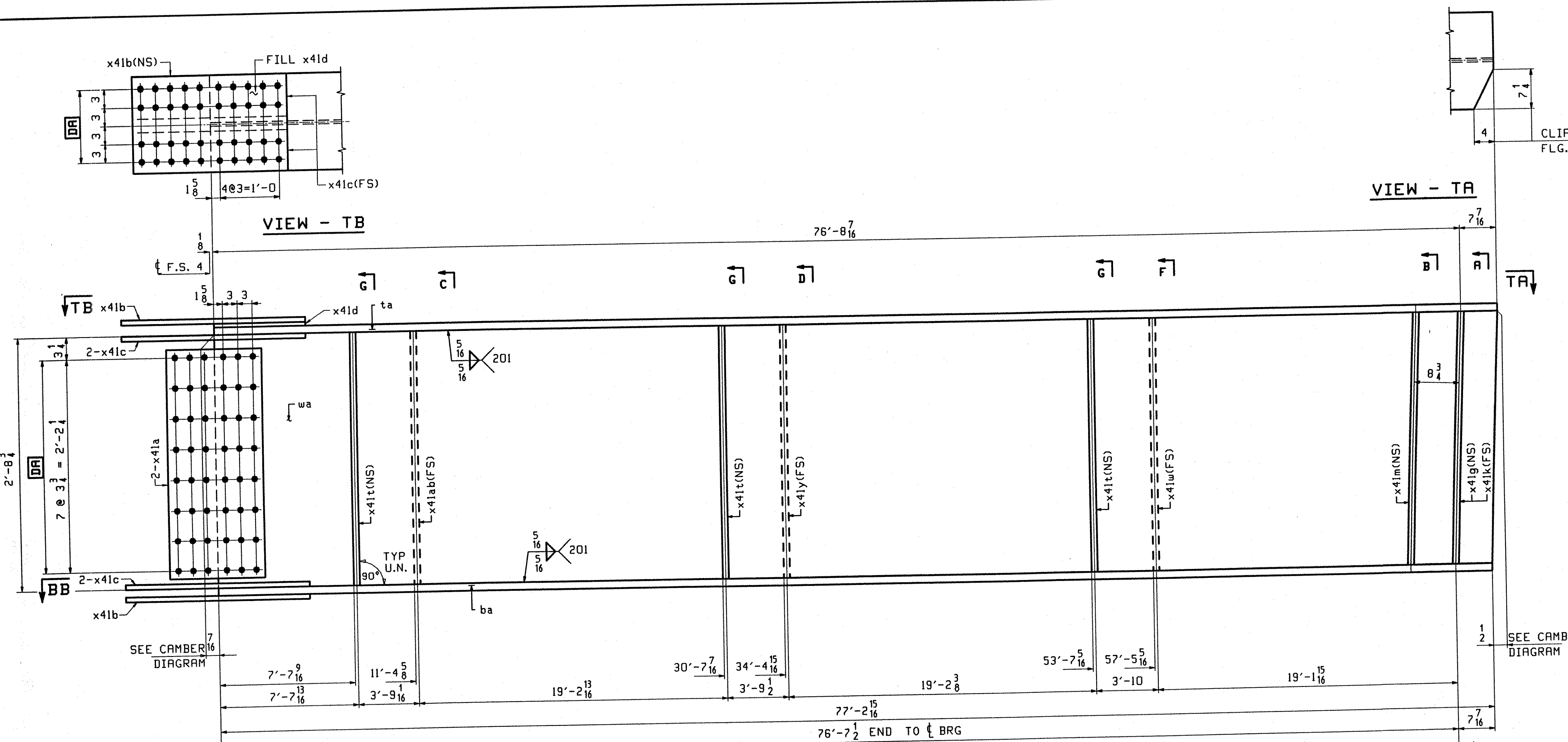


ABM INFO		BILL OF MATERIAL				JOB NO.		DRAWING NO.		REV.
PAGE	LINE	MARK	QTY	MARK	MATERIAL	LENGTH		REMARKS	WT	PROCUREMENT NOTES
						FT	INCHES			
		G4E	1		GIRDER					16182
401	L		1	wa	PL $\frac{1}{2}$ x 36 $\frac{7}{8}$	77	3 $\frac{7}{8}$	(H270-50WT2) (H2-3)		
401	G		1	ta	PL $\frac{5}{8}$ x 16	77	3 $\frac{7}{8}$	(H270-50WT2) (H2-3)		
401	A		1	ba	PL $\frac{1}{2}$ x 16	77	2 $\frac{1}{8}$	(H270-50WT2) (H2-3)		
402	B		2	x41a	PL $\frac{1}{2}$ x 29 $\frac{3}{4}$	1	7	(H270-50WT2) (H2-3)		
402	C		2	x41b	PL $\frac{5}{8}$ x 16	2	7	(H270-50WT2) (H2-3)		
402	D		4	x41c	PL $\frac{5}{8}$ x 7	2	7	(H270-50WT2) (H2-3)		
402	F		1	x41d	PL $\frac{3}{4}$ x 16	1	3 $\frac{3}{8}$	FILL		
402	M		3	x41t	PL $\frac{1}{2}$ x 5	2	8 $\frac{3}{4}$			
402	M		1	x41ab	PL $\frac{1}{2}$ x 5	2	8 $\frac{3}{4}$			
402	M		1	x41y	PL $\frac{1}{2}$ x 5	2	8 $\frac{3}{4}$			
402	M		1	x41w	PL $\frac{1}{2}$ x 5	2	8 $\frac{3}{4}$			
402	K		1	x41g	PL $\frac{7}{8}$ x 7 $\frac{1}{2}$	2	8 $\frac{3}{4}$			
402	K		1	x41m	PL $\frac{7}{8}$ x 7 $\frac{1}{2}$	2	8 $\frac{3}{4}$			
402	K		1	x41k	PL $\frac{7}{8}$ x 7 $\frac{1}{2}$	2	8 $\frac{3}{4}$			



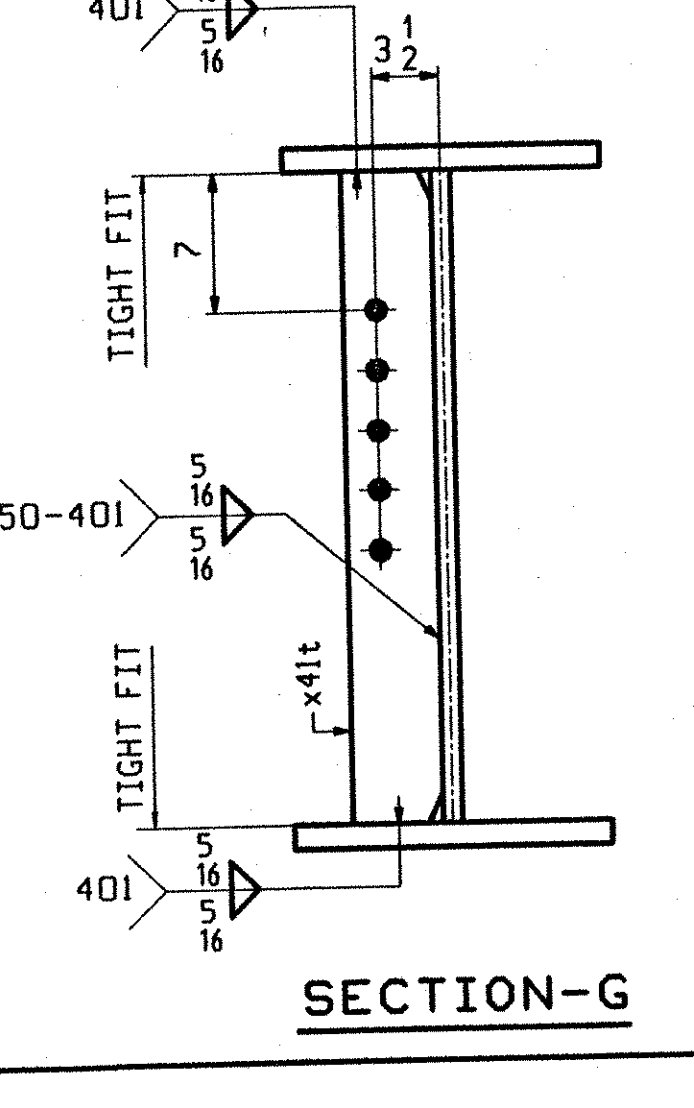
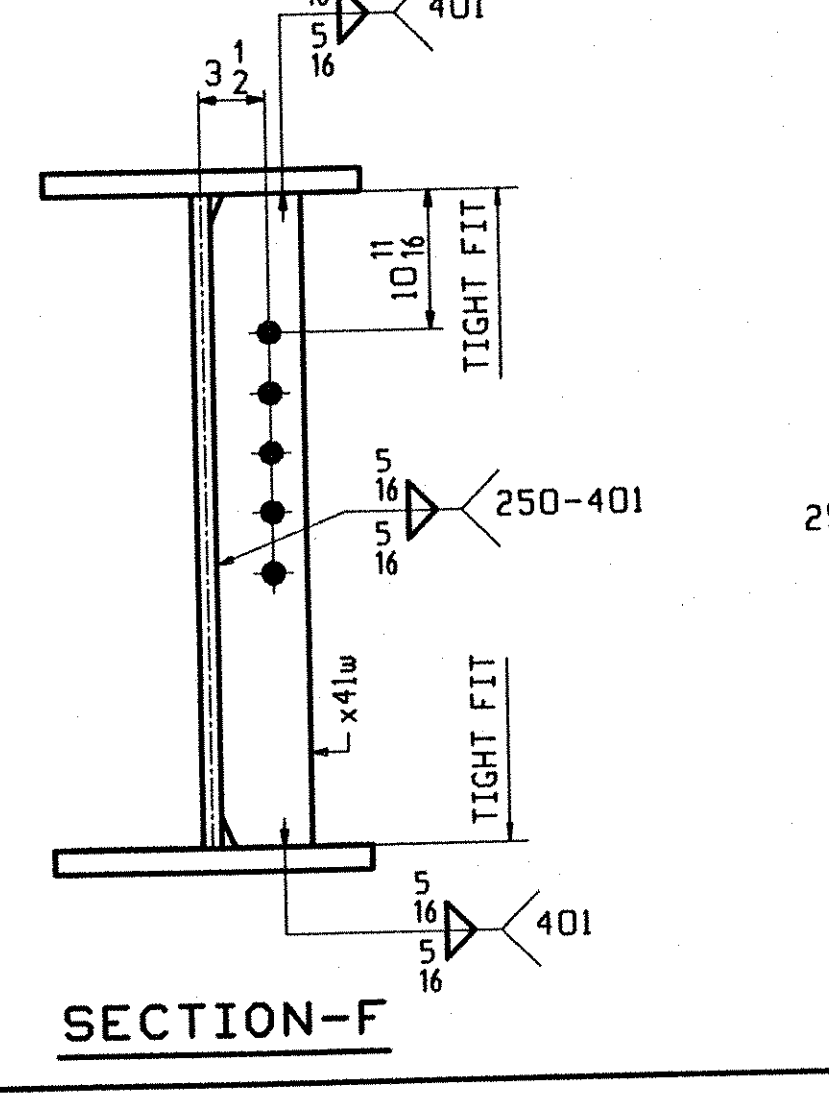
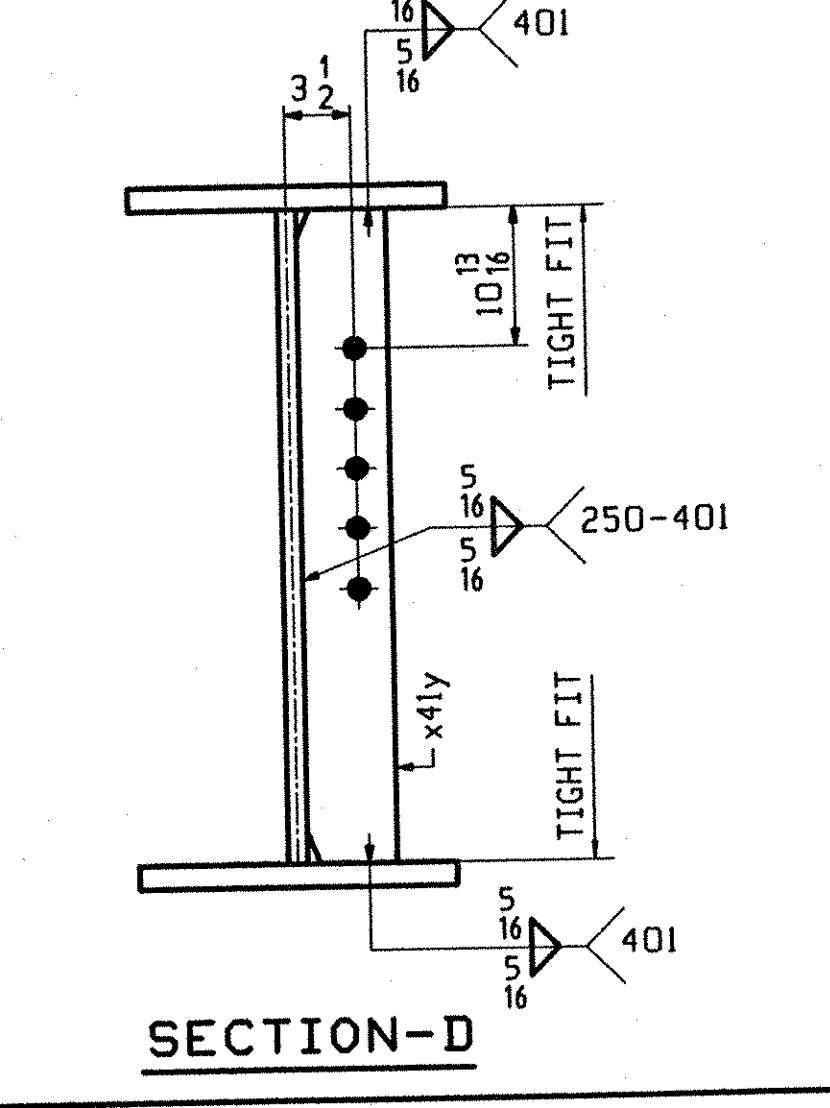
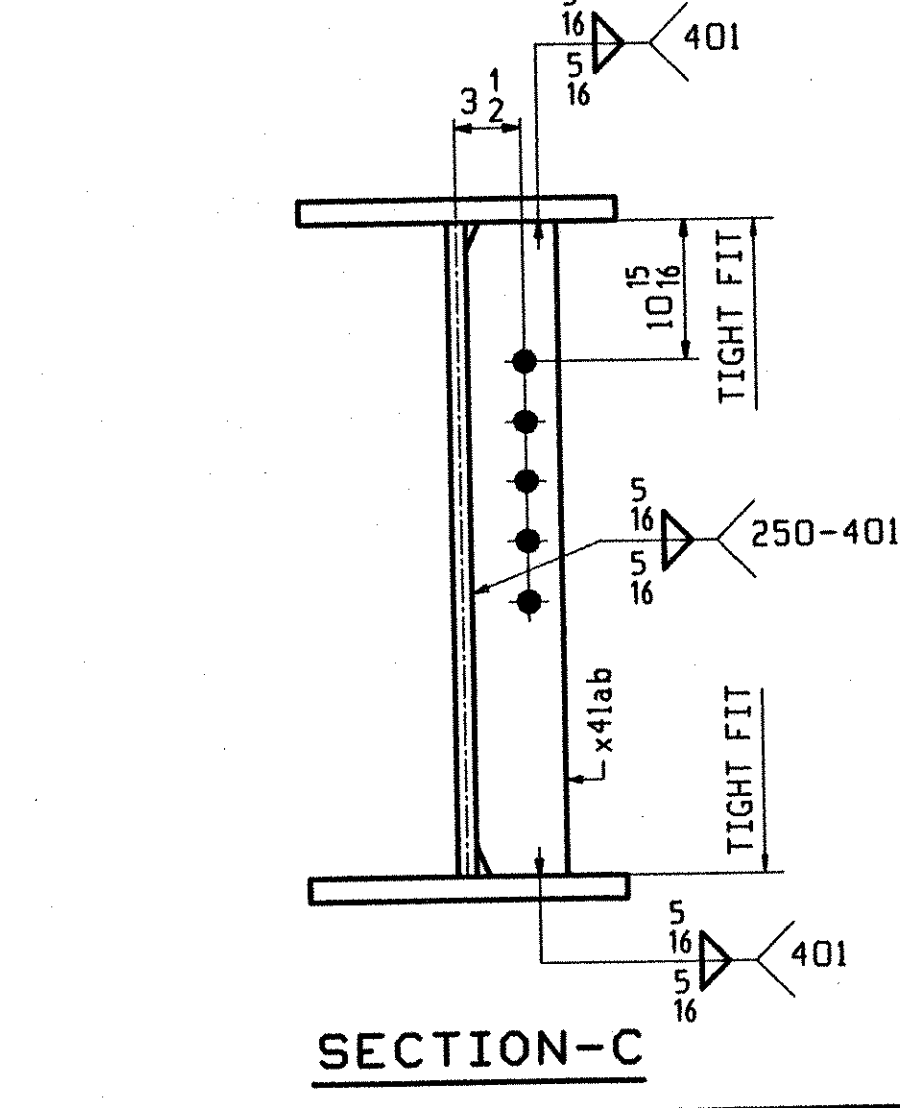
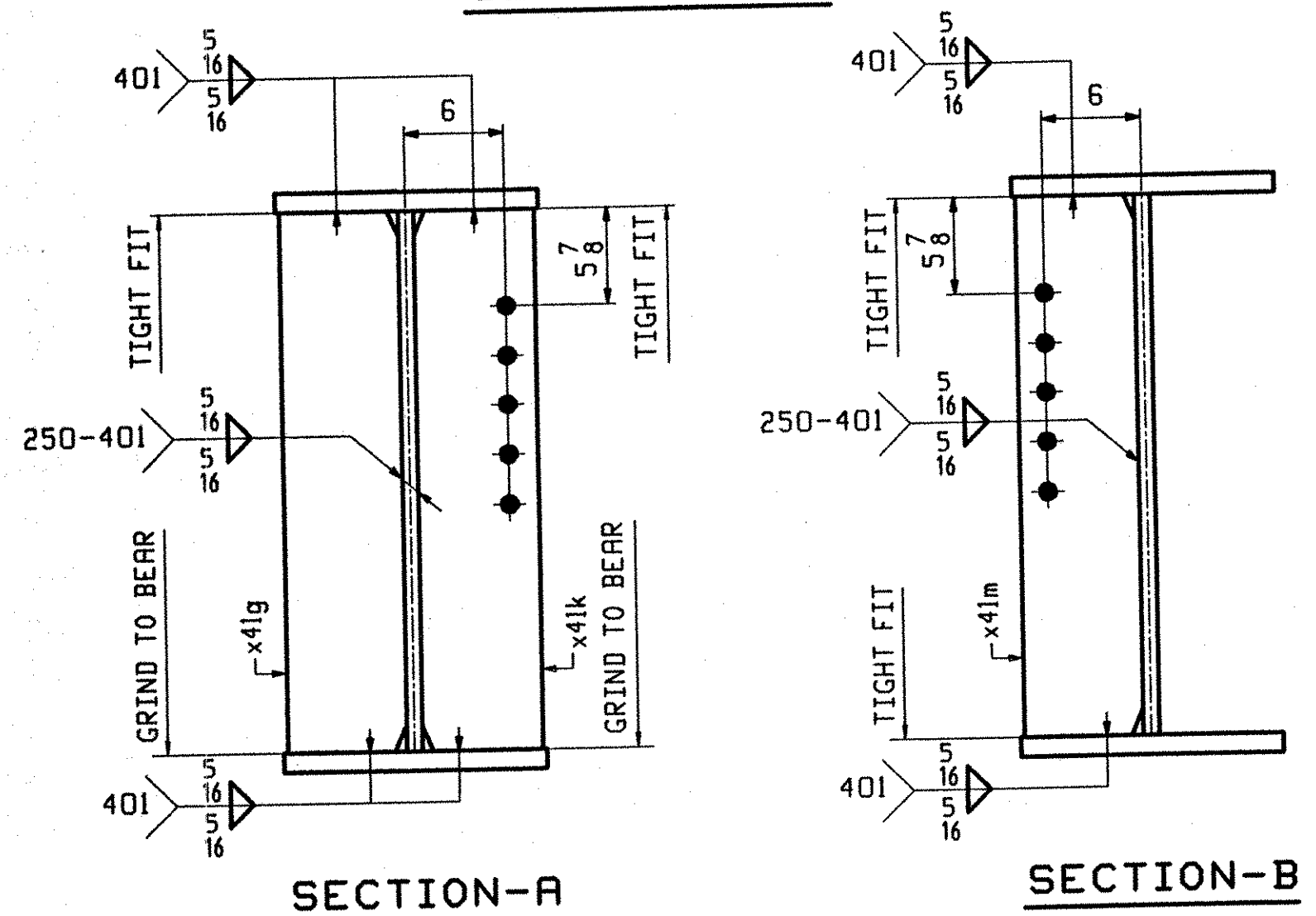
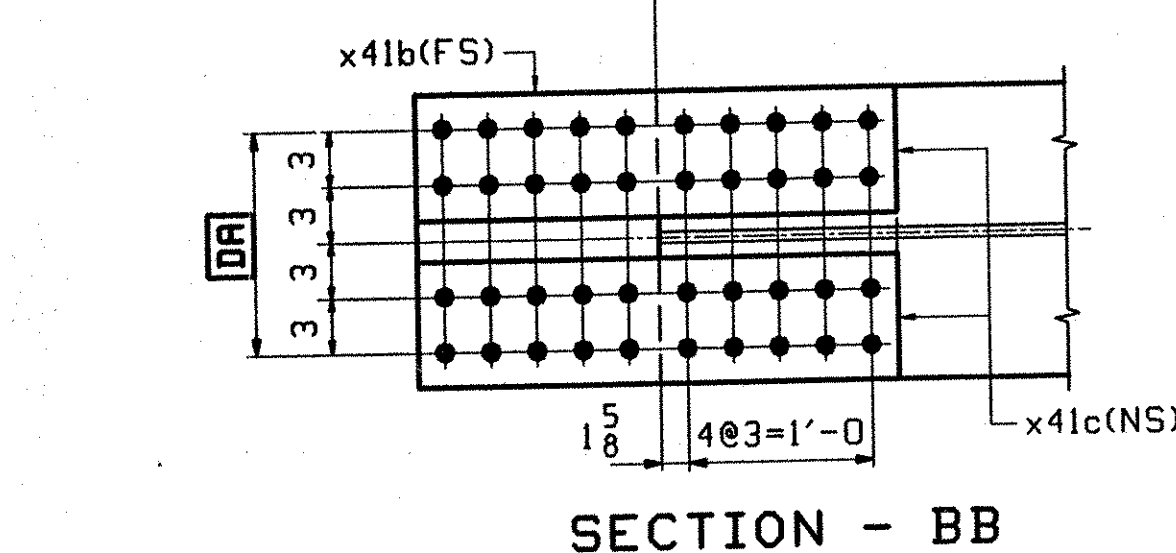
ONE - GIRDER - G4E

1. FOR GIRDER STANDARD DETAILS SEE DRAWING X41.
2. FOR CAMBER AND FLANGE DIAGRAMS SEE DRAWING C401.
3. FOR HORIZONTAL CURVING DIAGRAM SEE DRAWING HC401.
4. FOR GENERAL NOTES SEE DRAWING GN301.

TVGA
Engineering, Surveying, P.C.

NO EXCEPTIONS TAKEN REJECTED
 FURNISH AS CORRECTED
 REVISE AND RESUBMIT

ENGINEER has reviewed Shop Drawings and Samples and other data which Contractor is required to submit, only for performance with the information given in the Contract Documents and compliance with the design concept of the completed Project as a functioning whole as indicated in the Contract Documents. Such reviews do not extend to means, methods, techniques, sequences or procedures of construction or to safety precautions and programs incident thereto. Contractor is responsible for determining to be confirmed and complied at the job site for information that pertains solely to the fabrication processes or to techniques of construction; and for coordination of the work of all trades.



OUT FOR APPROVAL	10-13-01										
OUT FOR APPROVAL											
ISSUED TO SHOP											
FIELD & OFFICE											
REV. REMARKS	DATE	DWN	CHK	APP	Q.A.	NO.	DIA.	LGT	TYPE	WASHER	
MATERIAL: M270 GR. 50W (UN)	ELECTRODES:										
						15/16 φ (U.N.)				7/8 φ (U.N.)	
SURFACE PREP. & PAINT: - STEEL WITHIN 10'-0" OF ABUT. 2 SHALL BE PAINTED (SEE GN301) - ALL OTHER STEEL SHALL BE BLAST CLEANED AND LEFT UNPAINTED.											
DESCRIPTION: GIRDER - G4E										DRAWN BY	DATE
JOB: I-89 NB OVER LITTLE RIVER I-89 IMPROVEMENTS BETWEEN TOWNS OF MIDDLESEX & BOLTON COUNTY OF WASHINGTON VERMONT										BW	08/04
PROJ NO. IM-089-2(26)										ELC	9/13/01
CUSTOMER: VERMONT AGENCY OF TRANSPORTATION										APPROV BY	
CASCO BAY STEEL STRUCTURES, INC.										W. J. GATTI	
75 SPRING HILL ROAD SACO, MAINE 04072										JOB NO.	DRG. NO.
PHONE (207) 282-7360 FAX. (207) 282-1179										119-48N	424
										REV.	△