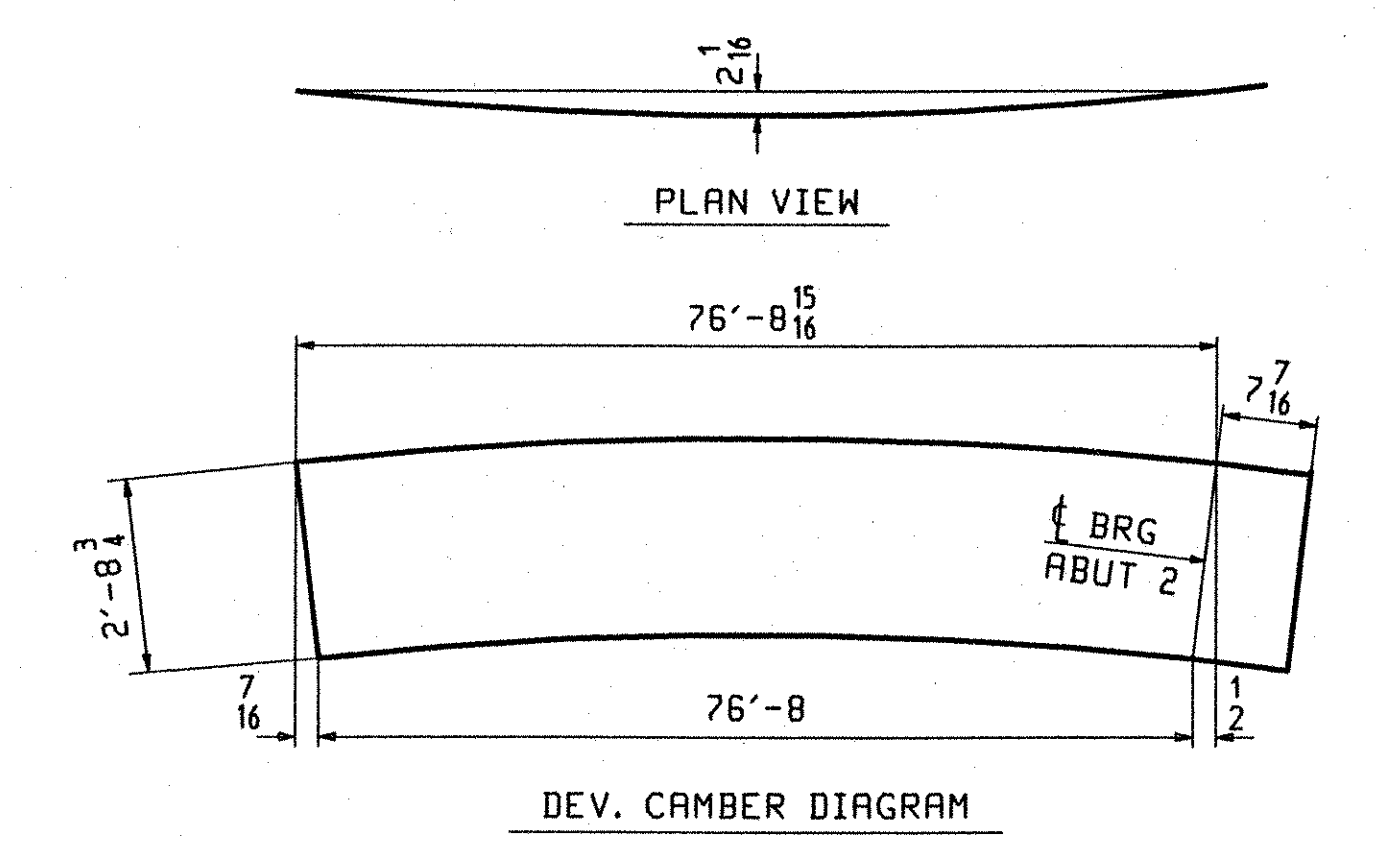
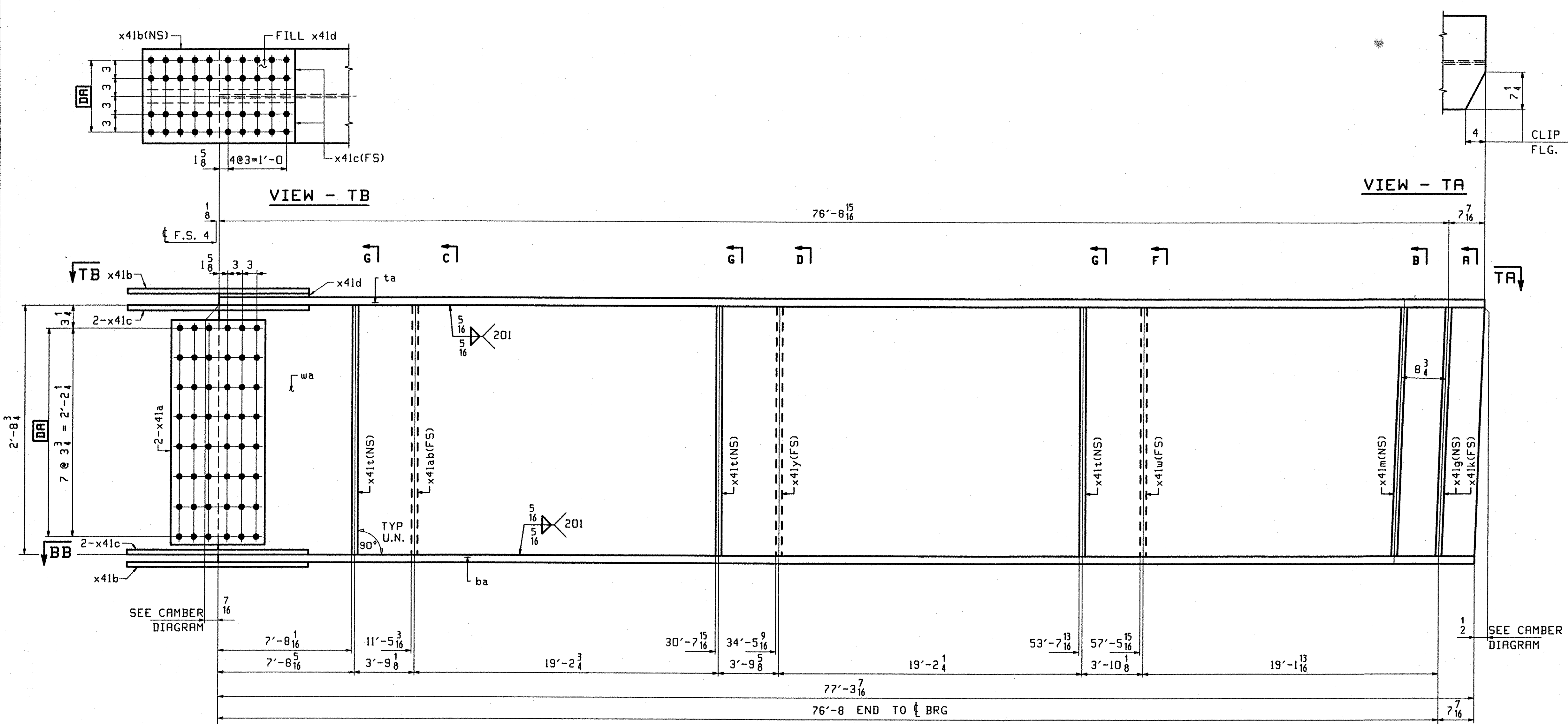


ABM INFO		SHIP	BILL OF MATERIAL				JOB NO.	DRAWING NO.	REV.
PAGE	LINE	MARK	QTY	MARK	MATERIAL	LENGTH FT INCHES	REMARKS	HT	PROCUREMENT NOTES
		G3E	1		GIRDER			16190	
401	L		1	wa	PL 2x36 <sup>7</sup> / <sub>16</sub>	77 4 <sup>3</sup> / <sub>8</sub>	(H270-50WT2) (H2-3)		
401	G		1	ta	PL 7 <sup>3</sup> / <sub>8</sub> x16	77 4 <sup>3</sup> / <sub>8</sub>	(H270-50WT2) (H2-3)		
401	A		1	ba	PL 1 <sup>5</sup> / <sub>8</sub> x16	77 3 <sup>1</sup> / <sub>8</sub>	(H270-50WT2) (H2-3)		
402	B		2	x41a	PL 1 <sup>1</sup> / <sub>2</sub> x29 <sup>3</sup> / <sub>4</sub>	1 7	(H270-50WT2) (H2-3)		
402	C		2	x41b	PL 7 <sup>3</sup> / <sub>8</sub> x16	2 7	(H270-50WT2) (H2-3)		
402	D		4	x41c	PL 3 <sup>3</sup> / <sub>8</sub> x7	2 7	(H270-50WT2) (H2-3)		
402	F		1	x41d	PL 3 <sup>3</sup> / <sub>8</sub> x16	1 3 <sup>3</sup> / <sub>8</sub>	FILL		
402	M		3	x41t	PL 1 <sup>1</sup> / <sub>2</sub> x5	2 8 <sup>3</sup> / <sub>4</sub>			
402	M		1	x41ab	PL 1 <sup>1</sup> / <sub>2</sub> x5	2 8 <sup>3</sup> / <sub>4</sub>			
402	M		1	x41y	PL 1 <sup>1</sup> / <sub>2</sub> x5	2 8 <sup>3</sup> / <sub>4</sub>			
402	M		1	x41w	PL 1 <sup>1</sup> / <sub>2</sub> x5	2 8 <sup>3</sup> / <sub>4</sub>			
402	K		1	x41g	PL 7 <sup>3</sup> / <sub>8</sub> x7 <sup>3</sup> / <sub>4</sub>	2 8 <sup>3</sup> / <sub>4</sub>			
402	K		1	x41m	PL 7 <sup>3</sup> / <sub>8</sub> x7 <sup>3</sup> / <sub>4</sub>	2 8 <sup>3</sup> / <sub>4</sub>			
402	K		1	x41k	PL 7 <sup>3</sup> / <sub>8</sub> x7 <sup>3</sup> / <sub>4</sub>	2 8 <sup>3</sup> / <sub>4</sub>			

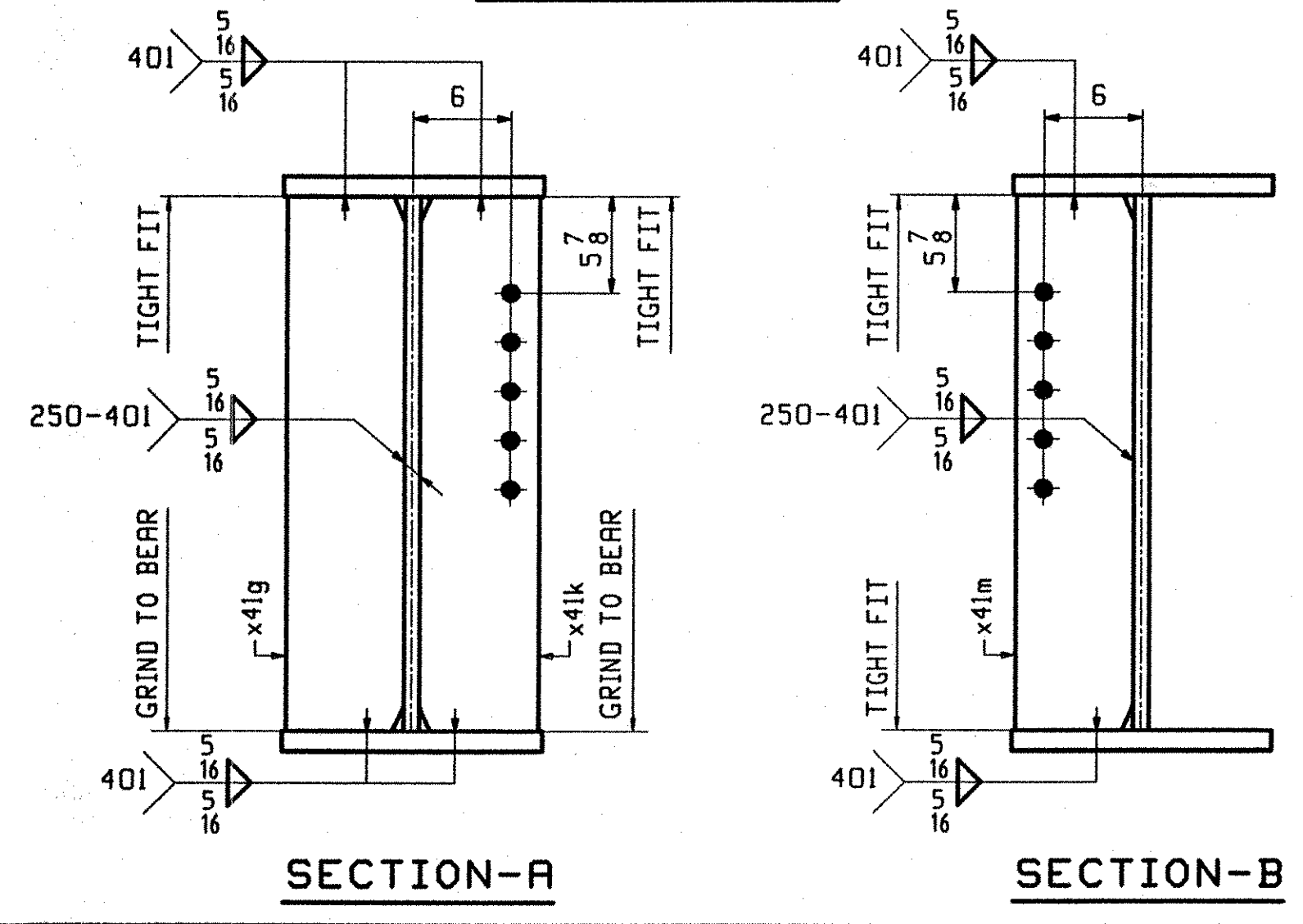
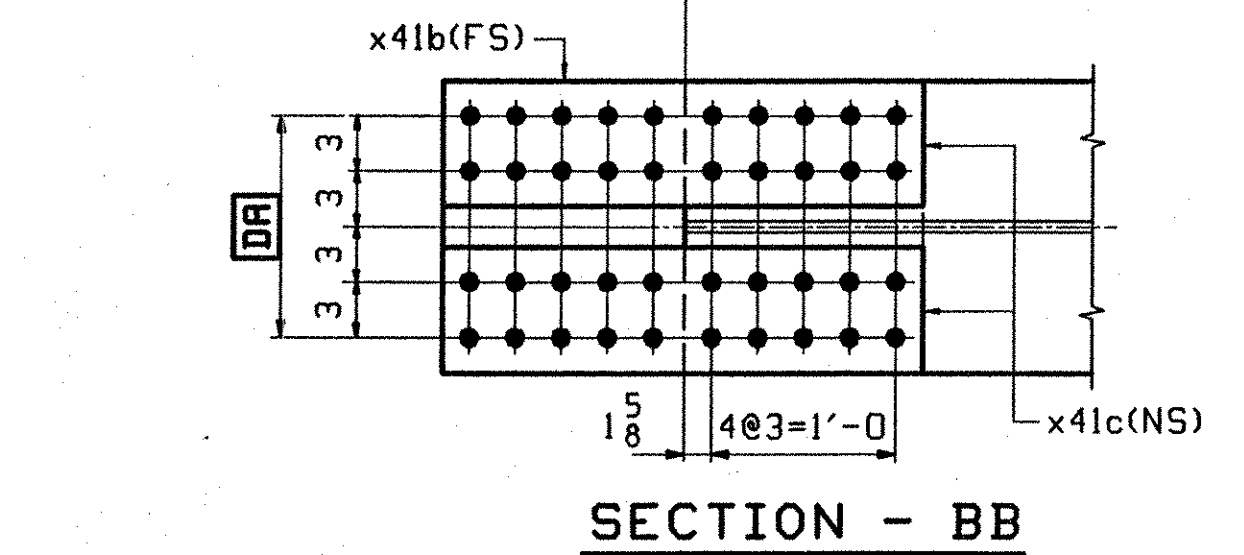


**ONE - GIRDER - G3E**

1. FOR GIRDER STANDARD DETAILS SEE DRAWING X41.
2. FOR CAMBER AND FLANGE DIAGRAMS SEE DRAWING C401.
3. FOR HORIZONTAL CURVING DIAGRAM SEE DRAWING HC401.
4. FOR GENERAL NOTES SEE DRAWING GN301.

TVGA  
Engineering, Surveying, P.C.

NO EXCEPTIONS TAKEN  REJECTED  
 FURNISH AS CORRECTED  
 REVISE AND RESUBMIT  
 ENGINEER has reviewed Shop Drawings and Samples and other data which Contractor is required to submit, only for conformance with the information given in the Contract Documents and compatibility with the design concept of the completed Project as a functioning whole as indicated in the Contract Documents. Such review is not intended to ensure, method, techniques, sequences or procedures of construction or to safety precautions and programs incident thereto. Contractor is responsible for dimensions to be confirmed and correlated at the job site; for information that pertains solely to the fabrication processes or to techniques of construction; and for coordination of the work of all trades.



OUT FOR APPROVAL	0-03/01										
OUT FOR APPROVAL											
ISSUED TO SHOP											
FIELD & OFFICE											
REV.	REMARKS	DATE	DWN	CHK	APP	Q.A.	NO.	DIA.	LGT	TYPE	WASHER
	MATERIAL: M270 GR. 50W (UN)										
	ELECTRODES:										
	HOLES: 15/16 Ø (U.N.)										
	SHOP BOLTS: 7/8 Ø (U.N.)										
	SURFACE PREP. & PAINT: - STEEL WITHIN 10'-0" OF ABUT. 2 SHALL BE PAINTED (SEE GN301) - ALL OTHER STEEL SHALL BE BLAST CLEANED AND LEFT UNPAINTED.										
DESCRIPTION:	GIRDER - G3E								DRAWN BY	DATE	
JOB:	I-89 NB OVER LITTLE RIVER I-89 IMPROVEMENTS BETWEEN TOWNS OF MIDDLESEX & BOLTON COUNTY OF WASHINGTON VERMONT								BW	08/03	
									CHKD BY		
									ELC	9/13/01	
									APPROV BY		
									SUPERVISOR	W. J. GATTI	
PROJ NO.	IM-089-2(26)										
CUSTOMER:	VERMONT AGENCY OF TRANSPORTATION										
	<b>CASCO BAY STEEL STRUCTURES, INC.</b>								JOB NO.	DRG. NO.	
	75 SPRING HILL ROAD SACO, MAINE 04072								119-48N	423	
	PHONE (207) 282-7360 FAX. (207) 282-1179								REV.	△	