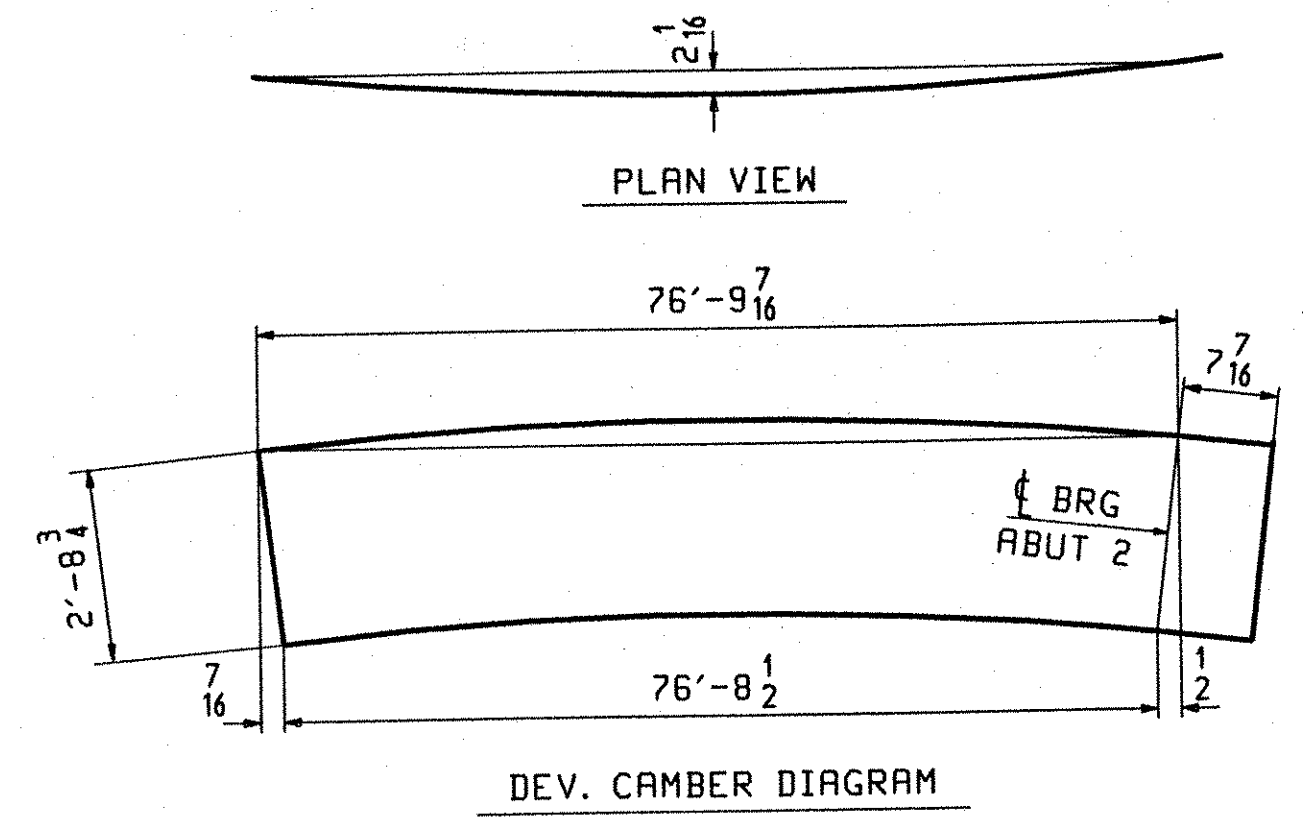
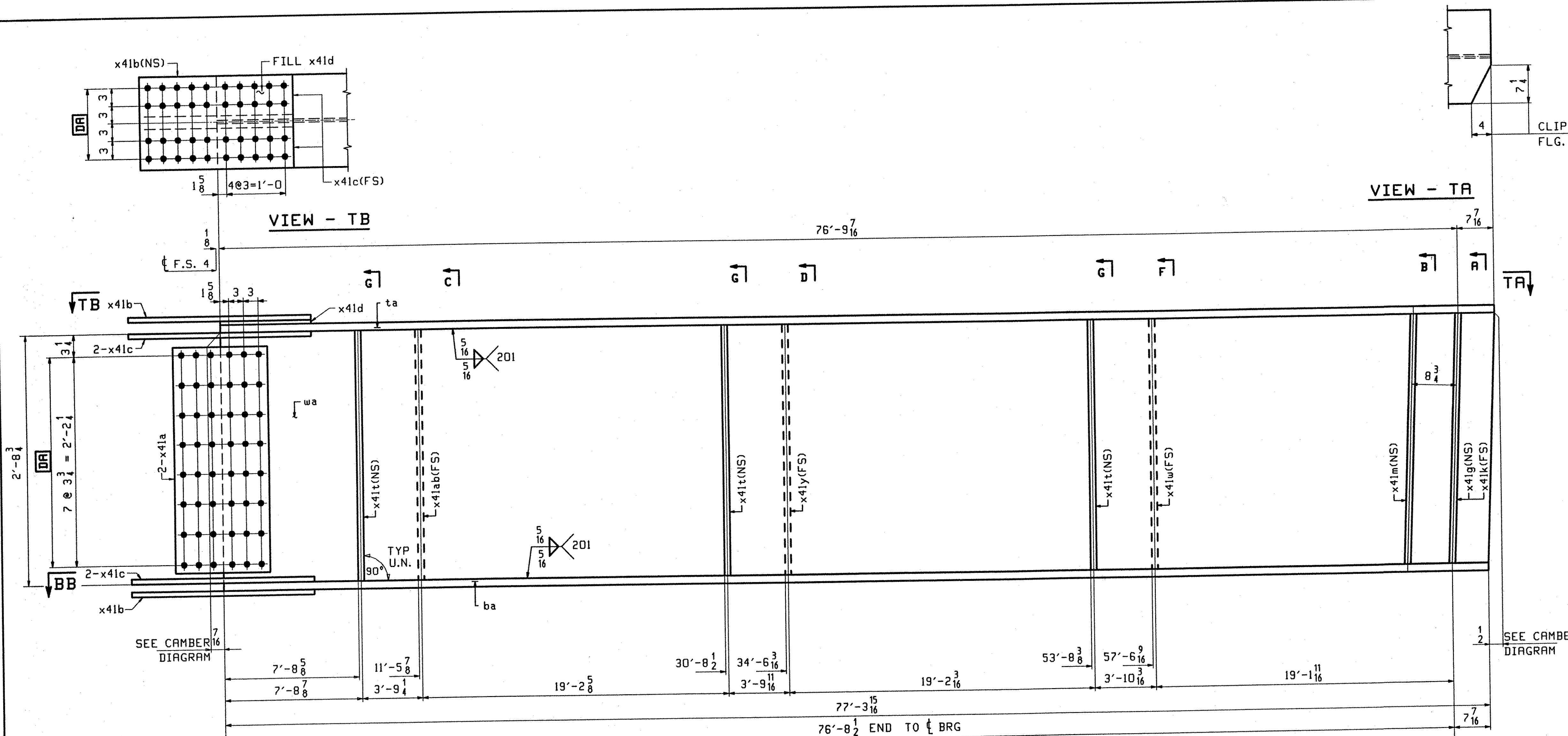


| JOB NO. | | DRAWING NO. | | REV. | | | |
|---------|------|-------------|-------|-----------------|---------------------|-------|-------------------|
| 422 | | 422 | | 422 | | | |
| ITEM | MARK | QTY | MARK | MATERIAL | REMARKS | WT | PROCUREMENT NOTES |
| | G2E | 1 | | GIRDER | | 16198 | |
| 401 | L | 1 | wa | PL 1/2 x 36 1/4 | (A270-50WT2) (H2-3) | | |
| 401 | G | 1 | ta | PL 7/8 x 16 | (A270-50WT2) (H2-3) | | |
| 401 | A | 1 | ba | PL 5/8 x 16 | (A270-50WT2) (H2-3) | | |
| 402 | B | 2 | x41a | PL 1/2 x 29 1/4 | (A270-50WT2) (H2-3) | | |
| 402 | C | 2 | x41b | PL 5/8 x 16 | (A270-50WT2) (H2-3) | | |
| 402 | D | 4 | x41c | PL 5/8 x 7 | (A270-50WT2) (H2-3) | | |
| 402 | F | 1 | x41d | PL 3/4 x 16 | FILL | | |
| 402 | M | 3 | x41t | PL 1/2 x 5 | | | |
| 402 | M | 1 | x41ab | PL 1/2 x 5 | | | |
| 402 | M | 1 | x41y | PL 1/2 x 5 | | | |
| 402 | M | 1 | x41w | PL 1/2 x 5 | | | |
| 402 | K | 1 | x41g | PL 3/8 x 7 1/4 | | | |
| 402 | K | 1 | x41m | PL 3/8 x 7 1/4 | | | |
| 402 | K | 1 | x41k | PL 3/8 x 7 1/4 | | | |



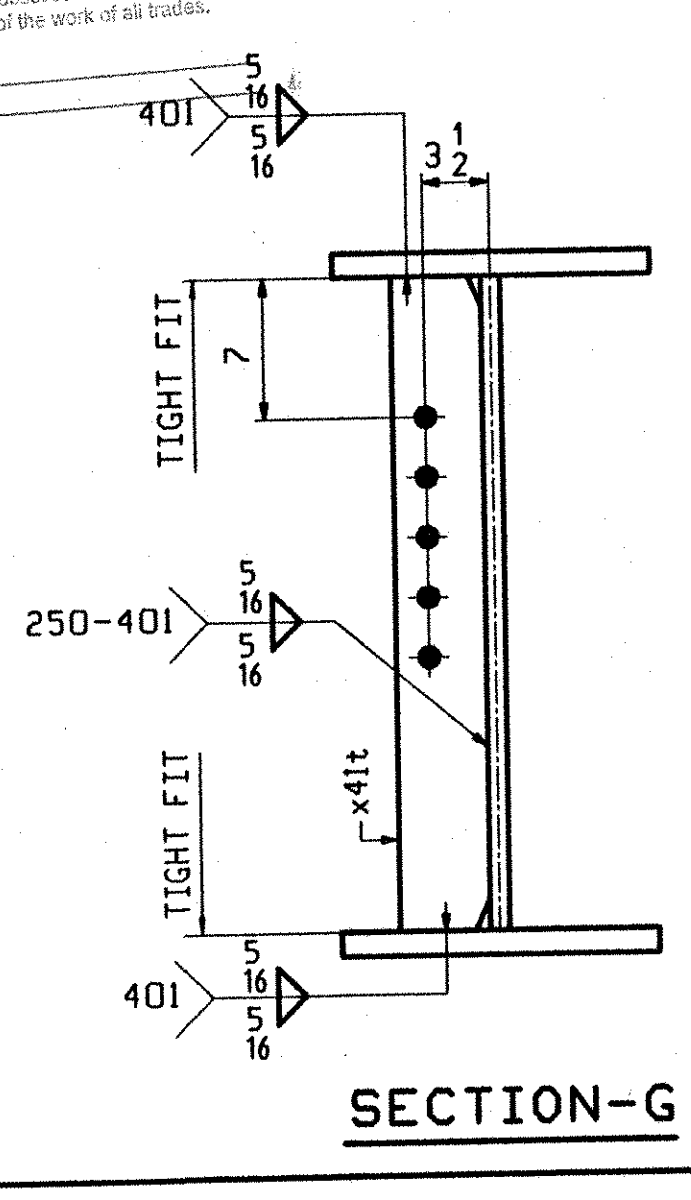
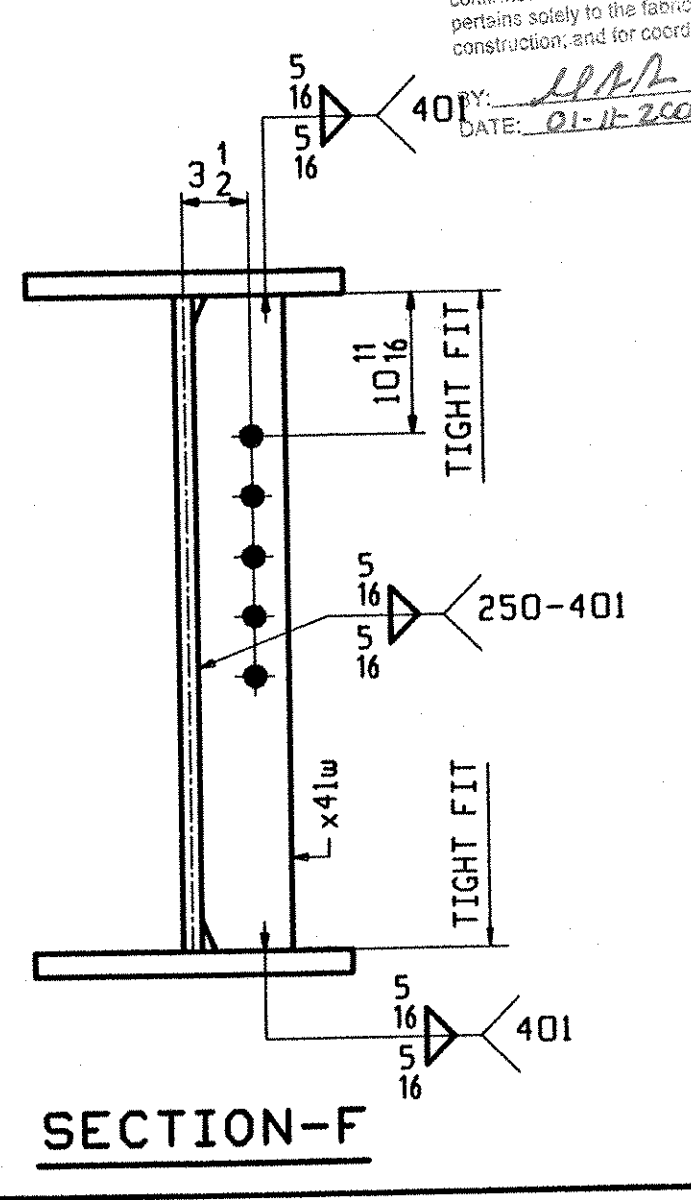
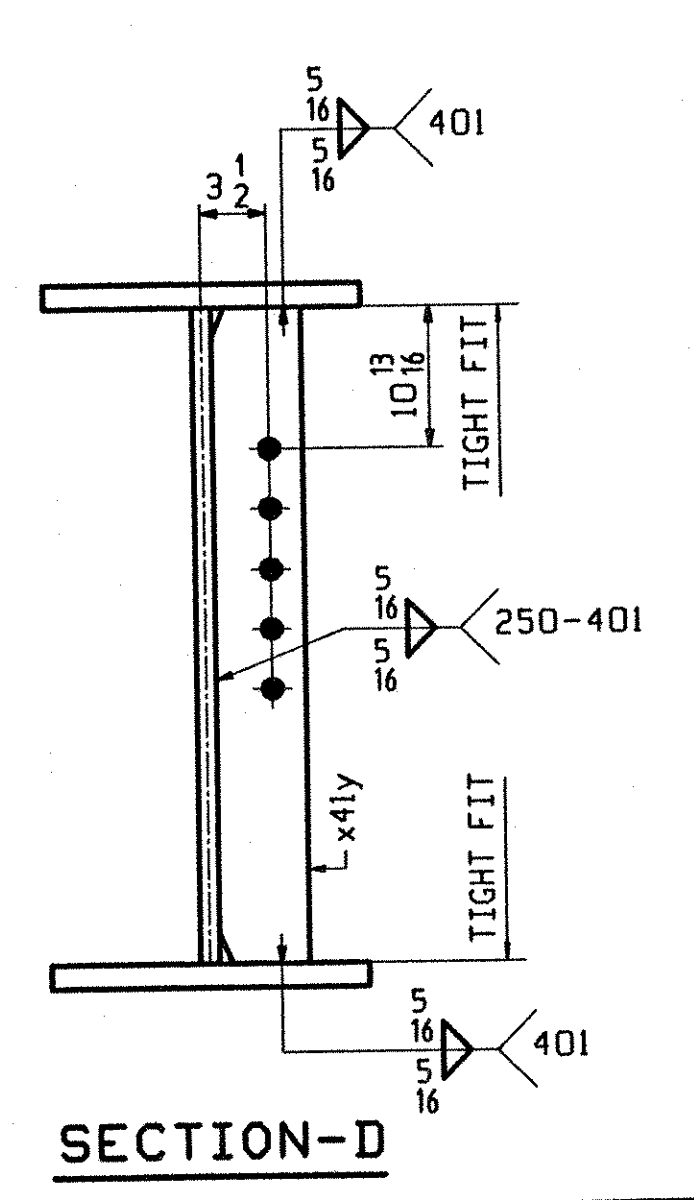
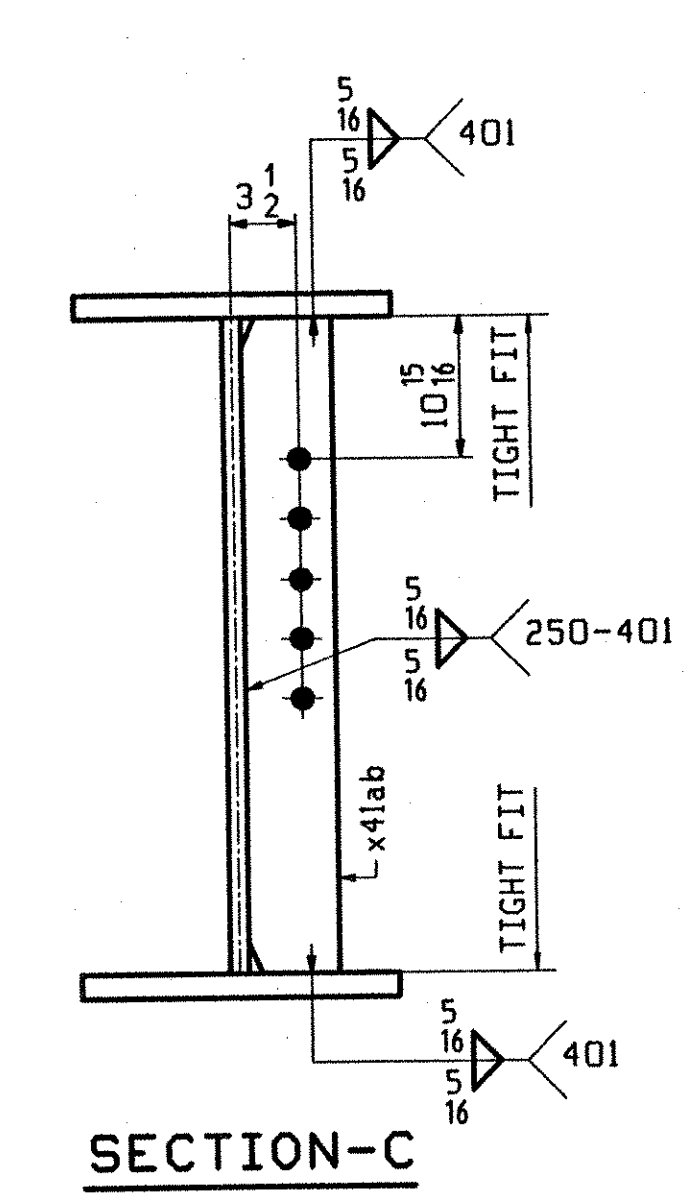
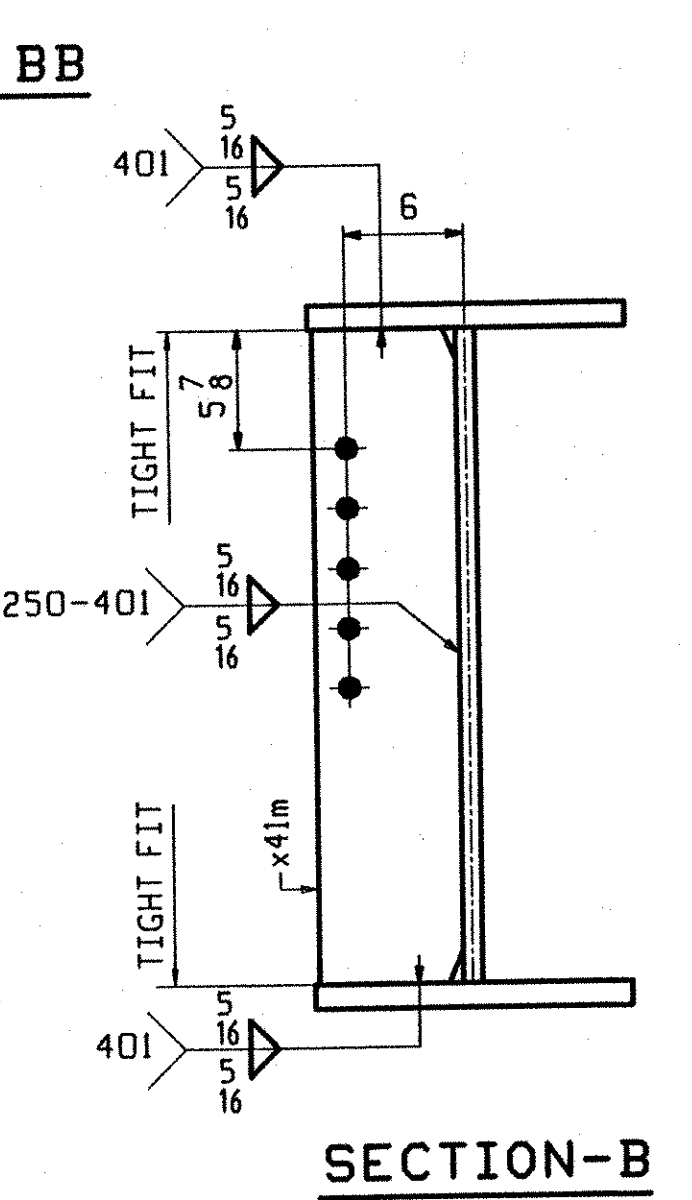
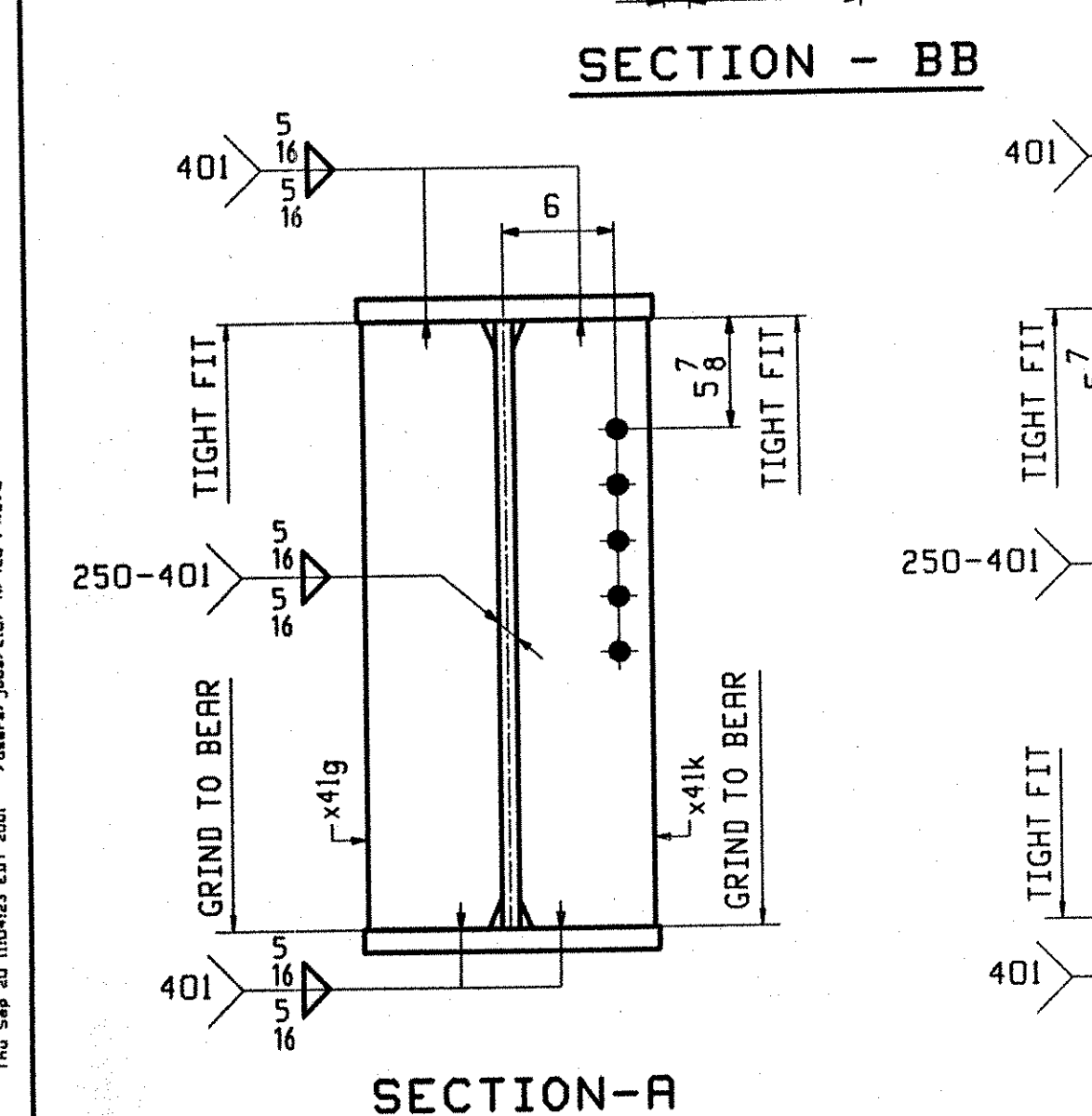
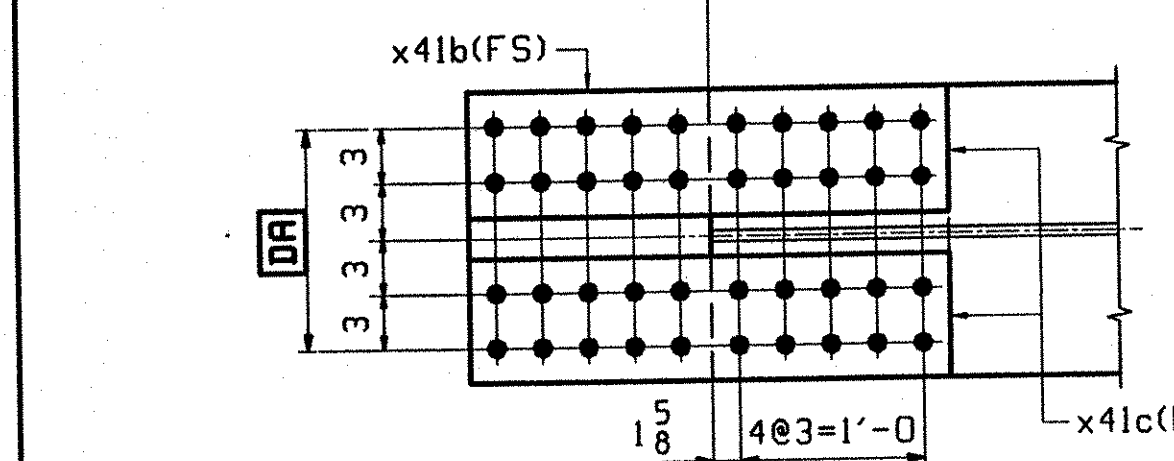
ONE - GIRDER - G2E

1. FOR GIRDER STANDARD DETAILS SEE DRAWING X41.
2. FOR CAMBER AND FLANGE DIAGRAMS SEE DRAWING C401.
3. FOR HORIZONTAL CURVING DIAGRAM SEE DRAWING HC401.
4. FOR GENERAL NOTES SEE DRAWING GN301.

TVGA
Engineering, Surveying, P.C.

NO EXCEPTIONS TAKEN REJECTED
 FURNISH AS CORRECTED
 REVISE AND RESUBMIT

ENGINEER HAS REVIEWED SHOP DRAWINGS AND SAMPLES AND OTHER DATA WHICH CONTRACTOR IS REQUIRED TO SUBMIT, AND FOR PERFORMANCE WITH THE INFORMATION GIVEN IN THE CONTRACT DOCUMENTS AND COMPATIBILITY WITH THE DESIGN CONCEPT OF THE CONTRACT DOCUMENTS. SUCH REVIEW DOES NOT IMPLY ANY METHOD, TECHNIQUE, EQUIPMENT OR PROCEDURES OF CONSTRUCTION OR TO SAFETY PRECAUTIONS AND PROGRAMS IMPOSED THEREON. CONTRACTOR IS RESPONSIBLE FOR DETERMINING THE CONFIRMED AND CONTROLLED AT THE JOB SITE, FOR INFORMATION THAT PERTAINS SOLELY TO THE FABRICATION PROCESS OR TO TECHNIQUES OF CONSTRUCTION, AND FOR COORDINATION OF THE WORK OF ALL TRADES.



| REV. | REMARKS | DATE | DWN | CHK | APP | Q.A. | NO. | DIA. | LGT | TYPE | WASHER |
|------|--|---------|-----|-----|-----|------|-----|------|-----|------|--------|
| | OUT FOR APPROVAL | 0-23-01 | | | | | | | | | |
| | OUT FOR APPROVAL | | | | | | | | | | |
| | ISSUED TO SHOP | | | | | | | | | | |
| | FIELD & OFFICE | | | | | | | | | | |
| | MATERIAL: M270 GR. 50W (UN) | | | | | | | | | | |
| | ELECTRODES: | | | | | | | | | | |
| | HOLES: 15/16 Ø (U.N.) | | | | | | | | | | |
| | SHOP BOLTS: 7/8 Ø (U.N.) | | | | | | | | | | |
| | SURFACE PREP. & PAINT: - STEEL WITHIN 10'-0 OF ABUT. 2 SHALL BE PAINTED (SEE GN301) - ALL OTHER STEEL SHALL BE BLAST CLEANED AND LEFT UNPAINTED. | | | | | | | | | | |
| | DESCRIPTION: GIRDER - G2E | | | | | | | | | | |
| | JOB: I-89 NB OVER LITTLE RIVER | | | | | | | | | | |
| | I-89 IMPROVEMENTS | | | | | | | | | | |
| | BETWEEN TOWNS OF MIDDLESEX & BOLTON | | | | | | | | | | |
| | COUNTY OF WASHINGTON VERMONT | | | | | | | | | | |
| | PROJ NO. IM-089-2(26) | | | | | | | | | | |
| | CUSTOMER: VERMONT AGENCY OF TRANSPORTATION | | | | | | | | | | |
| | CASCO BAY STEEL STRUCTURES, INC. | | | | | | | | | | |
| | 75 SPRING HILL ROAD | | | | | | | | | | |
| | PHONE (207) 282-7360 | | | | | | | | | | |
| | SACO, MAINE 04072 | | | | | | | | | | |
| | FAX. (207) 282-1179 | | | | | | | | | | |
| | JOB NO. 119-48N | | | | | | | | | | |
| | DRG. NO. 422 | | | | | | | | | | |
| | REV. Δ | | | | | | | | | | |

ELC The Sep 20 11:43:23 EDT 2001 /www.jan/2002-04-28 1 Rev 0