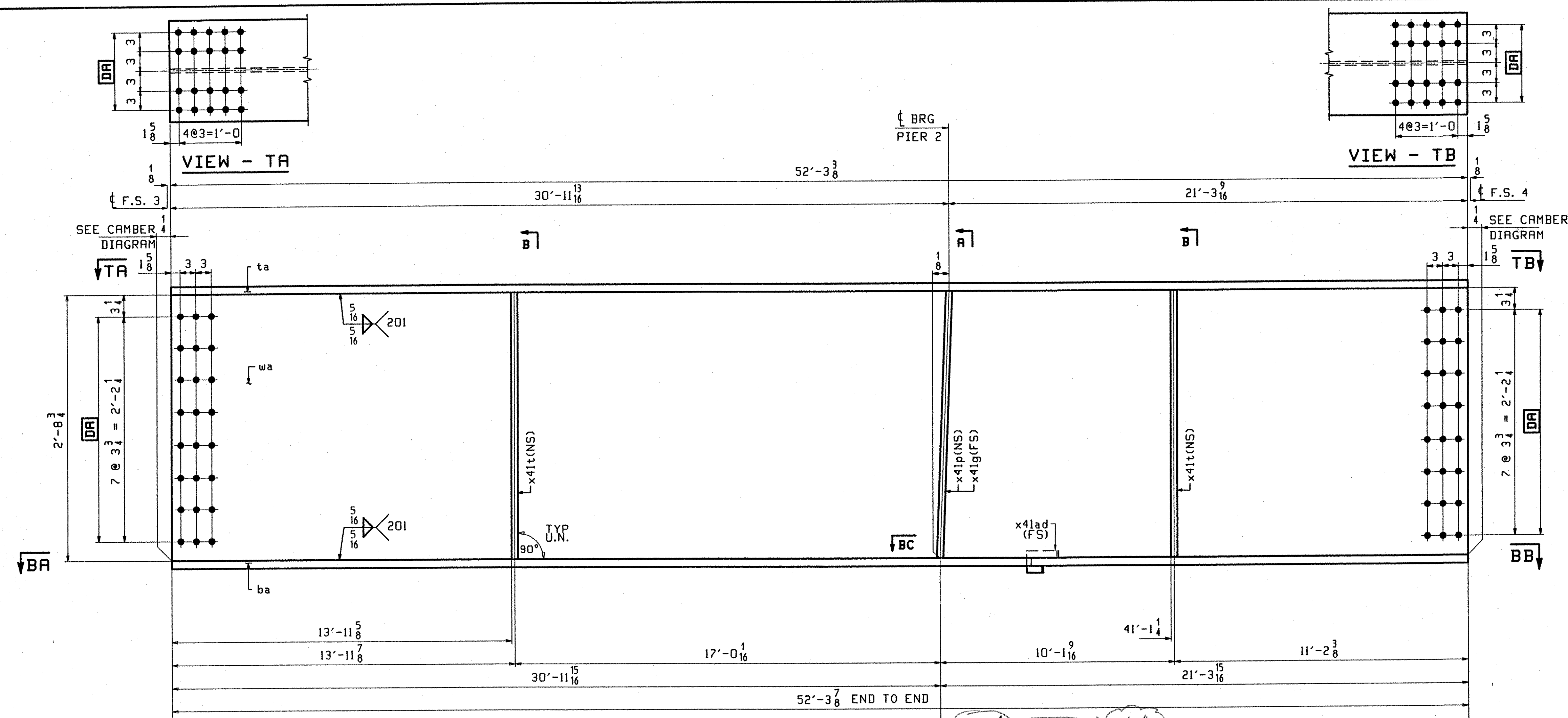
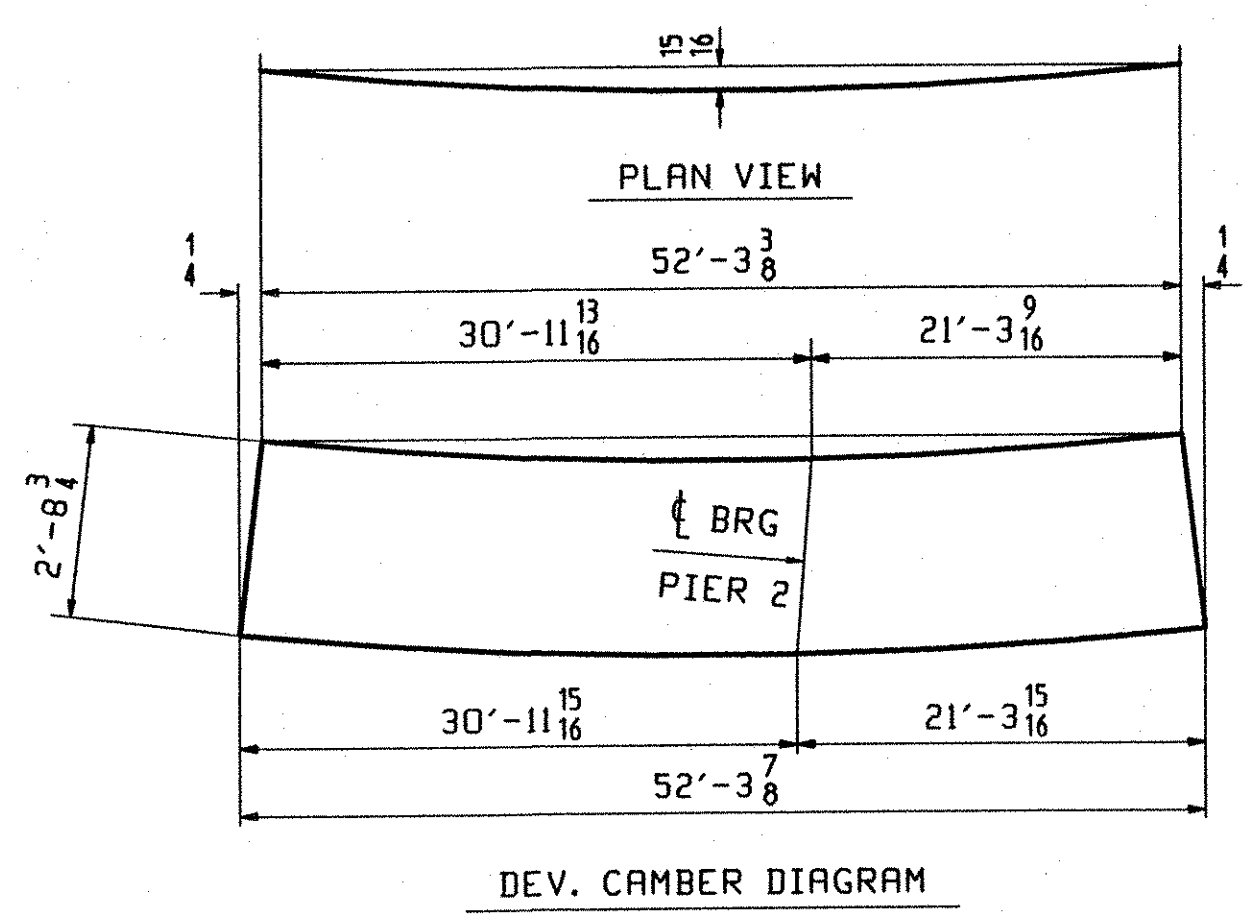
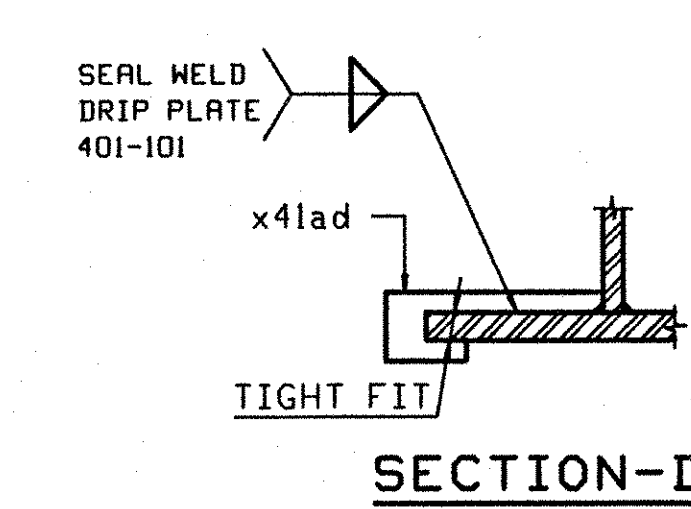
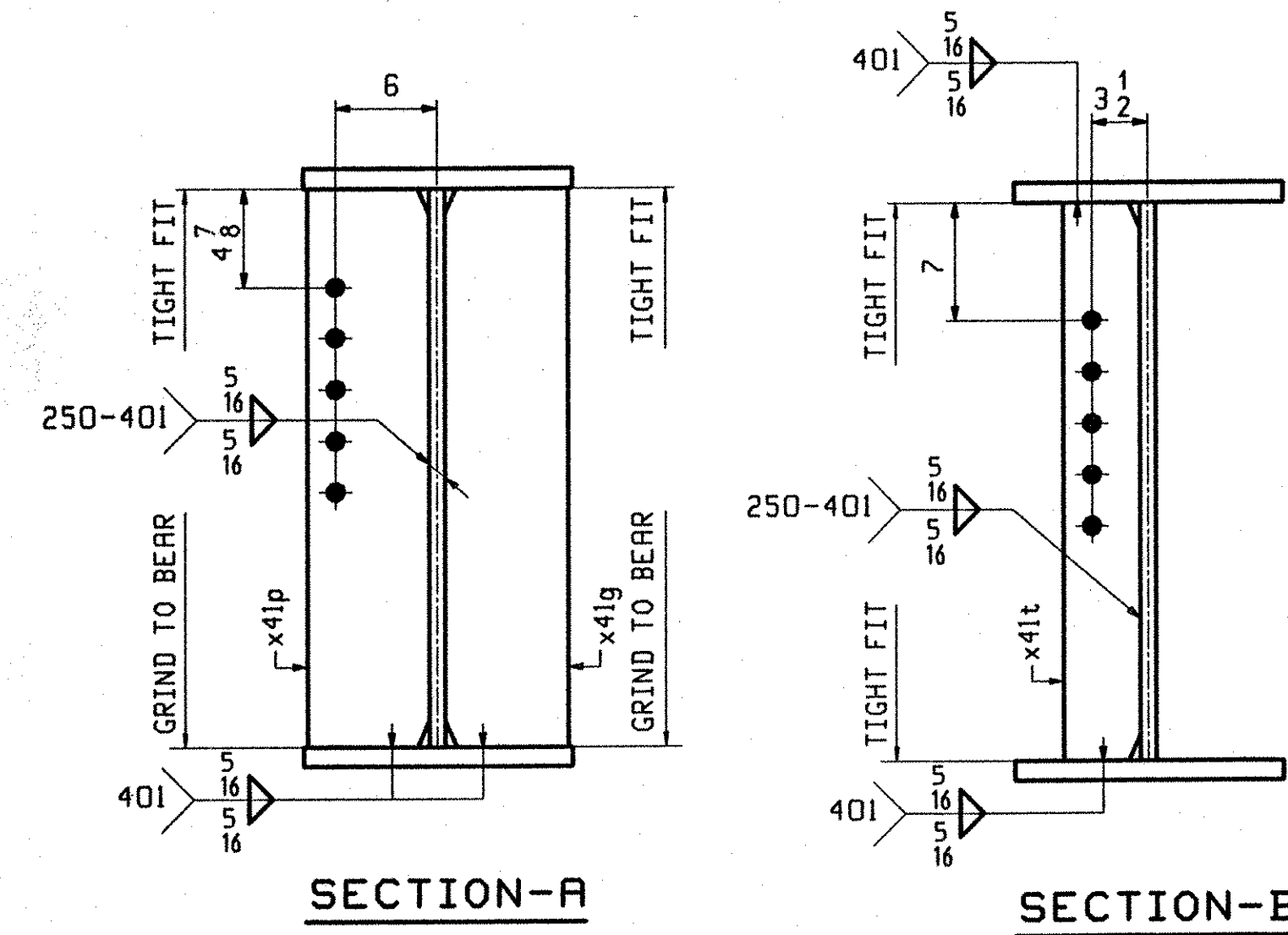
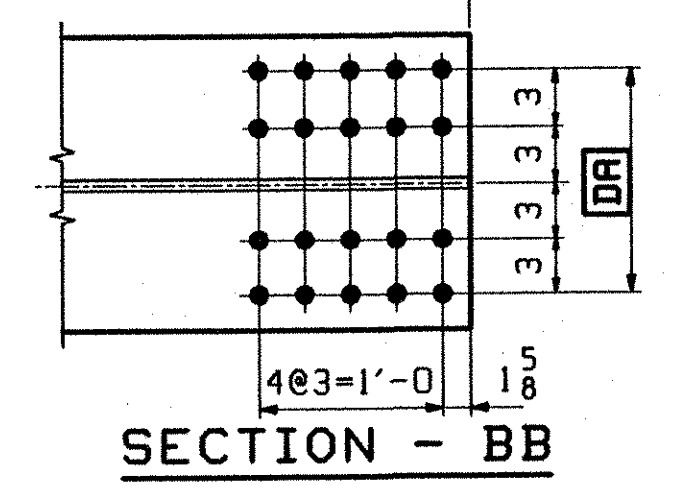
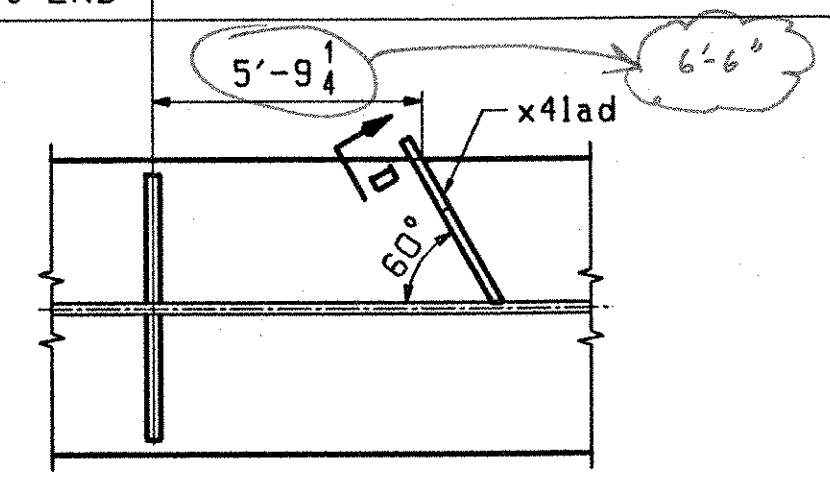


| ABM INFO |      | SHIP |     |       |                | BILL OF MATERIAL |          | JOB NO.             | DRAWING NO. | REV.              |
|----------|------|------|-----|-------|----------------|------------------|----------|---------------------|-------------|-------------------|
| PAGE     | LINE | MARK | QTY | MARK  | MATERIAL       | LENGTH FT        | INCHES   | REMARKS             | WT          | PROCUREMENT NOTES |
|          |      | GID  | 1   |       | GIRDER         |                  |          |                     | 12479       |                   |
| 401      | N    |      | 1   | wa    | PL 1/2 x 3/4   | 52               | 3 3/8    | (H270-50WT2) (H2-3) |             |                   |
| 401      | C    |      | 1   | ta    | PL 1 1/8 x 16  | 52               | 3 3/8    | (H270-50WT2) (H2-3) |             |                   |
| 401      | C    |      | 1   | ba    | PL 1 1/8 x 16  | 52               | 3 3/8    | (H270-50WT2) (H2-3) |             |                   |
| 402      | M    |      | 2   | x41t  | PL 1/2 x 5     | 2                | 8 3/4    |                     |             |                   |
| 402      | K    |      | 1   | x41p  | PL 5/8 x 7 1/2 | 2                | 8 3/4    |                     |             |                   |
| 402      | K    |      | 1   | x41g  | PL 5/8 x 7 1/2 | 2                | 8 3/4    |                     |             |                   |
| 402      | P    |      | 1   | x41ad | PL 1/4 x 3 1/2 | 0                | 10 15/16 |                     |             |                   |



- ONE - GIRDER - GID**
1. FOR GIRDER STANDARD DETAILS SEE DRAWING X41.
  2. FOR CAMBER AND FLANGE DIAGRAMS SEE DRAWING C402.
  3. FOR HORIZONTAL CURVING DIAGRAM SEE DRAWING HC401.
  4. FOR GENERAL NOTES SEE DRAWING GN301.



**TVGA**  
Engineering, Surveying, P.C.

NO EXCEPTIONS TAKEN  REJECTED  
 FURNISH AS CORRECTED  
 REVISE AND RESUBMIT

ENGINEER has reviewed Shop Drawings and Samples and other data which Contractor is required to submit, only for performance with the information given in the Contract Documents and compliance with the design concept of the completed Project as a functional whole as reflected in the Contract Documents. Such review does not extend to means, methods, techniques, sequences or procedures of construction or to safety practices and programs incident thereto. Contractor is responsible for dimensions to be confirmed and controlled at the job site; for information that pertains solely to the fabrication processes or to techniques of construction; and for coordination of the work of all trades.

BY: *[Signature]*  
DATE: 01-11-2002

|   |                   |             |     |        |                |             |              |      |     |            |                |
|---|-------------------|-------------|-----|--------|----------------|-------------|--------------|------|-----|------------|----------------|
| OUT FOR APPROVAL  | 01-23-01          |             |     |        |                |             |              |      |     |            |                |
| OUT FOR APPROVAL  |                   |             |     |        |                |             |              |      |     |            |                |
| ISSUED TO SHOP  |                   |             |     |        |                |             |              |      |     |            |                |
| FIELD & OFFICE  |                   |             |     |        |                |             |              |      |     |            |                |
| REV.  | REMARKS           | DATE        | DWN | CHK    | APP            | Q.A.        | NO.          | DIA. | LGT | TYPE       | WASHER         |
| MATERIAL:   | M270 GR. 50W (UN) | ELECTRODES: |     | HOLES: | 15/16 φ (U.N.) | SHOP BOLTS: | 7/8 φ (U.N.) |      |     |            |                |
| SURFACE PREP. & PAINT:<br>- STEEL WITHIN 10'-0" OF ABUT. 2 SHALL BE PAINTED (SEE GN301)<br>- ALL OTHER STEEL SHALL BE BLAST CLEANED AND LEFT UNPAINTED. |                   |             |     |        |                |             |              |      |     |            |                |
| DESCRIPTION: GIRDER - GID   |                   |             |     |        |                |             |              |      |     | DRAWN BY   | DATE           |
| JOB: I-89 NB OVER LITTLE RIVER  |                   |             |     |        |                |             |              |      |     | BW         | 08/02          |
| I-89 IMPROVEMENTS   |                   |             |     |        |                |             |              |      |     | CHKD BY    |                |
| BETWEEN TOWNS OF MIDDLESEX & BOLTON   |                   |             |     |        |                |             |              |      |     | ELC        | 9/12/01        |
| COUNTY OF WASHINGTON VERMONT  |                   |             |     |        |                |             |              |      |     | APPROV BY  |                |
| TENSOR 2107-N   |                   |             |     |        |                |             |              |      |     | SUPERVISOR | W. J. GATTI    |
| PROJ NO. IM-089-2(26)   |                   |             |     |        |                |             |              |      |     | Q.A.       |                |
| CUSTOMER: VERMONT AGENCY OF TRANSPORTATION  |                   |             |     |        |                |             |              |      |     |            |                |
| <b>CASCO BAY STEEL STRUCTURES, INC.</b>   |                   |             |     |        |                |             |              |      |     | JOB NO.    | DRG. NO.       |
| 75 SPRING HILL ROAD   |                   |             |     |        |                |             |              |      |     | 119-48N    | 416            |
| SACO, MAINE 04072   |                   |             |     |        |                |             |              |      |     |            |                |
| PHONE (207) 282-7360  |                   |             |     |        |                |             |              |      |     | FAX.       | (207) 282-1179 |
|   |                   |             |     |        |                |             |              |      |     | REV.       | △              |