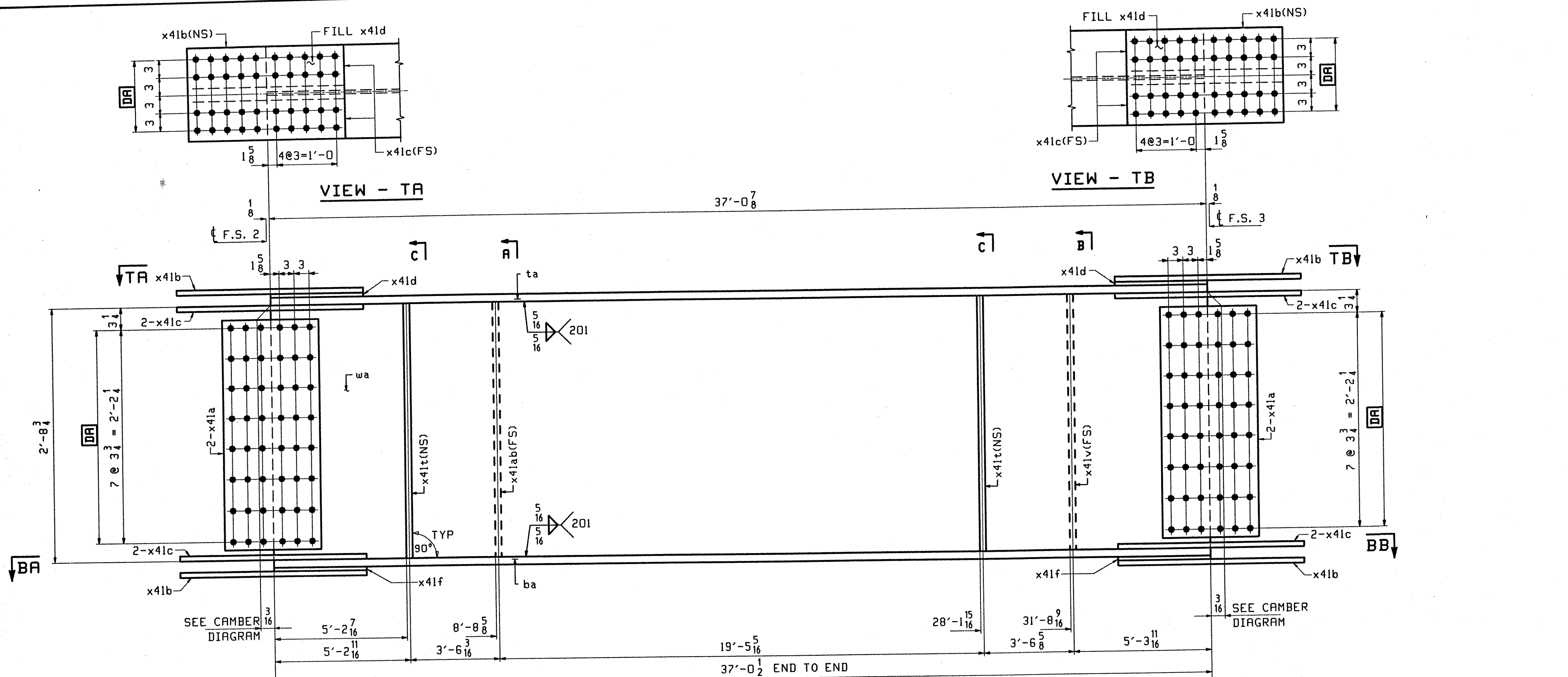
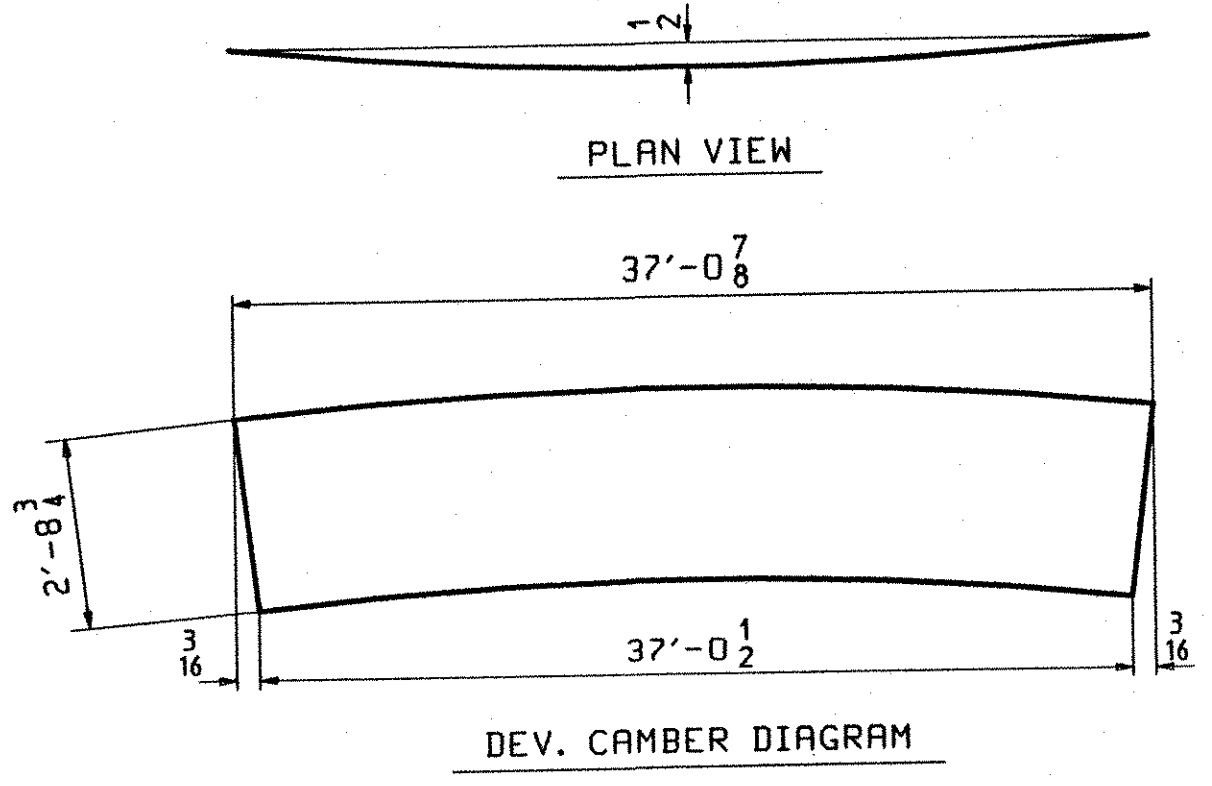
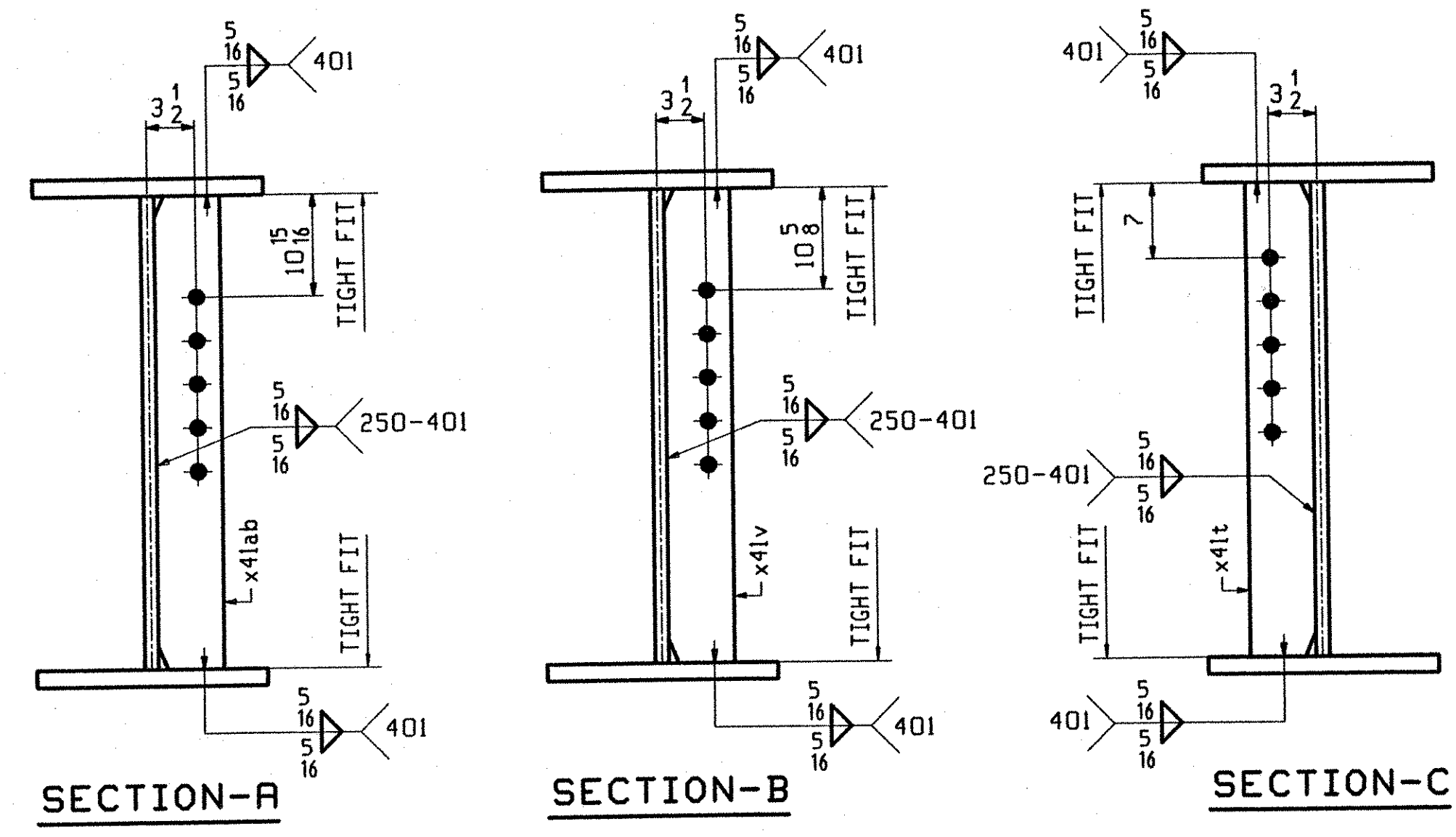
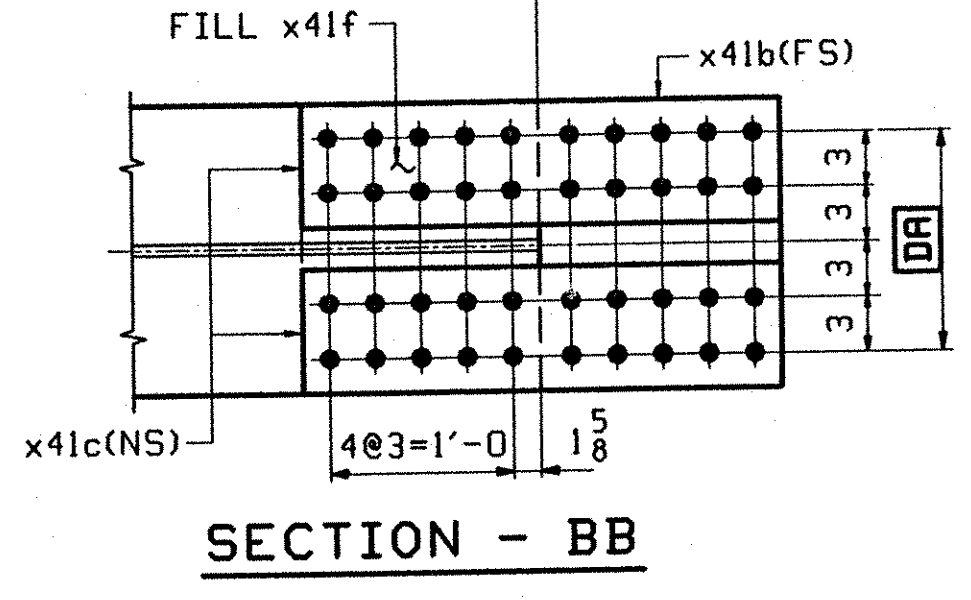
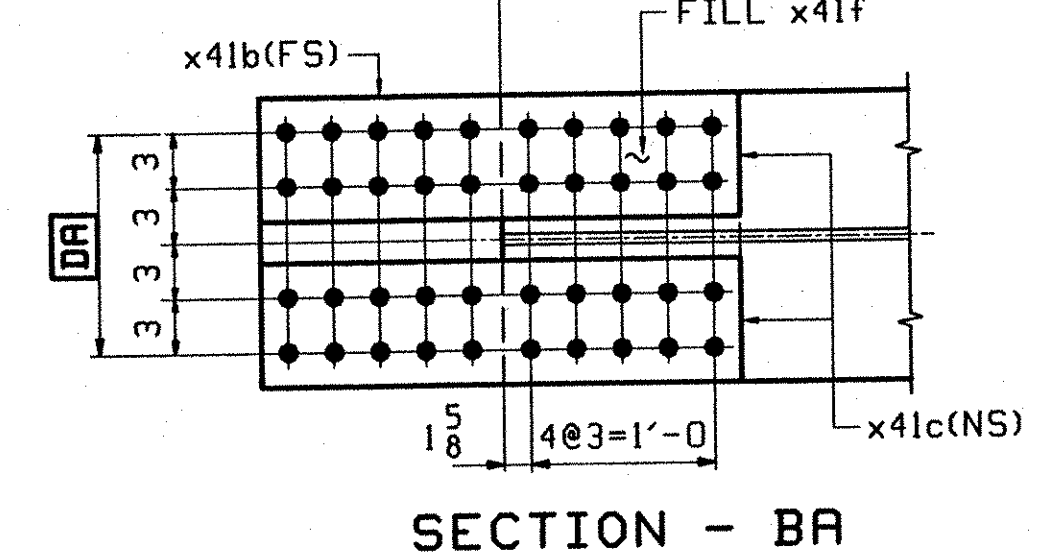


PAGE	LINE	MARK	QTY	MARK	MATERIAL	LENGTH		REMARKS	WT	PROCUREMENT NOTES
						FT	INCHES			
		G3C	1		GIRDER				7039	
401	O		1	wa	PL 1/2 x 33 7/8	37	0 7/8	(H270-50WT2) (H2-3)		
401	J		1	ta	PL 5/8 x 16	37	0 7/8	(H270-50WT2) (H2-3)		
401	E		1	ba	PL 5/8 x 16	37	0 2	(H270-50WT2) (H2-3)		
402	B		4	x41a	PL 1/2 x 29 3/4	1	7	(H270-50WT2) (H2-3)		
402	C		4	x41b	PL 5/8 x 16	2	7	(H270-50WT2) (H2-3)		
402	D		8	x41c	PL 5/8 x 7	2	7	(H270-50WT2) (H2-3)		
402	F		2	x41d	PL 3/4 x 16	1	3 3/8	FILL		
402	G		2	x41f	PL 1 1/4 x 16	1	3 3/8	FILL		
402	M		2	x41t	PL 1/2 x 5	2	8 3/4			
402	M		1	x41ab	PL 1/2 x 5	2	8 3/4			
402	M		1	x41v	PL 1/2 x 5	2	8 3/4			



ONE - GIRDER - G3C

1. FOR GIRDER STANDARD DETAILS SEE DRAWING X41.
2. FOR CAMBER AND FLANGE DIAGRAMS SEE DRAWING C403.
3. FOR HORIZONTAL CURVING DIAGRAM SEE DRAWING HC401.
4. FOR GENERAL NOTES SEE DRAWING GN301.



TVGA
Engineering, Surveying, P.C.

NO EXCEPTIONS TAKEN REJECTED
 FURNISH AS CORRECTED
 REVISE AND RESUBMIT

ENGINEER has reviewed Shop Drawings and Samples and other data which Contractor is required to submit, only for conformance with the information given in the Contract Documents and compliance with the design concept of the completed Project as a functioning whole as indicated in the Contract Documents. Such reviews do not extend to means, methods, techniques, sequences or procedures of construction or to safety precautions and programs incident thereto. Contractor is responsible for dimensions to be confirmed and controlled at the job site; for information that pertains solely to the fabrication processes or to techniques of construction; and for coordination of the work of all trades.

BY: *[Signature]*
DATE: 01-11-2002

OUT FOR APPROVAL	0-03-01									
OUT FOR APPROVAL										
ISSUED TO SHOP										
FIELD & OFFICE										

REV.	REMARKS	DATE	DMN	CHK	APP	Q.A.	NO.	DIA.	LGT	TYPE	WASHER
	MATERIAL: M270 GR. 50W (UN)										
	ELECTRODES:										
	HOLES:										
							15/16 Ø (U.N.)				7/8 Ø (U.N.)
	SURFACE PREP. & PAINT: - STEEL WITHIN 10'-0 OF ABUT. 2 SHALL BE PAINTED (SEE GN301) - ALL OTHER STEEL SHALL BE BLAST CLEANED AND LEFT UNPAINTED.										
DESCRIPTION: GIRDER - G3C		DRAWN BY: BW		DATE: 08/02							
JOB: I-89 NB OVER LITTLE RIVER		CHKD BY: ELC		9/12/01							
I-89 IMPROVEMENTS		APPROV BY: W. J. GATTI		SUPERVISOR							
BETWEEN TOWNS OF MIDDLESEX & BOLTON											
COUNTY OF WASHINGTON VERMONT											
PROJ NO. IM-089-2(26)											
CUSTOMER: VERMONT AGENCY OF TRANSPORTATION											
CASCO BAY STEEL STRUCTURES, INC.		JOB NO. 119-48N		DRG. NO. 413							
75 SPRING HILL ROAD SACO, MAINE 04072											
PHONE (207) 282-7360 FAX. (207) 282-1179										REV. <input type="checkbox"/>	