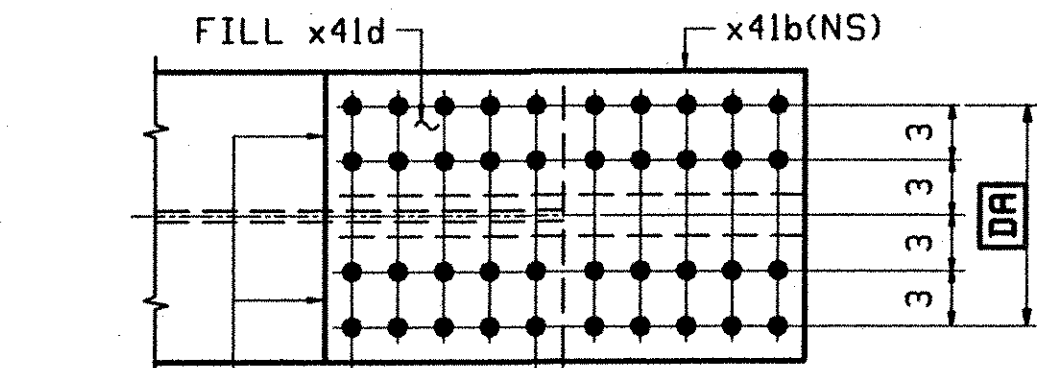
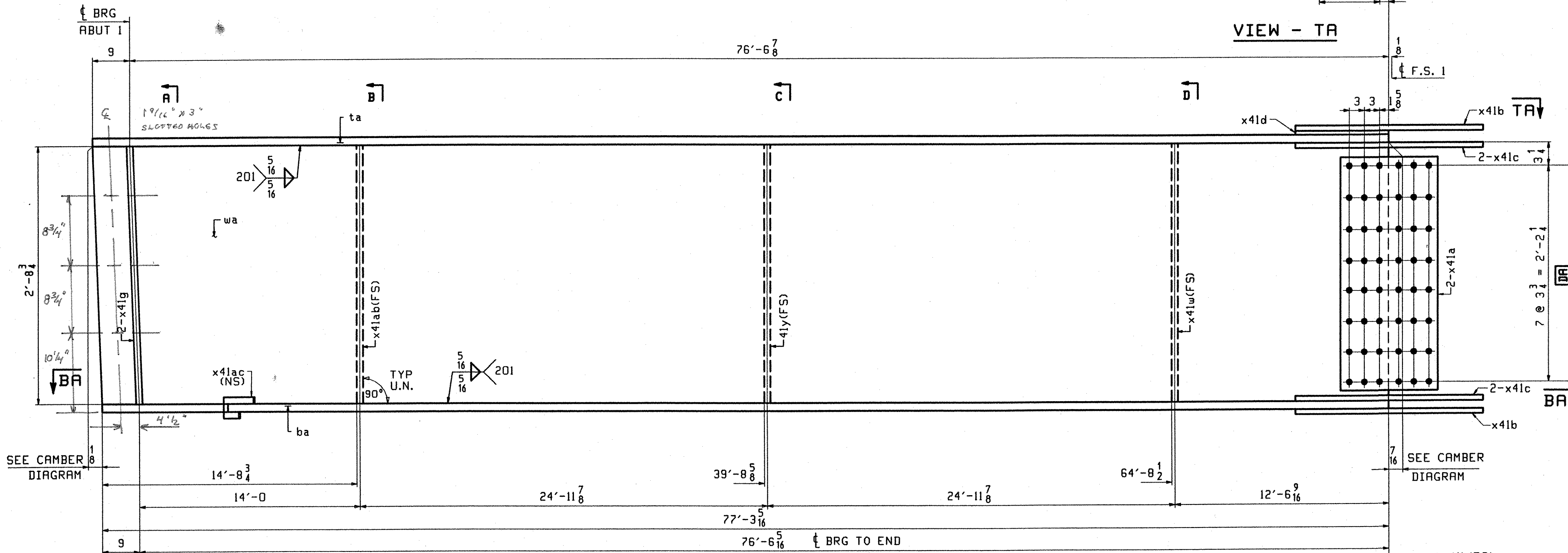
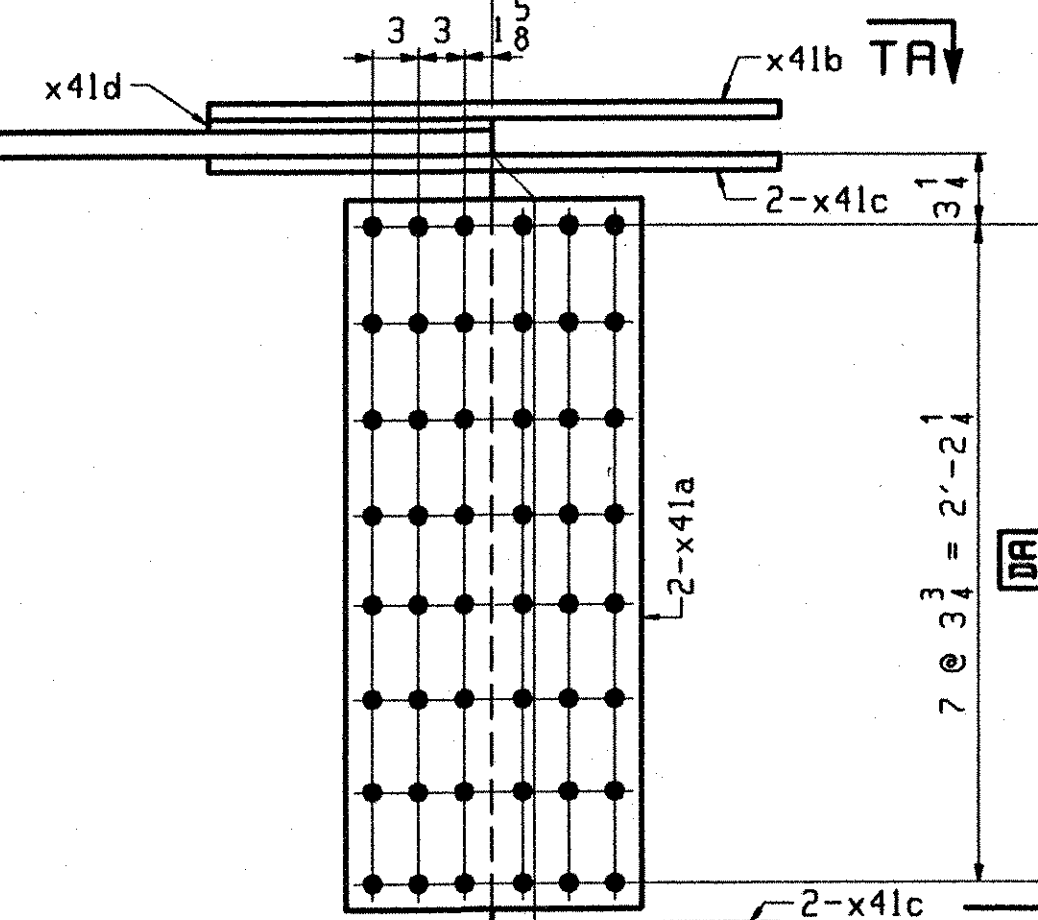


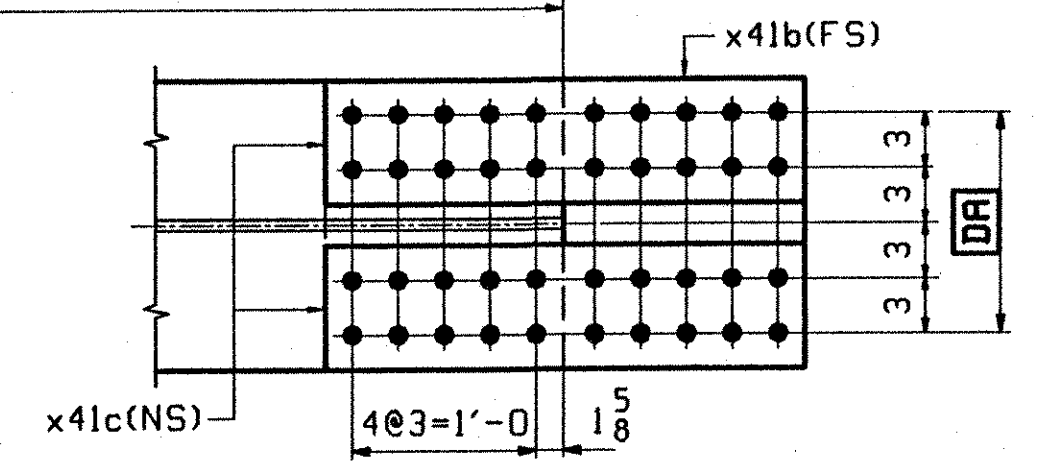
ABM INFO		SHIP				BILL OF MATERIAL		JOB NO.		DRAWING NO.		REV.
PAGE	LINE	MARK	QTY	MARK	MATERIAL	LENGTH	REMARKS	WT	PROCUREMENT	NOTES		
						FT INCHES						
					G5A		GIRDER		16063			
401	L		1	wa	PL 1/2 x 36 1/2	77 3/8	(H270-S0WT2) (H2-3)					
401	G		1	ta	PL 5/8 x 16	77 3/8	(H270-S0WT2) (H2-3)					
401	A		1	ba	PL 5/8 x 16	77 3/8	(H270-S0WT2) (H2-3)					
402	B		2	x41a	PL 1/2 x 29 3/4	1 7/8	(H270-S0WT2) (H2-3)					
402	C		2	x41b	PL 5/8 x 16	2 7/8	(H270-S0WT2) (H2-3)					
402	D		4	x41c	PL 5/8 x 7	2 7/8	(H270-S0WT2) (H2-3)					
402	F		1	x41d	PL 1/2 x 16	1 3/8	FILL					
402	K		2	x41g	PL 7/8 x 7 1/4	2 8/16						
402	M		1	x41w	PL 1/2 x 5	2 8/16						
402	M		1	x41y	PL 1/2 x 5	2 8/16						
402	M		1	x41ab	PL 1/2 x 5	2 8/16						
402	P		1	x41ac	PL 1/2 x 3 5/8	0 10 1/16						



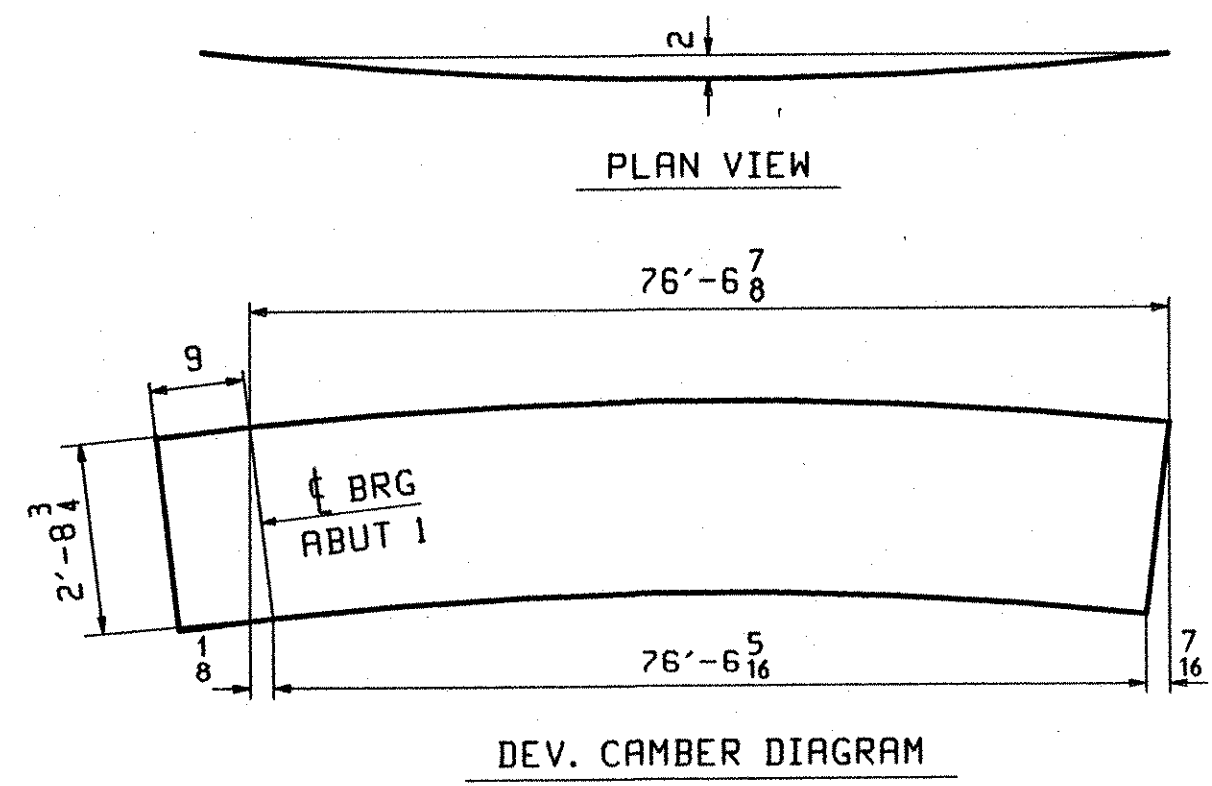
VIEW - TA



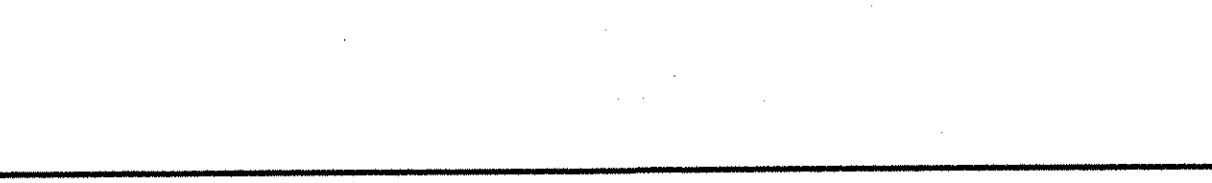
VIEW - TA



SECTION - BA



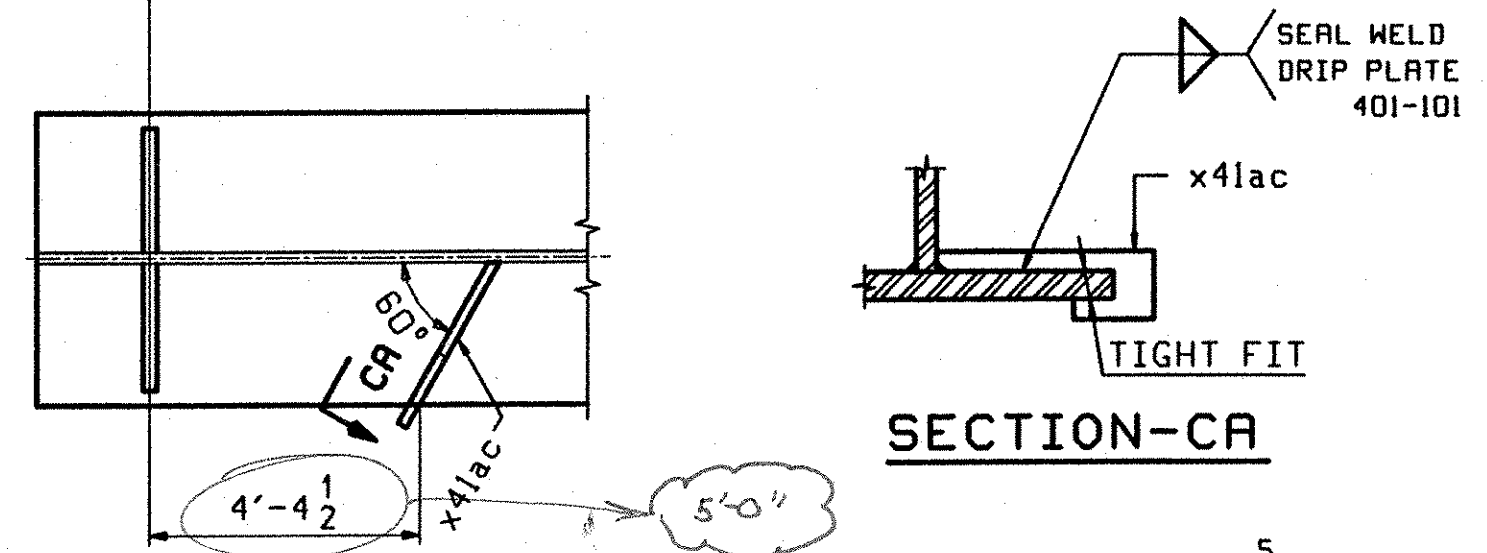
PLAN VIEW



DEV. CAMBER DIAGRAM

ONE - GIRDER - G5A

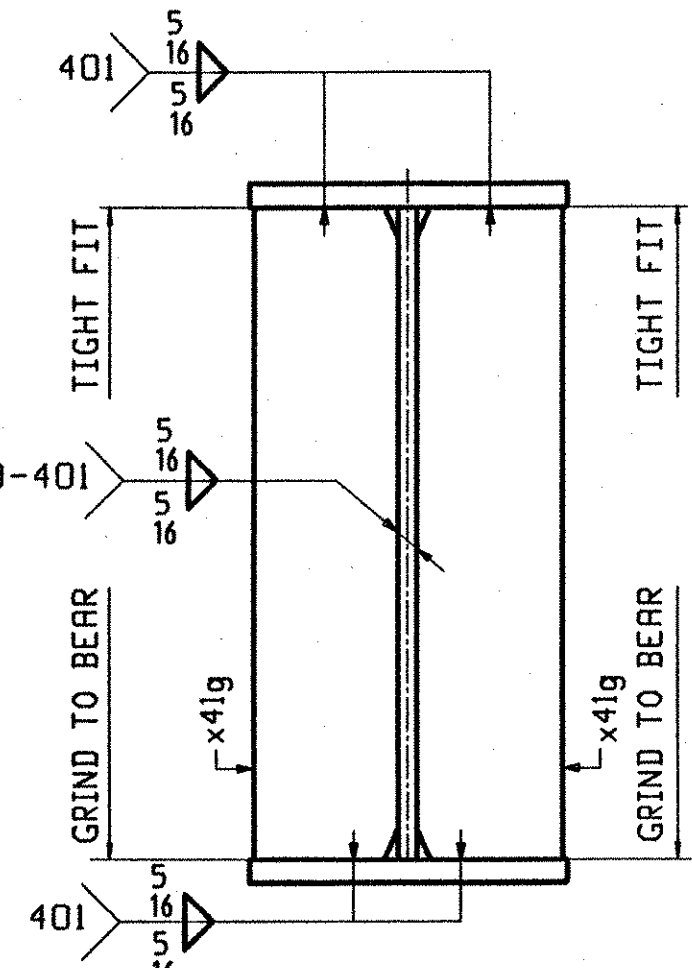
1. FOR GIRDER STANDARD DETAILS SEE DRAWING X41.
2. FOR CAMBER AND FLANGE DIAGRAMS SEE DRAWING C401.
3. FOR HORIZONTAL CURVING DIAGRAM SEE DRAWING HC401.
4. FOR GENERAL NOTES SEE DRAWING GN301.



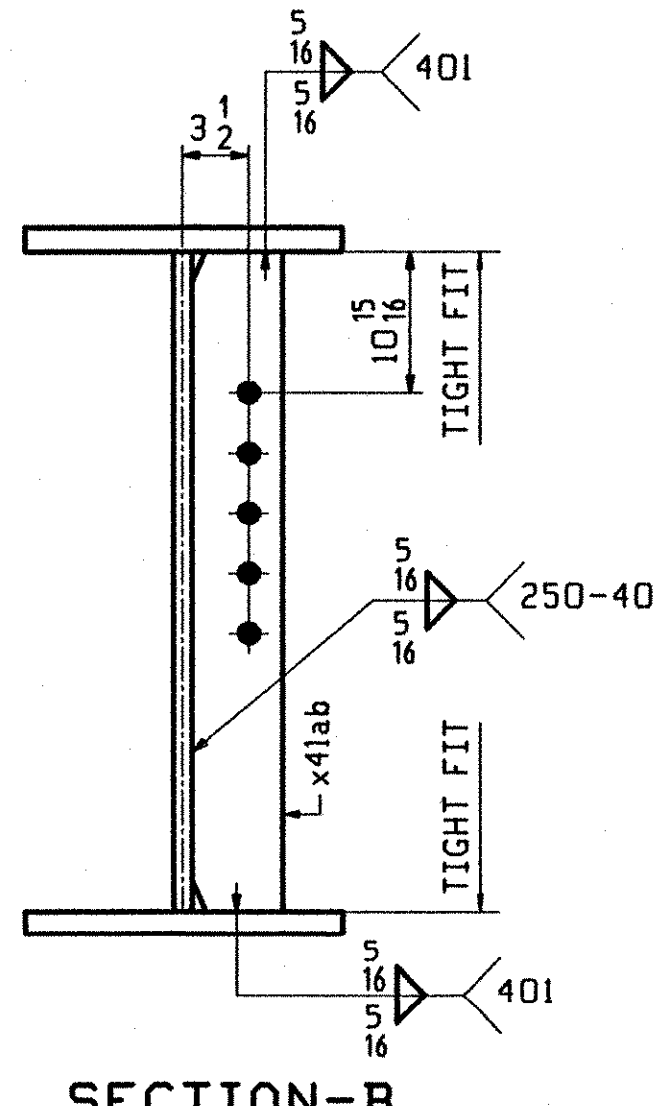
SECTION - CA



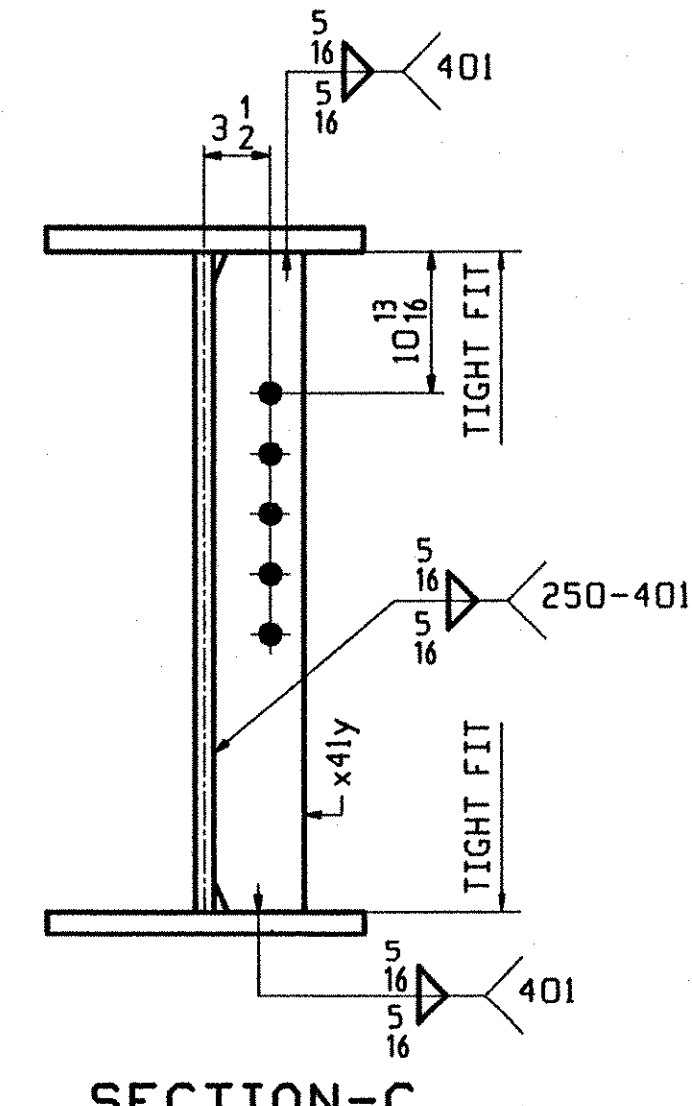
SECTION - BA



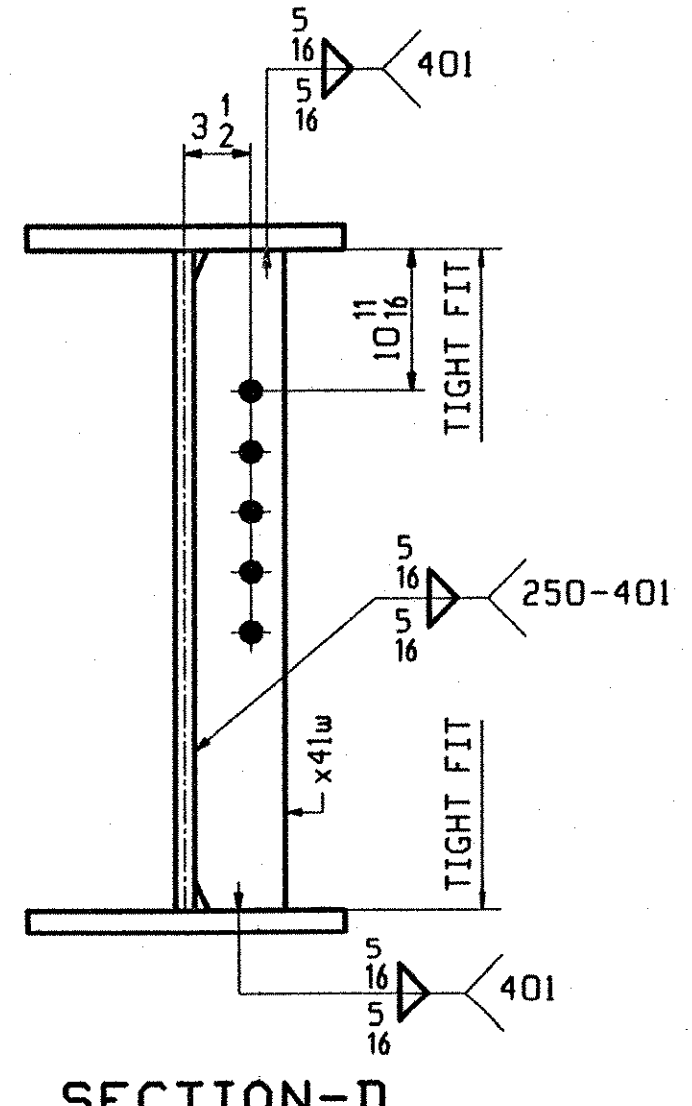
SECTION - A



SECTION - B



SECTION - C



SECTION - D

TVGA  
Engineering, Surveying, P.C.

NO EXCEPTIONS TAKEN  REJECTED  
 FURNISH AS CORRECTED  
 REVISE AND RESUBMIT

ENGINEER HAS REVIEWED SHOP DRAWINGS AND SAMPLES AND OTHER DATA WHICH CONTRACTOR IS REQUIRED TO SUBMIT, ONLY FOR CONFORMANCE WITH THE INFORMATION GIVEN IN THE CONTRACT DOCUMENTS AND COMPATIBILITY WITH THE DESIGN CONCEPT AT THE COMPLETED PROJECT AS A FUNCTIONING WHOLE AS INDICATED IN THE CONTRACT DOCUMENTS. SUCH REVIEW IS NOT INTENDED TO GUARANTEE, WARRANT, TECHNIQUES, SEQUENCE OR PROCEDURES OF CONSTRUCTION OR TO SAFELY PRECAUTIONS AND PROGRAMS INCIDENT HERETO. CONTRACTOR IS RESPONSIBLE FOR DIMENSIONS TO BE CONFIRMED AND COMPLETED AT THE JOB SITE. FOR INFORMATION THAT PERTAINS SOLELY TO THE FABRICATION PROCESSES OR TO TECHNIQUES OF CONSTRUCTION, AND FOR COORDINATION OF THE WORK OF ALL TRADES.

BY: *[Signature]*  
DATE: 01/15/02

OUT FOR APPROVAL	0-03/01											
OUT FOR APPROVAL												
ISSUED TO SHOP												
FIELD & OFFICE												

REV.	REMARKS	DATE	DWN	CHK	APP	Q.A.	NO.	DIA.	LGT	TYPE	WASHER
	MATERIAL: M270 GR. S0W (UN)										
	ELECTRODES:										
	HOLES:										
	SHOP BOLTS:										

SURFACE PREP. & PAINT:  
 - STEEL WITHIN 10'-0" OF ABUT. 2 SHALL BE PAINTED (SEE GN301)  
 - ALL OTHER STEEL SHALL BE BLAST CLEANED AND LEFT UNPAINTED.

DESCRIPTION:	GIRDER - G5A	DRAWN BY	DATE
JOB:	I-89 NB OVER LITTLE RIVER	BW	08/01
	I-89 IMPROVEMENTS	CHKD BY	
	BETWEEN TOWNS OF MIDDLESEX & BOLTON	ELC	9/10/01
	COUNTY OF WASHINGTON VERMONT	APPROV BY	
		SUPERVISOR	M. J. GATTI
PROJ NO.	IM-089-2(26)	Q.A.	
CUSTOMER:	VERMONT AGENCY OF TRANSPORTATION		
<b>CASCO BAY STEEL STRUCTURES, INC.</b>		JOB NO.	DRG. NO.
75 SPRING HILL ROAD SACO, MAINE 04072		119-48N	405
PHONE (207) 282-7360 FAX. (207) 282-1179		REV.	△