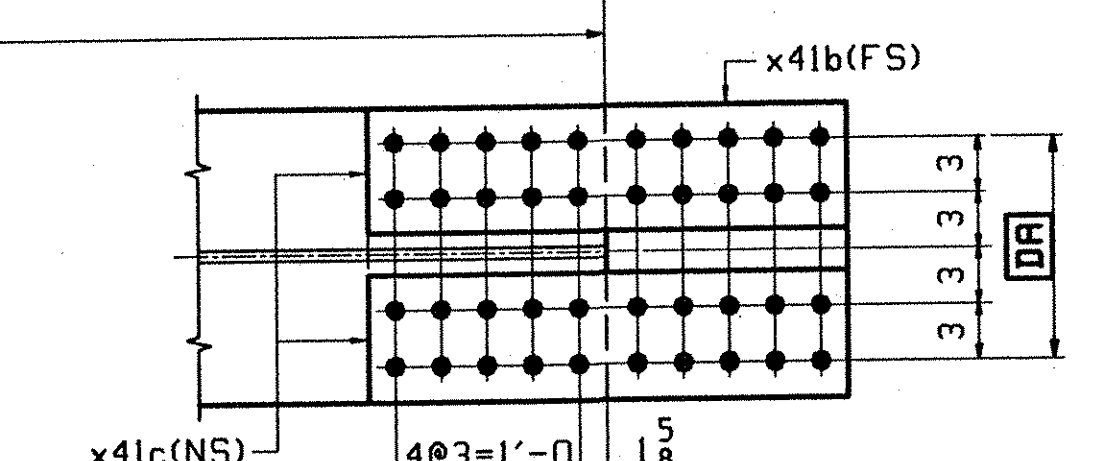
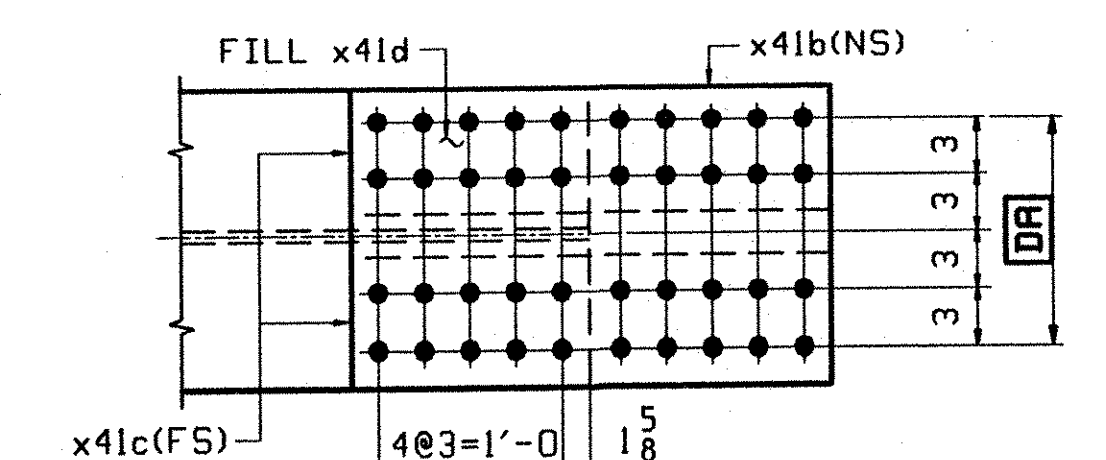
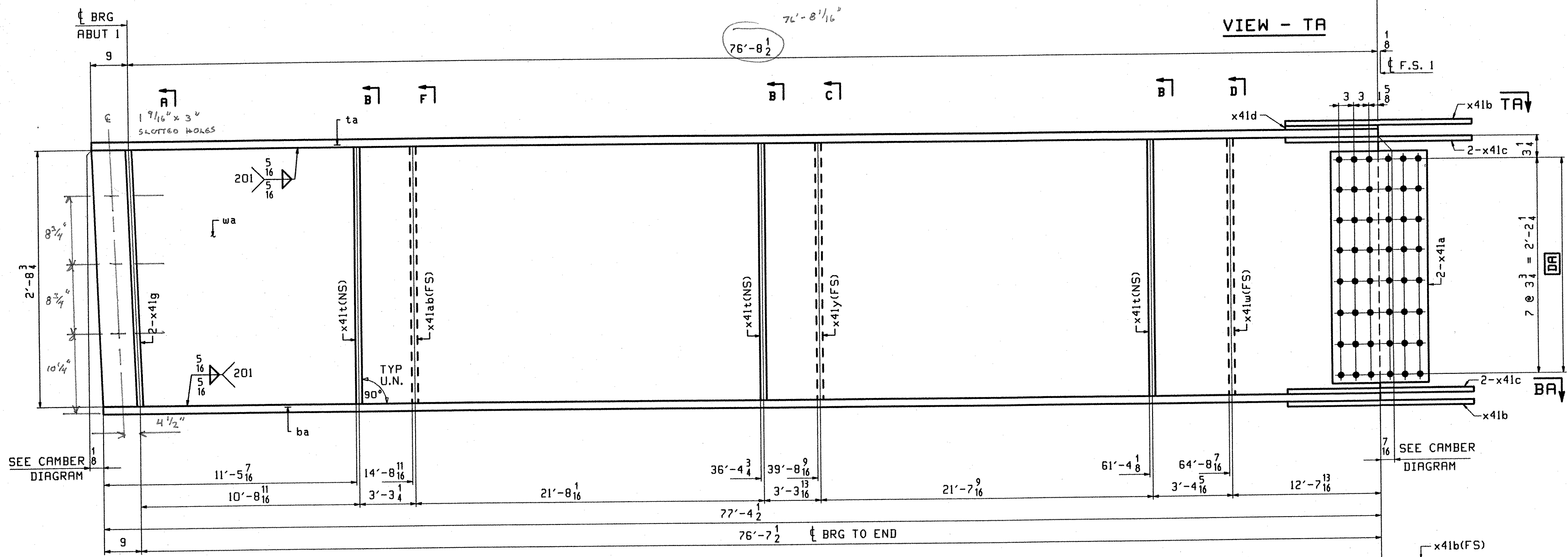
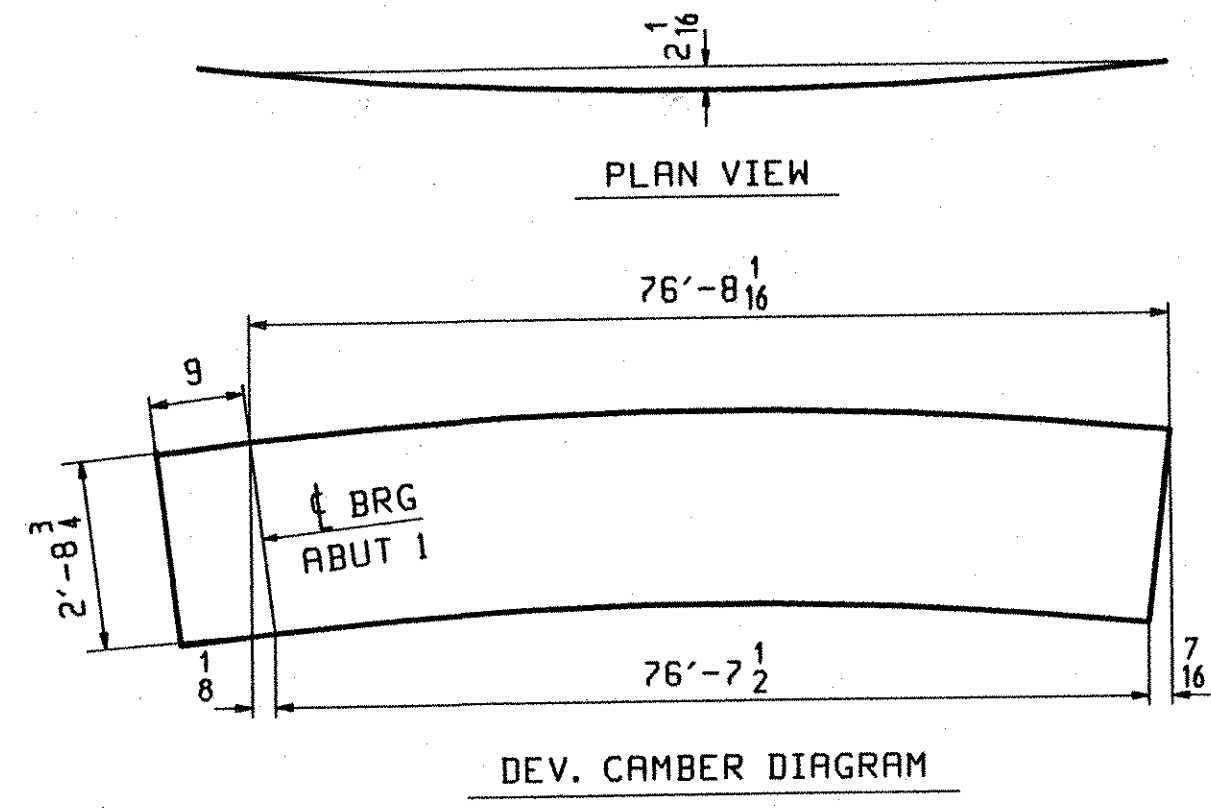
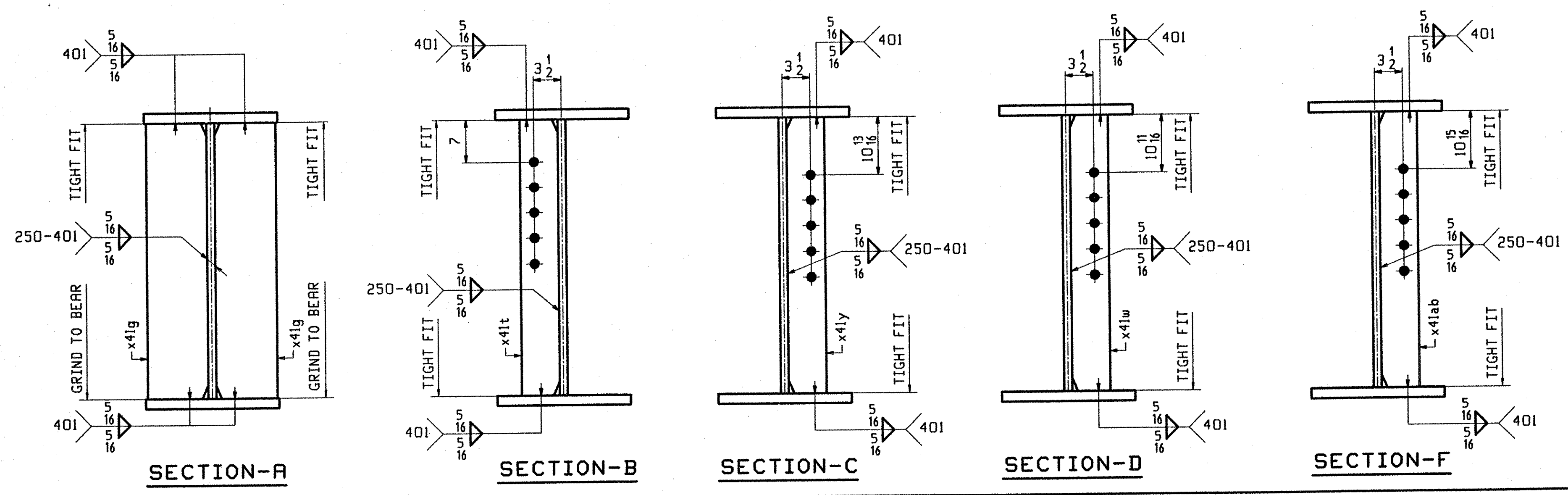


JOB NO.		DRAWING NO.		REV.		
402		402				
ABM INFO	SHIP	BILL OF MATERIAL		REMARKS	MT	PROCUREMENT NOTES
PAGE	LINE	MARK	QTY	MARK	MATERIAL	LENGTH FT INCHES
		G2A	1		GIRDER	
401	L	1	wa		PL 1/2 x 36 1/2	77 5/16 (M270-50WT2) (H2-3)
401	G	1	ta		PL 5/8 x 16	77 5/16 (M270-50WT2) (H2-3)
401	A	1	ba		PL 1/8 x 16	77 4/8 (M270-50WT2) (H2-3)
402	B	2	x41a		PL 1/2 x 29 3/4	1 7/8 (M270-50WT2) (H2-3)
402	C	2	x41b		PL 5/8 x 16	2 7/8 (M270-50WT2) (H2-3)
402	D	4	x41c		PL 3/8 x 7	2 7/8 (M270-50WT2) (H2-3)
402	F	1	x41d		PL 3/4 x 16	1 3/8 FILL
402	K	2	x41g		PL 7/8 x 7 1/2	2 8 3/4
402	M	1	x41ab		PL 1/2 x 5	2 8 3/4
402	M	3	x41t		PL 1/2 x 5	2 8 3/4
402	M	1	x41y		PL 1/2 x 5	2 8 3/4
402	M	1	x41w		PL 1/2 x 5	2 8 3/4



**ONE - GIRDER - G2A**

1. FOR GIRDER STANDARD DETAILS SEE DRAWING X41.
2. FOR CAMBER AND FLANGE DIAGRAMS SEE DRAWING C401.
3. FOR HORIZONTAL CURVING DIAGRAM SEE DRAWING HC401.
4. FOR GENERAL NOTES SEE DRAWING GN301.



**TVGA**  
Engineering, Surveying, P.C.

NO EXCEPTIONS TAKEN  REJECTED  
 FURNISH AS CORRECTED  
 REVISE AND RESUBMIT

ENGINEER has reviewed Shop Drawings and Samples and for conformance with the information given in the Contract Documents and compliance with the design concept of the completed Project as a functioning whole as indicated in the Contract Documents. Such review does not extend to means, methods, techniques, sequences or procedures of construction or to safety precautions and progress incident thereto. Contractor is responsible for dimensions to be confirmed and controlled at the job site, for information that pertains solely to the fabrication process or to techniques of construction; and for coordination of the work of all trades.

BY: ALB  
DATE: 01-11-2000

OUT FOR APPROVAL	10-23-01								
OUT FOR APPROVAL									
ISSUED TO SHOP									
FIELD & OFFICE									

REV.	REMARKS	DATE	DWN	CHK	APP	Q.A.	NO.	DIA.	LGT	TYPE	WASHER
	MATERIAL: M270 GR. 50W (UN)										
	ELECTRODES:										
	HOLES: 15/16 φ (U.N.)										
	SHOP BOLTS: 7/8 φ (U.N.)										

SURFACE PREP. & PAINT:		DRAWN BY		DATE	
- STEEL WITHIN 10'-0" OF ABUT. 2 SHALL BE PAINTED (SEE GN301)		BW		08/01	
- ALL OTHER STEEL SHALL BE BLAST CLEANED AND LEFT UNPAINTED.		CHKD BY		9/10/01	
DESCRIPTION: GIRDER - G2A		APPROV BY		SUPERVISOR	
JOB: I-89 NB OVER LITTLE RIVER		N. J. GATTI		Q.A.	
I-89 IMPROVEMENTS		JOB NO.		DRG. NO.	
BETWEEN TOWNS OF MIDDLESEX & BOLTON		119-48N		402	
COUNTY OF WASHINGTON VERMONT		REV.		△	
PROJECT NO. IM-089-2(26)		CUSTOMER: VERMONT AGENCY OF TRANSPORTATION			
CASCO BAY STEEL STRUCTURES, INC.		75 SPRING HILL ROAD		SACO, MAINE 04072	
PHONE (207) 282-7360		FAX. (207) 282-1179			