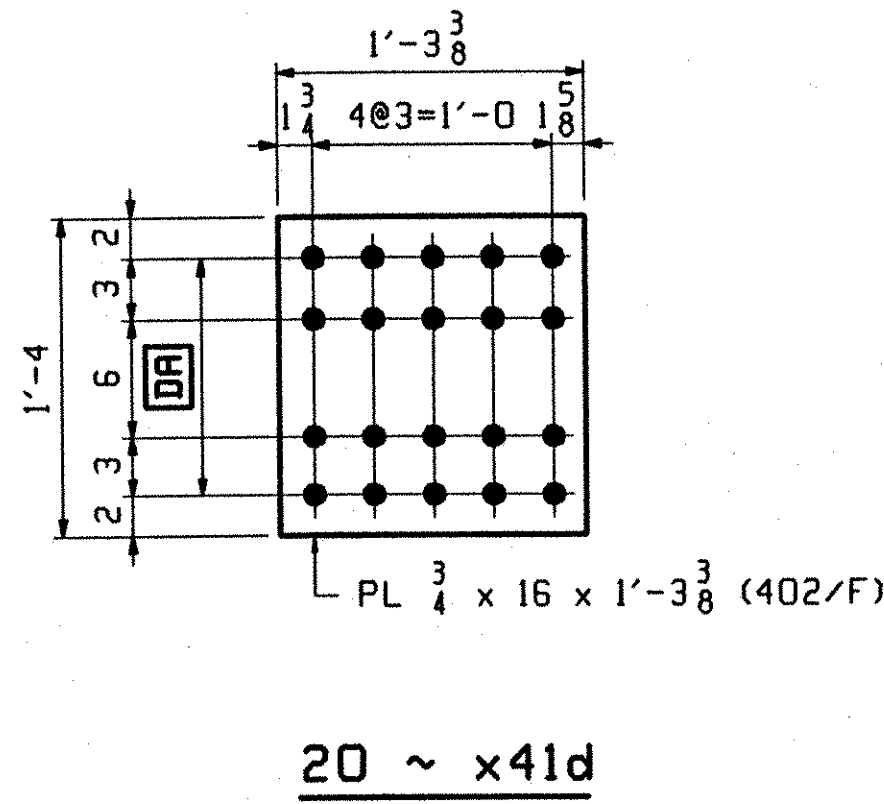
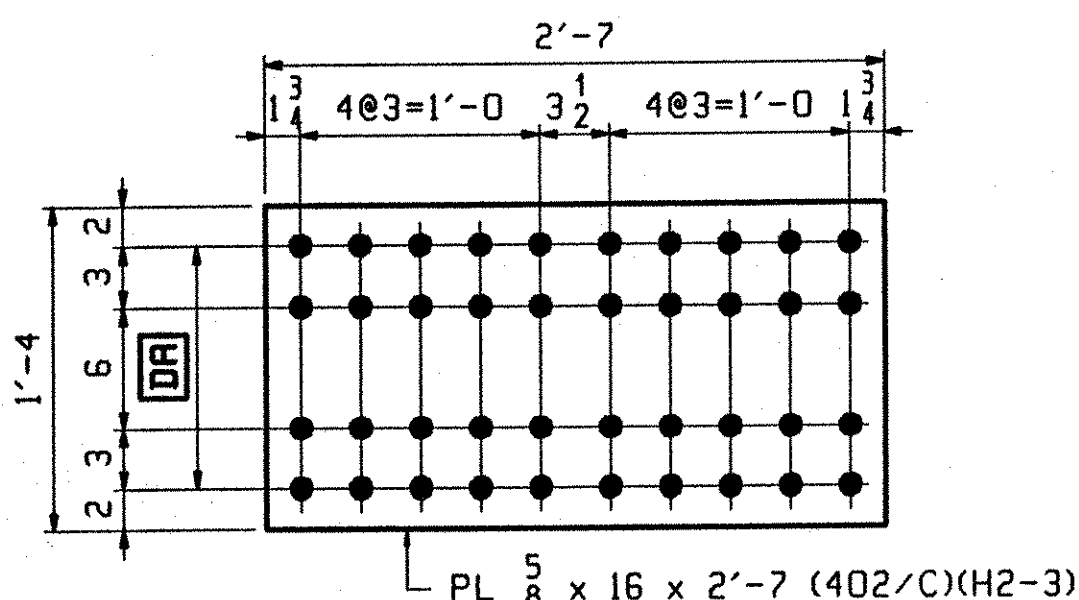


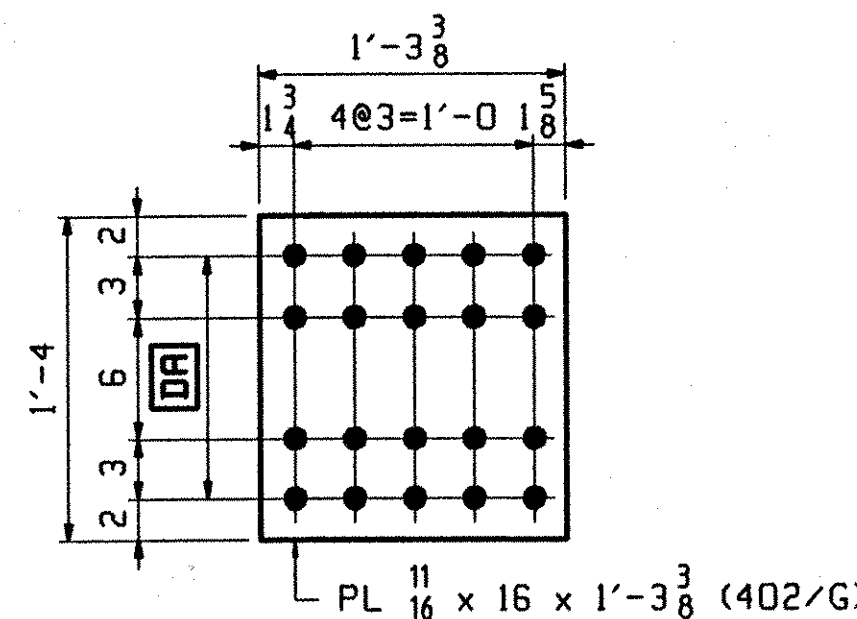
D.O.R.
40 ~ x41a



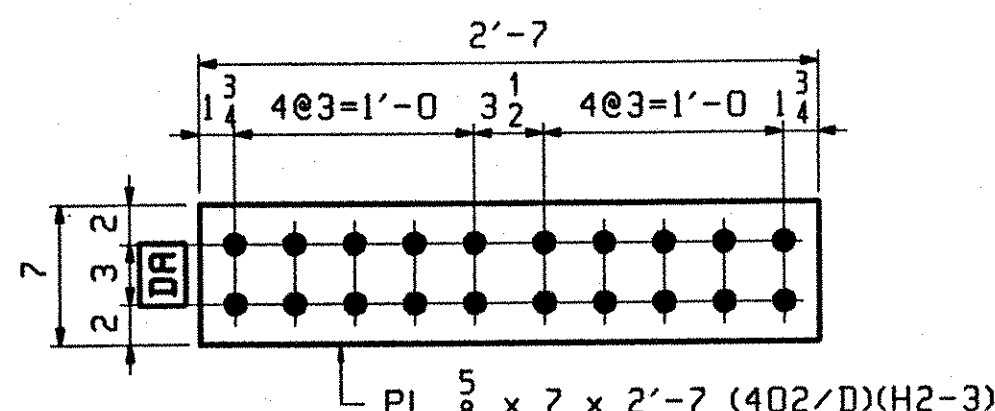
20 ~ x41d



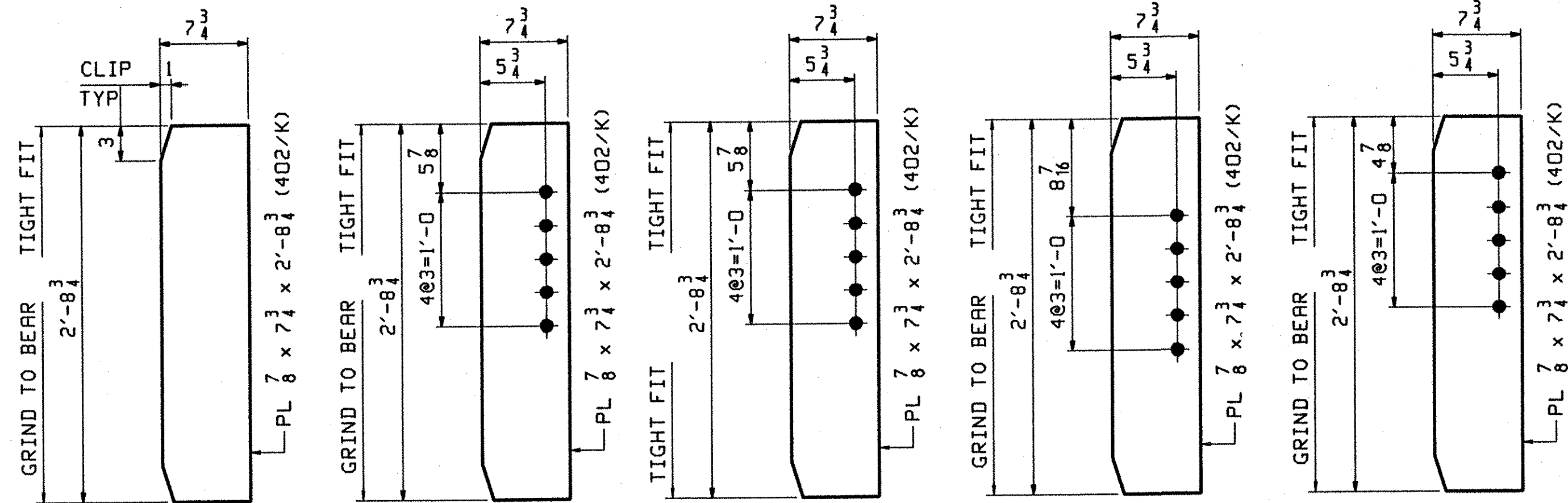
D.O.R.
40 ~ x41b



10 ~ x41f



D.O.R.
80 ~ x41c



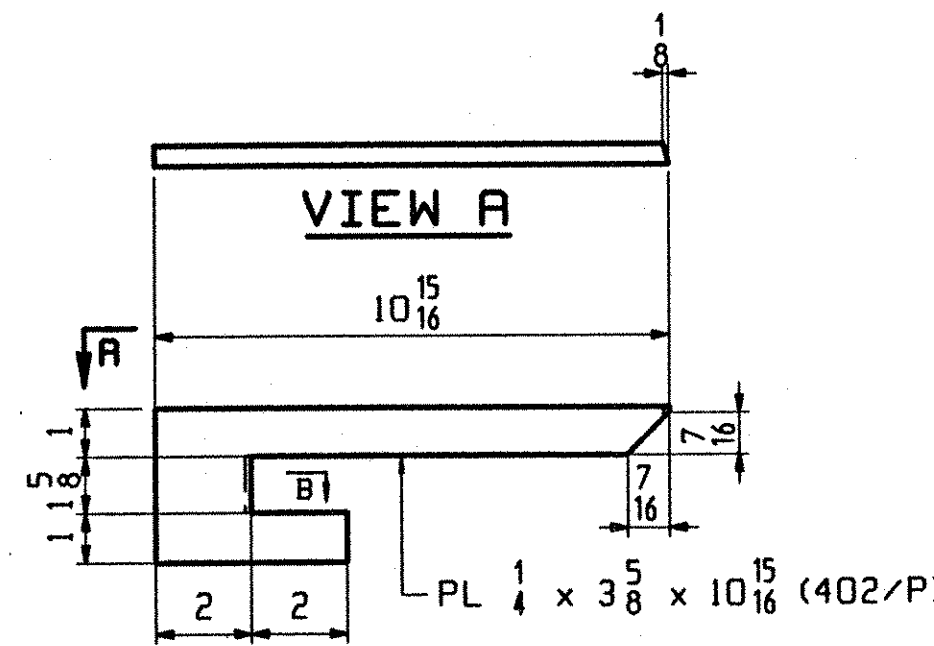
20 ~ x41g
BRG STIFF @ ABUT & PIERS

4 ~ x41k
BRG STIFF @ ABUT

4 ~ x41m
CONN STIFF @ ABUT

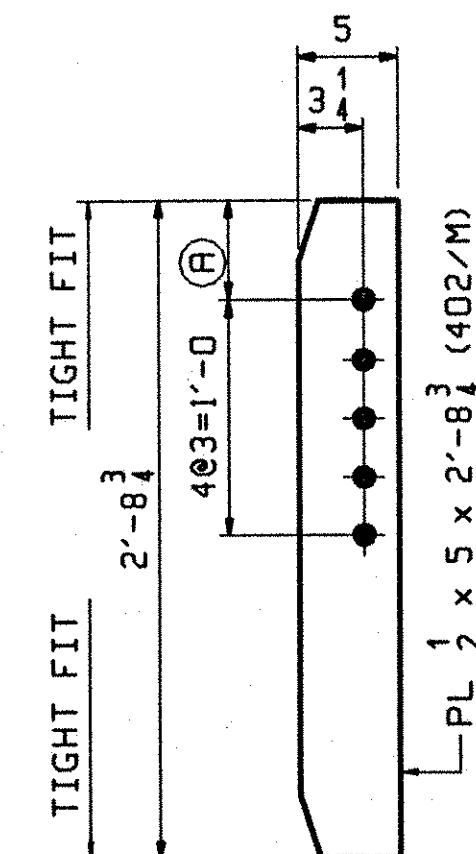
8 ~ x41n
BRG STIFF @ PIERS

8 ~ x41p
BRG STIFF @ PIERS



3 ~ x41ac
DRIP PL

3 ~ x41ad
DRIP PL



INT. CONN STIFF

MARK	REQ'D	(A)
x41t	48	7
x41v	4	10 5/8
x41w	16	10 11/16
x41y	8	10 13/16
x41aa	8	10 7/8
x41ab	12	10 15/16

NOTES:
FOR GENERAL NOTES SEE GN301
H2-3 DENOTES MATERIAL SUBJECT TO CHARPY V-NOTCH TESTING.
D.O.R. DENOTES DIRECTION OF MILL ROLLING

OUT FOR APPROVAL	11-23-01								
OUT FOR APPROVAL									
ISSUED TO SHOP									
FIELD & OFFICE									

REV.	REMARKS	DATE	DWN	CHK	APP	Q.A.	NO.	DIA.	LGT	TYPE	WASHER
MATERIAL:	M270 GR. 50W (UN)	ELECTRODES:									
							15/16 φ (U.N.)				7/8 φ (U.N.)

SURFACE PREP. & PAINT:
- STEEL WITHIN 10'-0" OF ABUT. 2 SHALL BE PAINTED (SEE GN301)
- ALL OTHER STEEL SHALL BE BLAST CLEANED AND LEFT UNPAINTED.

DESCRIPTION:	GIRDER STANDARDS	DRAWN BY	DATE
JOB:	I-89 NB OVER LITTLE RIVER I-89 IMPROVEMENTS BETWEEN TOWNS OF MIDDLESEX & BOLTON COUNTY OF WASHINGTON VERMONT	BW	07/31
PROJ NO.	IM-089-2(26)	CHKD BY	ELC 9/10/01
CUSTOMER:	VERMONT AGENCY OF TRANSPORTATION	APPROV BY	W. J. GATTI
		SUPERVISOR	
		Q.A.	
		JOB NO.	DRG. NO.
		119-48N	X 41
		PHONE (207) 282-7360	FAX (207) 282-1179
		REV.	△

TVGA
Engineering, Surveying, P.C.
 NO EXCEPTIONS TAKEN REJECTED
 FURNISH AS CORRECTED REVISE AND RESUBMIT
ENGINEER has reviewed Shop Drawings and Samples and other data which Contractor is required to submit, fully for conformance with the information given in the Contract Documents and compliance with the design concept of the completed Project as a functioning whole as indicated in the Contract Documents. Such review is not intended to ensure methods, techniques, economics or procedures of construction or to safety procedures and programs incident thereto. Contractor is responsible for dimensions to be obtained and completed at the job site, for information that pertains solely to the fabrication processes or to techniques of construction; and for coordination of the work of all trades.
BY: *[Signature]*
DATE: 01-11-2002