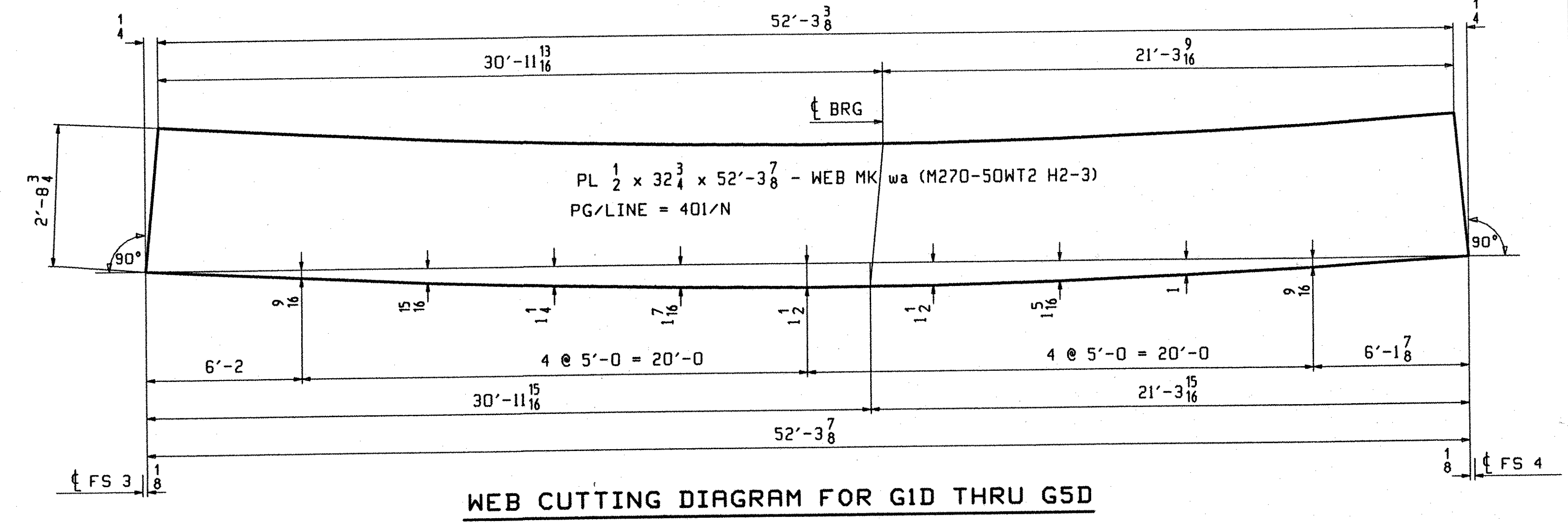
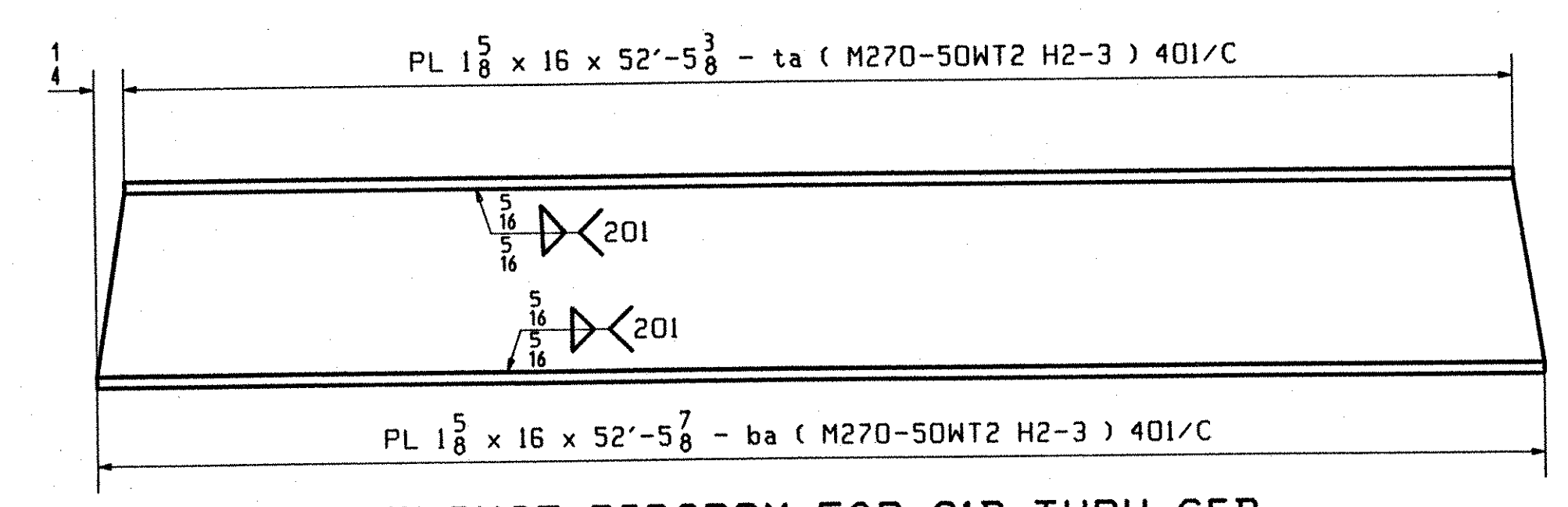


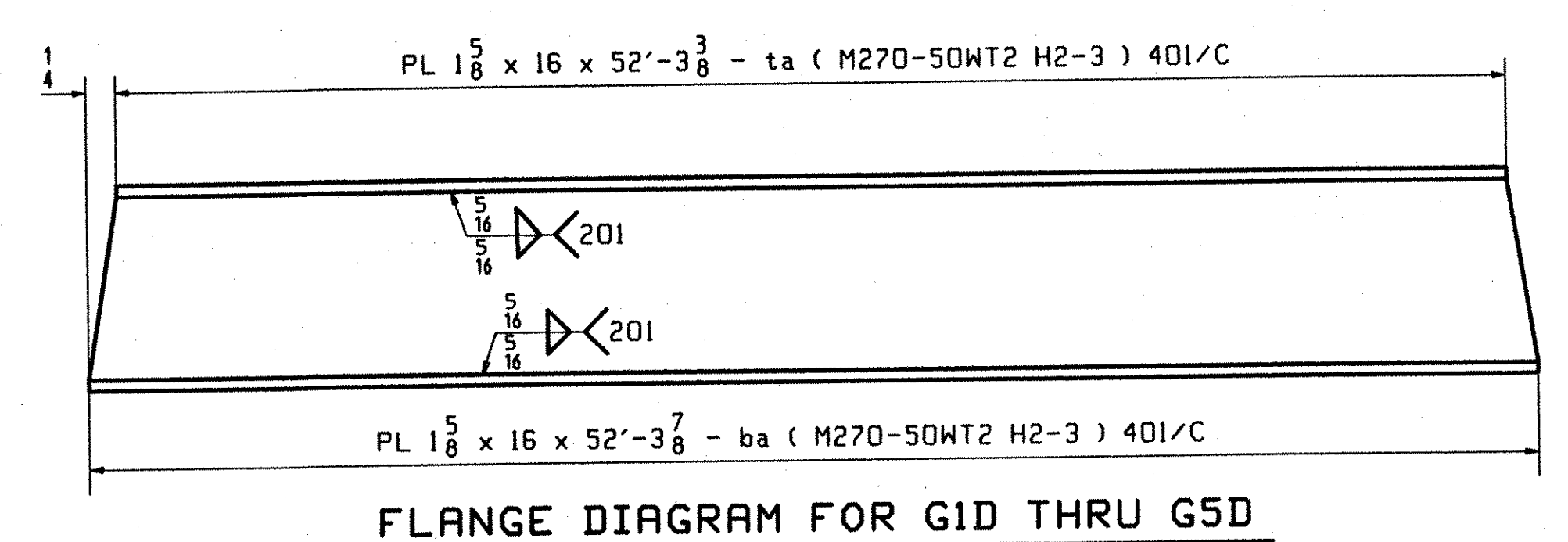
WEB CUTTING DIAGRAM FOR G1B THRU G5B



WEB CUTTING DIAGRAM FOR G1D THRU G5D



FLANGE DIAGRAM FOR G1B THRU G5B



FLANGE DIAGRAM FOR G1D THRU G5D

SEE SHT. GN301 FOR GENERAL NOTES.

OUT FOR APPROVAL	10-03-01								
OUT FOR APPROVAL									
ISSUED TO SHOP									
FIELD & OFFICE									

REV.	REMARKS	DATE	DWN	CHK	APP	Q.A.	NO.	DIA.	LGT	TYPE	WASHER
MATERIAL:	M270 GR. 50W	ELECTRODES:						HOLES:	15/16 Ø (U.N.)	SHOP BOLTS:	7/8 Ø (U.N.)

SURFACE PREP. & PAINT:
 - STEEL WITHIN 10'-0 OF ABUT. 2 SHALL BE PAINTED (SEE GN301)
 - ALL OTHER STEEL SHALL BE BLAST CLEANED AND LEFT UNPAINTED.

DESCRIPTION:	CAMBER & FLANGE DIAGRAMS	DRAWN BY	JAK	DATE	07/30
JOB:	I-89 NB OVER LITTLE RIVER I-89 IMPROVEMENTS BETWEEN TOWNS OF MIDDLESEX & BOLTON COUNTY OF WASHINGTON VERMONT	CHKD BY	WL		8/04
PROJ NO.	IM-089-2(26)	APPROV BY			
CUSTOMER:	VERMONT AGENCY OF TRANSPORTATION	SUPERVISOR	M. J. GATTI		

BY:	<i>[Signature]</i>	JOB NO.	119-48N	DRG. NO.	C402
DATE:	07-18-2002	PHONE	(207) 282-7360	FAX	(207) 282-1179

TVGA
 Engineering, Surveying, P.C.
 NO EXCEPTIONS TAKEN REJECTED
 FURNISH AS CORRECTED
 REVISE AND RESUBMIT
 ENGINEER has reviewed Shop Drawings and Samples and other data which Contractor is required to submit, and in conformance with the information given in the Contract Documents and compliance with the design concept of the completed Project as a functioning whole as included in the Contract Documents. Such reviews do not extend to analysis, methods, techniques, sequences or procedures of construction or to safety precautions and programs related thereto. Contractor is responsible for compliance to be confirmed and corrected at the job site for information that pertains solely to the fabrication processes or to techniques of construction; and for coordination of the work of all trades.