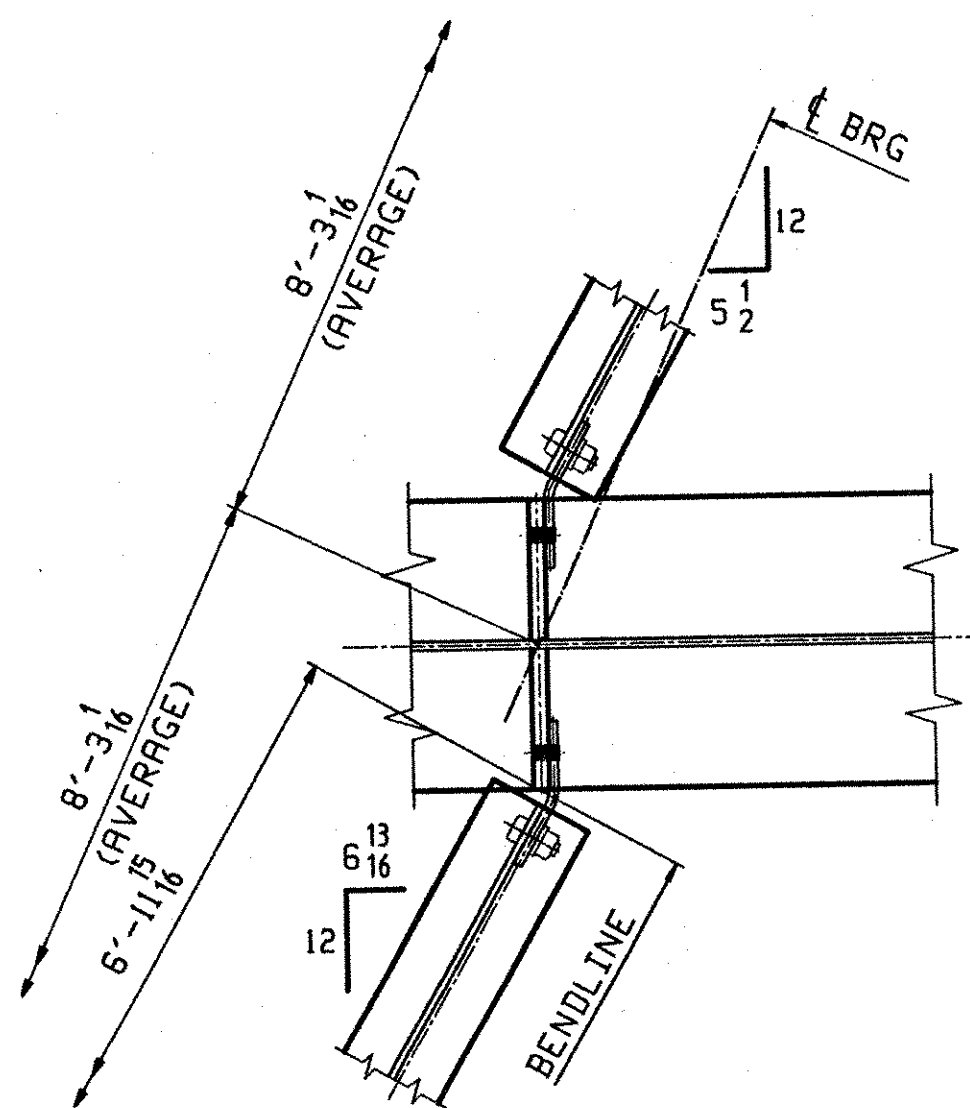


CALCULATION PLAN

Line	DEVELOPED LENGTHS ALONG BTH OF WEB				GRADE	
	LEN A	LEN BL	LEN B	LEN C	ABUT. 1	PIER 1
1	76'-8 1/8	21'-6	52'-6 1/8	37'-1 11/16	.0106	.0054
2	76'-7 5/8	21'-6	52'-6 1/8	37'-1 1/4	.0107	.0055
3	76'-7 1/4	21'-6	52'-6 1/8	37'-0 3/4	.0107	.0055
4	76'-6 13/16	21'-6	52'-6 1/8	37'-0 5/16	.0107	.0055
5	76'-6 7/16	21'-6	52'-6 1/8	36'-11 7/8	.0106	.0054



DIAPHRAGM WORKPOINTS @ PIER 1

**** NOTE ****
 THE PURPOSE OF THIS DRAWING IS TO COORDINATE GEOMETRIC CONTROL INFORMATION. THIS DWG IS SUBMITTED FOR INFORMATION ONLY AND IS NOT INTENDED FOR SHOP FABRICATION.

- NOTES
1. LONGITUDINAL DIMENSIONS ARE SLOPING ALONG BOTT OF WEB WITH CORRECTIONS MADE FOR VERTICAL CURVE, GRADE & DL CAMBER (UN).
 2. TRANSVERSE DIMENSIONS ARE IN A HORIZ. PLANE (UN).
 3. ARROW POINTS TOWARDS LOW END OF MEMBER.
 4. ENDS OF GIRDERS AND BRG. STIFF'S ARE VERTICAL AFTER DL ROTATION.
 5. CF STIFF, INT STIFF & FIELD SPLICES ARE NORMAL TO GRADE.
 6. BOTT PT NUMBERS = TOP PT NUMBERS + 200
 7. FOR LAYOUTS SEE DWG TD401.
 8. COMBINE CROSSFRAMES FOR DIFF IN DROPS OF +/- 3/16
 9. CROSSFRAMES DROPS ARE CALCULATED IN THEIR FINAL POSITION.
 10. WP'S AT BENT PLATE.

TVGA
 Engineering, Surveying, P.C.

NO EXCEPTIONS TAKEN REJECTED
 FURNISH AS CORRECTED
 REVISE AND RESUBMIT

ENGINEER HAS REVIEWED SHOP DRAWINGS AND SAMPLES AND OTHER DATA WHICH CONTRACTOR IS REQUIRED TO SUBMIT, ONLY FOR CONFORMANCE WITH THE INFORMATION GIVEN IN THE CONTRACT DOCUMENTS AND COMPATIBILITY WITH THE DESIGN CONCEPTS OF THE CONTRACT DOCUMENTS. SUCH REVIEWS DO NOT EXTEND TO METHODS, MATERIALS, TECHNIQUES, SEQUENCES OR PROCEDURES OF CONSTRUCTION OR TO SAFETY PRECAUTIONS AND PROGRAMS INCIDENT THERETO. CONTRACTOR IS RESPONSIBLE FOR DIMENSIONS TO BE CONFIRMED AND COMPLETED AT THE JOB SITE. FOR INFORMATION AND PERTAINING ONLY TO THE FABRICATION PROCESS OR TO TECHNIQUES OF CONSTRUCTION, AND FOR COORDINATION OF THE WORK OF ALL TRADES.

BY: DDP
 DATE: 01-2-2002

OUT FOR APPROVAL	0-3-01										
ISSUED TO SHOP											
FIELD & OFFICE											
REV.	REMARKS	DATE	DWN	CHK	APP	Q.A.	NO.	DIA.	LGT	TYPE	WASHER
MATERIAL:	M270 GR. 50W	ELECTRODES:					HOLES:	15/16 Ø (U.N.)	SHOP BOLTS:	7/8 Ø (U.N.)	
SURFACE PREP. & PAINT: - STEEL WITHIN 10'-0 OF ABUT. 2 SHALL BE PRINTED (SEE GN301) - ALL OTHER STEEL SHALL BE BLAST CLEANED AND LEFT UNPAINTED.											
DESCRIPTION: CALCULATION PLAN										DRAWN BY	DATE
JOB: I-89 NB OVER LITTLE RIVER										JAK	07/27
I-89 IMPROVEMENTS										CHKD BY	
BETWEEN TOWNS OF MIDDLESEX & BOLTON										WL	8/04
COUNTY OF WASHINGTON VERMONT										APPROV BY	
PROJ. NO. IM-089-2(26)										SUPERVISOR	M. J. GATTI
CUSTOMER: VERMONT AGENCY OF TRANSPORTATION										Q.A.	
CASCO BAY STEEL STRUCTURES, INC.										JOB NO.	DRG. NO.
75 SPRING HILL ROAD SACO, MAINE 04072										119-48N	WS401
PHONE (207) 282-7360 FAX. (207) 282-1179										REV.	△